



# BZB Industries 270/Mini Freestanding Awning User Manual





# Contents

Disclaimers.....	1
Installation.....	2
Awning Setup 270 270 Mini.....	4
Awning Pack Up.....	6
Looking after your Awning.....	9

## Disclaimers

The manufacturer's warranty will be VOID if ANY holes are drilled into the awning.

Installation of the awning requires 2+ people without mechanical assistance

Improper installation of the product can result in damage to the vehicle, product or the users.

# Installation

These steps are a generic instruction for installing your 270 or 270 Mini freestanding awnings, using the supplied awning brackets.



1. Open awning box and remove packaging



2. Remove the awning brackets from the box



## **270 Mini**

3. Remove the Hardware Bag from the box



## **Standard 270**

4. Remove the hardware bag, located in the frame of the awning



5. Bolt the supplied awning bracket to your roof rack / roof cage



6. Slide the supplied stainless bolts into the awning track



7. Lift the awning up to the car, lining up the bolts to the awning brackets



8. Tighten the provided lock nuts, until firm

Note: Check these nuts after the first few drives

# Awning Setup 270 270 Mini

Follow this awning setup guide the first time you set up your awning, it includes any tips and tricks that we've found on our journeys.



1. Unzip the awning bag



2. Undo the velcro straps



3. Fold the top of the bag over the back of the awning frame

Note: If you don't do this, the awning will not open fully and you could break the zipper at the hinge end



4. Hook on the supplied tensioner rope to the eyelet on the closest awning corner

---



5. Pulling the rope, walk the awning around the car



6. Hook the other end of the tensioner rope onto your roof rack, tent etc



7. Pull the tensioner until the awning is taught



8. **OPTIONAL:** Fold down the awning leg

Note: The extra legs supplied with the awning are not necessary however can be used on each other awning beam for extra support



9. **OPTIONAL:** Plug in the supplied lighting connector to a 12v source

# Awning Pack Up

Follow this Awning pack up guide the first time you pack up your awning, it includes any tips and tricks that we've found on our journeys.



1. Fold up the awning legs if they are down



2. Disconnect the lighting connector if connected



3. Loosen the awning tensioner



4. Unhook the tensioner from the ROOF side
-



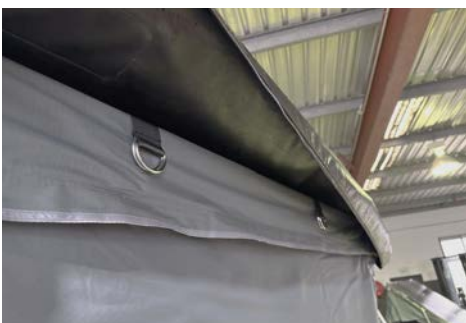
5. Walk the awning back around the car, make sure the canvas folds down nicely



6. Push the frame flush with the backboard of the awning bag



7. Bring the awning bag back over the awning frame and hinge



8. Reach behind the awning frame and feel for the velcro loop



9. Grab the bottom of the awning canvas and fold it to the top middle to make a smaller triangle





10. Grab the bottom, of this smaller triangle and roll the canvas up to the frame



11. Whilst holding the rolled up canvas, bring the velcro strap through the loop and tightly stick it back to itself



12. Repeat for the other 2 velcro straps



13. Hook the tensioner rope onto the middle velcro loop and loosely tighten it



14. Zip the bag up, leaving the zippers at the back of the awning



# Looking after your Awning

Looking after your tent properly will ensure it lasts the test of time. There are multiple things you can do to prolong the life of the tent:

## **Air out the Awning**

After a trip, it's recommended to open out the awning on a nice clear day and air it out. This is especially important if you have been camping / driving in rainy conditions. This also lessens the risk of mould from growing on the canvas.

## **Clean the Awning with Water**

It is advised to only clean off the awning with water as different chemicals can affect the canvas material, potentially causing discolouration. So a simple hose off or scrub with a sponge if there is caked on mud is all that should be needed. Washing off the awning often will ensure no rust or corrosion can start to form.

**This is especially important after it's been on the beach.**