



# BZB Industries 270XL Freestanding Awning User Manual





# Contents

Disclaimers.....	1
Installation.....	2
Awning Setup 270XL.....	4
Awning Pack Up.....	7
Looking after your Awning.....	10

## Disclaimers

The manufacturer's warranty will be VOID if ANY holes are drilled into the awning.

Installation of the awning requires 2+ people without mechanical assistance

Improper installation of the product can result in damage to the vehicle, product or the users.

# Installation

These steps are a generic instruction for installing your 270XL freestanding awning, using the supplied awning brackets.



1. Open awning box and remove packaging



2. Remove the awning brackets from the box



3. Remove the Hardware Bag from the box



4. Bolt the supplied awning bracket to your roof rack / roof cage



5. Slide the supplied stainless bolts into the awning track



6. Lift the awning up to the car, lining up the bolts to the awning brackets



7. Tighten the provided lock nuts, until firm

Note: Check these nuts after the first few drives

# Awning Setup 270XL

Follow this awning setup guide the first time you set up your awning, it includes any tips and tricks that we've found on our journeys.



1. Unzip the awning bag



2. Undo the velcro straps



3. Fold the top of the bag over the back of the awning frame

Note: If you don't do this, the awning will not open fully and you could break the zipper at the hinge end



4. Hook on the supplied tensioner rope to the eyelet on the closest awning corner

---



5. Pulling the rope, walk the awning around the car



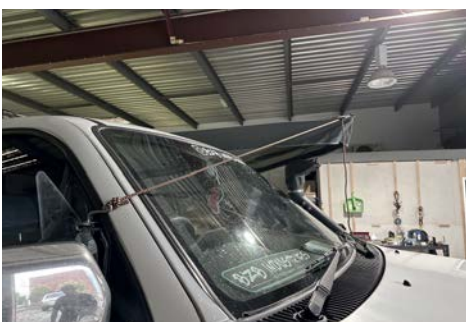
6. Hook the other end of the tensioner rope onto your roof rack, tent etc. Leave loose



7. Pull out the front side of the awning out towards the bonnet of the car

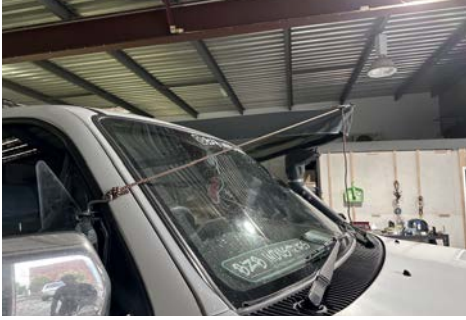


8. Hook the tensioner rope onto the eyelet



9. Hook the other end of the tensioner onto the front of your tent or drivers window

Note: This rope should be as horizontal to the ground as possible. If the rope is pulling too far down it causes stress on the hinge. So, a Bull Bar is not recommended.



10. Tension both the front and rear tensioner



11. **OPTIONAL:** Fold down the awning leg

Note: The extra legs supplied with the awning are not necessary however can be used on each other awning beam for extra support



12. **OPTIONAL:** Plug in the supplied lighting connector to a 12v source

# Awning Pack Up

Follow this Awning pack up guide the first time you pack up your awning, it includes any tips and tricks that we've found on our journeys.



1. Fold up the awning legs if they are down



2. Disconnect the lighting connector if connected



3. Loosen both the awning tensioners



4. Unhook both tensioners from the ROOF side





5. Bring the FRONT section of the awning in towards the frame



6. Fold the front section in, underneath the canvas of the rear section



7. Tuck the front section right up to the frame



8. Fold in the rear section of the awning as shown



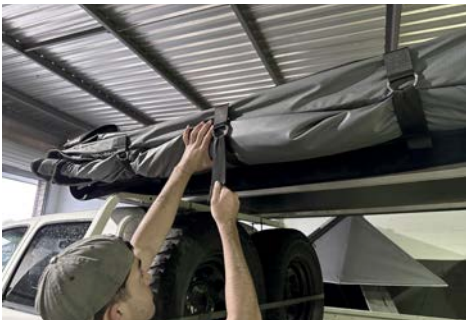
9. Grab the front section of canvas and roll it up on an angle as shown



10. Do up the frontmost velcro strap and tighten it to hold the rolled up canvas



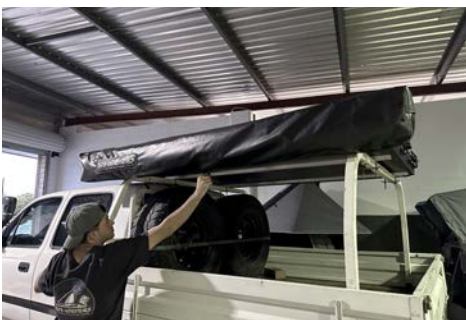
11. Roll up the remaining canvas



12. Do up the other two velcro straps



13. Bring the awning bag back over the canvas



14. Zip the bag up



# Looking after your Awning

Looking after your tent properly will ensure it lasts the test of time. There are multiple things you can do to prolong the life of the tent:

## **Air out the Awning**

After a trip, it's recommended to open out the awning on a nice clear day and air it out. This is especially important if you have been camping / driving in rainy conditions. This also lessens the risk of mould from growing on the canvas.

## **Clean the Awning with Water**

It is advised to only clean off the awning with water as different chemicals can affect the canvas material, potentially causing discolouration. So a simple hose off or scrub with a sponge if there is caked on mud is all that should be needed. Washing off the awning often will ensure no rust or corrosion can start to form.

**This is especially important after it's been on the beach.**