

Installation Instructions
 for
 Engine/Transmission Skid Plate
 for
 2012-2018 Jeep® JK Wrangler

Thank you for purchasing your new Skid Row Offroad engine/transmission skid plate. It is designed to give you peace of mind while traversing even the toughest trails.



Your skid plate package should come complete with the following parts:

- | | |
|--|---|
| 1. (1) Engine/Transmission Skid Plate | 7. (5) 3/8-16 UNC x 1" Hex Head Bolts |
| 2. (1) Passenger Side Mounting Bracket | 8. (2) 3/8-16 UNC x 1.5" Hex Head Bolts |
| 3. (1) Driver's Side Mounting Bracket | 9. (9) 3/8-16 UNC Hex Nuts |
| 4. (1) Passenger Side Strut Rod | 10. (9) 3/8" Lock Washers |
| 5. (1) Driver's Side Strut Rod | 11. (7) 3/8" Flat Washers |
| 6. (2) 3/8-16 UNC x 3.0" Carriage Head Bolts | 12. (2) 3/8" Large Flat Washers |

WARNING: Be sure to place jack stands under the vehicle before working underneath it!

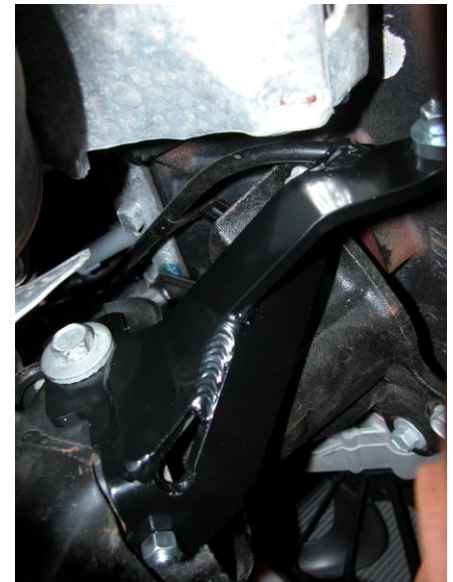
Step 1: Automatic transmission models require the removal of the factory transmission skid plate/cross-member shown to the right. This cross-member interferes with the driveshaft once you lift your Jeep and disconnect the front sway bar, so you don't want it anyhow.



Step 2: Place two 3/8-16x1” bolts with “small” flat washers through the holes in the bottom of the passenger side motor mount as shown in the photo at right. Install them from the top as shown otherwise the one to the right in this picture will contact the motor mount and cause a vibration. It’s a little tricky to slide in, but they will both fit.



Step 3: Install the passenger side-mounting bracket using the bolts just inserted into the motor mount. The mounting tab faces the rear of the vehicle. It is shown with the strut rod attached in the photo to the left. Leave these bolts loose for now.



Step 4: The driver’s side mounting bracket (shown above left by itself) is to be installed as shown in the photo above right. To do this, loosen the motor mount bolt. Turn the nut all the way to the end of the bolt, but do NOT remove it. Take a hammer and tap the bolt toward the rear of the vehicle. This allows the mounting bracket to be slipped under the head of the bolt. Then, using a 3/8-16x 1” bolt and a “small” flat washer, install the bracket. The bolt should be slipped into the bottom of the motor mount from above and the nut used on the bottom. Tighten the motor mount bolt to factory torque and then tighten the 3/8-16 bolt as well.

Step 5: Remove the two bolts that hold the factory transfer case skid plate to the transmission cross-member. These require an 18mm socket or wrench.

Step 6: Loosen the two remaining bolts (also 18mm) that hold the transfer case skid plate to the chassis and gas tank skid plate. This allows the engine/transmission skid plate to be slipped between the transfer case skid plate and the transmission cross-member.



Step 7: Using a floor jack (or a friend) position the skid plate as shown above.

Step 8: Using the two factory transfer case skid plate bolts removed in Step 5, loosely bolt the engine/transmission skid plate to the transmission cross-member.

Step 9: Install the passenger side strut rod using one of the 3/8-16 x 1.5” bolts at the top of the strut rod and one 3/8-16 x 1” bolts at the bottom.







Step 10: Install the driver's side strut rod as shown at left, again using one of the 3/8-16 x 1.5” bolts at the top of the strut rod and one 3/8-16 x 1” bolts at the bottom. Make sure to place the strut rod within the skid plate as shown. Also, please note that the strut rod isn't quite symmetrical. It will fit better one way than it does the other, but there is no distinguishing feature for top or bottom.

Step 11: Using the two carriage bolts provided, loosely bolt the engine/transmission skid plate to the passenger side of the transmission cross-member. **Note:** Manual transmission models will only use one carriage bolt. Make sure to use the “large” flat washers on top of the cross-member.

Step 12 : Tighten all hardware once everything is fit together.

We hope you enjoy your new Skid Row Offroad engine/transmission skid plate!

Sincerely,
Your friends at Skid Row Offroad

<p>Skid Row Offroad 100 Creek Road, Carlisle, PA 17013 Phone 717-701-8315</p> <p>www.SkidRowOffroad.com</p>	<p>   </p> <p>Skid Row Offroad</p>
--	--