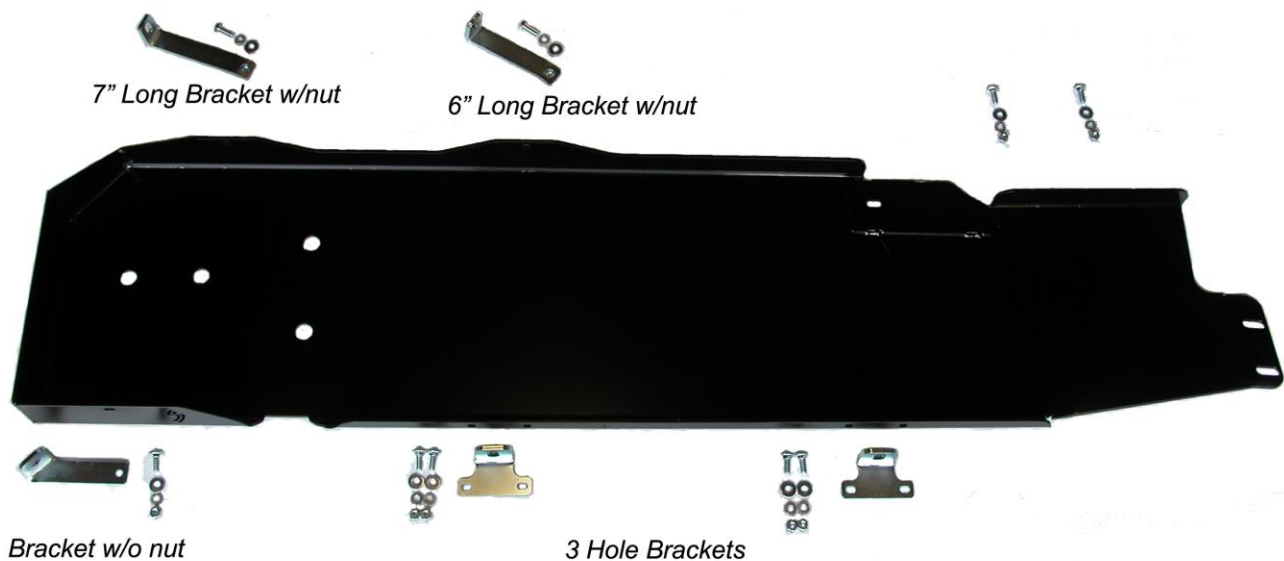


Installation Instructions
for
Gas Tank Skid Plate, JP-5014
for
2007-2018 Jeep® JK Wrangler 4 Door

Thank you for purchasing your new Skid Row Offroad gas tank skid plate. It is designed to give you peace of mind while traversing even the toughest trails.

Your skid plate package should come complete with the following parts:

1. (1) Gas tank Skid Plate
2. (2) Mounting Brackets with 3 Holes
3. (1) Mounting Bracket w/o Nut
4. (1) 7" Mounting Bracket with Nut
5. (1) 6" Mounting Bracket with Nut
6. (2) 3/8-16 x 1" Hex Head Bolts
7. (7) 3/8-16 x 1" Carriage Head Bolts
8. (7) 3/8-16 Hex Nuts
9. (9) 3/8 Flat Washers
10. (9) 3/8 Lock Washers



Step 1: Remove the two bolts at the front of the factory gas tank skid plate that are shown in the photo at right.

Step 2: Remove the bolt that holds the transfer case skid plate to the factory gas tank skid plate. Do NOT remove any other mounting bolts!





Step 3: Place five of the carriage bolts through the holes on the side of the skid plate with the Skid Row logo cut out as shown in the photo at left. Their threads should face outward. Put a nut on each one to keep it in place while positioning the skid plate.

Step 4: Using a floor jack, lift the gas tank skid plate into place and re-install the two front bolts removed in Step 1. Be careful not to cross-thread them! Leave them loose at this time in order to shift the skid plate if needed.

NOTE: Leave all the bolts loose while installing the skid plate. This makes installation easier, especially when one is a tight fit. The bolts are to be tightened only after all of them have been installed. Tightening is the last step.

Step 5: To install the two Mounting Brackets with 3 Holes, first remove the factory skid plate mounting bolts from the chassis. Then remove the nuts that were installed on the two carriage bolts for each bracket. Place the bracket over the carriage bolts and install the flat washers, lock washers, and nuts. Then re-install the factory mounting bolt through the bracket as shown in the photos.



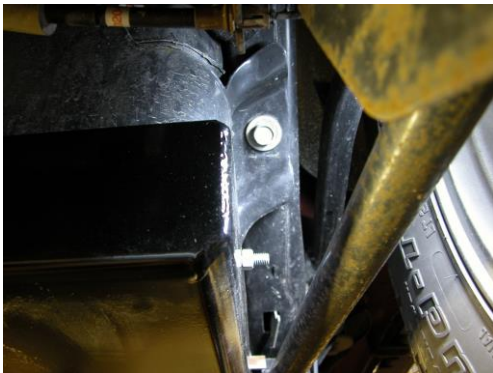
Step 6: The 6" Mounting Bracket with Nut is installed in the middle, inboard side of the skid plate, near the accordion seal on the driveshaft. Remove the factory mounting bolt that is shown in the photo below. Place the bracket in position and install one of the 3/8-16 x 1" Hex Head Bolts, a flat washer, and a lock washer through the skid plate into the nut on the bracket. Then re-install the factory mounting bolt.



Step 7: The 7" Mounting Bracket with Nut is installed at the rear, inboard side of the skid plate. Remove the factory mounting bolt that is above the slotted hole. Place the bracket in position and install one of the 3/8-16 x 1" Hex Head Bolts, a flat washer, and a lock washer through the skid plate into the nut on the bracket. Then re-install the factory mounting bolt.



Step 8: The Mounting Bracket w/o Nut is installed at the rear, outboard side of the skid plate, near the Skid Row logo. Again, remove the factory skid plate mounting bolt from the chassis. Then remove the nut that was installed on the carriage bolt. Place the bracket over the carriage bolt and install the flat washer, lock washer, and nut. Then re-install the factory mounting bolt through the bracket as shown.



Step 9: Use the remaining two carriage head bolts, flat washers, lock washers, and nuts to attach the gas tank skid plate to your Skid Row Offroad transfer case skid plate as shown below.




Step 10: Re-install the factory mounting bolt for the transfer case skid plate through the gas tank skid plate as shown.

Step 11: Tighten all the nuts and bolts and you're ready to hit the trail!

We hope you enjoy your new Skid Row Offroad gas tank skid plate!

Sincerely,

Your friends at Skid Row Offroad

<p>Skid Row Offroad 100 Creek Road, Carlisle, PA 17013 Phone 717-701-8315</p> <p>www.SkidRowOffroad.com</p>	 <p>Skid Row Offroad</p>
--	---