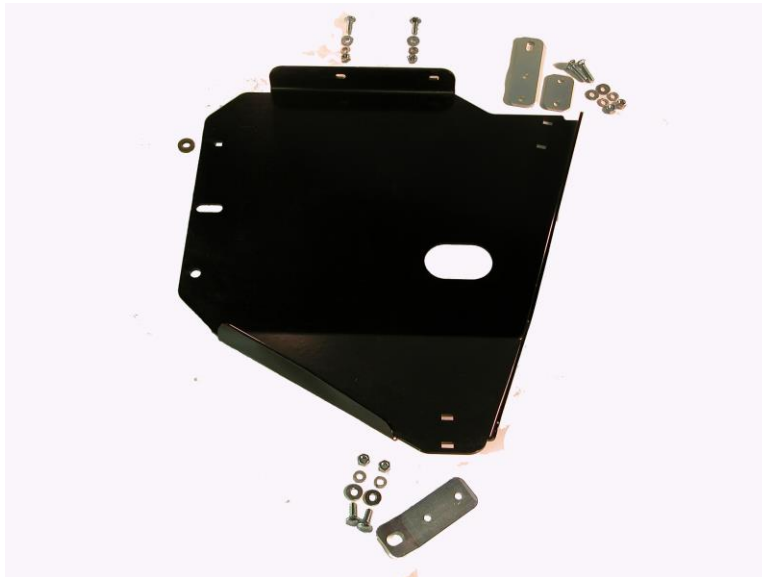


Installation Instructions  
for  
Transfer Case Skid Plate, JP-5013  
for  
2007-2018 Jeep® JK Wrangler

Thank you for purchasing your new Skid Row Offroad Transfer Case skid plate. It is designed to give you peace of mind while traversing even the toughest trails.

Your skid plate package should come complete with the following parts:

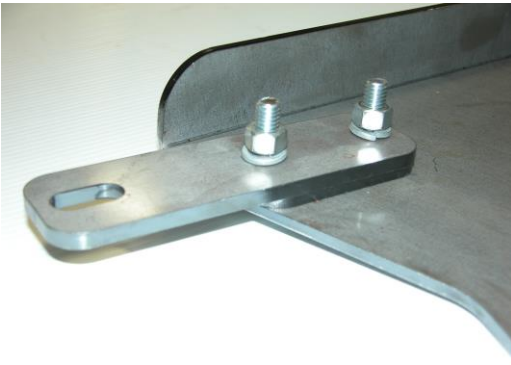
1. (1) Transfer Case Skid Plate
2. (1) Flat Mounting Bracket
3. (1) Bent Mounting Bracket
4. (1) 3/16" Thick, 2 Hole Spacer
5. (1) 3/16" Thick, Flat Washer
6. (2) 3/8-16 x 1.5" Carriage Head Bolts
7. (4) 3/8-16 x 1" Carriage Head Bolts
8. (6) 3/8-16 Hex Nuts
9. (6) 3/8 Flat Washers
10. (6) 3/8 Lock Washers



**Step 1:** Remove the factory Transfer Case skid plate and retain the four bolts. They will be re-used.



**Step 2:** Install the bent mounting bracket to the driver's side of the skid plate using two of the 1" carriage bolts as shown at left. Leave the bolts loose.



**Step 3:** Install the flat mounting bracket to the passenger side of the skid plate using the two 1.5" carriage bolts. Place the 3/16" thick, 2 hole spacer between the skid plate and the bracket as shown at left. Leave the bolts loose.

**Step 4:** Lift the transfer case skid plate into place. If you have our engine/transmission skid plate installed, slip the transfer case skid plate between the engine/transmission skid plate and the transmission crossmember. If you have our gas tank skid plate, be sure to get the two 1" long carriage bolts through the passenger side lip of the transfer case skid plate.

**Step 5:** Install the factory bolts at the rear of the transfer case skid plate.

**Step 6:** Re-install the two front bolts removed from the transmission crossmember. Leave them loose at this time in order to shift the skid plate if needed.

**Step 7:** If you have an engine/transmission skid plate installed, take the 3/16" thick flat washer and insert it between the skid plate and the transmission crossmember in the location noted with an arrow below.




**Step 8:** If using our gas tank skid plate, install the two 3/8-16 nuts, flat washers, and lock washers to the two carriage bolts that hold the transfer case skid plate to the gas tank skid.

**Step 9:** Tighten all the nuts and bolts and you're ready to hit the trail!

We hope you enjoy your new Skid Row Offroad Transfer Case skid plate!

Sincerely,

*Your friends at Skid Row Offroad*

<p><b>Skid Row Offroad</b> 100 Creek Road, Carlisle, PA 17013 Phone 717-701-8315</p> <p><a href="http://www.SkidRowOffroad.com">www.SkidRowOffroad.com</a></p>	 <p><b>Skid Row Offroad</b></p>
--	---