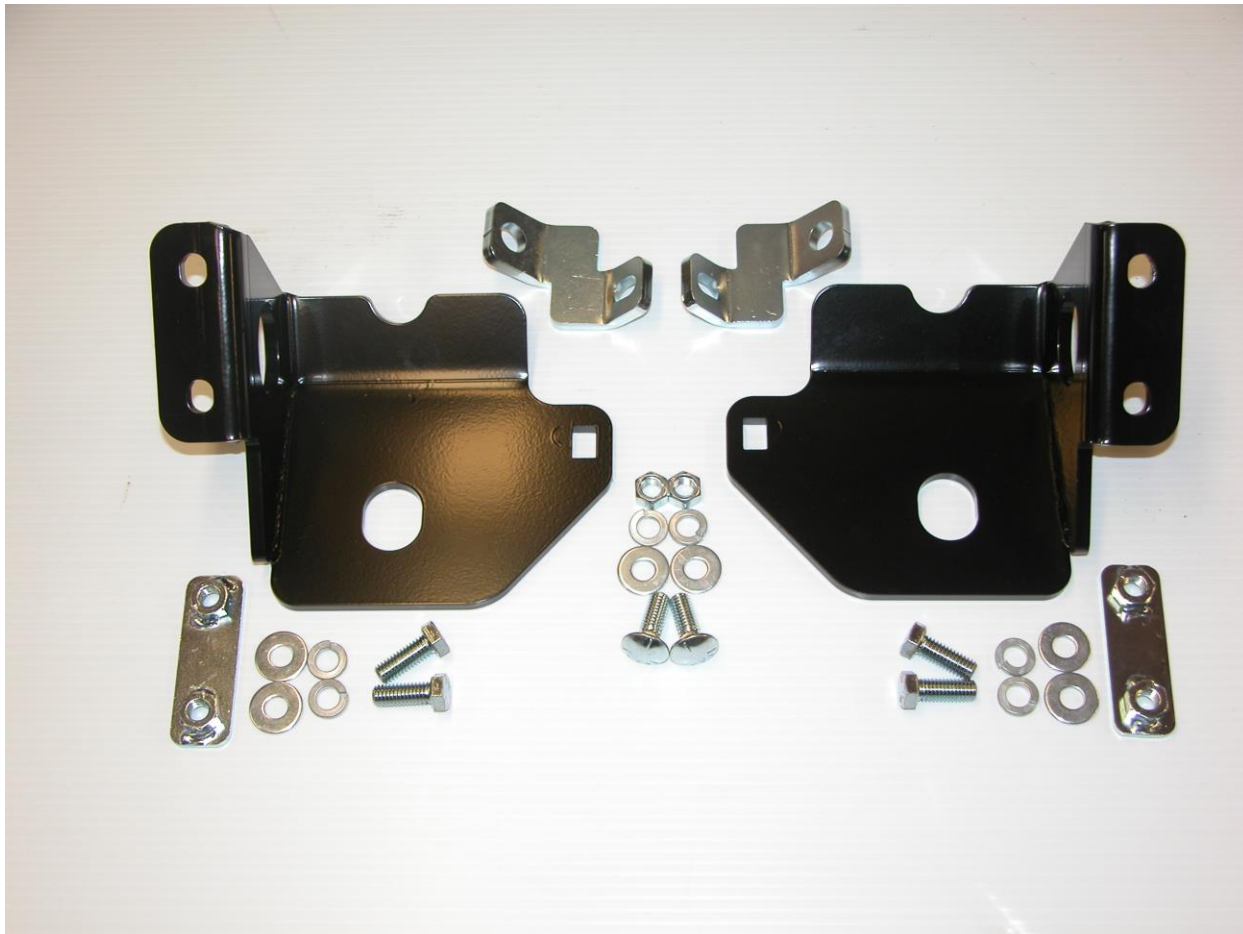


Installation Instructions  
for  
Lower Control Arm Skid Plates for Dana 30 & Dana 44  
Front Axle on 2007-2018 Jeep® JK

Thank you for purchasing your new Skid Row Offroad lower control arm skid plates. They are designed to give you peace of mind while traversing even the toughest trails.

Your skid plate package should come complete with the following parts:

1. (1) left control arm skid plate (shown on left)
2. (1) right control arm skid plate (shown on right)
3. (1) Left-hand Bracket
4. (1) Right-hand Bracket
5. (2) 3/8-16 UNC x 1.5" Carriage Head Bolts
6. (4) 3/8-16 UNC x 1" Hex Head Bolts
7. (2) 3/8-16 UNC Hex Nuts
8. (6) 3/8" Lock Washers
9. (6) 3/8" Flat Washers
10. (2) Nut Plates



**Step 1:** Read through the instructions from start to finish before starting this project. You should find the job easier.

**WARNING:** Be sure to support your vehicle with jack stands before getting under it! Do NOT depend on the jack to support your Jeep while you are working.

**Step 2:** If your vehicle is equipped with cam bolts for front end alignment, it is important that you mark their position so that you can maintain your vehicle's alignment. On the inboard side (away from the tire) use a marker or scribe to mark the position as shown in the photo at the right.



**Step 3:** Starting on the passenger side, it is necessary to drill one (1) hole in order to mount the skid plate. (We have absolutely no idea why Jeep put two holes on one side and only one on the other!) To do this, run one of the 3/8-16x1" bolts through one of the nut plates from the "nut" side. Place the nut plate up against the bottom of the shock mount with the threads of the bolt through the existing hole in the shock mount. This will allow you to accurately center punch the second hole. This is shown in the photo below. Once the hole is located, drill a 7/16" hole through the shock mount. You may find it helpful to drill a small (about 1/8") hole first, and then enlarge it to 7/16".



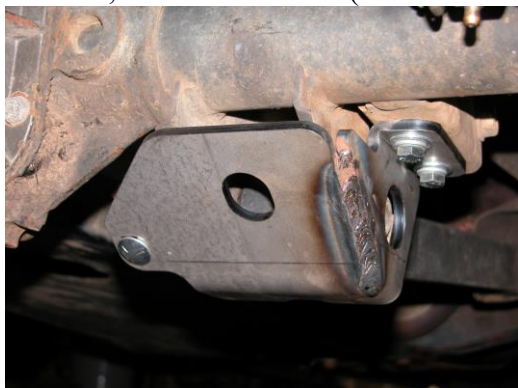
**Step 4:** Remove the nut from the lower control arm bolt. Place the right-side bracket over the control arm bolt as shown in the photo at right. Leave the nut loose at this time.

**Step 5:** Place the right side control arm skid in position and using a 3/8-16x1.5” carriage bolt, attach the skid plate to the bracket as shown to the right.

**Step 6:** Put one of the nut plates inside the shock mount with the nuts facing upward.



**Step 7:** Bolt the control arm skid plate to the shock mount using the 3/8-16x1” hex head bolts, lock washers, and flat washers. (Driver’s side shown below.)



**Step 8:** Once all of the bolts are installed, tighten them. Torque the nut on the lower control arm mounting bolt to the recommended torque. Sorry, but we can’t give a number for this since it varies based on model year and whether or not you are using factory or after-market control arms.

**Step 9:** For vehicles equipped with cam bolts turn the bolt head until the marks you made earlier line up and then torque.


**Step 10:** Once the passenger side is completed, install the driver’s side skid plate using the same procedure outlined above. However, no drilling is required to install the driver’s side skid plate.

**Step 11:** Once all of the bolts have been tightened, you are done and ready to hit the trail!

We hope you enjoy your new Skid Row Offroad lower control arm skid plates!

Sincerely,

*Your friends at Skid Row Offroad*

<p><b>Skid Row Offroad</b> 100 Creek Road, Carlisle, PA 17013 Phone 717-701-8315</p> <p><a href="http://www.SkidRowOffroad.com">www.SkidRowOffroad.com</a></p>	 <p><b>Skid Row Offroad</b></p>
--	---