

Installation Instructions  
for  
Evaporative Canister Guard  
for  
2007-2011 Jeep® JK

Thank you for purchasing your new Skid Row Offroad canister guard. It was designed to give you peace of mind while traversing even the toughest trails.

Your skid plate package should come complete with the following parts:

1. (1) Canister Guard Skid Plate
2. (1) Front Mounting Bracket
3. (1) Rear Mounting Bracket
4. (4) 3/8-16 UNC x 1.0" Carriage Head Bolts
5. (1) 3/8-16 UNC x 3" Hex Head Bolt
6. (5) 3/8-16 UNC Hex Nuts
7. (5) 3/8" Lock Washers
8. (5) 3/8" Flat Washers
9. (2) 7/16" Flat Washers
10. (1) 1/4" Thick Spacer (not shown)



**Step 1:** Read through the instructions from start to finish before starting this project. You should find the job easier.

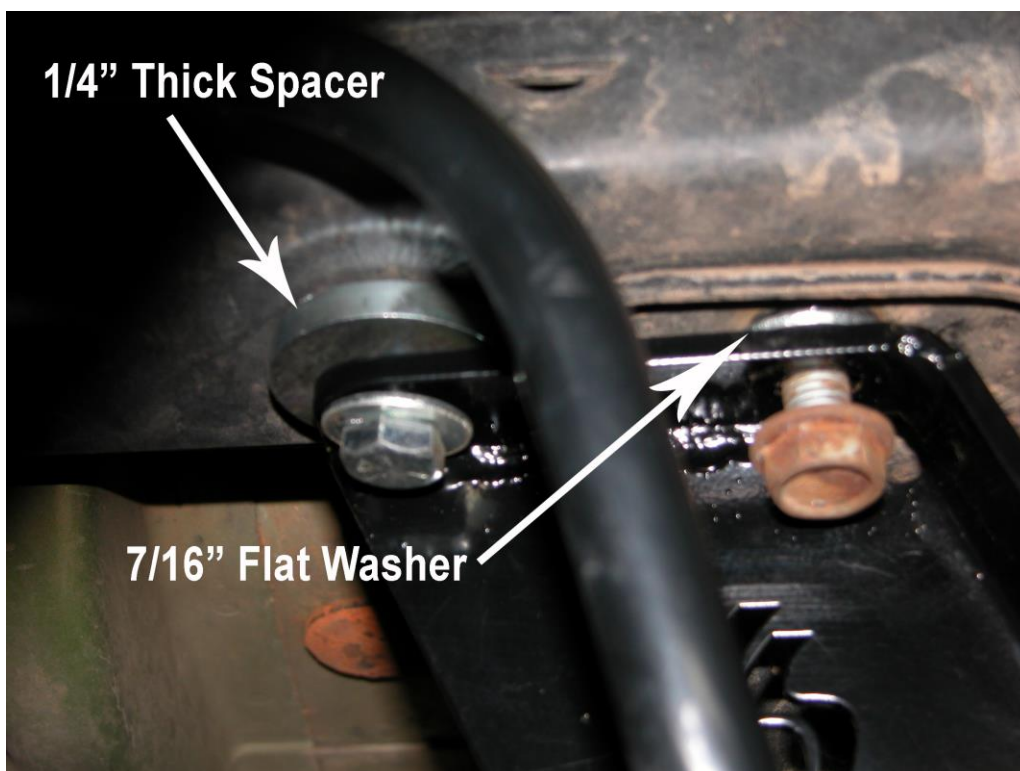
**WARNING:** Be sure to support your vehicle with jack stands before getting under it! Do NOT depend on the jack to support your Jeep while you are working.

**Step 2:** Begin by removing the two hex head bolts at the front of the evaporative canister mounting bracket. Using these two bolts, install the front mounting bracket which is shown in the upper left of the photo above. Tighten these two bolts at this time. These two bolts are tough to get to later if you have a two door model JK.

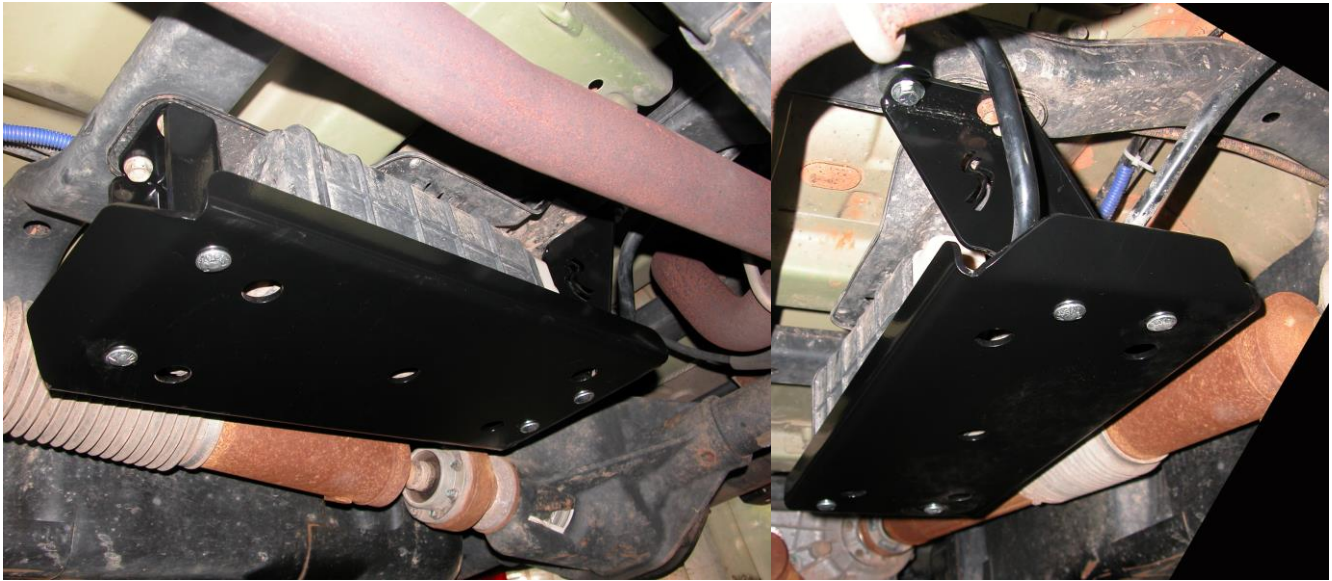
**Step 3:** At the rear of the evaporative canister remove the one bolt that attaches it to the chassis.

**Step 4:** Position the rear mounting bracket (with the logo) as shown in the photo at right. Loosely attach it to the chassis using the factory bolt with one of the 7/16" flat washers used as a spacer between the rear mounting bracket and the factory mounting bracket as shown in the photo below.

**Step 5:** Place the 1/4" thick spacer between the mounting bracket and the chassis. You will use the 3/8-16 UNC x 3" Hex Head Bolt to attach the bracket to the chassis. Place a 3/8" flat washer under the bolt head with one of the 7/16" flat washers, a lock washer, and hex nut on top.



**Step 6:** With both brackets loosely attached, bolt the canister guard skid plate to the mounting brackets using the 3/8-16 UNC x 1.0” Carriage Head Bolts. Put a 3/8” flat washer, a lock washer, and then a hex nut on top.




**Step 7:** Once all of the bolts are installed, tighten them. You may want to push the skid plate away from the driveshaft prior to tightening the bolts just to gain a little extra clearance.

**Step 8:** Once all of the bolts have been tightened, you are done and ready to hit the trail!

We hope you enjoy your new Skid Row Offroad canister guard!

Sincerely,

*Your friends at Skid Row Offroad*

<p><b>Skid Row Offroad</b> 100 Creek Road, Carlisle, PA 17013 Phone 717-701-8315</p> <p><a href="http://www.SkidRowOffroad.com">www.SkidRowOffroad.com</a></p>	<p></p> <p><b>Skid Row Offroad</b></p>
--	--