

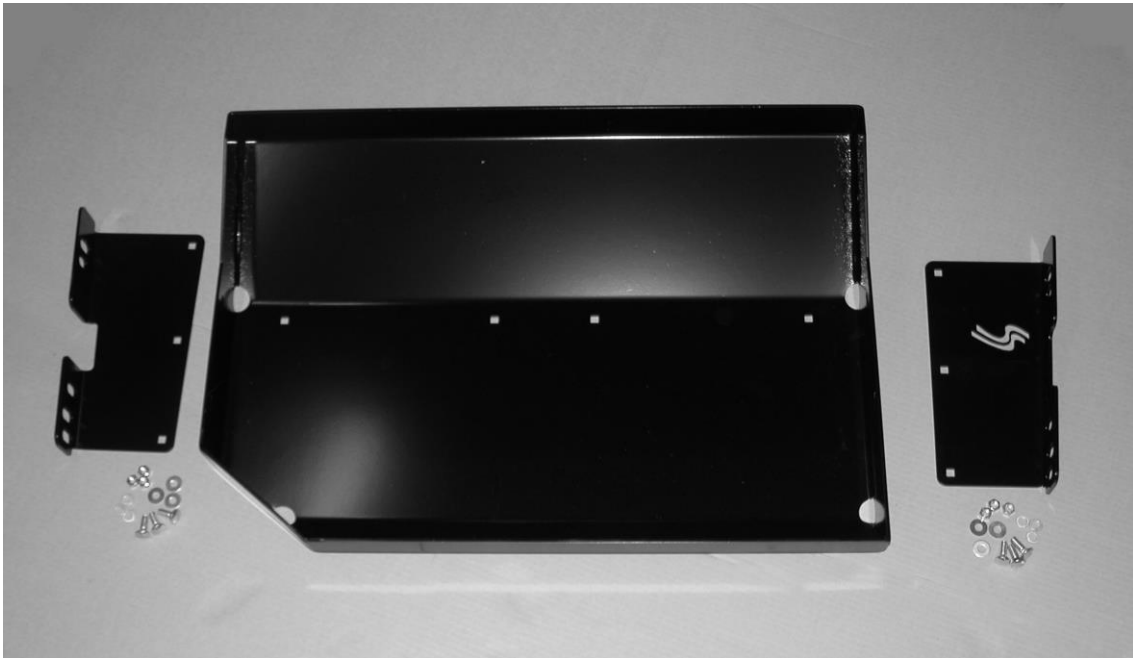


Gas Tank Skid Plate Installation Instructions for 1997-2001 Jeep® XJ Cherokee and 1993-1998 Jeep® ZJ Grand Cherokee

Thank you for purchasing your new Skid Row Offroad gas tank skid plate. It is designed to give you peace of mind while traversing even the toughest trails.

Your skid plate package should come complete with the following parts:

1. (1) Gas Tank Skid Plate
2. (1) Driver's Side Mounting Bracket (with logo)
3. (1) Passenger Side Mounting Bracket
4. (6) 3/8-16 UNC x 1" Carriage Head Bolts
5. (6) 3/8-16 UNC Hex Nuts
6. (6) 3/8" Lock Washers
7. (6) 3/8" Flat Washers



If you raise the vehicle to work on it, be sure to place jack stands under the vehicle before working underneath it!

Step 1: Four M12x1.75 x 30mm bolts, lock washers, and large flat washers are needed for this installation if your vehicle **does not** have a hitch installed. (**XJ models only**) If you have a hitch installed skip to Step 2. If you **do not** have a hitch installed already, you will need nut plates and bolts to install this gas tank skid plate. The nut plates can be purchased from Jeep and are referred to as Frame Reinforcements. They are Jeep part numbers 52001174 and 52001175. The rear bumper will need to be removed to install the nut plates.

Step 2: If you have a hitch installed it may need to be removed to install the gas tank skid plate.

Step 3: Remove the exhaust heat shield from the passenger side of the gas tank.

Step 4: (XJ models only) Remove the exhaust clamp from the rear exhaust hanger next to the gas tank. There is no need to remove the exhaust hanger itself from the unibody frame rail.



Step 5: Using the 4 bolts that held the mounting brackets to the bottom of the skid plate for shipping, and the additional hardware supplied, loosely assemble the brackets of the sides of the skid plate. Please note that the front of the skid plate has an angled contour on the passenger side corner. The driver's side of the skid uses the bracket with the logo cut into it. The passenger's side will not have a logo. Install the mounting brackets with the head of the carriage bolt on the inside of the skid plate. The mounting brackets will mount to the outside of the skid plate with the actual mounting flange itself pointing to the outside of the vehicle. Then install the flat washer, lock washer, and nut snugly, but do not tighten fully. This will allow you to move the mounting brackets in order to align with the holes in the frame.

Tip: If you have a clearance problem with a hitch, you can install the mounting brackets (one or both) to the inside of the skid plate to gain clearance.

Tip: To make installation with some hitches easier, the hitch can be left in place using the two bolts closest to the rear bumper to hold it in position. The skid plate can then be installed below the hitch.



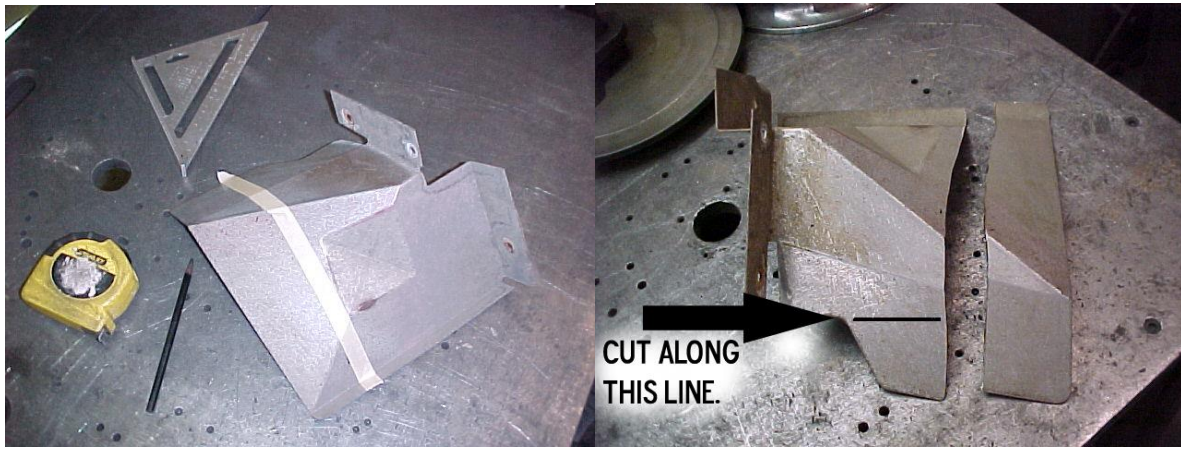
Shown above is the Jeep-sourced hitch installed with our gas tank skid plate above the hitch on the left and below it on the right.

Step 6: Using a floor jack raise the gas tank skid plate into place over the gas tank. Make sure that the skid plate ends up between the gas tank mounting bolts at the front of the gas tank and the gas tank itself. If you have a hitch it would be re-installed at this time.

Step 7: Install the four M12x1.75 x 30mm bolts and large flat washers into the nut plates or chassis.

Step 8: Tighten all hardware once everything is fit together.

Step 9: (XJ models only) Re-install the rear exhaust clamp and you're done.







(ZJ models only) You will need to cut the exhaust shield to fit above the skid plate. Make a pencil mark 5” down from the lower mounting surface and 7 3/8” from the higher mounting surface. Mark a straight line across the shield connecting the two marks you made and cut along this line. Masking tape works well for marking the cut line. You will also need to cut the rear of the exhaust shield even with the vertical edge as shown in the photo above, right. Once both cuts are made, reinstall the exhaust shield. ***Do not leave the exhaust shield off! The gas tank is plastic and the heat from the exhaust pipe can damage the tank.*** Once the shield has been re-installed, tighten all the bolts and you’re done.

We hope you enjoy your new Skid Row Offroad gas tank skid plate!

Sincerely,

Your friends at Skid Row Offroad

<p>Skid Row Offroad 100 Creek Road, Carlisle, PA 17013 Phone 717-701-8315</p> <p>www.SkidRowOffroad.com</p>	<p>   </p> <p>Skid Row Offroad</p>
--	--