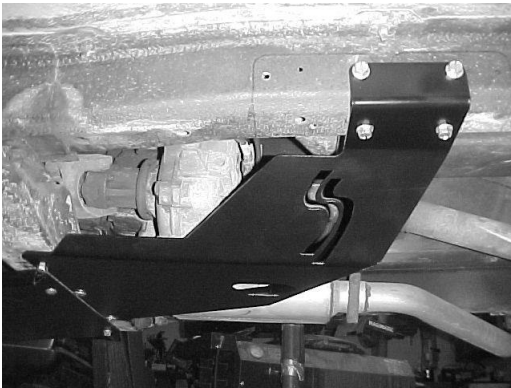


Installation Instructions  
for  
Transfer Case Skid Plate for  
1984-2001 Jeep® XJ Cherokee

Thank you for purchasing your new transfer case skid plate. It is designed to give you peace of mind while traversing even the toughest trails.

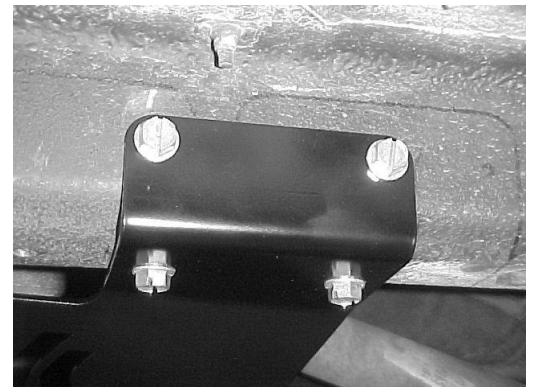
Your skid plate package should come complete with the following parts:

1. (1) Transfer Case Skid Plate
2. (3) 3/8-16 UNC x 3" Carriage Head Bolts
3. (3) 3/8-16 UNC Hex Nuts
4. (3) 3/8" Lock Washers
5. (3) 3/8" Flat Washers
6. (4) 3/8-16x 1" Self-tapping Bolts



**Step 1:** Place the skid plate up against the frame rail and the transmission cross-member in the position shown. The three square holes in the skid plate should line up with holes in the cross-member for most XJ's.

**Step 2:** With the skid plate located, use a jack to hold the skid plate up against the frame rail and then drill the four (4) 5/16" holes into the frame rail. Then install the four (4) 3/8-16 self-tapping bolts. **Make sure the skid plate is tight up against the frame rail before drilling! Don't worry if the front edge of the skid plate is lower than the cross-member. The skid plate was designed to accommodate a 1" cross-member drop.**



**Step 3:** The 3” long carriage bolts go through the square holes at the leading edge of the skid plate. Most XJ’s will have holes in the transmission cross-member that go through both sides of the cross-member. However, some XJ’s will not. If your Jeep does not have these holes or if the holes are too small, drill 3/8” holes through the cross-member to attach the skid plate. Push the carriage bolts through the transmission cross-member and install a lock washer and nut on each. **If the transmission cross-member has not been lowered, it may be helpful to use a jack to push the skid plate up against the cross-member for drilling and bolt installation.**




**Step 4:** Tighten all hardware and you’re done!

We hope you enjoy your new Skid Row Offroad transfer case skid plate!

Sincerely,

*Your friends at Skid Row Offroad*

<p><b>Skid Row Offroad</b> 100 Creek Road, Carlisle, PA 17013 Phone 717-701-8315</p> <p><a href="http://www.SkidRowOffroad.com">www.SkidRowOffroad.com</a></p>	<p> <b>Skid Row Offroad</b></p>
--	---