



Nitrous Pump & Filter Maintenance

PART NUMBER 00-68002

MAINTENANCE INSTRUCTIONS

CAUTION - REMOVE PUMP FROM AIR SUPPLY BEFORE DISASSEMBLY:

These rebuild instructions are designed specifically for the Nitrous Outlet (HII) Nitrous Pump. If you need any assistance or if you have questions about this nitrous pump maintenance, call our Tech Help Line at (254) 848-4300. The nitrous pump drive side requires routine lubricating maintenance to insure longevity. The spool-type control valve incorporates dynamic O-rings which are lubricated with a light grease from the factory. Periodically, these valve O-rings should be wiped clean and regreased for reliable operation. The frequency will be determined by many variables such as air moisture content, contamination, and frequency of use.

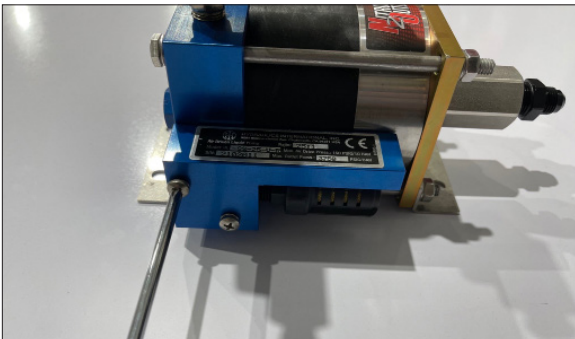
The nitrous pump is designed so that the spool/O-ring assembly is easily accessible with simple hand tools without disassembling any other sections of the drive.

The typical symptom indicating need for regreasing the O-rings is a slow, erratic cycling. (Use the current Maintenance steps we have.)

* Periodically check nitrous filter for contaminants. To clean the nitrous filter, unscrew the end of the filter housing and remove the filter element. Rinse the filter element with brake cleaner and blow off with compressed air.

Tools Needed for Installation*:

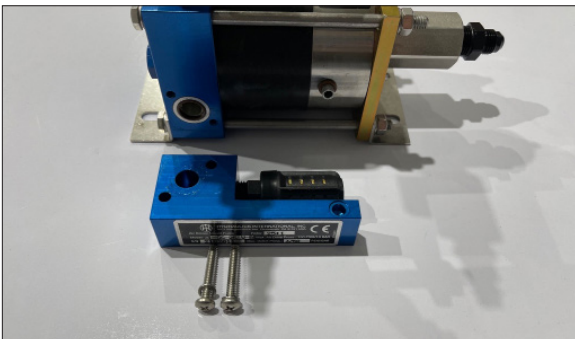
- Pick
- (2) 7/16" Wrenches
- 11/16" Wrench
- 13/16" Wrench
- 1-1/8" Wrench
- Phillips Head Screwdriver
- Table Vise



Periodic Maintenance

Step 1:

Using a Phillips head screwdriver, remove the two screws from the muffer retainer and pull it off of the pump.



IMPORTANT: All appropriate safety equipment (gloves, tools etc.) must be used during the installation of this product(s). Nitro Dave's LLC accepts NO responsibility for injuries resulting in the installation of any product(s). Nitrous oxide is for off-road use only.

WWW.NITROUSOUTLET.COM/INSTALLATION-GUIDES



Nitrous Pump & Filter Maintenance

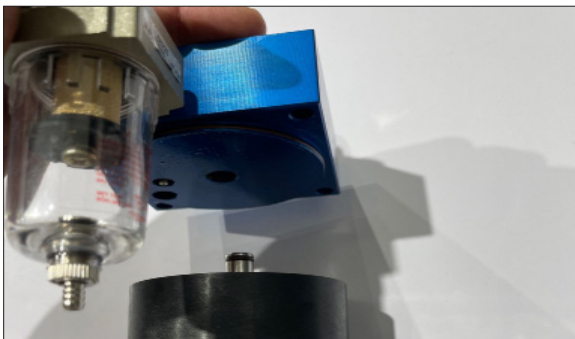
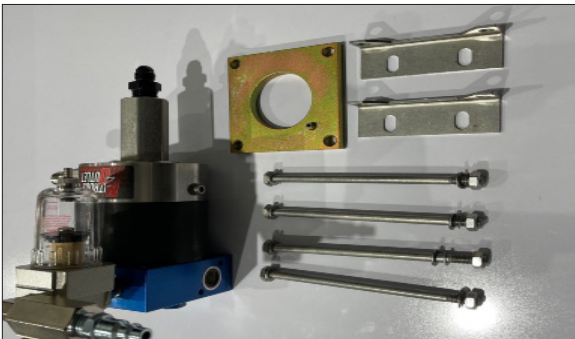
PART NUMBER 00-68002

MAINTENANCE INSTRUCTIONS



Step 2:

Using two 7/16" wrenches, remove the four bolts and nuts holding the pump and mounting brackets.



Step 3:

Remove upper air drive cap from the plunger and drive barrel by pulling it upward.



Step 4:

Using an 11/16" wrench, remove the plug and cover plate from the upper air drive cap.

IMPORTANT: All appropriate safety equipment (gloves, tools etc.) must be used during the installation of this product(s). Nitro Dave's LLC accepts NO responsibility for injuries resulting in the installation of any product(s). Nitrous oxide is for off-road use only.

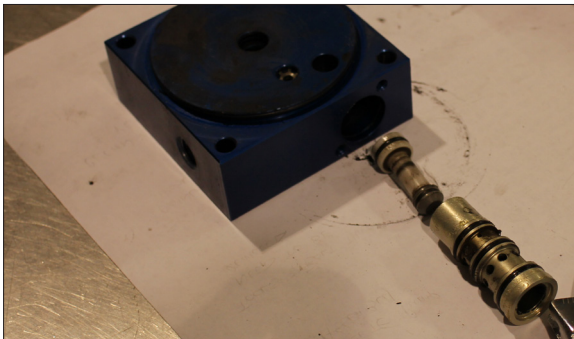
WWW.NITROUSOUTLET.COM/INSTALLATION-GUIDES



Nitrous Pump & Filter Maintenance

PART NUMBER 00-68002

MAINTENANCE INSTRUCTIONS



Step 5:

Use a pick to push the sleeve out of the upper air drive cap.

Note: Some force may be required to remove the sleeve.



Step 6:

Use a lint-free cloth to clean the sleeve, spool, o-ring areas, and inside the air drive cap as best as possible.



Step 7:

Apply light grease to sleeve, spool, o-ring areas, and inside the air drive cap. We typically use white lithium grease.

IMPORTANT: All appropriate safety equipment (gloves, tools etc.) must be used during the installation of this product(s). Nitro Dave's LLC accepts NO responsibility for injuries resulting in the installation of any product(s). Nitrous oxide is for off-road use only.

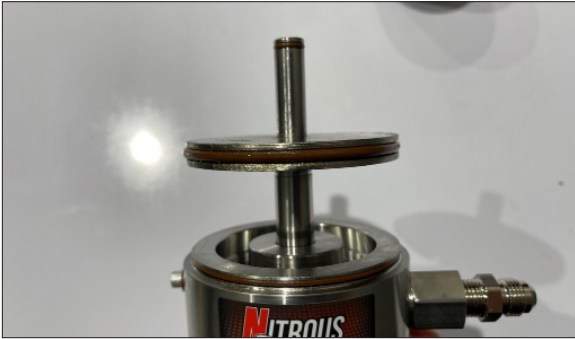
WWW.NITROUSOUTLET.COM/INSTALLATION-GUIDES



Nitrous Pump & Filter Maintenance

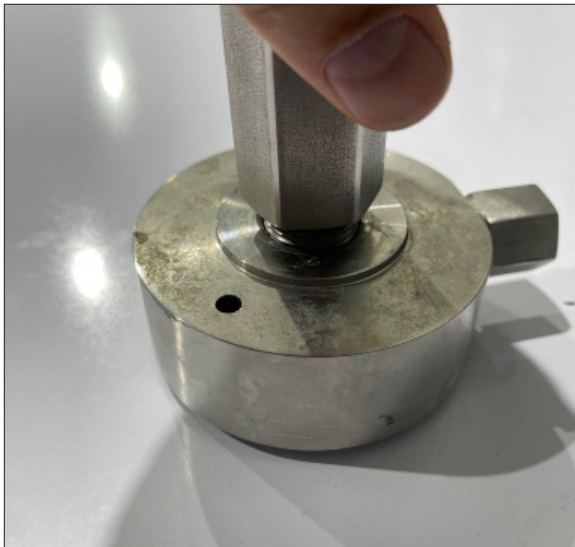
PART NUMBER 00-68002

MAINTENANCE INSTRUCTIONS



Step 8:

Remove the piston and plunger from the hydraulic body by pulling it upward.



Step 9:

Place the hydraulic body in a table vise and use a 1-1/8" wrench to remove the inlet fitting.



Step 10:

Be sure to keep all of the parts in the same order as they came out.

IMPORTANT: All appropriate safety equipment (gloves, tools etc.) must be used during the installation of this product(s). Nitro Dave's LLC accepts NO responsibility for injuries resulting in the installation of any product(s). Nitrous oxide is for off-road use only.

WWW.NITROUSOUTLET.COM/INSTALLATION-GUIDES



Nitrous Pump & Filter Maintenance

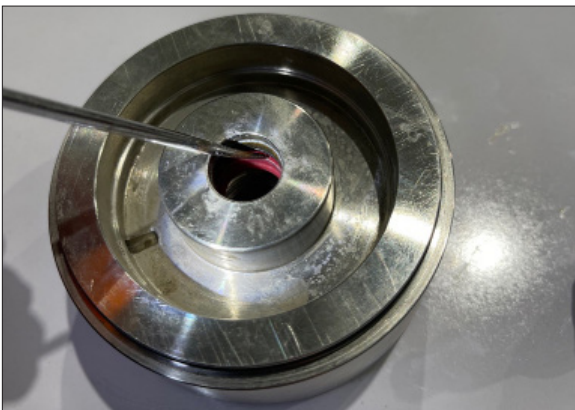
PART NUMBER 00-68002

MAINTENANCE INSTRUCTIONS



Step 11:

Remove the spring over the upper loader-seal.



Step 12:

Use a pick to remove the plunger seal, bearing, loader back-up-seal, and upper loader-seal from the hydraulic body. Be careful not to damage the red plunger seal.

*** (p/n 80033-7)*

IMPORTANT: All appropriate safety equipment (gloves, tools etc.) must be used during the installation of this product(s). Nitro Dave's LLC accepts NO responsibility for injuries resulting in the installation of any product(s). Nitrous oxide is for off-road use only.

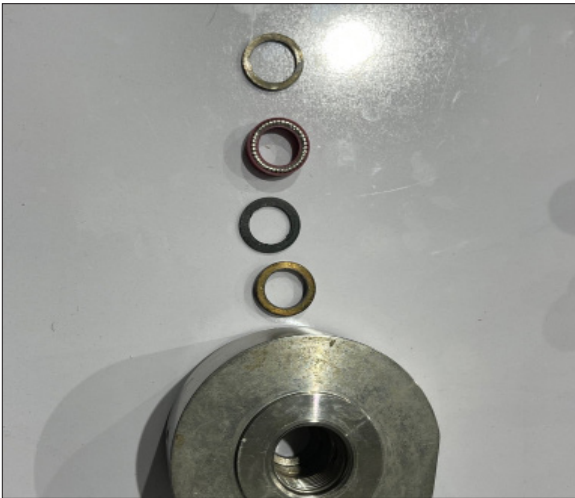
WWW.NITROUSOUTLET.COM/INSTALLATION-GUIDES



Nitrous Pump & Filter Maintenance

PART NUMBER 00-68002

MAINTENANCE INSTRUCTIONS



Step 13:

Put the plunger seal, bearing, loader backup-seal, and upper loader-seal back in the same order in which they came out.



Step 14:

Reposition the hydraulic body in the table vise. Use a 13/16" wrench to remove the outlet fitting.

IMPORTANT: All appropriate safety equipment (gloves, tools etc.) must be used during the installation of this product(s). Nitro Dave's LLC accepts NO responsibility for injuries resulting in the installation of any product(s). Nitrous oxide is for off-road use only.

WWW.NITROUSOUTLET.COM/INSTALLATION-GUIDES



Nitrous Pump & Filter Maintenance

PART NUMBER 00-68002

MAINTENANCE INSTRUCTIONS



Step 15:

Reinstall the 1/4 check seat. Make sure to keep the parts in the same order in which they came out.



Step 16:

Reverse the disassembly process and reassemble the pump.

IMPORTANT: All appropriate safety equipment (gloves, tools etc.) must be used during the installation of this product(s). Nitro Dave's LLC accepts NO responsibility for injuries resulting in the installation of any product(s). Nitrous oxide is for off-road use only.

WWW.NITROUSOUTLET.COM/INSTALLATION-GUIDES