



12lb Carbon Nitrous Bottle Stand

PART NUMBER: 00-68012

ASSEMBLY INSTRUCTIONS

The Nitrous Outlet 12lb Nitrous Bottle Stand is designed to provide a light weight and rigid stand to aid in filling 12lb carbon nitrous bottles. If you need any assistance during assembly or if you have questions about this bottle mounting bracket, call our Tech Help Line at (254) 848-4300.

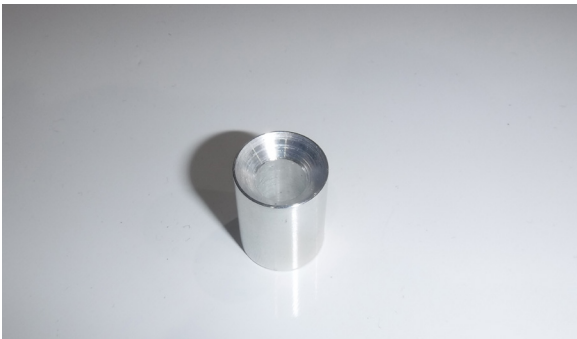
Tools Needed for Assembly:

- 3/16" Allen Wrench
- Loctite



Installation Tip:

Red Loctite is recommended on all threaded fasteners.



Step 1:

Locate the 3/4" long spacer with the countersink.



Step 2:

Locate the 1-1/2" long flat head screw and insert it into the 3/4" long spacer so that the head is flush.

IMPORTANT: All appropriate safety equipment (gloves, tools etc.) must be used during the installation of this product(s). Nitro Dave's LLC accepts NO responsibility for injuries or damages resulting during and/or from the installation of any product(s). Nitrous oxide is for off-road use only.

WWW.NITROUSOUTLET.COM/INSTALLATION-GUIDES



12lb Carbon Nitrous Bottle Stand

PART NUMBER: 00-68012

ASSEMBLY INSTRUCTIONS



Step 3:

Insert the 1-1/2" long screw with spacer into the plate with the small hole in the middle. All 4 screws and spacers should be on the same side of the plate.



Step 4:

Thread the 6-1/4" long spacers onto the screws, sandwiching the plate between them and the short spacers. Using a 3/16" Allen wrench, tighten the spacers in place.



Step 5:

Place the plate with the logo on top of the long spacers, making sure to align the holes with the threaded holes in the end of each spacer.



Step 4:

Using a 3/16" Allen wrench, install the 1/2" long screws into the long spacers through the top plate.

IMPORTANT: All appropriate safety equipment (gloves, tools etc.) must be used during the installation of this product(s). Nitro Dave's LLC accepts NO responsibility for injuries or damages resulting during and/or from the installation of any product(s). Nitrous oxide is for off-road use only.

WWW.NITROUSOUTLET.COM/INSTALLATION-GUIDES

NITROUS OUTLET | 305 SOUTH 28TH STREET | WACO, TX 76710 | P: 254-848-4300 | WWW.NITROUSOUTLET.COM



12lb Carbon Nitrous Bottle Stand

PART NUMBER: 00-68012

ASSEMBLY INSTRUCTIONS



Conclusion:

You have finished the bottle stand assembly.

IMPORTANT: All appropriate safety equipment (gloves, tools etc.) must be used during the installation of this product(s). Nitro Dave's LLC accepts NO responsibility for injuries or damages resulting during and/or from the installation of any product(s). Nitrous oxide is for off-road use only.

WWW.NITROUSOUTLET.COM/INSTALLATION-GUIDES

NITROUS OUTLET | 305 SOUTH 28TH STREET | WACO, TX 76710 | P: 254-848-4300 | WWW.NITROUSOUTLET.COM