



2017-2021 Camaro ZL1 Plate Conversion

PART NUMBER 00-42034

INSTALLATION INSTRUCTIONS

This Nitrous Outlet vehicle specific plate conversion is designed specifically for the 2017-2021 Chevrolet Camaro ZL1. If you need any assistance during installation or if you have questions about this plate conversion, call our Tech Help Line at (254) 848-4300.

Tools Needed for Installation*:

- 10mm Deep Socket
- Ratchet
- Flat Head Screwdriver

***These are the tools required for installation of this kit on a stock vehicle. If your vehicle has aftermarket parts, other tools may be required.**



Step 1:

Make sure your vehicle is keyed off. Open the hood. Disconnect the PCV hose.



Step 2:

Disconnect the IAT sensor.



Step 3:

Using a flathead screwdriver, loosen the hose clamps on the intake tube then remove the tube from the vehicle.

IMPORTANT: All appropriate safety equipment (gloves, tools etc.) must be used during the installation of this product(s). Nitro Dave's LLC accepts NO responsibility for injuries resulting in the installation of any product(s). Nitrous oxide is for off-road use only.

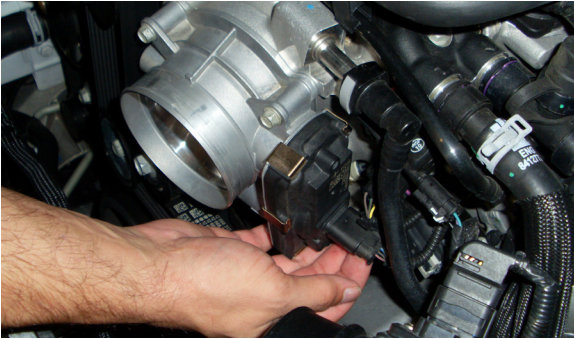
WWW.NITROUSOUTLET.COM/INSTALLATION-GUIDES



2017-2021 Camaro ZL1 Plate Conversion

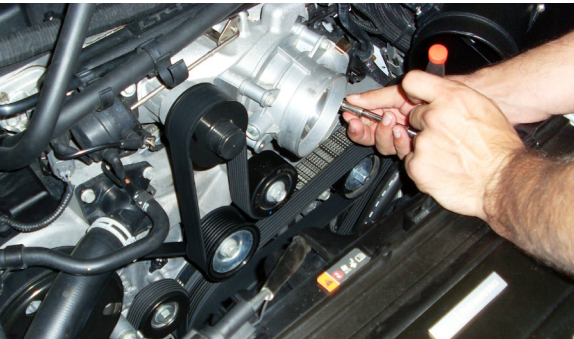
PART NUMBER 00-42034

INSTALLATION INSTRUCTIONS



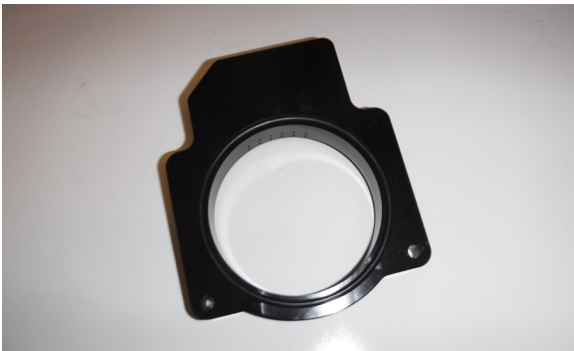
Step 4:

Disconnect the TPS sensor.



Step 5:

Using a 10mm deep socket and ratchet, remove the 4 throttle body bolts.



Step 6:

Make sure that the intake manifold and nitrous plate O-rings are intact and properly seated in place.



Step 7:

Place the throttle body plate in between the throttle body and intake manifold with the logo facing the front of the vehicle making sure that the O-rings are intact and properly seated in the throttle body and nitrous plate. Use the four 6mm bolts included with your nitrous system and a 10mm deep socket to mount the plate and throttle body.

IMPORTANT: All appropriate safety equipment (gloves, tools etc.) must be used during the installation of this product(s). Nitro Dave's LLC accepts NO responsibility for injuries resulting in the installation of any product(s). Nitrous oxide is for off-road use only.

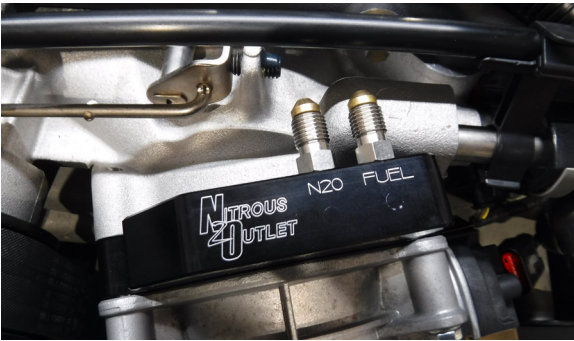
WWW.NITROUSOUTLET.COM/INSTALLATION-GUIDES



2017-2021 Camaro ZL1 Plate Conversion

PART NUMBER 00-42034

INSTALLATION INSTRUCTIONS



Step 8:

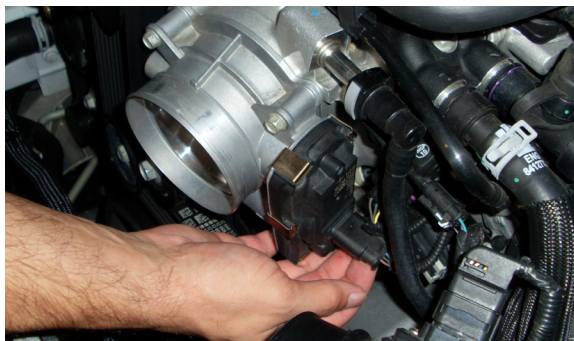
Install the nitrous and fuel jet into the nitrous plate. The plate is engraved N2O for nitrous jet location and engraved FUEL for fuel jet location.

****Note:** Use the jet card that came with the nitrous system to choose the correct jetting recommendation for your desired horsepower.



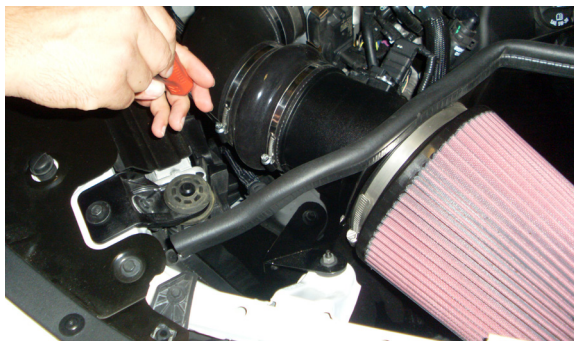
Step 9:

Connect your nitrous and fuel lines to the EFI plate.



Step 10:

Reconnect the TPS sensor.



Step 11:

Reinstall the intake tube.

IMPORTANT: All appropriate safety equipment (gloves, tools etc.) must be used during the installation of this product(s). Nitro Dave's LLC accepts NO responsibility for injuries resulting in the installation of any product(s). Nitrous oxide is for off-road use only.

WWW.NITROUSOUTLET.COM/INSTALLATION-GUIDES



2017-2021 Camaro ZL1 Plate Conversion

PART NUMBER 00-42034

INSTALLATION INSTRUCTIONS



Step 12:

Reconnect the IAT sensor.



Step 13:

Reconnect the PCV hose.



CONCLUSION

You have finished your installation.

IMPORTANT: All appropriate safety equipment (gloves, tools etc.) must be used during the installation of this product(s). Nitro Dave's LLC accepts NO responsibility for injuries resulting in the installation of any product(s). Nitrous oxide is for off-road use only.

WWW.NITROUSOUTLET.COM/INSTALLATION-GUIDES