



# 2016-2021 6th Gen Camaro X-Brace Bottle Mounting Bracket Plate

PART NUMBER 00-33008

## INSTALLATION INSTRUCTIONS

This Nitrous Outlet vehicle specific single bottle mounting plate is designed specifically for the 2016-2021 Chevrolet Camaro. If you need any assistance during installation or if you have questions about this bottle mounting bracket, call our Tech Help Line at (254) 848-4300.

### Tools Needed for Installation\*:

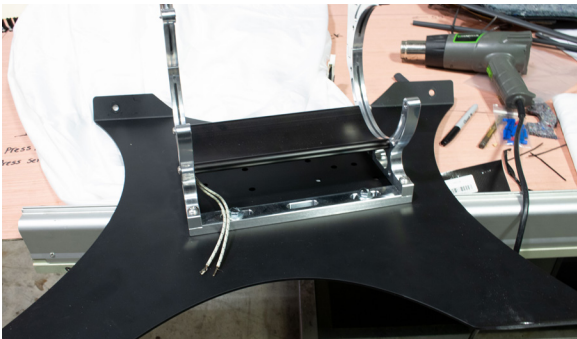
- 5/62" Allen Wrench
- 7/16" Wrench
- 11/16" Wrench
- Razor Blade
- Drill
- 5/16" Drill Bit
- 3/8" Drill Bit
- Marker
- Center Punch

**\*These are the tools required for installation of this kit on a stock vehicle. If your vehicle has aftermarket parts, other tools may be required.**



### Step 1:

Open the trunk of your vehicle and remove the floor/spare tire cover.



### Step 2:

Mount the bottle bracket on the bottle mount in the desired location and tighten the bolts with a 7/16" wrench. Be sure and use washers on both the bolt and the nut.

*\*Shown with optional Heated Bracket P/N 00-32018-6\**



### Step 3:

With the floor/ spare tire cover out of the vehicle, place bottle mount in trunk, centered, with the top of the mount against the rear seat brace and mark the six holes. Remove the bottle mount.

**IMPORTANT:** All appropriate safety equipment (gloves, tools etc.) must be used during the installation of this product(s). Nitro Dave's LLC accepts NO responsibility for injuries resulting in the installation of any product(s). Nitrous oxide is for off-road use only.

[WWW.NITROUSOUTLET.COM/INSTALLATION-GUIDES](http://WWW.NITROUSOUTLET.COM/INSTALLATION-GUIDES)



# 2016-2021 6th Gen Camaro X-Brace Bottle Mounting Bracket Plate

PART NUMBER 00-33008

## INSTALLATION INSTRUCTIONS



Check under the area you are drilling to ensure it is clear of any electrical or fuel systems components. If it is clear, use a 3/8" drill bit to drill the holes you marked on the trunk floor.



Use a 5/16" drill bit to drill the holes you marked on the rear seat brace.



**Step 5:**  
Install 1/4"-20 Rivet Nuts in the two bottom holes.



**Step 6:**  
Place the floor/ spare tire cover face down on a flat surface. Measure a 1/4" line along the straight edge of the cardboard closest to the insulation. Peel the carpet away from the cardboard just enough to clear the marked line. Trim the 1/4" marked area off the cardboard.

**IMPORTANT:** All appropriate safety equipment (gloves, tools etc.) must be used during the installation of this product(s). Nitro Dave's LLC accepts NO responsibility for injuries resulting in the installation of any product(s). Nitrous oxide is for off-road use only.

[WWW.NITROUSOUTLET.COM/INSTALLATION-GUIDES](http://WWW.NITROUSOUTLET.COM/INSTALLATION-GUIDES)



# 2016-2021 6th Gen Camaro X-Brace Bottle Mounting Bracket Plate

PART NUMBER 00-33008

## INSTALLATION INSTRUCTIONS



### Step 7:

Reinstall the floor/ spare tire cover. Using a 7/16" wrench and 5/32" Allen wrench, install the top of the bottle mount using the provided 1/4"-20 bolts and nuts.



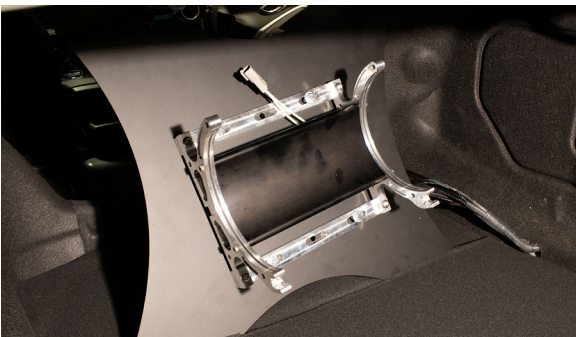
### Step 8:

Mark the carpet for slots that the bottle mount will slide through and slide the carpet out from under the bottle mount.



### Step 9:

Using a razor blade, cut a slot between the marks in the carpet.



### Step 10:

Reinstall the floor/spare tire cover by sliding it under the bottle mount making sure that the bottom tabs of the mount insert in to the slots in the carpet.

**IMPORTANT:** All appropriate safety equipment (gloves, tools etc.) must be used during the installation of this product(s). Nitro Dave's LLC accepts NO responsibility for injuries resulting in the installation of any product(s). Nitrous oxide is for off-road use only.

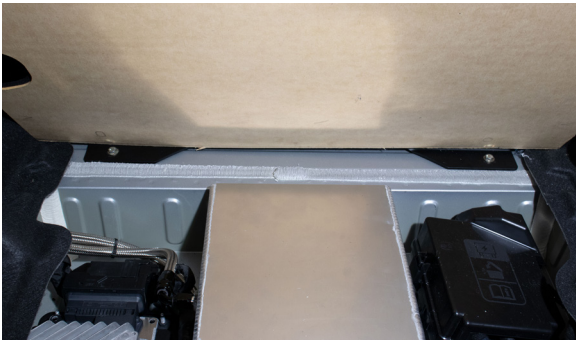
[WWW.NITROUSOUTLET.COM/INSTALLATION-GUIDES](http://WWW.NITROUSOUTLET.COM/INSTALLATION-GUIDES)



# 2016-2021 6th Gen Camaro X-Brace Bottle Mounting Bracket Plate

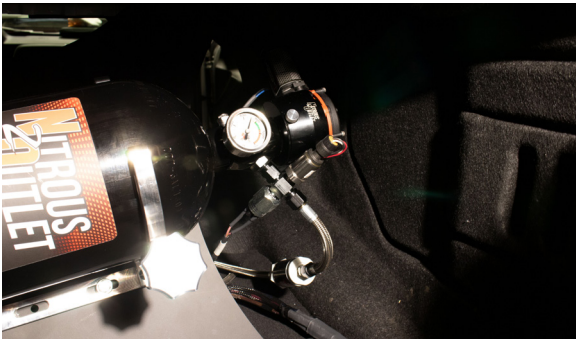
PART NUMBER 00-33008

## INSTALLATION INSTRUCTIONS



### Step 11:

Lift the spare tire cover to access the mount tabs under the carpet to install the final two 1/4"-20 bolts in the Rivet Nuts in the floor of the trunk using a 5/32" Allen wrench.



### Step 12:

Mount the bottle and tighten the feed line onto it with an 11/16" wrench.



### Conclusion

You have finished your installation.

**IMPORTANT:** All appropriate safety equipment (gloves, tools etc.) must be used during the installation of this product(s). Nitro Dave's LLC accepts NO responsibility for injuries resulting in the installation of any product(s). Nitrous oxide is for off-road use only.

[WWW.NITROUSOUTLET.COM/INSTALLATION-GUIDES](http://WWW.NITROUSOUTLET.COM/INSTALLATION-GUIDES)



# Do-It-Yourself Riv-Nut Installation Instructions

## INSTALLATION INSTRUCTIONS

This document is used for Do-It-Yourself Riv-Nut installation instructions. If you need any assistance during installation or if you have questions about this plate system, call our Tech Help Line at (254) 848-4300.

### Tools Needed for Installation\*:

- 1/2" Wrench
- 7/16" Wrench
- 1/4"-20 Bolt about 1 1/2" long (Does not have to be a socket head)
- 1/4"-20 Nut
- 5/16-18" Nut

\*These are the tools required for installation of this kit on a stock vehicle. If your vehicle has aftermarket parts, other tools may be required.



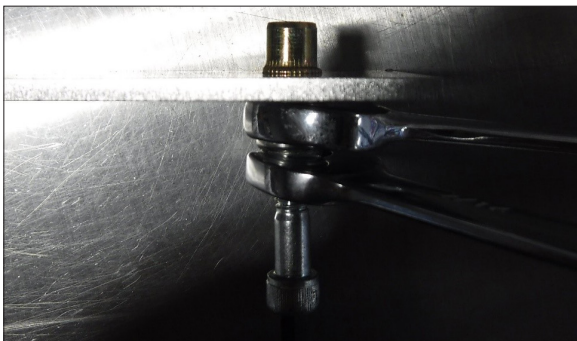
### Step 1:

Thread the 1/4-20 nut all the way onto the 1/4-20 bolt. Slide the bigger nut over the 1/4-20 bolt and then thread the rivnut onto the 1/4-20 bolt.



### Step 2:

Insert rivnut assembly into an 1 1/32" hole



### Step 3:

Use both the 7/16" and 1/2" wrench. Hold the 1/2" wrench still and tighten the 1/4-20 nut till it stops.

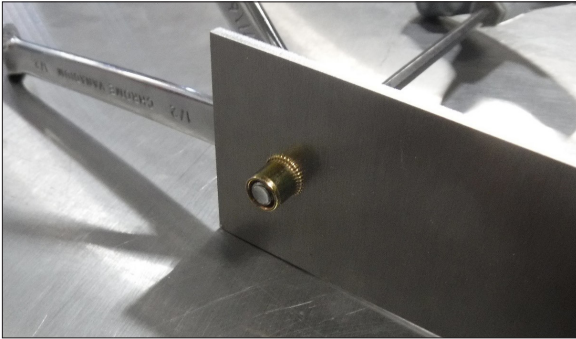
**IMPORTANT:** All appropriate safety equipment (gloves, tools etc.) must be used during the installation of this product(s). Nitro Dave's LLC accepts NO responsibility for injuries resulting in the installation of any product(s). Nitrous oxide is for off-road use only.

[WWW.NITROUSOUTLET.COM/INSTALLATION-GUIDES](http://WWW.NITROUSOUTLET.COM/INSTALLATION-GUIDES)



# Do-It-Yourself Riv-Nut Installation Instructions

## INSTALLATION INSTRUCTIONS



### Step 4:

Un-thread the 1/4-20 bolt with the nuts to complete the install.



**IMPORTANT:** All appropriate safety equipment (gloves, tools etc.) must be used during the installation of this product(s). Nitro Dave's LLC accepts NO responsibility for injuries resulting in the installation of any product(s). Nitrous oxide is for off-road use only.

[WWW.NITROUSOUTLET.COM/INSTALLATION-GUIDES](http://WWW.NITROUSOUTLET.COM/INSTALLATION-GUIDES)