



2015+ MOPAR LX

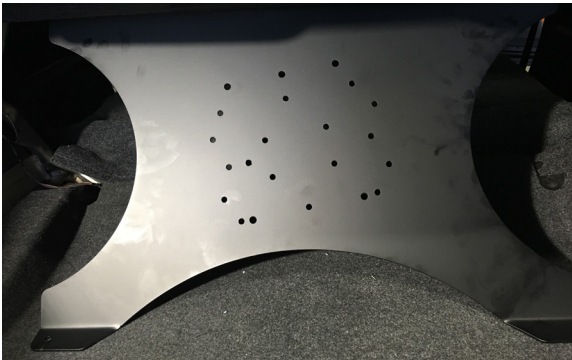
VEHICLE SPECIFIC BOTTLE BRACKET MOUNT 00-33006

INSTALLATION INSTRUCTIONS

This installation guide is for the 2015+ Mopar LX Vehicle Specific Bottle Bracket Mount P/N 00-33006. If you have any questions about the product or install process, call our Tech Help Line at (254)848-4300.

Tools Needed For Installation:

- Electric Drill
- 5/16" Drill Bit
- 1/2" Wrench x 2
- 5/16" Hex Wrench
- Dremel Tool w/ Cutting Bit



Step 1:

Lower the back seat and place the bracket in the center of the trunk. Make sure that it's in the center so you can mark the holes you'll need to drill for the mounting bolts. The top of the bracket needs to go behind the lip towards the front of the rear deck.



Step 2:

Mark the mounting holes you'll need to drill with either a punch or a marker. There are 2 mounting holes on the base of the bracket, and three across the top.

305 S. 28th street Waco, TX 76710 - TEL 254-848-4300

WWW.NITROUSOUTLET.COM

IMPORTANT- ALL APPROPRIATE SAFETY EQUIPMENT (GLOVES, TOOLS ETC.) MUST BE USED DURING THE INSTALLATION OF THIS PRODUCT(S).
NITRO DAVE'S LLC ACCEPTS NO RESPONSIBILITY FOR INJURIES RESULTING IN THE INSTALLATION OF ANY PRODUCT(S). NITROUS OXIDE IS FOR OFF-ROAD USE ONLY.



2015+ MOPAR LX

VEHICLE SPECIFIC BOTTLE BRACKET MOUNT 00-33006

INSTALLATION INSTRUCTIONS



Step 3:

Drill the holes that you marked across the top of the rear deck with a 5/16" drill bit and electric drill.



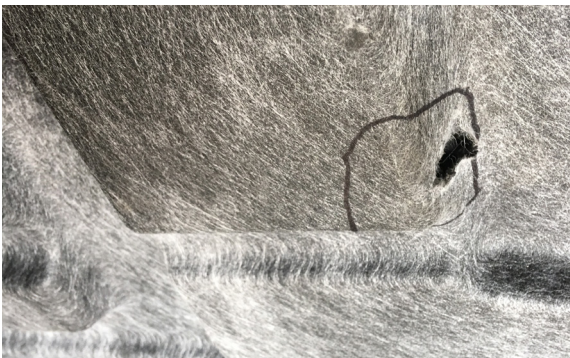
Step 4:

Remove the floor of the trunk so the mounting holes can be drilled.



Step 5:

Drill the holes where you marked the floor of the trunk with a 1/4" drill bit and electric drill. The bottom mounts of this bracket only mount to the trunk floor, and not through the metal trunk bottom.



Step 6:

Use a marker to mark the aread you will need to cut out on the backside of the trunk floor. The area needs to be large enough to allow the spacer and a wrench or socket.

305 S. 28th street Waco, TX 76710 - TEL 254-848-4300

WWW.NITROUSOUTLET.COM

IMPORTANT- ALL APPROPRIATE SAFETY EQUIPMENT (GLOVES, TOOLS ETC.) MUST BE USED DURING THE INSTALLATION OF THIS PRODUCT(S).
NITRO DAVE'S LLC ACCEPTS NO RESPONSIBILITY FOR INJURIES RESULTING IN THE INSTALLATION OF ANY PRODUCT(S). NITROUS OXIDE IS FOR OFF-ROAD USE ONLY.



2015+ MOPAR LX

VEHICLE SPECIFIC BOTTLE BRACKET MOUNT 00-33006

INSTALLATION INSTRUCTIONS



Step 7:

Use a Dremel tool to cut away the underside of the trunk flooring that you marked.



Step 8:

Mount the bracket to the trunk floor with the supplied hex bolts, washers and nuts. Tighten it down with a 1/2" wrench and 5/16" Hex Wrench. Use a washer under the bolt and on the nut. Be sure not to over-tighten the nut and crack the fiberglass flooring.



Step 9:

Do the same for the other mounting bolt. Place the bolt through the bracket and trunk floor. You will then need to place the supplied spacer on the bolt as shown in the picture. The spacer is cut at an angle so that it will mount on the ridge of the trunk floor. Install washers on both the bolt and nut, but be sure not to over-tighten the nut and crack the fiberglass flooring



Step 10:

Fold the trunk floor over with the bracket attached to it, and place it back into the trunk.

305 S. 28th street Waco, TX 76710 - TEL 254-848-4300

WWW.NITROUSOUTLET.COM

IMPORTANT- ALL APPROPRIATE SAFETY EQUIPMENT (GLOVES, TOOLS ETC.) MUST BE USED DURING THE INSTALLATION OF THIS PRODUCT(S).
NITRO DAVE'S LLC ACCEPTS NO RESPONSIBILITY FOR INJURIES RESULTING IN THE INSTALLATION OF ANY PRODUCT(S). NITROUS OXIDE IS FOR OFF-ROAD USE ONLY.



2015+ MOPAR LX

VEHICLE SPECIFIC BOTTLE BRACKET MOUNT 00-33006

INSTALLATION INSTRUCTIONS



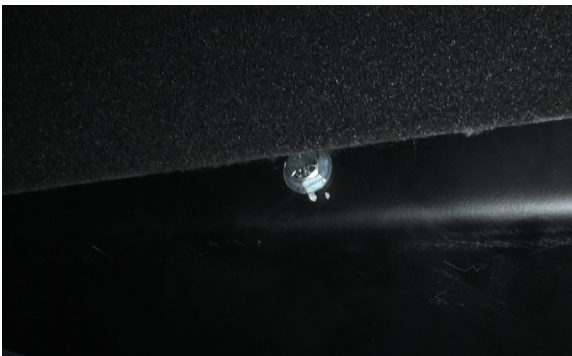
Step 11:

Make sure that the trunk floor is pushed all the way forward, and in its factory position.



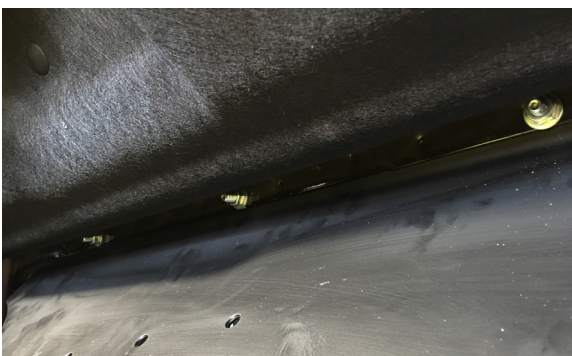
Step 12:

Check that the top of the bracket is in front of the lip on the rear deck, and that your bolt holes match for all 3 of the mounting holes.



Step 13:

Place the 3 mounting bolts that came with your bracket into the top mounting holes. In order for everything to clear, the bolts must go in from the front of the bracket.



Step 14:

Tighten the nuts onto the bolts using a 1/2" wrench. Use another 1/2" wrench to hold the head of the bolt as you tighten it. Make sure the 3 mounting bolts across the top are tight.

305 S. 28th street Waco, TX 76710 - TEL 254-848-4300

WWW.NITROUSOUTLET.COM

IMPORTANT- ALL APPROPRIATE SAFETY EQUIPMENT (GLOVES, TOOLS ETC.) MUST BE USED DURING THE INSTALLATION OF THIS PRODUCT(S).
NITRO DAVE'S LLC ACCEPTS NO RESPONSIBILITY FOR INJURIES RESULTING IN THE INSTALLATION OF ANY PRODUCT(S). NITROUS OXIDE IS FOR OFF-ROAD USE ONLY.



2015+ MOPAR LX

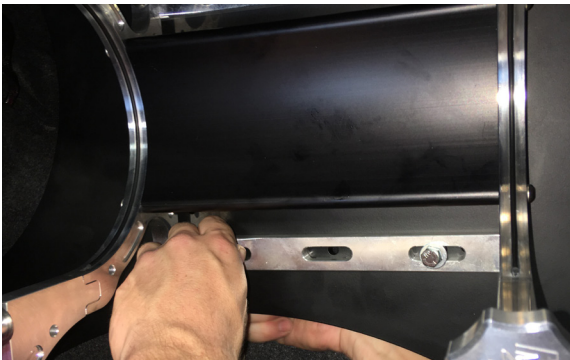
VEHICLE SPECIFIC BOTTLE BRACKET MOUNT 00-33006

INSTALLATION INSTRUCTIONS



Step 15:

Now that the bracket is properly mounted, you'll need to determine which holes you'll need to use for your bottle bracket. It is designed to accommodate the standard bracket, billet bracket, and X-Series bracket.



Step 16:

For this installation, we used the heated billet bottle bracket (P/N 00-32014-6). After placing the bracket on the mounting plate, use the mounting hardware for your bottle bracket to mount it to the bottle mounting bracket.



Step 17:

After the bottle bracket is securely mounted, you can place your bottle in the bracket.

305 S. 28th street Waco, TX 76710 - TEL 254-848-4300

WWW.NITROUSOUTLET.COM

IMPORTANT- ALL APPROPRIATE SAFETY EQUIPMENT (GLOVES, TOOLS ETC.) MUST BE USED DURING THE INSTALLATION OF THIS PRODUCT(S).
NITRO DAVE'S LLC ACCEPTS NO RESPONSIBILITY FOR INJURIES RESULTING IN THE INSTALLATION OF ANY PRODUCT(S). NITROUS OXIDE IS FOR OFF-ROAD USE ONLY.



2015+ MOPAR LX

VEHICLE SPECIFIC BOTTLE BRACKET MOUNT 00-33006

INSTALLATION INSTRUCTIONS

Bottle Mounting Information

It's very important to mount your bottle in the proper orientation. Ideally, the bottle should be facing with the valve to the front. This is because the siphon tube inside the bottle is curved towards the bottom of the bottle, so it can pick up a steady supply of nitrous. In the event your bottle cannot be mounted front to back, you can mount it at an angle, or even sideways. If you mount the bottle sideways, you'll need to rotate the bottle so that the siphon tube is at a 45° angle. This means the bottle nipple will be facing the back of the vehicle at a 45° angle. This is because upon acceleration, the nitrous can be pulled away from the siphon tube, and with it at an angle it still allows the siphon tube to be submerged in the nitrous. The siphon tube on Nitrous Outlet bottles is curved in the same direction as the bottle nipple. If the bottle is mounted front-to-back, the nipple should be facing down towards the floor of the vehicle. If you have any questions about mounting your bottle, call our Tech Help line at (254) 848-4300.



305 S. 28th street Waco, TX 76710 - TEL 254-848-4300

WWW.NITROUSOUTLET.COM

IMPORTANT- ALL APPROPRIATE SAFETY EQUIPMENT (GLOVES, TOOLS ETC.) MUST BE USED DURING THE INSTALLATION OF THIS PRODUCT(S).
NITRO DAVE'S LLC ACCEPTS NO RESPONSIBILITY FOR INJURIES RESULTING IN THE INSTALLATION OF ANY PRODUCT(S). NITROUS OXIDE IS FOR OFF-ROAD USE ONLY.



2015+ MOPAR LX

VEHICLE SPECIFIC BOTTLE BRACKET MOUNT 00-33006

INSTALLATION INSTRUCTIONS

305 S. 28th street Waco, TX 76710 - TEL 254-848-4300

WWW.NITROUSOUTLET.COM

IMPORTANT- ALL APPROPRIATE SAFETY EQUIPMENT (GLOVES, TOOLS ETC.) MUST BE USED DURING THE INSTALLATION OF THIS PRODUCT(S).
NITRO DAVE'S LLC ACCEPTS NO RESPONSIBILITY FOR INJURIES RESULTING IN THE INSTALLATION OF ANY PRODUCT(S). NITROUS OXIDE IS FOR OFF-ROAD USE ONLY.