



2020-2021 C8 Corvette Fender Well Dedicated Fuel System

PART NUMBER: 00-12036

INSTALLATION INSTRUCTIONS

This Nitrous Outlet vehicle specific dedicated fuel system is designed specifically for the 2020-2021 Chevrolet C8 Corvette with an LT2 engine. If you need any assistance during installation or if you have questions about this wiring harness, call our Tech Help Line at (254) 848-4300.

Tools Needed for Installation:

- 7mm Socket
- 10mm Deep Socket
- 19mm Socket
- 7/16" Socket
- T-15 Torx Bit
- Ratchet
- 5/32" Allen Wrench
- 7/16" Wrench
- 11/16" Wrench
- 3/4" wrench
- 3/8" Drill Bit
- 5" Hole Saw
- Drill
- Trim Tool
- Rivet Insert Tool
- Center Punch
- 5/16" Allen Wrench

Additional Materials Needed for Installation:

- Floor Jack
- Jack Puck
- Jack Stand

These are the tools required for installation of this kit on a stock vehicle. If your vehicle has aftermarket parts, other tools may be required.

Pre-Installation Tips:

- Adding a Fuel Pressure Safety Switch will prevent the nitrous system from activation in the event fuel pressure drops.
Low Pressure Part # 00-60000 High Pressure Part # 00-60001
- A Fuel Pressure Gauge is needed as a visual reference for fuel pressure.
Low Pressure Part # 00-63003 High Pressure Part # 00-63004
- A mild grade (Blue)Loctite is recommended on straight threads such as the ones on the regulator (3/8NPT).
- This fuel system is designed to work in conjunction with pump gas, E85 and most race gas. Not for use with alcohol or methanol.
- Some Fuels with a high ethanol content may cause the lid gasket to swell causing a situation to where removing the lid can be difficult.



Step 1 – Disconnect the Battery

- Open the front storage compartment.



- Remove the trim panels on each side of the vehicle by pulling them from the clips securing them to the body.



- Remove the main panel covering the battery by pulling it from the clips securing it to the body.

IMPORTANT: All appropriate safety equipment (gloves, tools etc.) must be used during the installation of this product(s). Nitro Dave's LLC accepts NO responsibility for injuries resulting in the installation of any product(s). Nitrous oxide is for off-road use only.

WWW.NITROUSOUTLET.COM/INSTALLATION-GUIDES



2020-2021 C8 Corvette Fender Well Dedicated Fuel System PART NUMBER: 00-12036

INSTALLATION INSTRUCTIONS



- Using 10mm socket, loosen the nut and remove the negative battery terminal.



Step 2: Vehicle Disassembly – LEFT REAR FENDER WELL

- Using a floor jack with a jack puck lift the left rear of the vehicle. Using a 19mm socket, remove the left rear wheel from the vehicle. Be sure to fully support the weight of the vehicle with a jack stand.



- Using a T-15 Torx, 7mm socket & trim tool, remove the mud guard and the inner fender liner.



IMPORTANT: All appropriate safety equipment (gloves, tools etc.) must be used during the installation of this product(s). Nitro Dave's LLC accepts NO responsibility for injuries resulting in the installation of any product(s). Nitrous oxide is for off-road use only.

WWW.NITROUSOUTLET.COM/INSTALLATION-GUIDES



2020-2021 C8 Corvette Fender Well Dedicated Fuel System

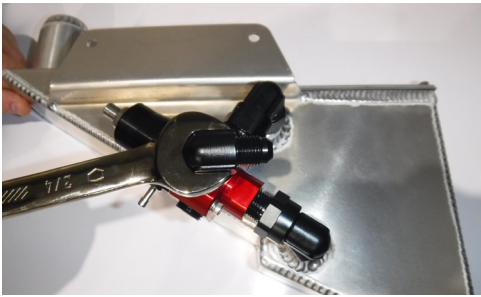
PART NUMBER: 00-12036

INSTALLATION INSTRUCTIONS



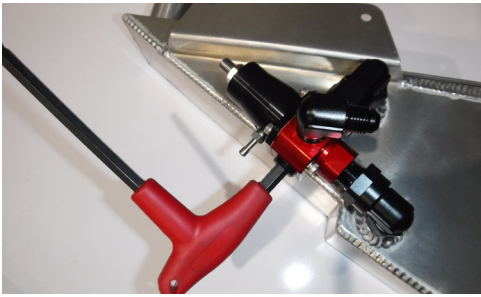
ENGINE BAY

- Open the engine compartment.

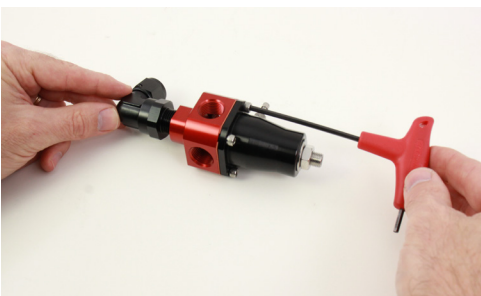


Step 3: Tank Installation

- Using a 3/4" wrench, install the 3/8" NPT x 6AN 90° fitting on the side of the fuel pressure regulator opposite the tank. Use blue Loc-tite on the fittings NPT threads.

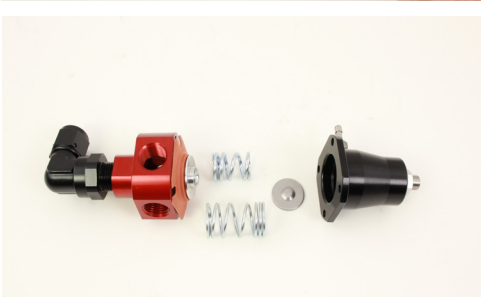


- Using a 5/16" Allen wrench, install the 3/8" NPT hex plug in the remaining port of the fuel pressure regulator. Use blue Loc-tite on the fittings NPT threads.



- This fuel system is capable of supporting high or low fuel pressure. The fuel regulator currently has the low pressure spring installed. It is designed to supply 3 - 20 psi. If your application requires high fuel pressure you will need to install the supplied high pressure spring. It is designed to supply 20 - 65 psi.

To swap the regulator spring, use a 9/64" Allen wrench to remove the 4 cover screws.



- Remove the top cover exposing the diaphragm, spring and retainer. Swap the spring and reassemble.

Note: Make sure the retainer has the nipple side to the spring.

IMPORTANT: All appropriate safety equipment (gloves, tools etc.) must be used during the installation of this product(s). Nitro Dave's LLC accepts NO responsibility for injuries resulting in the installation of any product(s). Nitrous oxide is for off-road use only.

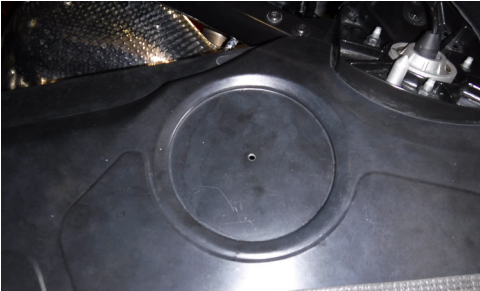
WWW.NITROUSOUTLET.COM/INSTALLATION-GUIDES



2020-2021 C8 Corvette Fender Well Dedicated Fuel System

PART NUMBER: 00-12036

INSTALLATION INSTRUCTIONS



- At the top of the passenger side fender well is a fiberglass panel. There is a circular indentation with a small hole. The small hole is not centered in this circle.



- Using a 5" hole saw without the centering drill bit, drill out the center of the circular indentation. The hole saw will center itself into the circular indentation.



- On the upper crossmember of the engine compartment just to the left of the rear strut upper mount is a hole. Drill out that hole with a 3/8" drill bit.



- Using a Rivet insert tool, install a 1/4-20 thread rivet nut into the drilled hole. For more detailed instructions on how to install Rivet Nuts, see the instructions on page 13 and 14.



- Using a 5/32" Allen wrench and button head screw with washer, install the tank on the engine bay crossmember.

IMPORTANT: All appropriate safety equipment (gloves, tools etc.) must be used during the installation of this product(s). Nitro Dave's LLC accepts NO responsibility for injuries resulting in the installation of any product(s). Nitrous oxide is for off-road use only.

WWW.NITROUSOUTLET.COM/INSTALLATION-GUIDES

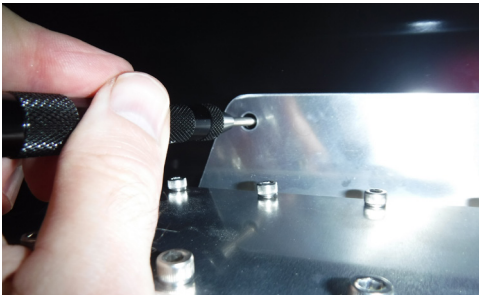


2020-2021 C8 Corvette Fender Well Dedicated Fuel System PART NUMBER: 00-12036

INSTALLATION INSTRUCTIONS



- Using a 7/16" wrench and socket, bolt the tank mounting tab to the factory hole on the vertical seam between the electrical harness mounting tabs.



- Using a center punch, mark the second mounting hole on the crossmember.



- Remove the tank.



- Drill out the mark with a 3/8" drill bit.



- Using a Rivet insert tool, install a 1/4-20 thread rivet nut into the drilled hole. For more detailed instructions on how to install Rivet Nuts, see the instructions on page 13 and 14.

IMPORTANT: All appropriate safety equipment (gloves, tools etc.) must be used during the installation of this product(s). Nitro Dave's LLC accepts NO responsibility for injuries resulting in the installation of any product(s). Nitrous oxide is for off-road use only.

WWW.NITROUSOUTLET.COM/INSTALLATION-GUIDES



2020-2021 C8 Corvette Fender Well Dedicated Fuel System PART NUMBER: 00-12036

INSTALLATION INSTRUCTIONS



- Assemble the vent hose assembly by, pushing the supplied 36" long black Vent hose onto the barbed end of the 90° Push-Loc fitting.



- Using a 11/16" wrench, connect the fuel vent hose to the 90° fitting on the access panel of the tank.



- Reinstall the tank.



- Route the fuel feed hose from the fuel pressure regulator, along the back side of the fuel tank, along the firewall, over the driver side valve cover and up to the fuel solenoid. Make sure to secure the hose away from sharp and hot objects. Mark the fuel hose, then cut it to the correct length. Connect the 90° and straight hose ends to the fuel hose. For more detailed instructions on how to install hose ends, see the instructions on page 12.



- Using an 11/16" wrench, connect the straight end of the fuel feed hose to the fuel pressure regulator.

IMPORTANT: All appropriate safety equipment (gloves, tools etc.) must be used during the installation of this product(s). Nitro Dave's LLC accepts NO responsibility for injuries resulting in the installation of any product(s). Nitrous oxide is for off-road use only.

WWW.NITROUSOUTLET.COM/INSTALLATION-GUIDES



2020-2021 C8 Corvette Fender Well Dedicated Fuel System

PART NUMBER: 00-12036

INSTALLATION INSTRUCTIONS



- Using an 11/16" wrench, connect the 90° end of the fuel feed hose to the fuel solenoid.



- Using the supplied Deutsch connector, connect the wiring for the fuel pump. (See page 11 for connector assembly instructions) Connect the wires for the dedicated fuel system to the dedicated fuel tank.

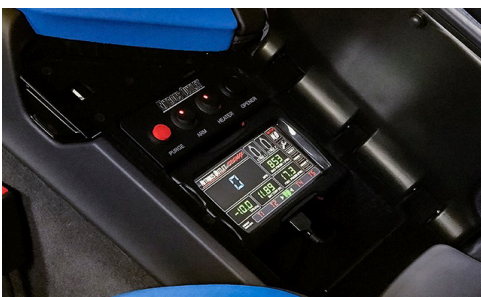


- Route the vent hose through the electrical harness, away from the exhaust and down to the bottom of the vehicle. Using a 10mm socket, connect the vent hose to the bottom rear panel with the provided clamp.



Step 4: Final Check Over

- Reconnect the battery.



- Fill the fuel tank with fuel, arm the fuel pump to verify it works and check for any leaks.

Note: Activating the fuel pump with no fuel will burn up the pump.

IMPORTANT: All appropriate safety equipment (gloves, tools etc.) must be used during the installation of this product(s). Nitro Dave's LLC accepts NO responsibility for injuries resulting in the installation of any product(s). Nitrous oxide is for off-road use only.

WWW.NITROUSOUTLET.COM/INSTALLATION-GUIDES



2020-2021 C8 Corvette Fender Well Dedicated Fuel System PART NUMBER: 00-12036

INSTALLATION INSTRUCTIONS



Step 5: Final Assembly

- Reinstall the left rear fender liner.



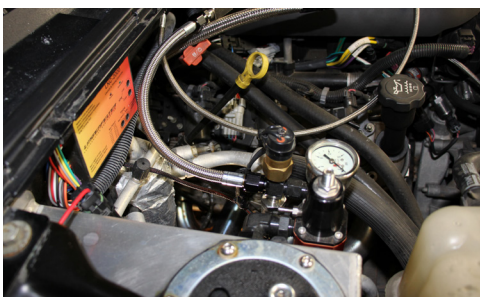
- Reinstall the left rear mud guard.



- Reinstall the left rear wheel.



- Reinstall the 3 trim panels around the front storage compartment.



Step 6 – Setting Fuel Pressure

- To set the regulated fuel pressure you will need to reference back to the nitrous systems jetting card. Pick the desired fuel pressure that matches the fuel jet you chose. The most accurate way to set the fuel systems fuel pressure is to set the flowing pressure. In order to do this you will need a flow tool kit. The flow tool kit uses a certified accurate gauge and places the flow restriction jet at the end of the fuel system feed hose.

(The Nitrous Outlet Certified Fuel Pressure Test Gauge kit is part # 00-63010.)

IMPORTANT: All appropriate safety equipment (gloves, tools etc.) must be used during the installation of this product(s). Nitro Dave's LLC accepts NO responsibility for injuries resulting in the installation of any product(s). Nitrous oxide is for off-road use only.

WWW.NITROUSOUTLET.COM/INSTALLATION-GUIDES



2020-2021 C8 Corvette Fender Well Dedicated Fuel System

PART NUMBER: 00-12036

INSTALLATION INSTRUCTIONS



- Using a 9/16" wrench, loosen the nut at the top of the fuel pressure regulator. Using a 3/16" Allen wrench, adjust the set screw to achieve the desired fuel pressure. Turn the Allen wrench to the right to increase pressure. Turn the Allen wrench to the left to decrease pressure. Once the pressure is set, use the 9/16" wrench to tighten the nut to lock the set screw in place.

Conclusion:

- You have finished your installation.

IMPORTANT: All appropriate safety equipment (gloves, tools etc.) must be used during the installation of this product(s). Nitro Dave's LLC accepts NO responsibility for injuries resulting in the installation of any product(s). Nitrous oxide is for off-road use only.

WWW.NITROUSOUTLET.COM/INSTALLATION-GUIDES

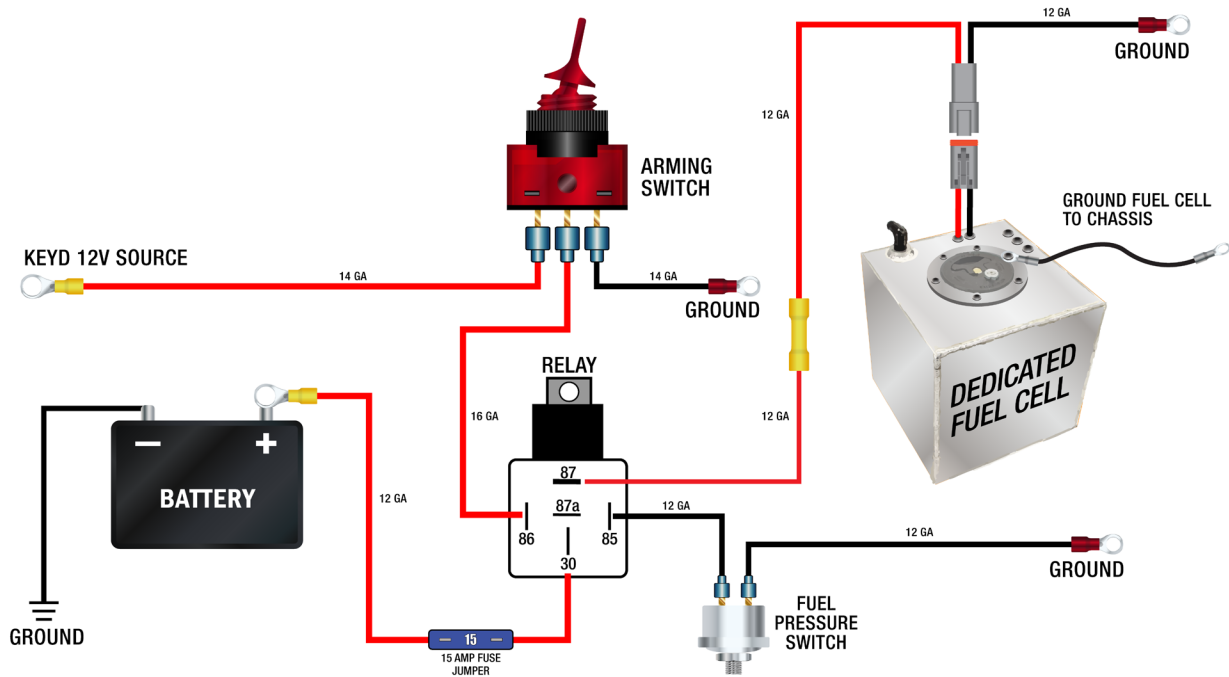


Dedicated Fuel Cell Wiring Diagram

PART NUMBER: 00-12036

INSTALLATION INSTRUCTIONS

NITROUS OUTLET — DEDICATED FUEL CELL SYSTEM WITH FUEL PRESSURE SWITCH WIRING DIAGRAM



COMPANY CONTACT: NITROUS OUTLET 08/13/2020	PROJECT: DEDICATED FUEL CELL SYSTEM W/ FUEL PRESSURE SWITCH WIRING DIAGRAM	REVISION: DEDICATED FUEL CELL SYSTEM WITH FUEL PRESSURE SWITCH WIRING DIAGRAM.A1
DATE: 08/13/2020 PAGE: 03 1	CONTACT INFORMATION: NITROUS OUTLET 305 SOUTH 28TH STREET WACO, TX 76704 254.848.4300 CUSTOMERSERVICE@NITROUSOUTLET.COM WWW.NITROUSOUTLET.COM	THIS DOCUMENT AND THE DESIGNS OR INFORMATION CONTAINED WITHIN ARE THE SOLE PROPERTY OF NITROUS OUTLET AND MAY NOT BE COPIED, REPRODUCED OR MADE AVAILABLE TO OTHERS WITHOUT PERMISSION.



IMPORTANT: All appropriate safety equipment (gloves, tools etc.) must be used during the installation of this product(s). Nitro Dave's LLC accepts NO responsibility for injuries resulting in the installation of any product(s). Nitrous oxide is for off-road use only.

WWW.NITROUSOUTLET.COM/INSTALLATION-GUIDES

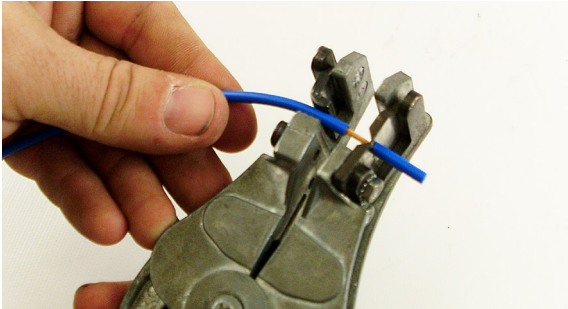


Deutsch Connector Assembly Instructions

INSTALLATION INSTRUCTIONS

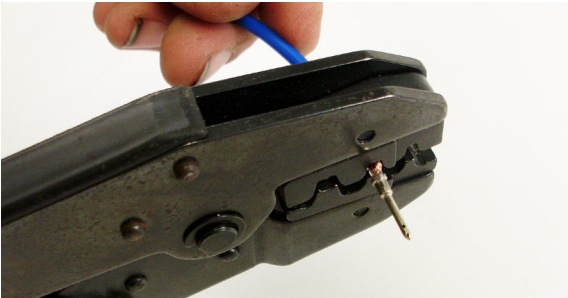
Deutsch Connector Assembly:

To assemble Deutsch terminal ends you can use a special crimper, or if done cautiously, this can be done with a pair of needle nose pliers.



Step 1:

Strip the end of the wire you want to place the connector on about 3/8".



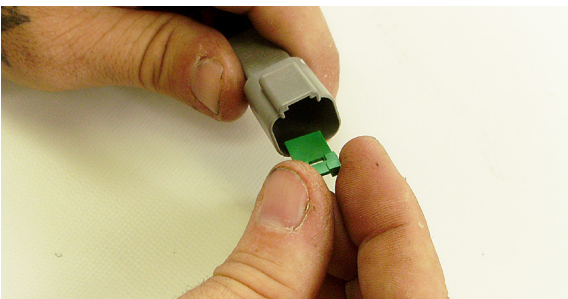
Step 2:

Using a crimp tool or needle nose pliers, crimp the connector down. First the smaller crimp and then the larger crimp, make sure the weather pack seal gets crimped with the larger side.



Step 3:

Once your sure you have a good crimp slide the pins into the connector housing being sure to match the wires correctly on each side. Push the pin in the housing until you feel a positive click and the wire cannot be pulled back out of the connector.



Step 4:

Install the provided pin retainer lock in the connector body. It simply snaps in to place.

IMPORTANT: All appropriate safety equipment (gloves, tools etc.) must be used during the installation of this product(s). Nitro Dave's LLC accepts NO responsibility for injuries resulting in the installation of any product(s). Nitrous oxide is for off-road use only.

WWW.NITROUSOUTLET.COM/INSTALLATION-GUIDES



PTFE Hose End Installation Instructions

INSTALLATION INSTRUCTIONS

Tools Needed for Installation:

- 2 - 3/4" Wrenches
- These instructions will work with straight, 45° and 90° hose ends



- Put the female side of the hose end onto the fuel hose.



- Put the inner sleeve of the fitting on the end of the hose with the tapered end over the Teflon inner liner.



- Insert the male end into the open end of the hose.



- Using two 3/4" wrenches, thread the male and female ends together.

IMPORTANT: All appropriate safety equipment (gloves, tools etc.) must be used during the installation of this product(s). Nitro Dave's LLC accepts NO responsibility for injuries resulting in the installation of any product(s). Nitrous oxide is for off-road use only.

WWW.NITROUSOUTLET.COM/INSTALLATION-GUIDES



Do-It-Yourself Riv-Nut Installation Instructions

INSTALLATION INSTRUCTIONS

This document is used for Do-It-Yourself Rivet Nut installation instructions. If you need any assistance during installation or if you have questions about this plate system, call our Tech Help Line at (254) 848-4300.

Tools Needed for Installation*:

- 1/2" Wrench
- 7/16" Wrench
- 1/4"-20 Bolt about 1 1/2" long (Does not have to be a socket head)
- 1/4"-20 Nut
- 5/16-18" Nut

*These are the tools required for installation of this kit on a stock vehicle. If your vehicle has aftermarket parts, other tools may be required.



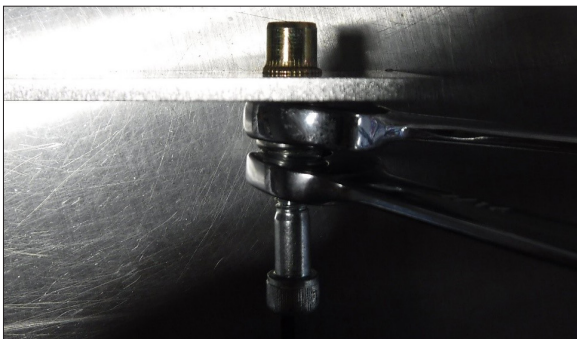
Step 1:

Thread the 1/4-20 nut all the way onto the 1/4-20 bolt. Slide the bigger nut over the 1/4-20 bolt and then thread the rivnut onto the 1/4-20 bolt.



Step 2:

Insert rivnut assembly into an 11/32" hole.



Step 3:

Use both the 7/16" and 1/2" wrench. Hold the 1/2" wrench still and tighten the 1/4-20 nut till it stops.

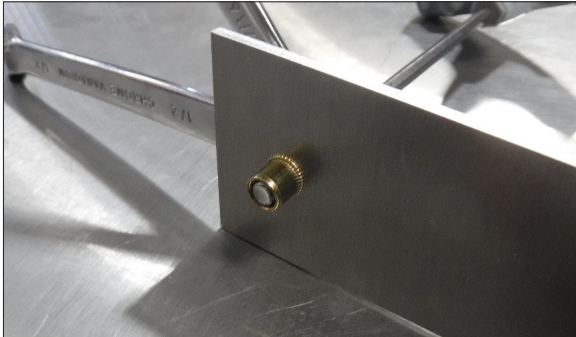
IMPORTANT: All appropriate safety equipment (gloves, tools etc.) must be used during the installation of this product(s). Nitro Dave's LLC accepts NO responsibility for injuries resulting in the installation of any product(s). Nitrous oxide is for off-road use only.

WWW.NITROUSOUTLET.COM/INSTALLATION-GUIDES



Do-It-Yourself Riv-Nut Installation Instructions

INSTALLATION INSTRUCTIONS



Step 4:

Un-thread the 1/4-20 bolt with the nuts to complete the install.



IMPORTANT: All appropriate safety equipment (gloves, tools etc.) must be used during the installation of this product(s). Nitro Dave's LLC accepts NO responsibility for injuries resulting in the installation of any product(s). Nitrous oxide is for off-road use only.

WWW.NITROUSOUTLET.COM/INSTALLATION-GUIDES