



MOPAR LX UNIVERSAL ENGINE BAY

DEDICATED FUEL SYSTEM 00-12023

INSTALLATION INSTRUCTIONS

These installation instructions will guide you through installing the Nitrous Outlet Mopar Universal LX Dedicated Fuel System on your vehicle. Before you get started, remember to never use Teflon tape or paste on NPT fittings. Loc-Tite is recommended. Compression and -AN fittings do not require any sealant. Always wear protective gear!

Tools Needed For Installation:

- Trim Tool
- 13mm Wrench
- Ratchet
- 11/16" Wrench
- 5/16" Allen Wrench
- 15mm Socket
- 3/4" Wrench x 2



Step 1:

Remove the trim tabs on the cowl using a trim tool. There are a total of six trim tabs. On the ends of the cowling there are 2 additional tabs on the rubber pieces next to the windshield.



Step 2:

Use the trim tool to remove the plastic covers on the windshield wipers base.

305 S. 28th street Waco, TX 76710 - TEL 254-848-4300

WWW.NITROUSOUTLET.COM

IMPORTANT- ALL APPROPRIATE SAFETY EQUIPMENT (GLOVES, TOOLS ETC.) MUST BE USED DURING THE INSTALLATION OF THIS PRODUCT(S).
NITRO DAVE'S LLC ACCEPTS NO RESPONSIBILITY FOR INJURIES RESULTING IN THE INSTALLATION OF ANY PRODUCT(S). NITROUS OXIDE IS FOR OFF-ROAD USE ONLY.



MOPAR LX UNIVERSAL ENGINE BAY

DEDICATED FUEL SYSTEM 00-12023

INSTALLATION INSTRUCTIONS



Step 3:

Remove the nut off of the windshield wipers with a 15mm socket and ratchet.



Step 4:

Pull the windshield wipers up off of the base. It may take some force, but be careful not to break the wiper blade.



Step 5:

Remove the plastic cowl cover. You may have to use a trim tool along the edges to get it out.



Step 6:

Locate the two 13mm bolts on the drivers side of the cowl crossmember. Remove them with a 13mm socket and ratchet.

305 S. 28th street Waco, TX 76710 - TEL 254-848-4300

WWW.NITROUSOUTLET.COM

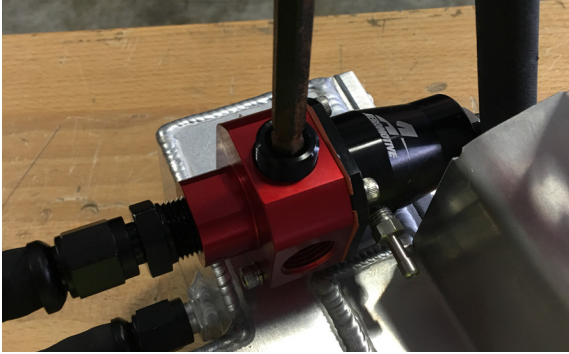
IMPORTANT- ALL APPROPRIATE SAFETY EQUIPMENT (GLOVES, TOOLS ETC.) MUST BE USED DURING THE INSTALLATION OF THIS PRODUCT(S).
NITRO DAVE'S LLC ACCEPTS NO RESPONSIBILITY FOR INJURIES RESULTING IN THE INSTALLATION OF ANY PRODUCT(S). NITROUS OXIDE IS FOR OFF-ROAD USE ONLY.



MOPAR LX UNIVERSAL ENGINE BAY

DEDICATED FUEL SYSTEM 00-12023

INSTALLATION INSTRUCTIONS



Step 7:

Open the hardware package that came with your dedicated fuel system and locate the 3/8" NPT Plugs. Put a drop of red Loc-Tite on the threads of the plug, and screw it into one of the ports on the fuel pressure regulator that you won't be using. Tighten it down with a 5/16" Allen wrench.



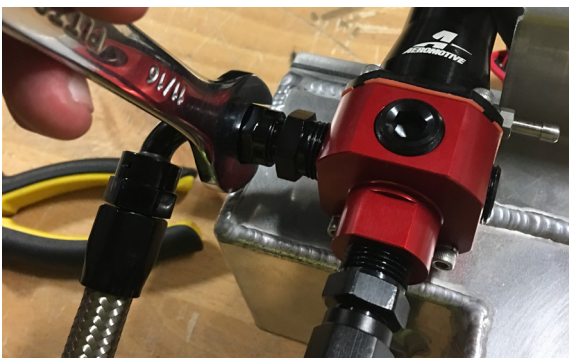
Step 8:

Now put a drop of red Loc-Tite on the threads of the 3/8" x -6AN straight fitting. Thread the fitting into one of the ports on the fuel pressure regulator, and tighten it down with a 3/4" wrench. *Note: You may need to test fit the tank before putting the fittings in to ensure clearance on your exact setup. For the Hellcat Challenger, the outlet fitting needs to be on the drivers side of the Fuel Pressure Regulator.*



Step 9:

Put the hose ends on the fuel hose. Slide the hose end onto the hose, and make sure the hose goes all the way inside of the fitting. Then, tighten the 2 halves of the fitting together with two 3/4" wrenches.



Step 10:

Tighten the hose onto the straight fitting on the fuel pressure regulator with a 11/16" wrench. Do not overtighten, it only needs to be snugged. down. The 90* end of the hose needs to attach to the fuel pressure regulator.

305 S. 28th street Waco, TX 76710 - TEL 254-848-4300

WWW.NITROUSOUTLET.COM

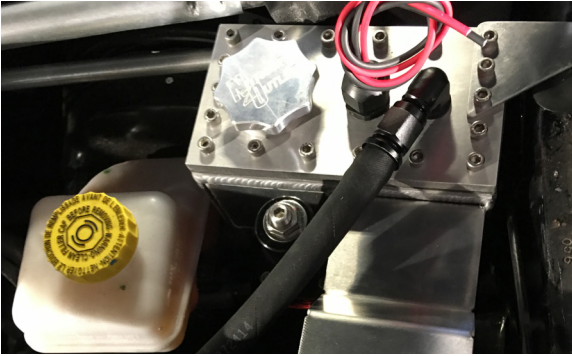
IMPORTANT- ALL APPROPRIATE SAFETY EQUIPMENT (GLOVES, TOOLS ETC.) MUST BE USED DURING THE INSTALLATION OF THIS PRODUCT(S).
NITRO DAVE'S LLC ACCEPTS NO RESPONSIBILITY FOR INJURIES RESULTING IN THE INSTALLATION OF ANY PRODUCT(S). NITROUS OXIDE IS FOR OFF-ROAD USE ONLY.



MOPAR LX UNIVERSAL ENGINE BAY

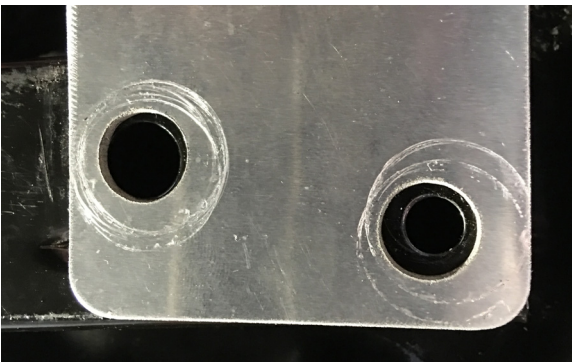
DEDICATED FUEL SYSTEM 00-12023

INSTALLATION INSTRUCTIONS



Step 11:

Lower the dedicated fuel system into place. If you need to, pull the vent hose up out of the way for ease of installation.



Step 12:

Align the the bolt holes in the dedicated fuel systems mounting bracket with the bolt holes from Step 6.



Step 13:

Replace the two bolts on the crossmember, and tighten them down with a 13mm socket.



Step 14:

Route the fuel hose from the dedicated around the back of the engine and under the cowl to the fuel solenoid on the passenger side. Tighten the hose onto the fuel solenoid with a 11/16" wrench.

305 S. 28th street Waco, TX 76710 - TEL 254-848-4300

WWW.NITROUSOUTLET.COM

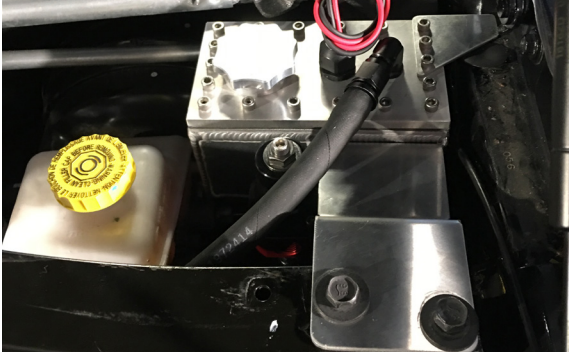
IMPORTANT- ALL APPROPRIATE SAFETY EQUIPMENT (GLOVES, TOOLS ETC.) MUST BE USED DURING THE INSTALLATION OF THIS PRODUCT(S).
NITRO DAVE'S LLC ACCEPTS NO RESPONSIBILITY FOR INJURIES RESULTING IN THE INSTALLATION OF ANY PRODUCT(S). NITROUS OXIDE IS FOR OFF-ROAD USE ONLY.



MOPAR LX UNIVERSAL ENGINE BAY

DEDICATED FUEL SYSTEM 00-12023

INSTALLATION INSTRUCTIONS



Step 15:

Use the wiring diagram attached to these instructions to wire your dedicated fuel system in. Relay mounting points can vary depending on the vehicle, so find an accessibly place to mount your relay and route your wiring.



Step 16:

Replace the cowl, and re-install the trim tabs.



Step 17:

Re-install the windshield wipers, and be sure they are properly aligned using the white marks on the windshield. Once they are aligned, tighten them down with a 15mm socket and ratchet, and replace the caps on the nuts.



Step 18:

After the cowl and windshield wipers are installed, put the cover on over the dedicated fuel system and you are complete!

305 S. 28th street Waco, TX 76710 - TEL 254-848-4300

WWW.NITROUSOUTLET.COM

IMPORTANT- ALL APPROPRIATE SAFETY EQUIPMENT (GLOVES, TOOLS ETC.) MUST BE USED DURING THE INSTALLATION OF THIS PRODUCT(S).
NITRO DAVE'S LLC ACCEPTS NO RESPONSIBILITY FOR INJURIES RESULTING IN THE INSTALLATION OF ANY PRODUCT(S). NITROUS OXIDE IS FOR OFF-ROAD USE ONLY.

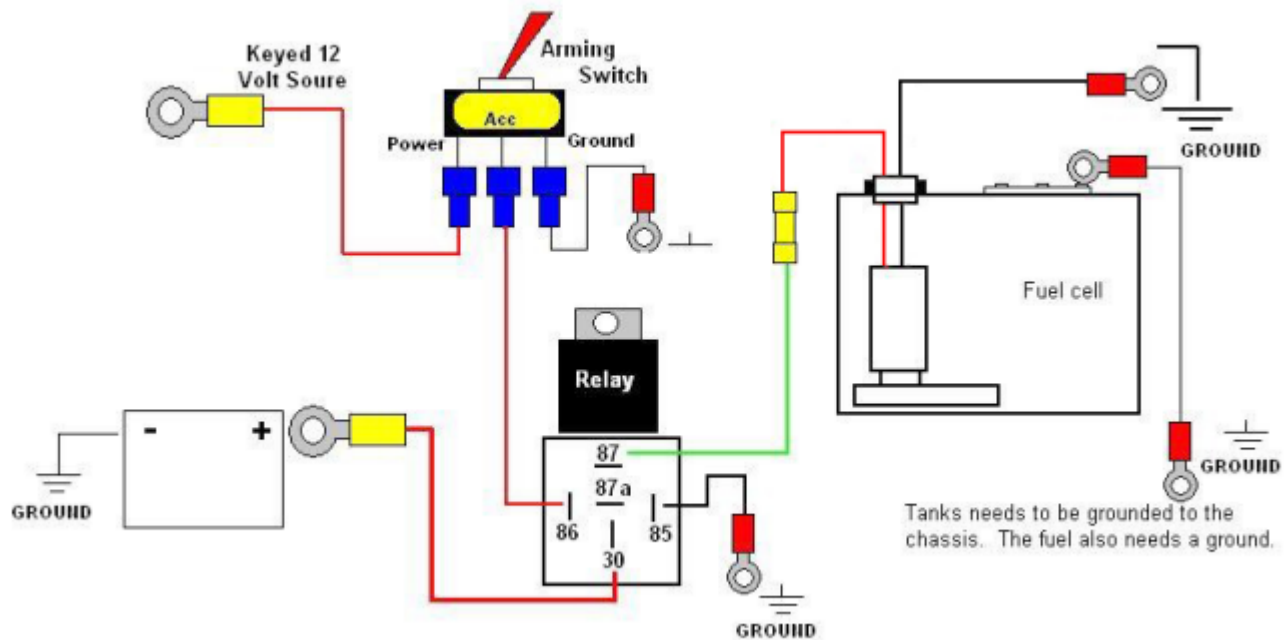


MOPAR LX UNIVERSAL ENGINE BAY

DEDICATED FUEL SYSTEM 00-12023

INSTALLATION INSTRUCTIONS

Dedicated Fuel System Wiring Diagram



305 S. 28th street Waco, TX 76710 - TEL 254-848-4300

WWW.NITROUSOUTLET.COM

IMPORTANT- ALL APPROPRIATE SAFETY EQUIPMENT (GLOVES, TOOLS ETC.) MUST BE USED DURING THE INSTALLATION OF THIS PRODUCT(S).
NITRO DAVE'S LLC ACCEPTS NO RESPONSIBILITY FOR INJURIES RESULTING IN THE INSTALLATION OF ANY PRODUCT(S). NITROUS OXIDE IS FOR OFF-ROAD USE ONLY.