



2015-20 Ford Mustang Dedicated Fuel System

PART NUMBER 00-12018

INSTALLATION INSTRUCTIONS

This Nitrous Outlet Vehicle Specific Dedicated Fuel System is designed specifically for the 2019 Ford Mustang. If you need any assistance during installation or if you have questions about this plate system, call our Tech Help Line at (254) 848-4300.

Tools Needed for Installation*:

- 8mm Socket
- 1/2" Deep Socket
- Ratchet
- 6" Extension
- 3/4" Wrench – Qty. 2
- 5/16" Allen Wrench
- 8mm Wrench
- 9/64" Allen Wrench
- 11/16" Wrench
- 3/8" Drill Bit
- 7/8" Hole Saw
- Large Hose Cutters
- Razorblade
- Drill
- Center Punch
- Marker

***These are the tools required for installation of this kit on a stock vehicle. If your vehicle has aftermarket parts, other tools may be required.**



Step 1:
Open the trunk and remove the floor panel.



Step 2:
Remove the spare tire from the vehicle. If your vehicle is equipped with the tire pump, take it out, turn it 180°, and install it back in the vehicle.

IMPORTANT- ALL APPROPRIATE SAFETY EQUIPMENT (GLOVES, TOOLS ETC.) MUST BE USED DURING THE INSTALLATION OF THIS PRODUCT(S). NITRO DAVE'S LLC ACCEPTS NO RESPONSIBILITY FOR INJURIES RESULTING IN THE INSTALLATION OF ANY PRODUCT(S). NITROUS OXIDE IS FOR OFF-ROAD USE ONLY.

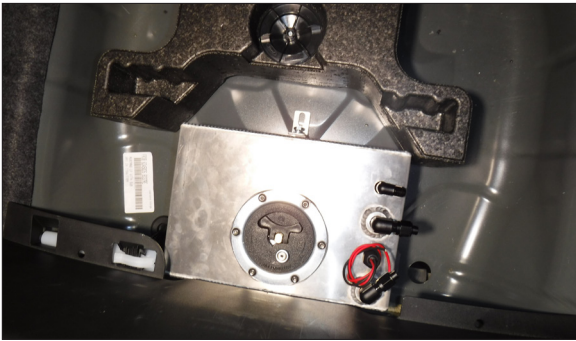
WWW.NITROUSOUTLET.COM/INSTALLATION-GUIDES.COM



2015-20 Ford Mustang Dedicated Fuel System

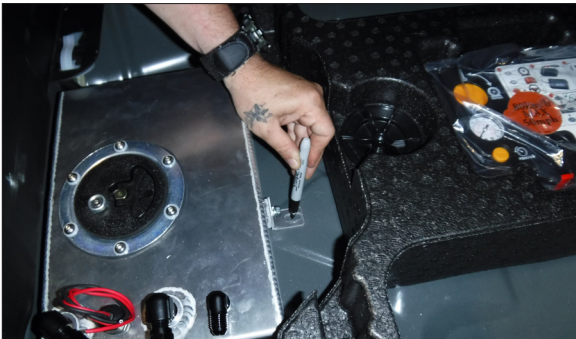
PART NUMBER 00-12018

INSTALLATION INSTRUCTIONS



Step 3:

Place the tank centered in the rear of the trunk in between the two rubber grommets with the center tab on the raised portion of the wheel well.



Step 4:

Mark the 3 mounting holes with a marker. Remove the tank.



Step 5:

Check under the area you are drilling to ensure it is clear of any electrical or fuel systems components. If it is clear, use a center punch to mark the center of your mark, then a 3/8" drill bit to drill the holes you marked.



IMPORTANT- ALL APPROPRIATE SAFETY EQUIPMENT (GLOVES, TOOLS ETC.) MUST BE USED DURING THE INSTALLATION OF THIS PRODUCT(S). NITRO DAVE'S LLC ACCEPTS NO RESPONSIBILITY FOR INJURIES RESULTING IN THE INSTALLATION OF ANY PRODUCT(S). NITROUS OXIDE IS FOR OFF-ROAD USE ONLY.

WWW.NITROUSOUTLET.COM/INSTALLATION-GUIDES.COM



2015-20 Ford Mustang Dedicated Fuel System

PART NUMBER 00-12018

INSTALLATION INSTRUCTIONS



Step 6:

Install Rivet Nuts in the holes. (See attached notes for information regarding Rivet Nut installation)



Step 7:

Using a 1/2" deep socket and extension, install the tank with the provided hardware.



Step 8:

Remove the passenger side rubber plug in the trunk. Using a razorblade, cut slits in the center of the plug. Reinstall the plug in the car.



Step 9:

Using large hose cutters, cut two 14'-6" lengths of the supplied hose. Starting in the trunk run the two hoses through the plug from Step 8.

IMPORTANT- ALL APPROPRIATE SAFETY EQUIPMENT (GLOVES, TOOLS ETC.) MUST BE USED DURING THE INSTALLATION OF THIS PRODUCT(S). NITRO DAVE'S LLC ACCEPTS NO RESPONSIBILITY FOR INJURIES RESULTING IN THE INSTALLATION OF ANY PRODUCT(S). NITROUS OXIDE IS FOR OFF-ROAD USE ONLY.

WWW.NITROUSOUTLET.COM/INSTALLATION-GUIDES.COM



2015-20 Ford Mustang Dedicated Fuel System

PART NUMBER 00-12018

INSTALLATION INSTRUCTIONS



Step 10:

Route the hoses forward along the spare tire well, up over the rear suspension cradle, down toward the passenger side rocker panel.



Step 11:

Continue routing the hoses along the frame rail, up the passenger side wheel well behind the black body brace. You will need to secure the hose to the frame rail with a 3/4" P-clamp. (not provided)

IMPORTANT- ALL APPROPRIATE SAFETY EQUIPMENT (GLOVES, TOOLS ETC.) MUST BE USED DURING THE INSTALLATION OF THIS PRODUCT(S). NITRO DAVE'S LLC ACCEPTS NO RESPONSIBILITY FOR INJURIES RESULTING IN THE INSTALLATION OF ANY PRODUCT(S). NITROUS OXIDE IS FOR OFF-ROAD USE ONLY.

WWW.NITROUSOUTLET.COM/INSTALLATION-GUIDES.COM

NITROUS OUTLET | 305 SOUTH 28TH STREET | WACO, TX 76710 | P: 254-848-4300 | WWW.NITROUSOUTLET.COM



2015-20 Ford Mustang Dedicated Fuel System

PART NUMBER 00-12018

INSTALLATION INSTRUCTIONS



Step 12:

Pull the hoses in to the engine compartment along the battery box, along the top of the cylinder head, to the passenger side strut tower.

Step 13:

Put the female side of the hose end onto the fuel hose. Put the inner sleeve of the fitting on the end of the hose with the tapered end over the Teflon inner liner.

IMPORTANT- ALL APPROPRIATE SAFETY EQUIPMENT (GLOVES, TOOLS ETC.) MUST BE USED DURING THE INSTALLATION OF THIS PRODUCT(S). NITRO DAVE'S LLC ACCEPTS NO RESPONSIBILITY FOR INJURIES RESULTING IN THE INSTALLATION OF ANY PRODUCT(S). NITROUS OXIDE IS FOR OFF-ROAD USE ONLY.

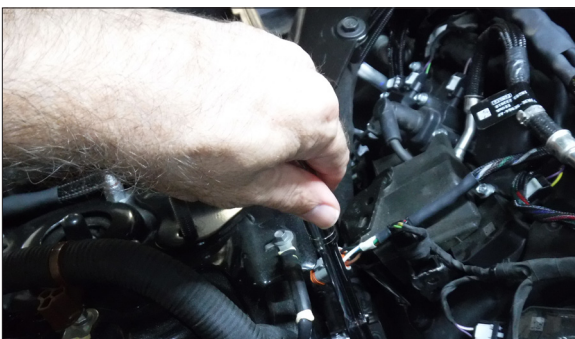
WWW.NITROUSOUTLET.COM/INSTALLATION-GUIDES.COM

NITROUS OUTLET | 305 SOUTH 28TH STREET | WACO, TX 76710 | P: 254-848-4300 | WWW.NITROUSOUTLET.COM



2015-20 Ford Mustang Dedicated Fuel System PART NUMBER 00-12018

INSTALLATION INSTRUCTIONS



Step 14:

Insert the male end into the open end of the hose. Using two 3/4" wrenches, thread the male and female ends together. The return hose will need a 90° fitting on each end. The supply hose will need a 90° fitting in the trunk and a straight fitting in the engine compartment.

Step 15:

Using an 8mm socket, unbolt the wiring harness bracket on the passenger side strut tower.

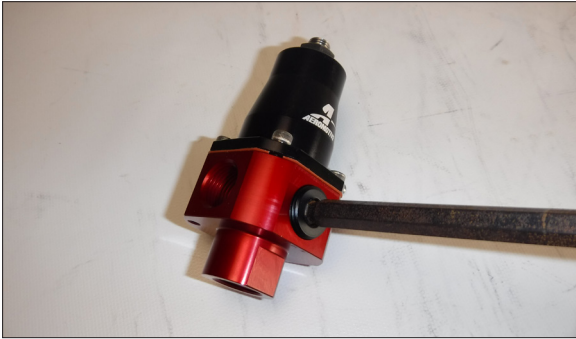
IMPORTANT- ALL APPROPRIATE SAFETY EQUIPMENT (GLOVES, TOOLS ETC.) MUST BE USED DURING THE INSTALLATION OF THIS PRODUCT(S). NITRO DAVE'S LLC ACCEPTS NO RESPONSIBILITY FOR INJURIES RESULTING IN THE INSTALLATION OF ANY PRODUCT(S). NITROUS OXIDE IS FOR OFF-ROAD USE ONLY.

WWW.NITROUSOUTLET.COM/INSTALLATION-GUIDES.COM



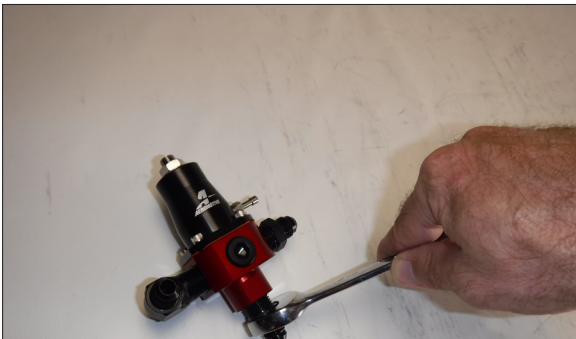
2015-20 Ford Mustang Dedicated Fuel System PART NUMBER 00-12018

INSTALLATION INSTRUCTIONS



Step 16:

Using a 5/16" Allen wrench, insert the 2 plugs in the fuel pressure regulator as shown and on the opposite side from shown. Using a 3/4" wrench, attach the 90° and 2 straight fittings to the fuel pressure regulator as shown.



Step 17:

Using a 9/64" Allen wrench, attach the Nitrous Outlet supplied fuel regulator bracket to the regulator.



Step 18:

Using an 11/16" wrench, attach hoses. Blow air through the hose with the straight fitting and connect the other end to the rear most fitting on the tank. Connect the other hose to the bottom of the regulator and the center fitting on the tank.

IMPORTANT- ALL APPROPRIATE SAFETY EQUIPMENT (GLOVES, TOOLS ETC.) MUST BE USED DURING THE INSTALLATION OF THIS PRODUCT(S). NITRO DAVE'S LLC ACCEPTS NO RESPONSIBILITY FOR INJURIES RESULTING IN THE INSTALLATION OF ANY PRODUCT(S). NITROUS OXIDE IS FOR OFF-ROAD USE ONLY.

WWW.NITROUSOUTLET.COM/INSTALLATION-GUIDES.COM



2015-20 Ford Mustang Dedicated Fuel System

PART NUMBER 00-12018

INSTALLATION INSTRUCTIONS



Step 19:

Using an 8mm wrench, install the fuel pressure regulator using the bolt from Step 15.



Step 20:

Using large hose cutters, a 1'-6" length of the supplied hose. Attach one straight fitting and one 90° fitting to the hose using the procedures from Steps 13 and 14.



IMPORTANT- ALL APPROPRIATE SAFETY EQUIPMENT (GLOVES, TOOLS ETC.) MUST BE USED DURING THE INSTALLATION OF THIS PRODUCT(S). NITRO DAVE'S LLC ACCEPTS NO RESPONSIBILITY FOR INJURIES RESULTING IN THE INSTALLATION OF ANY PRODUCT(S). NITROUS OXIDE IS FOR OFF-ROAD USE ONLY.

WWW.NITROUSOUTLET.COM/INSTALLATION-GUIDES.COM



2015-20 Ford Mustang Dedicated Fuel System

PART NUMBER 00-12018

INSTALLATION INSTRUCTIONS



Step 21:

Using an 11/16" wrench, connect the 90° hose end to the 90° fitting on the regulator and the straight hose end to the fuel solenoid.



Step 22:

Check under the area you are drilling to ensure it is clear of any electrical or fuel systems components. If it is clear, use a 7/8" hole saw to drill a hole 2" forward of the supply hoses.



Step 23:

Connect vent hose to the forward most fitting on the tank. Run the hose through the 7/8" hole with the supplied grommet.



Step 24:

Connect the wiring to fuel pump.

IMPORTANT- ALL APPROPRIATE SAFETY EQUIPMENT (GLOVES, TOOLS ETC.) MUST BE USED DURING THE INSTALLATION OF THIS PRODUCT(S). NITRO DAVE'S LLC ACCEPTS NO RESPONSIBILITY FOR INJURIES RESULTING IN THE INSTALLATION OF ANY PRODUCT(S). NITROUS OXIDE IS FOR OFF-ROAD USE ONLY.

WWW.NITROUSOUTLET.COM/INSTALLATION-GUIDES.COM



Do-It-Yourself Riv-Nut Installation Instructions

INSTALLATION INSTRUCTIONS

This document is used for Do-It-Yourself Riv-Nut installation instructions. If you need any assistance during installation or if you have questions about this plate system, call our Tech Help Line at (254) 848-4300.

Tools Needed for Installation*:

- 1/2" Wrench
- 7/16" Wrench
- 1/4"-20 Bolt about 1 1/2" long (Does not have to be a socket head)
- 1/4"-20 Nut
- 5/16-18" Nut

***These are the tools required for installation of this kit on a stock vehicle. If your vehicle has aftermarket parts, other tools may be required.**



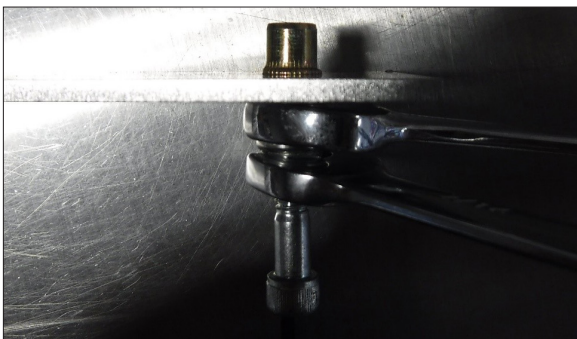
Step 1:

Thread the 1/4-20 nut all the way onto the 1/4-20 bolt. Slide the bigger nut over the 1/4-20 bolt and then thread the rivnut onto the 1/4-20 bolt.



Step 2:

Insert rivnut assembly into an 1 1/32" hole



Step 3:

Use both the 7/16" and 1/2" wrench. Hold the 1/2" wrench still and tighten the 1/4-20 nut till it stops.

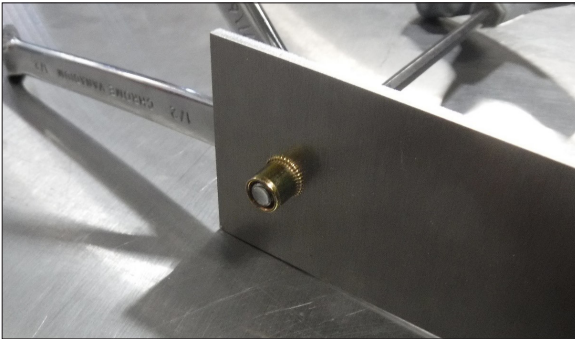
IMPORTANT- ALL APPROPRIATE SAFETY EQUIPMENT (GLOVES, TOOLS ETC.) MUST BE USED DURING THE INSTALLATION OF THIS PRODUCT(S). NITRO DAVE'S LLC ACCEPTS NO RESPONSIBILITY FOR INJURIES RESULTING IN THE INSTALLATION OF ANY PRODUCT(S). NITROUS OXIDE IS FOR OFF-ROAD USE ONLY.

WWW.NITROUSOUTLET.COM/INSTALLATION-GUIDES.COM



Do-It-Yourself Riv-Nut Installation Instructions

INSTALLATION INSTRUCTIONS



Step 4:

Un-thread the 1/4-20 bolt with the nuts to complete the install.



IMPORTANT- ALL APPROPRIATE SAFETY EQUIPMENT (GLOVES, TOOLS ETC.) MUST BE USED DURING THE INSTALLATION OF THIS PRODUCT(S). NITRO DAVE'S LLC ACCEPTS NO RESPONSIBILITY FOR INJURIES RESULTING IN THE INSTALLATION OF ANY PRODUCT(S). NITROUS OXIDE IS FOR OFF-ROAD USE ONLY.

WWW.NITROUSOUTLET.COM/INSTALLATION-GUIDES.COM

NITROUS OUTLET | 305 SOUTH 28TH STREET | WACO, TX 76710 | P: 254-848-4300 | WWW.NITROUSOUTLET.COM