



2016-2021 6th Gen Camaro Cupholder Switch Panel

PART NUMBER 00-11042

INSTALLATION INSTRUCTIONS

This Nitrous Outlet Vehicle Specific Switch Panel is designed specifically for the 2016-2021 Chevrolet Camaro. If you need any assistance during installation or if you have questions about this switch panel, call our Tech Help Line at (254) 848-4300.

Tools Needed for Installation*:

- 10mm Deep Socket
- T25 Torx Bit
- Ratchet
- Body Tool
- Drill
- 1/2" Hole Saw
- 0.090 Drill Bit

*These are the tools required for installation of this kit on a stock vehicle. If your vehicle has aftermarket parts, other tools may be required.



Step 1:

Using the body tool, pry the shifter boot away from the console and pull the boot toward the shift knob.



Step 2a:

Manual Transmission – Using a T25 Torx bit, remove the set screw holding the shift knob. Pull the shift knob and shifter boot straight up and off the shift lever.



Step 2b:

Automatic Transmission – Using the body tool, release the clip holding the shift knob. Pull the shift knob and shifter boot straight up and off the shift lever.

IMPORTANT: All appropriate safety equipment (gloves, tools etc.) must be used during the installation of this product(s). Nitro Dave's LLC accepts NO responsibility for injuries resulting in the installation of any product(s). Nitrous oxide is for off-road use only.

WWW.NITROUSOUTLET.COM/INSTALLATION-GUIDES



2016-2021 6th Gen Camaro Cupholder Switch Panel PART NUMBER 00-11042

INSTALLATION INSTRUCTIONS



Step 3:

Using the body tool, remove the circular tab covering the rear mounting bolts on each side of the console.



Step 4:

Using a 10mm socket, remove the mounting bolt on each side.



Step 5:

Remove the side bolsters on each side of the console by lifting straight up.



Step 6:

Using a 10mm socket, remove the two mounting bolts on each side.

IMPORTANT: All appropriate safety equipment (gloves, tools etc.) must be used during the installation of this product(s). Nitro Dave's LLC accepts NO responsibility for injuries resulting in the installation of any product(s). Nitrous oxide is for off-road use only.

WWW.NITROUSOUTLET.COM/INSTALLATION-GUIDES



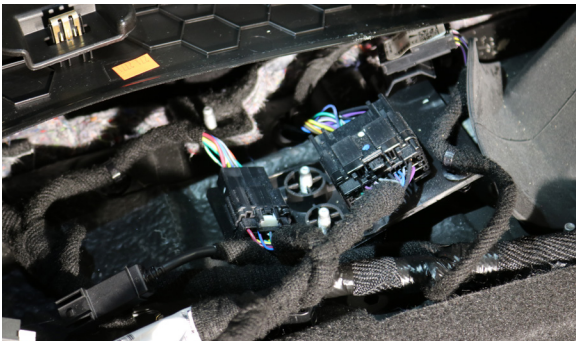
2016-2021 6th Gen Camaro Cupholder Switch Panel PART NUMBER 00-11042

INSTALLATION INSTRUCTIONS



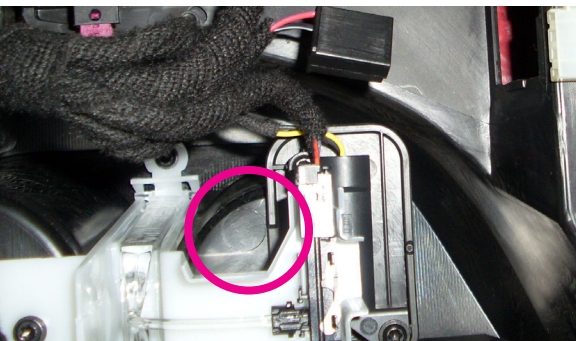
Step 7:

Slide the console back, lift, and rotate to disconnect the three electrical connections underneath.



Step 8:

Remove the console from the vehicle and place the console, top down, on a level surface.



Step 9:

Using a 1/2" hole saw, drill a hole on the driver side of the rear cup holder.

IMPORTANT: All appropriate safety equipment (gloves, tools etc.) must be used during the installation of this product(s). Nitro Dave's LLC accepts NO responsibility for injuries resulting in the installation of any product(s). Nitrous oxide is for off-road use only.

WWW.NITROUSOUTLET.COM/INSTALLATION-GUIDES



2016-2021 6th Gen Camaro Cupholder Switch Panel PART NUMBER 00-11042

INSTALLATION INSTRUCTIONS



Step 10:

Turn the console right side up and place the switch panel in the rear cupholder. Make sure that the switch panel is in the correct and final position, then press the points of the panel against the inside of the cupholder. This will mark where you will need to drill 3 - 0.090 holes. Drill these 3 points with a .090 drill bit, or slightly smaller. The points need to be a snug fit, making the holes any larger will not allow this panel to sit properly. Test fit your panel to confirm your hole location.



Step 11:

Place the console back in the vehicle and reconnect the three stock electrical connections from Step 7.



Step 12:

Remove the switch panel from the console. Pull your wires through the hole in the center console and wire the switch panel using the diagram provided. Reinstall the switch panel for the final fitment.

IMPORTANT: All appropriate safety equipment (gloves, tools etc.) must be used during the installation of this product(s). Nitro Dave's LLC accepts NO responsibility for injuries resulting in the installation of any product(s). Nitrous oxide is for off-road use only.

WWW.NITROUSOUTLET.COM/INSTALLATION-GUIDES



2016-2021 6th Gen Camaro Cupholder Switch Panel

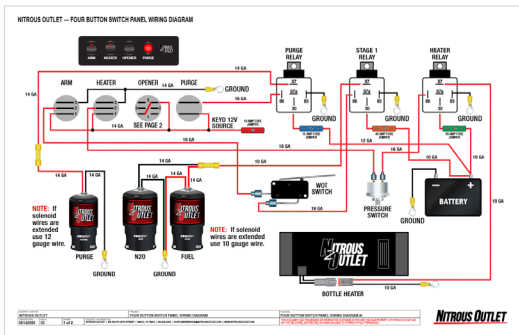
PART NUMBER 00-11042

INSTALLATION INSTRUCTIONS



Step 13:

Reinstall the switch panel for the final fitment.



Step 14 – Wiring

• This step will cross over into the installation of other components you are installing in conjunction with the switch panel, such as nitrous controller, bottle heater, purge etc. Using the diagrams that came with those components route the wiring.

****Note:** The diagram to the left is a basic system diagram with a WOT Switch. To view a larger diagram, turn to the last page of these instructions, however you should be using a nitrous controller that incorporates a window safety switch with TPS activation.



Step 15:

Using a 10mm socket, reinstall the four bolts at the front of the console.



Step 16:

Reinstall the side bolsters by sliding them down in to place.

IMPORTANT: All appropriate safety equipment (gloves, tools etc.) must be used during the installation of this product(s). Nitro Dave's LLC accepts NO responsibility for injuries resulting in the installation of any product(s). Nitrous oxide is for off-road use only.

WWW.NITROUSOUTLET.COM/INSTALLATION-GUIDES



2016-2021 6th Gen Camaro Cupholder Switch Panel PART NUMBER 00-11042

INSTALLATION INSTRUCTIONS



Step 17:

Using a 10mm socket, reinstall the two bolts at the rear of the console.



Step 18:

Reinstall the circular tabs covering the rear mounting bolts.



Conclusion

- You have finished your installation.

IMPORTANT: All appropriate safety equipment (gloves, tools etc.) must be used during the installation of this product(s). Nitro Dave's LLC accepts NO responsibility for injuries resulting in the installation of any product(s). Nitrous oxide is for off-road use only.

WWW.NITROUSOUTLET.COM/INSTALLATION-GUIDES

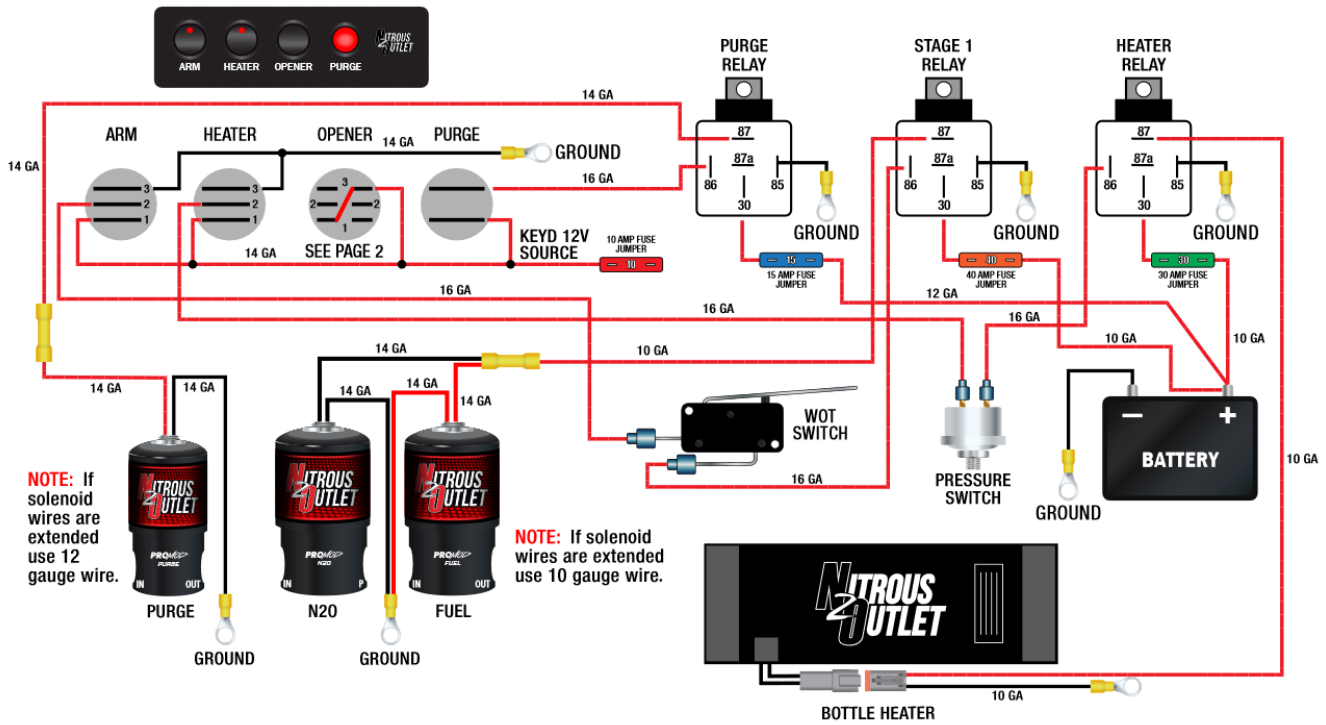


2016-2021 6th Gen Camaro Cupholder Switch Panel

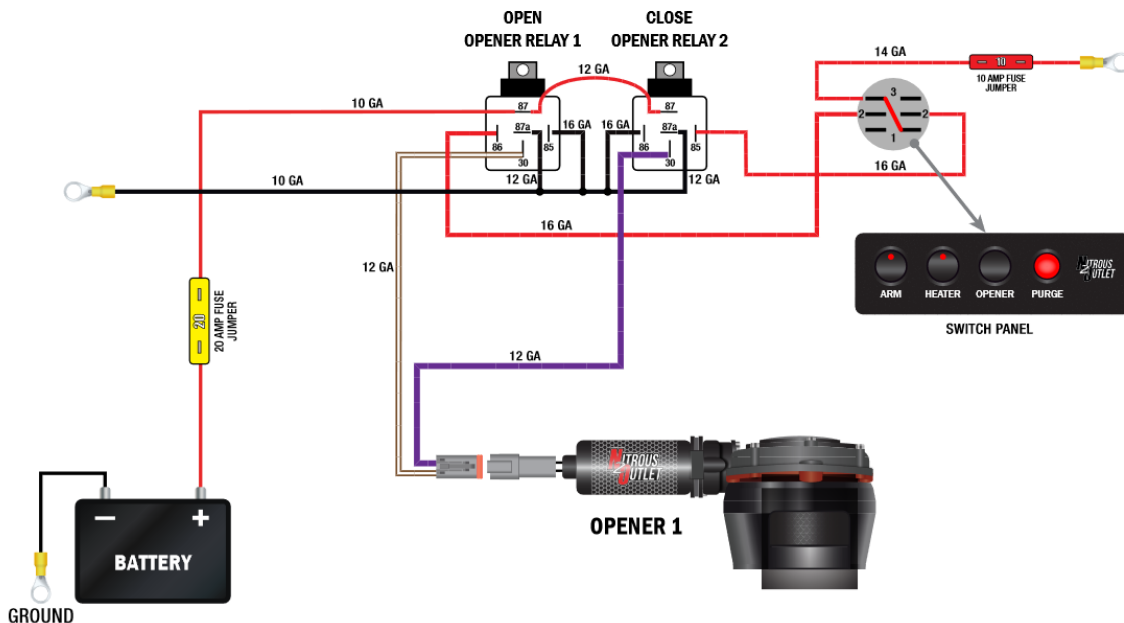
PART NUMBER 00-11042

INSTALLATION INSTRUCTIONS

NITROUS OUTLET — FOUR BUTTON SWITCH PANEL WIRING DIAGRAM



COMPANY CONTACT NITROUS OUTLET	PROJECT FOUR BUTTON SWITCH PANEL WIRING DIAGRAM	FILENAME FOUR BUTTON SWITCH PANEL WIRING DIAGRAM.AI
DATE: 08/14/2020	REV: 03	CONTROL INFORMATION NITROUS OUTLET 305 SOUTH 28TH STREET WACO, TX 76704 254.848.4300 CUSTOMERSERVICE@NITROUSOUTLET.COM WWW.NITROUSOUTLET.COM
PROJ: 1 of 2	THIS DOCUMENT AND THE DESIGN OR INFORMATION CONTAINED WITHIN ARE THE SOLE PROPERTY OF NITROUS OUTLET AND MAY NOT BE COPIED, DISTRIBUTED OR MADE AVAILABLE TO OTHERS WITHOUT PERMISSION.	



WWW.NITROUSOUTLET.COM/INSTALLATION-GUIDES