



2014-2019 C7 Corvette Power Outlet Fold-Up Switch Panel

PART NUMBER 00-11036

INSTALLATION INSTRUCTIONS

These installation instructions will guide you through the steps necessary to install this switch panel in your 2014-2019 Chevrolet Corvette. This switch panel is designed to mount in the factory power outlet in the center console.

Tools Needed for Installation*:

- T-15 Torx Bit
- T-20 Torx Bit
- Trim Tool
- Small Rotary Cutting Tool

***These are the tools required for installation of this kit on a stock vehicle. If your vehicle has aftermarket parts, other tools may be required.**



Step 1:

Using the trim tool, remove the plastic and leather trim from the console and under the dash on the drivers side.



Step 2:

Using a T-15 Torx bit remove the 3 bolts that secure the center console lid.



Step 3:

Put your ignition in accessory mode, and place the shifter in the neutral position.

IMPORTANT: All appropriate safety equipment (gloves, tools etc.) must be used during the installation of this product(s). Nitro Dave's LLC accepts NO responsibility for injuries resulting in the installation of any product(s). Nitrous oxide is for off-road use only.

WWW.NITROUSOUTLET.COM/INSTALLATION-GUIDES



2014-2019 C7 Corvette Power Outlet Fold-Up Switch Panel

PART NUMBER 00-11036

INSTALLATION INSTRUCTIONS



Step 4:

Using the trim tool, pop the center console up.



Step 5:

Once the console is loose, disconnect the 4 wiring connectors inside it.



Step 6:

After disconnecting the wiring, firmly grip the shifter and pull up with slight force. The center console should then come loose, allowing it to be removed from the vehicle. Place the vehicle back in park and turn the ignition off.

IMPORTANT: All appropriate safety equipment (gloves, tools etc.) must be used during the installation of this product(s). Nitro Dave's LLC accepts NO responsibility for injuries resulting in the installation of any product(s). Nitrous oxide is for off-road use only.

WWW.NITROUSOUTLET.COM/INSTALLATION-GUIDES



2014-2019 C7 Corvette Power Outlet Fold-Up Switch Panel

PART NUMBER 00-11036

INSTALLATION INSTRUCTIONS



Step 7:

Take the console to a clean work area. On the bottom of the console, you will need to remove the four T-20 bolts that secure the 12V Power Assembly.



Step 8:

Once the power assembly is removed from the console, use the two clips on the rear of the power socket to remove it from the power assembly.



IMPORTANT: All appropriate safety equipment (gloves, tools etc.) must be used during the installation of this product(s). Nitro Dave's LLC accepts NO responsibility for injuries resulting in the installation of any product(s). Nitrous oxide is for off-road use only.

WWW.NITROUSOUTLET.COM/INSTALLATION-GUIDES



2014-2019 C7 Corvette Power Outlet Fold-Up Switch Panel

PART NUMBER 00-11036

INSTALLATION INSTRUCTIONS



Step 9:

The power assembly will need to be trimmed to clear the switches on the back of the switch panel. Using a small rotary cutting tool, cut a 1.25x1.25 inch square, centered on the circle left from the removal of the power socket.

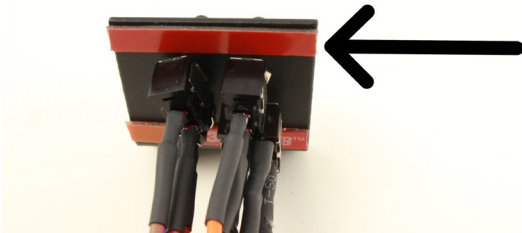


Step 10:

Route the wiring on the back of the switch panel through the new opening in the power assembly.

Step 11:

Peel the backing off the double sided tape.



Step 12:

Press the switch panel into place so that the double sided tape seals to the power assembly.



IMPORTANT: All appropriate safety equipment (gloves, tools etc.) must be used during the installation of this product(s). Nitro Dave's LLC accepts NO responsibility for injuries resulting in the installation of any product(s). Nitrous oxide is for off-road use only.

WWW.NITROUSOUTLET.COM/INSTALLATION-GUIDES



2014-2019 C7 Corvette Power Outlet Fold-Up Switch Panel

PART NUMBER 00-11036

INSTALLATION INSTRUCTIONS



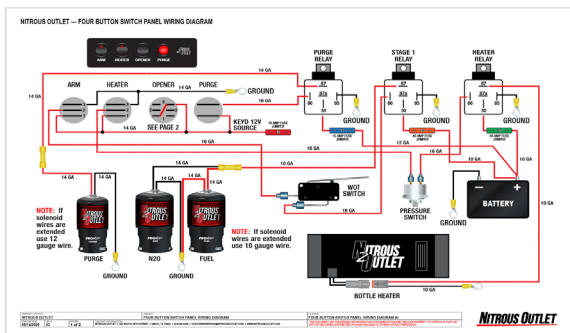
Step 13:

Reinstall the power assembly into the center console.



Step 14:

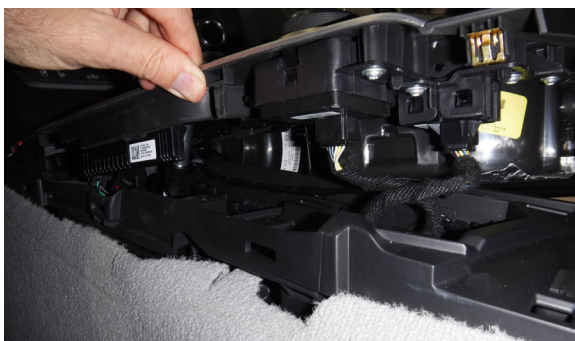
In the car, route the wiring on the back of the switch panel into the dashboard.



Step 15:

This step will cross over into the installation of other components you are installing in conjunction with the switch panel, such as nitrous controller, bottle heater, purge etc. Using the diagrams that came with those components route the wiring.

**Note: The diagram to the left is a basic system diagram with a WOT Switch. To view a larger diagram, turn to the last page of these instructions, however you should be using a nitrous controller that incorporates a window safety switch with TPS activation.



Step 16:

Reconnect the 3 of the 4 electrical connectors on the back of the console cover. You will no longer have the power socket in the vehicle.

IMPORTANT: All appropriate safety equipment (gloves, tools etc.) must be used during the installation of this product(s). Nitro Dave's LLC accepts NO responsibility for injuries resulting in the installation of any product(s). Nitrous oxide is for off-road use only.

WWW.NITROUSOUTLET.COM/INSTALLATION-GUIDES



2014-2019 C7 Corvette Power Outlet Fold-Up Switch Panel

PART NUMBER 00-11036

INSTALLATION INSTRUCTIONS



Step 17:

Press the console cover and shift knob back in place.



Step 18:

Reinstall the center console lid.



Step 19:

Reinstall the plastic and leather trim to the console and under the dash on the drivers side.



Conclusion

You have finished your installation.

IMPORTANT: All appropriate safety equipment (gloves, tools etc.) must be used during the installation of this product(s). Nitro Dave's LLC accepts NO responsibility for injuries resulting in the installation of any product(s). Nitrous oxide is for off-road use only.

WWW.NITROUSOUTLET.COM/INSTALLATION-GUIDES



2014-2019 C7 Corvette Power Outlet Fold-Up Switch Panel

PART NUMBER 00-11036

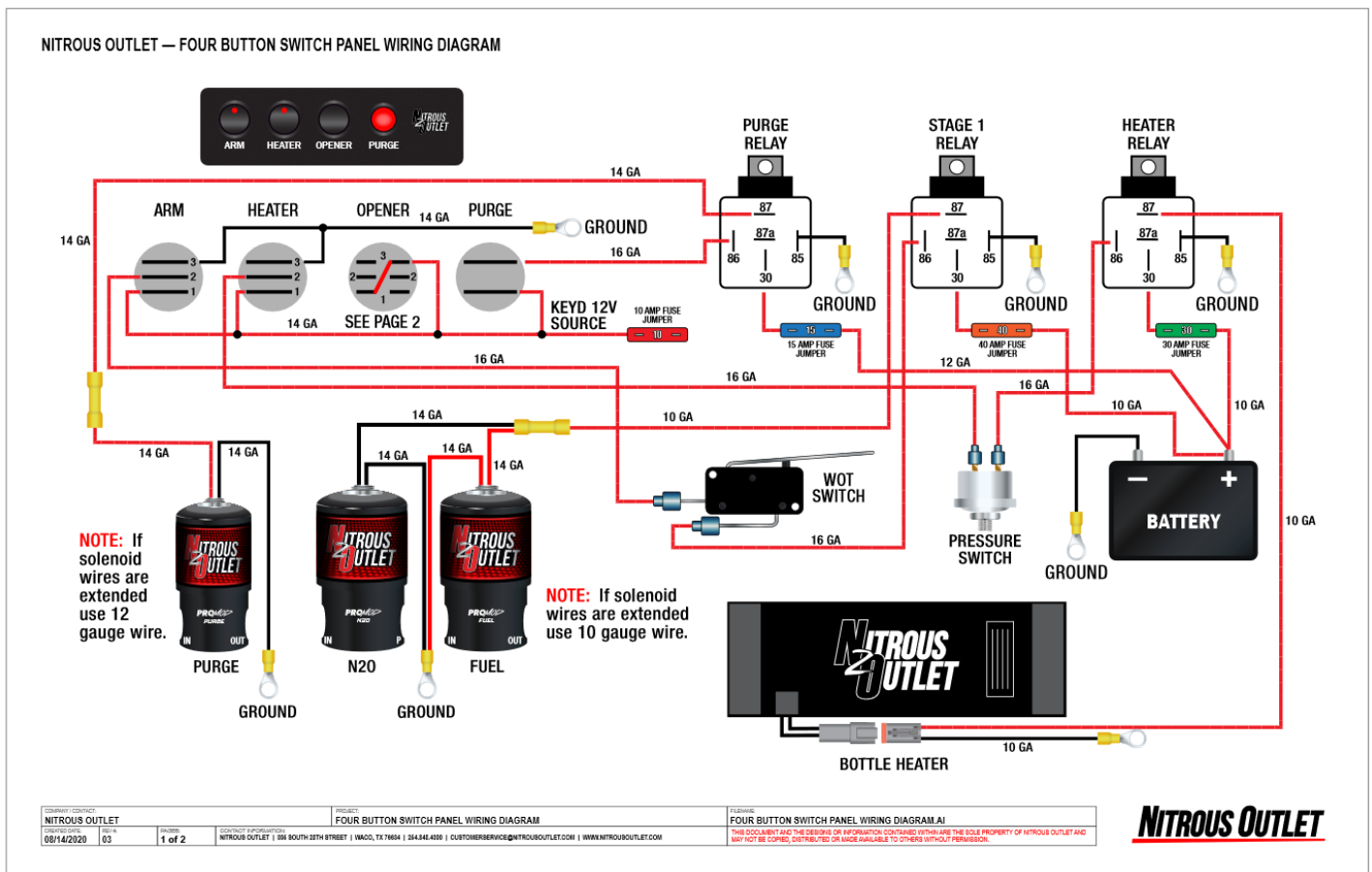
INSTALLATION INSTRUCTIONS

Tips From The Pro's

When wiring your switch panel, double check all of your wiring connections. For a clean, professional install we recommend using heat shrink of all crimped connectors. This will protect the connection, and make the connection stronger between the wire and crimp-on connector.

If you have any questions regarding the installation or operation of your Nitrous Outlet Switch Panel, please call the Nitrous Outlet Tech Support Line at (254) 848-4300 or (866) 648-7637. We are available to answer your questions or concerns Monday-Friday, 8:30am-5:30pm CST.

Switch Panel Wiring Diagram



IMPORTANT: All appropriate safety equipment (gloves, tools etc.) must be used during the installation of this product(s). Nitro Dave's LLC accepts NO responsibility for injuries resulting in the installation of any product(s). Nitrous oxide is for off-road use only.

WWW.NITROUSOUTLET.COM/INSTALLATION-GUIDES

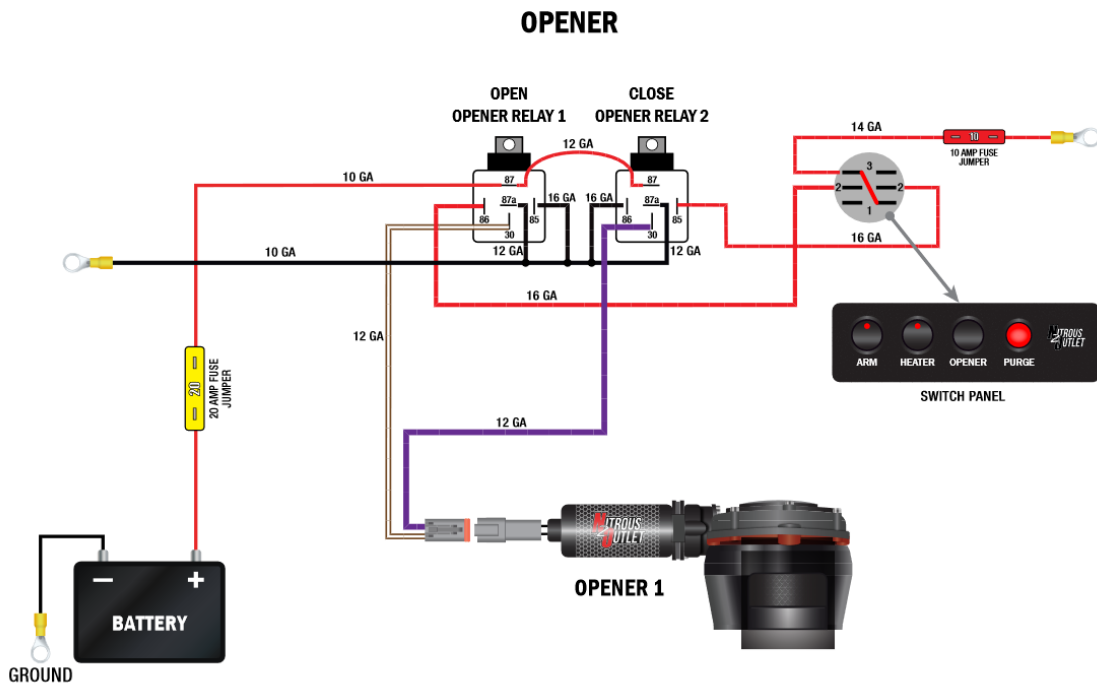


2014-2019 C7 Corvette Power Outlet Fold-Up Switch Panel

PART NUMBER 00-11036

INSTALLATION INSTRUCTIONS

NITROUS OUTLET — OPENER WIRING DIAGRAM



COUNTRY/CONTACT:		PROJECT:		REVISION:	
NITROUS OUTLET		OPENER WIRING DIAGRAM		OPENER WIRING DIAGRAM.A1	
DATE:	REV:	CONTACT INFORMATION:		DISCLAIMER:	
08/14/2020	02	2 of 2		NITROUS OUTLET 305 SOUTH 28TH STREET WACO, TX 76710 254.848.4300 CUSTOMERSERVICE@NITROUSOUTLET.COM WWW.NITROUSOUTLET.COM	
				THIS DOCUMENT AND THE DESIGN OR INFORMATION CONTAINED WITHIN ARE THE SOLE PROPERTY OF NITROUS OUTLET AND MAY NOT BE COPIED, DISTRIBUTED OR MADE AVAILABLE TO OTHERS WITHOUT PERMISSION.	



IMPORTANT: All appropriate safety equipment (gloves, tools etc.) must be used during the installation of this product(s). Nitro Dave's LLC accepts NO responsibility for injuries resulting in the installation of any product(s). Nitrous oxide is for off-road use only.

WWW.NITROUSOUTLET.COM/INSTALLATION-GUIDES