

PRODUCT SPECIFICATIONS

OPERATING VOLTAGE	DC12V
WATERPROOF RATING	IP68
LED CHIPS	CSP3570(75MIL)
HEAT DISSIPATION MODE	FAN COOLING
OPERATING TEMPERATURE	-45°C — +150°C
LIFESPAN	50,000 HOURS
WARRANTY	2 YEARS

PRE-CAUTIONS BEFORE TESTING

1. Please wear work gloves during installation.
2. Do not touch the LED lamp beads directly or prevent any dirt or moisture from adhering to the LED.
3. Do not look directly at the operating bulb since the light with high intensity will cause eye injury at a short distance.
4. Do not touch the bulb body with hands or allow any skin contact since the bulbs reach to very high temperature may result in severe burns.
5. Do not disassemble or modify the product in any way, as this may damage the product or cause fire, personal injury.
6. Do not wash the vehicle when the bulbs are on. Changes in the temperature of the LED bulbs may cause damage.

PRE-INSTALLATION TESTING

1. Remove the original bulb from the vehicle connector.
2. Connect the LED bulb to the vehicle connector.
3. Turn on the LED bulb and test for correct lighting.
4. Check if any warning signs show up on the vehicle dashboard. If no warning occurs, the test is finished.

NOTE:

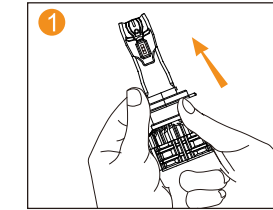
If one of the LED bulbs does not work, it could be attributed to poor contact. Make sure the connection is good. If the problem cannot be solved, swap the left side bulb with the right side bulb and test again. (Remind: The socket has a polarity, please connect it correctly)

WARNING:

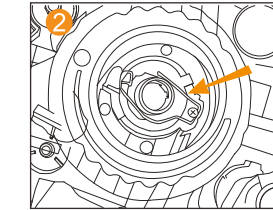
1. Do not switch on the LED bulb until the connection is finished.
 2. If the LED bulb flashes or warnings show up on the dashboard, please connect the extra CANBUS to ensure correct operation.
- If any problems still cannot be resolved under the guidance of this manual, please feel free to contact our customer support team.

INSTALLATION

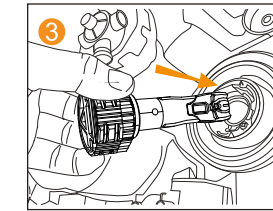
H7 H4 H3 H1



1. Holding the bulb, twist the chuck counter-clockwise until it unlocks, then remove it out.

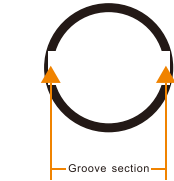


2. Install the chuck to the vehicle's light housing and fix it.
NOTE: Be very careful not to drop the locking ring inside the housing.

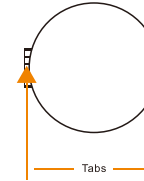


3. Insert the LED bulb through the secure chuck. Line up the tab parts of the LED bulb with the groove sections of the chuck.

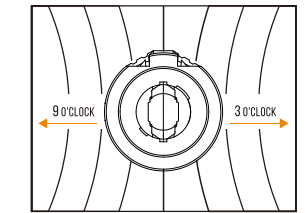
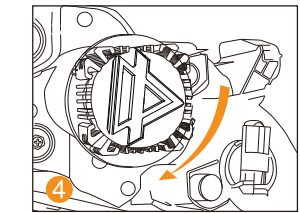
LOCKING RING



LED BULB

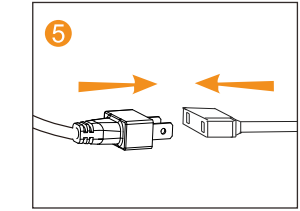


4. While pressing it, turn it clockwise and then lock the bulb in place.



PERFECT BEAM POSITION:

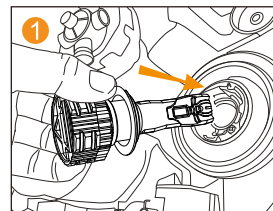
The LED bulb should be installed so that the flat sides of the bulb containing the LED chips are facing 3 o'clock and 9 o'clock.
NOTE: According to different the lamp housing of vehicle models, adjust 0-5°.



5. Connect the connector to the vehicle, finish.

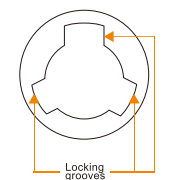
INSTALLATION

9005/9006/H11/5202/880/881/9012/9004/9007/H13

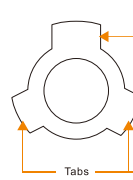


1. Insert the bulb into the light housing.

LOCKING RING

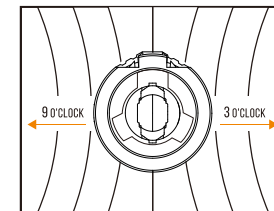
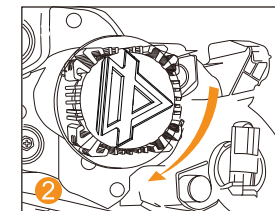


LED BULB



Line up the tab parts of the locking ring with the locking grooves of the light housing.

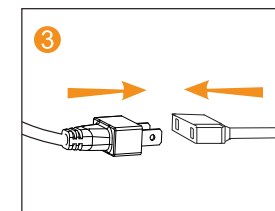
2. Turn the LED bulb clockwise until it does not turn anymore and then lock the LED bulb in place. (excluding socket 5202).



PERFECT BEAM POSITION:

The LED bulb should be installed so that the flat sides of the bulb containing the LED chips are facing 3 o'clock and 9 o'clock.

NOTE: According to different the lamp housing of vehicle models, adjust 0-5°.



3. Connect the connector to the vehicle, finish.

TROUBLESHOOTING

Q: Lights not working

A: Check the plug and wiring first may wrong connection. (9005 9006 9012 H7 with polarity, reverse male connector 180 degrees, and try again.)

Q: Lights flicking/flash

A: Check the plug and wiring first may wrong connection; If failed, need extra resistors (CANbus) to resolve the issue.

Q: Lights automatically on and off repeatedly

A: Overheat protection, check the cooling system if the fan works well. Make sure enough space for heat dissipation in housing.

Q: One of the bulbs not working

A: Make sure correct connection; If still failed, swap the left and right side bulbs try again; Still invalid, may be caused by the vehicle's light assembly.

Q: Vehicle dashboard appears with error/warning

A: This is a harmless side-effect of the unoriginal wattage LED bulbs not being recognized by the vehicle's system and can be resolved with the installation of an additional set of resistors (CANbus).

Q: H7 Installation failed

A: Some vehicles (KIA, MAZDA, BMW, VW, MERCEDES, SAAB, HYUNDAI, etc) need something very unique and not standardized H7 holders. Please contact customer service for purchasing or local shop.

Note: The resistor (CANbus) is polarity sensitive.

If the LED bulbs do not function properly after installation, please reverse the resistor (Canbus) male connector 180 degrees and try again.

BUYER READING

This product can only be used on road-legal automotive vehicles. AUXBEAM cannot accept any responsibility and/or liability. It is your responsibility that the use of the LED Retrofit Lights complies with applicable legal requirements.

Some regions in the USA do not allow modified lights to be used on public roads. Please check your local regulations before installation.

Auxbeam Products are for the whole world, non-US regions are not subject to this regulation.

WARRANTY ATTENTION

The warranty will not apply to the following conditions: CANbus problem: If there are flickering lights issues or light off when installing the led light bulbs, and works when testing with DC 12V power directly. This issue can be solved by adding a pair of CANbus.

Installation problem: Some vehicles may have an installation issue due to narrow housing space or incorrect installation position etc. Please read the size information on the website before purchase.

Artificial reasons: Defective led chips, chopped wire, and collars caused by misuses. please consult your local automotive repair for assistance.

Special h7 socket: special h7 sockets for a few exclusive vehicles are available in our store, please refer to the chart above or contact our customer service for information.

Natural disaster: Damage because of the irresistible natural disaster like earthquakes, floods, etc.

If purchasing from the distributor, please contact them for warranty information.

CONTACT US

CUSTOMER@AUXBEAM.COM

AUXBEAM Lighting 15355 Manila Street, Fontana, CA 92335, USA

Auxbeamlighting
 auxbeam
 auxbeam_lighting
 auxbeam



LIGHT THE WAY