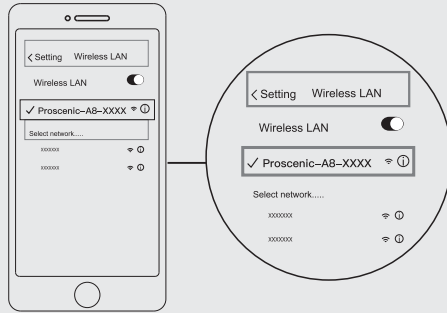


6.Add your WiFi.



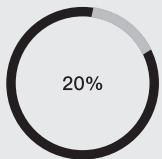
7.Connect with your device.



*Please select a network to connect with your fryer (Supports 2.4G only).

1. Go to "Setting-WLAN" in your phone.
2. Connect to "Proscenic-A8-XXXX".
3. Back to ProscenicHome when connected.

8.Connecting with your device.



Connecting

Keep your router, phone and devices as close as possible.

- Find your device.
- Device register to smart cloud.
- Device initialization.

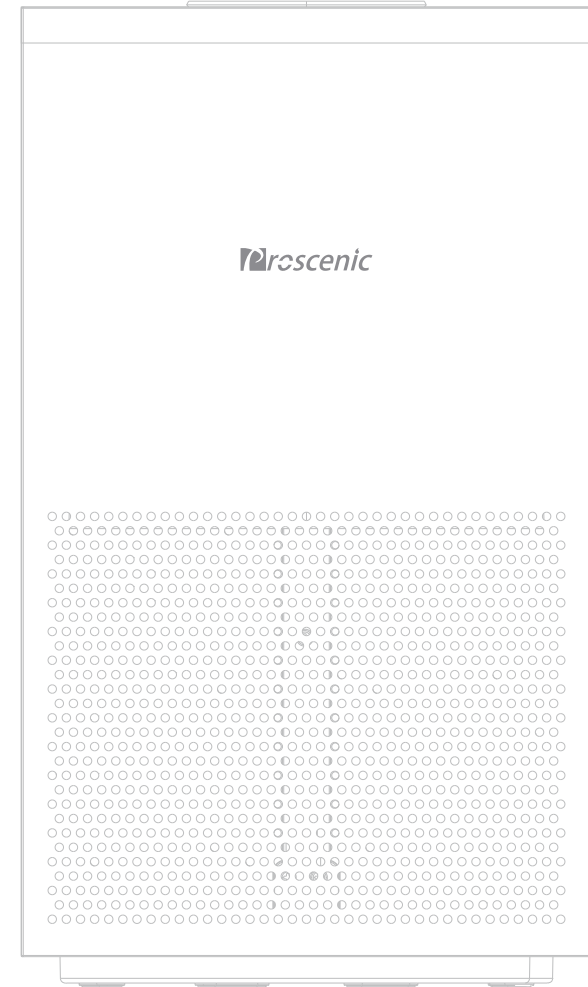
9.Connected.



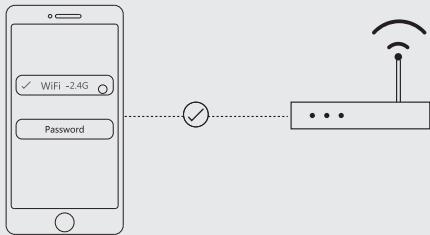
Device added successfully

- Find your device.
- Device register to smart cloud.
- Device initialization.

Proscenic APP Quick Start Guide



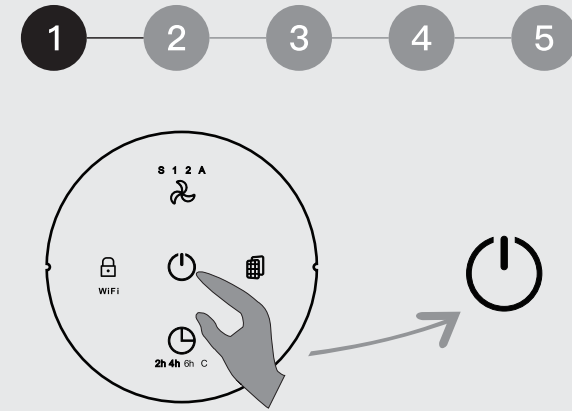
1. Configure the network and connect your phone to WiFi.



2. Scan the QR code below to download the APP, or search for "ProscenicHome" in the APP store to download the APP.

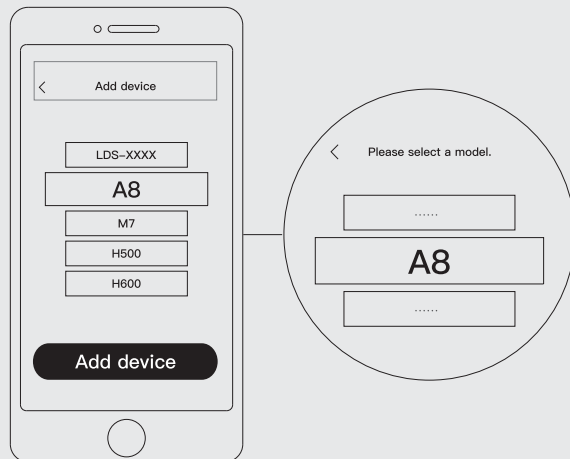


4. Checking machine status.

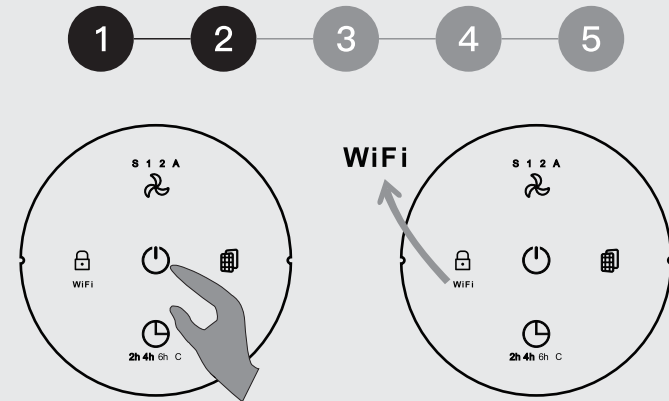


1. Check if the machine is turned on by observing whether the light is on.
2. When the machine is off, press "⏻" to turn the machine on.

3. Please select a model.



5. Set network configuration mode.



1. Hold the button "⏻" for 5s until heard a tinkle.
2. "WiFi" WiFi flashes.