

Name: .....

"Official use only"

# MERCHANDISE ORDER FORM

Don't miss your chance of securing some highly sort after merchandise from the 2023 Yamaha Cod Classic. Order now and pay with your entry form, ensure you don't miss out, stocks are limited. If you have any problems with size or colour upon receipt of goods, it will not be a problem to either swap or receive a full refund. All goods will be available for pick up from the "Merchandise Tent" at the Cod Classic.

2023 Cod Classic Cap - \$20

Total \$ .....

Cod Classic Truckies Cap (Undated) - \$30

Total \$ .....

2023 Cod Classic Singlet - \$25

Size S  M  L  XL  2XL  3XL  5XL

Total \$ .....

2023 Cod Classic Embroidered Polo Shirt - \$40

Size S  M  L  XL  2XL  3XL  5XL

Total \$ .....

Cod Classic Hoodie (Undated) - \$60

Size S  M  L  XL  2XL  3XL  5XL

Total \$ .....

2023 Cod Classic Tournament Style Long Sleeve Fishing Shirt - \$80

Size S  M  L  XL  2XL  3XL  4XL  5XL

Total \$ .....

Submit Merchandise order form with entry form if you wish to purchase goods. All merchandise subject to availability.

Merchandise Total Owing \$ .....

## Entry Form & Payment Options

1 Entry form per person, photocopy if required.

Post fully completed entry forms to **MULWALA FOOTBALL CLUB, PO BOX 44, MULWALA, 2647**

Make all Cheque's / money orders payable to **MULWALA FOOTBALL CLUB**

Card Number

Expiry Date \_\_\_\_/\_\_\_\_ CCV no:

Payment in person - Call in to Lake Mulwala Fish Camp & Ski 74 Melbourne Street, Mulwala

**Adult \$90** pre-paid \$100 on weekend **Junior \$45** 15yrs and under as of 2/12/23 (circle one)

First Name:  Surname:

Postal Address:

Town/Suburb:  Postcode:

Ph: AH  Mobile:

By supplying you e-mail address you agree to receive all future Cod Classic and other associated fishing events promotional media via e-mail.

Email:

PAID  
OFFICIAL USE  
ONLY

Competitor Number:  
(Official Use Only)

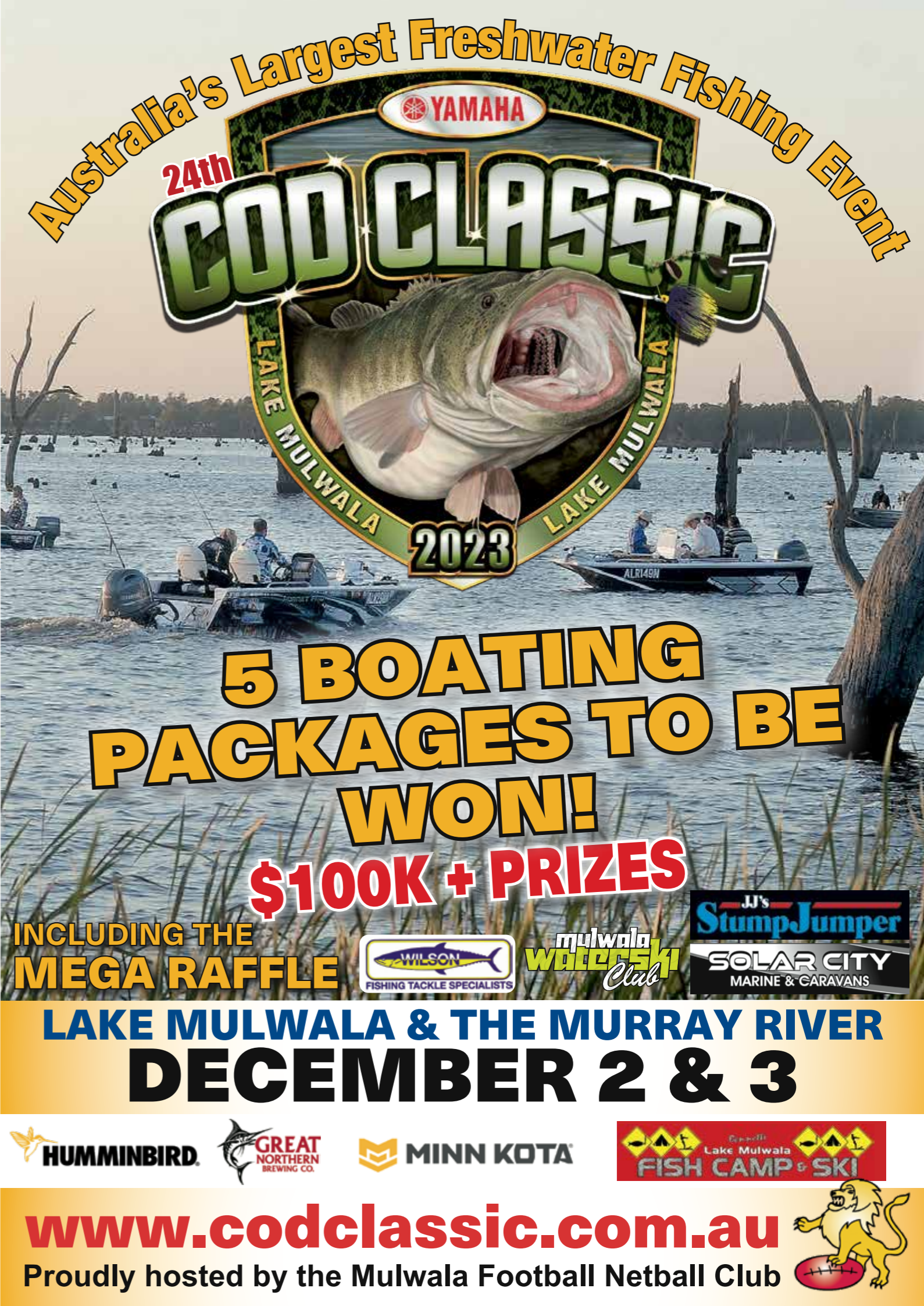
Conditions of Entry. In consideration and as a condition of my entry into the Yamaha "Cod Classic", I, my heirs, executors and administrators agree to waive all and any claim, right or cause of action which I or they may have against the Mulwala Football/Netball Club Inc., Federation Shire, Moira Shire, Goulburn Murray Water or it's servants, agents and assigns for or arising out of my death injury, damage, or loss of any kind (including equipment) which I may suffer or sustain in the course of or consequent upon my entry or participation in the competition. I have read the "Conditions of Entry" and "Rules & Regulations", both of which I clearly understand and agree to be bound by.

For Adult entrants, Signed: ..... Date:.....

For Jnr. entrants (must be completed by Parent/Guardian), Name:.....Signed: .....Date: .....

## Early Bird Entrants

All Adults Fully Paid by 5PM, 17th NOVEMBER will go into a draw to WIN NUMEROUS PRIZES.  
Drawn Saturday 2nd December @ 9pm at Mulwala Football Ground. Winner must be present.  
Juniors early bird entrants will go into a draw to WIN a Special Package of Lures.



[www.codclassic.com.au](http://www.codclassic.com.au)  
Proudly hosted by the Mulwala Football Netball Club



## FISHING SECTIONS

### ADULTS

#### Murray Cod

##### 1. Murray Cod - Catch & Release Prize Draw

Open to competitors who catch a legal size Murray Cod and have the photograph verified as per event regulations. Competitors go into a random draw to win a 3.90mtr Quintrex Boat, 15hp Yamaha motor, trailer, Humminbird Fish Finder, framed fishing print (perpetual) donated by Tackleworld Wagga and numerous other prizes.

Note: There will be additional prize draws for Catch & Release fish.

##### 2. Murray Cod - Mulwala Football Netball Club Champion of Champions

Competitor who releases the longest Murray Cod. Numerous prizes and perpetual shield.

#### Golden Perch

##### 3. Golden Perch - Prize Draw

Open to all competitors who catch a 45cm+ Golden Perch, have it measured and release it alive will go into a draw to win numerous prizes.

##### 4. Golden Perch - Longest

Competitor who releases the longest Golden Perch.

### JUNIORS

#### Murray Cod

##### 5. Murray Cod - Stumpjumper Lures

##### Catch & Release Prize Draw

Open to competitors who catch a legal size Murray Cod and have the photograph verified as per event regulations. Competitors go into numerous random prize draws for all C&R fish.

##### 6. Murray Cod - Bassman Spinnerbaits Jr Champion of Champions

Competitor who releases the longest Murray Cod. Numerous prizes and perpetual shield.

#### Goldern Perch

##### 7. Golden Perch - Prize Draw

Open to all Junior competitors who catch a 45cm+ Golden Perch, have it measured and release it alive.

##### 8. Golden perch - Longest

Competitor who releases the longest Golden Perch.

### Note

A camera and measuring device / brag mat are compulsory. All legal size Murray Cod and 45cm+ Golden Perch must be photographed as per requirements then released ASAP upon capture. Photographs will be verified at competition HQ at the end of each days fishing.

There will be prizes awarded to the second and third longest Murray Cod / Golden Perch / European Carp.

## European Carp - Open Section

All competitors, both Adult and Junior who catch a European Carp and have it measured at a land based measuring station / collection point, will go into a draw to win a 3.90mtr Quintrex Explorer Boat, 15hp Yamaha motor, trailer and a Humminbird Fish Finder.

### European Carp - Longest

Open to all European Carp caught by either Adults or Juniors.

The Cod Classic is a total **CATCH & RELEASE** event for all **MURRAY COD & GOLDEN PERCH**

## Fishing Hours

From 6.30am - 6.30pm Saturday 2nd December.

From 6.30am - 10.30am Sunday 3rd December

### Boundaries

Lake Mulwala- Fishing must take place between the general vicinity of the junction of the Murray & Ovens Rivers at Bundalong down to 200mtrs from the Yarrowonga Weir. Murray River - From 200mtrs below the weir wall to Bruce's Beach N02 (approx. 12kms downstream). Refer to maps for these locations.

## Rules & Regulations

### Entry Fees & Entitlements

#### Adults \$90 - Pre Paid, \$100 on weekend.

- 1 complimentary ticket in MEGA RAFFLE draw including prizes such as a Yamaha / Quintrex / Humminbird boating package.
- Entry into a special draw for all Adult competitors registered up until 8.30pm Friday night (drawn Friday at approx. 8.45pm) for a 3.90mtr Quintrex Explorer Boat, 15Hp Yamaha Motor, Trailer & Humminbird Fish Finder.
- Souvenir Yamaha "Cod Classic" Stubby Holder.
- Sunday BBQ lunch (11am - 12.30pm)

#### Juniors \$45 - Pre Paid, \$50 on the weekend

- A L. Wilson & Co Lure
- A Bassman Spinnerbait
- Sunday BBQ lunch (11am - 12.30pm)

### Notes

- All listed prizes subject to availability.
- Registrations will be taken at the Mulwala Football Ground between 4pm - 10pm Friday 1st Dec and 5.30am - 9.30am Sat 2nd Dec
- A full briefing will take place at 8.30pm Friday night.
- "Venow Rods Cod Talk" incorporating Catch & Release information plus plenty of Cod fishing advice from 7pm Friday night.
- An information booklet will be issued upon registration with maps of both Lake Mulwala and the Murray River.
- A complete range of fishing gear, bait and tackle along with NSW fishing licenses will be available over the weekend at the Mulwala Football Ground.

- If paying by mail as an Early Entrant, a receipt will NOT be sent out. If concerned about receipt of payment contact Tony on 0439 441 667.
- All prize winners must be present except for raffle winners.

### Compliance with Appropriate Fishing Authorities

- All species caught must comply with fishing regulations as required by the NSW Government and must be caught on either fishing rods or handlines.
- Entrants must comply with NSW Maritime regulations, and any other relevant legislation.
- It is the responsibility of entrants to be fully aware of regulations covering minimum sizes and bag limits of fish, the requirements of appropriate boat licenses and safety equipment for NSW waters.
- Lake Mulwala waters are covered by NSW fishing laws, meaning you only need a NSW fishing licence to fish in Lake Mulwala.

### Regulations

- \* All regulations as outlined above must be adhered to. Breach of these regulations will result in disqualification of the offending angler.
- \* Any boat found to contain illegal equipment will result in disqualification of all competitors in the boat.
- \* The committee reserves the right to inspect any equipment or bait used by competitors.
- \* Any competitor found to be in breach of any of the above rules and / or regulations by NSW Fisheries will be disqualified from the competition.

### Acceptance

The organisers, may at any time before the commencement, or during the Yamaha "Cod Classic", refuse to accept and / or reject any entry without assigning a reason thereof and without in any way whatsoever for doing so. Competitors signature on entry form indicates that they understand all rules and regulations of which the Yamaha "Cod Classic" is run by and will abide by them at all times.

*\*Refunds will not be given any later that 24th Nov unless a doctors certificate or obituary notice with competitors name associated to it are presented.*

## ENQUIRIES

Event Director Tony Bennett M 0439 441 667

E-Mail - [codclassic@bigpond.com](mailto:codclassic@bigpond.com)

Mail - Cod Classic, PO Box 44 Mulwala 2647

Web - [www.codclassic.com.au](http://www.codclassic.com.au)  <https://www.facebook.com/codclassic/>