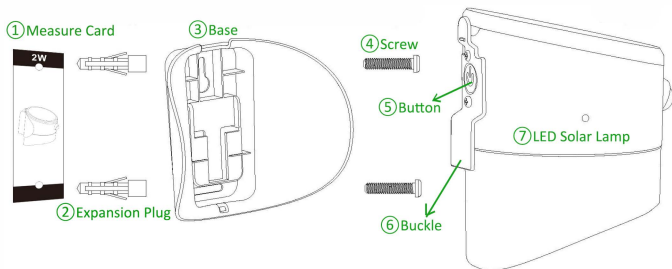


Installation



- ① Pls use the Measure Card to measure hole position correctly and drill 2 holes.
- ② Fix 2 expansion plugs into the holes.
- ③-④ Fix the lamp base tightly with screw.
- ⑤ Press the back button to switch on lamp, adjust to the demanded working mode.
- ⑥-⑦ Insert the lamp to the base.

Notice

1. This is a solar powered lamp, please install it in a location where can get enough sunshine.
2. Please note the lighting time depends on sunshine duration & weather.
3. The lamp will light up when the environmental brightness is less than 30lux.
4. Lamp need to be installed ≤ 4 Mtr from the ground.
5. Battery is replaceable, 18650 Li-ion battery, 1200mAh/3.7V.
6. Please notice the place of anode and cathode when replace the batteries.
7. Please do not dispose the battery with household garbage to avoid explosion.



Solar LED Wall Light with Sensor

User Manual



Crown Light, So Different!



Please read and follow all instructions to operate.
Save this manual for future reference.

Specification

Product Name	Solar LED Wall Light-Crown
Power/Lumen	2W/200LM
LEDs	SMD2835*18PCS
Li-ion Battery	1200mAh/3.7V, 18650 Replaceable
Solar Panel	1.0Wp, Mono-crystalline silicon
Working Mode	3 different lighting modes
Detection Angle/Area	120°/ ≤6Mtr
Visible Distance	7Mtr
IP Degree	IP65 Directional
Warranty	24 months (battery 12months warranty)
Lifespan	35,000hrs
Installation Height	≤4Mtr
Packing	Colorbox (1*Solar light, 1*Accessory bag, 1* User manual, 1*Measure card)

Features



ZERO Electricity Cost



Solar Powered



PIR Detective



Light on/off automatically

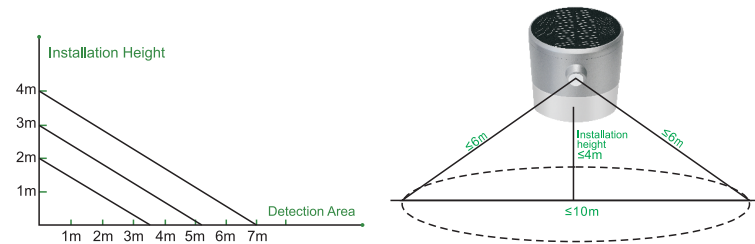


Outdoor



Cordless

3 Working Modes

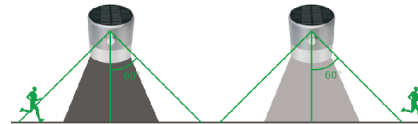


Pls press the Button to adjust to different working mode:

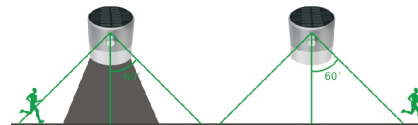
Press 1st time for Mode A. Press 2nd time for Mode B.
Press 3rd time for Mode C. Press 4th time for off.



Mode A: Automatically turns on at the dusk (<30Lux) and remains 20% bright, up to 5 hours after which it turns off.



Mode B: Automatically turns on to full brightness (200lm) when motion is detected in the range ≤6 mtrs and then turns to 3% brightness in 20 seconds of no motion.



Mode C: Automatically turns on to full brightness (200lm) when motion is detected in the range ≤6 mtrs and then turns off in 30 seconds of no motion.