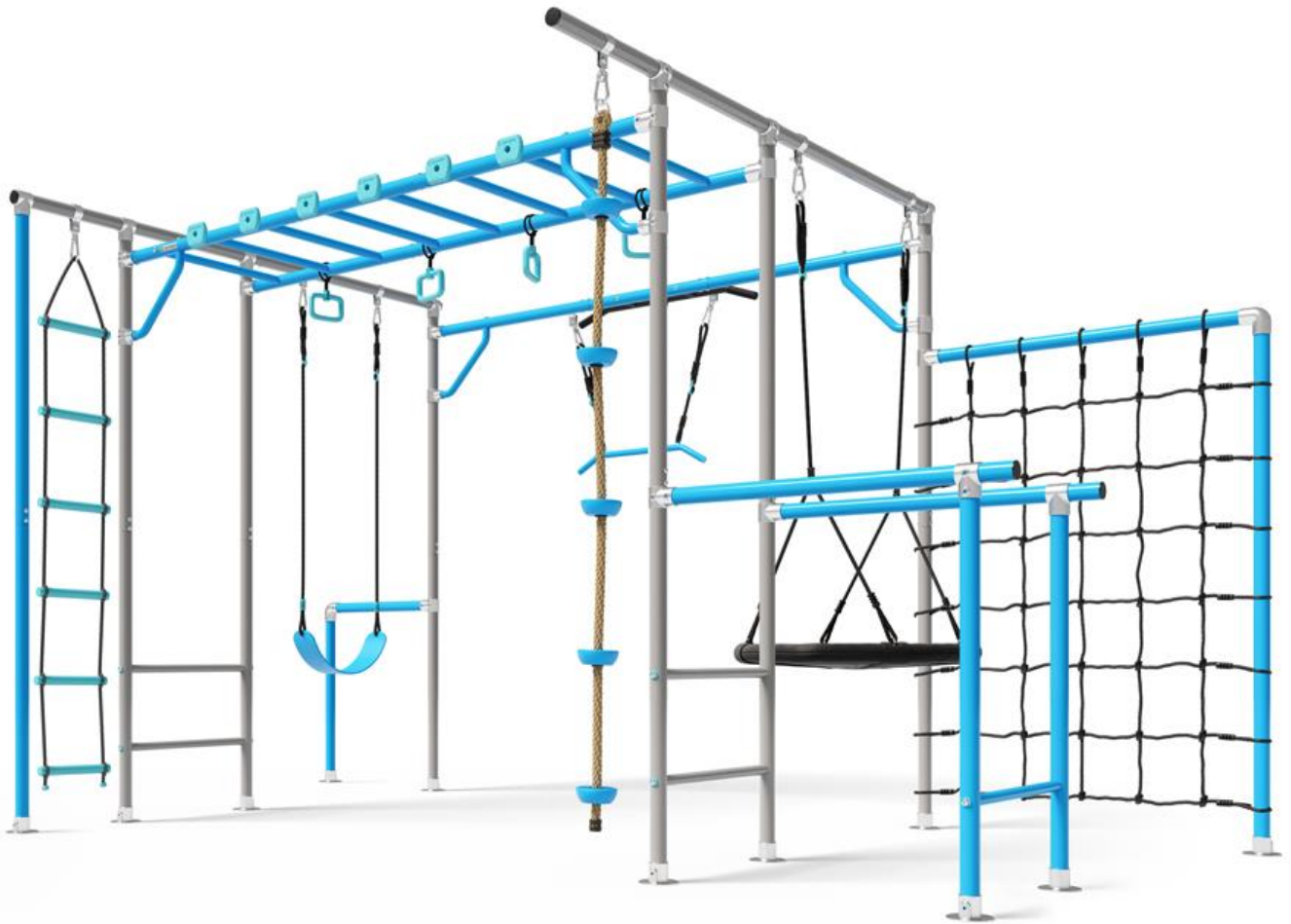




growplay

Assembly, Maintenance and User Instructions Manual



CLICK HERE FOR FULL ASSEMBLY VIDEO INSTRUCTIONS

<https://youtu.be/SzLE9fCtxxk>

WARNING !

READ ALL PRECAUTIONS AND INSTRUCTIONS IN THIS MANUAL
BEFORE USING THIS EQUIPMENT.

KEEP MANUAL IN A SAFE PLACE FOR FUTURE
REFERENCE. MAXIMUM OCCUPANCY = 10 USERS @ <50KG

TOTAL WEIGHT CAPACITY = 500KG

AGE OF USERS 3+

GROWPLAY MONKEYBARS® PTY. LTD.

ABN : 36 627 796 141

P.O Box 2527, Clarkson, WA , 6030

Model :GP1-KD REV 6 2023

CERT : EN71-8:2018

BEFORE YOU BEGIN

Thank you for purchasing Growplay Monkey Bars. With regular maintenance, your set will provide many years of backyard fun.

Before you start to assemble your new GROWPLAY MONKEY BAR SET please ensure that you have read this important information and that it is communicated to all users prior to use.

INSTALLATION WARNING!

WARNING: THIS DISASSEMBLED PRODUCT MAY CONTAIN SMALL PARTS WHICH POSE A CHOKING HAZARD TO CHILDREN UNDER 3.

- Read all important precautions and instructions in this manual and all warnings on the equipment to reduce the risk of serious injury.
- It is the responsibility of the owners and supervisors of this equipment to ensure that it has been correctly assembled, anchored, maintained and the users obey the safety instructions.
- This product is intended for use by children AGE OF USERS 3+
- Until the equipment has been correctly assembled and anchored, do not let children use equipment.
- Always use Growplay Monkey Bars under adult supervision.
- It is required that the play equipment be ground anchored with the ground anchor nails provided onto a soft or shock absorbing surface.
- Do not install over concrete or any other hard surface as a fall onto a hard surface could result in serious injury or death.
- Ensure that the equipment is installed on a level surface and no less than 1.8 metres from any structure or obstruction.
- Always inspect the equipment before it is used and replace any worn, defective, or missing parts.
- Ensure that all connectors are regularly checked.

WARNING: ACCESSORIES MUST ONLY BE ATTACHED IN POSITIONS AS SHOWN IN THESE INSTRUCTIONS. FAILURE MAY RESULT IN DEATH OR SERIOUS INJURY.

ELECTROCUTION HAZARD

Growplay monkey bars are made from metal. They are not grounded and will conduct electricity. For obvious reasons and electrocution hazard exists. NO lights, heaters, electrical and extension cords or any household electrical device or appliances are to be permitted on or in the frame at any time.

FOR THE USER

- Do not use this equipment when under the influence of drugs or alcohol.
- Do not jump on or off the frame.
- Wear clothing that does not have loops, hooks, drawstrings, or anything else that can get caught on the frame.

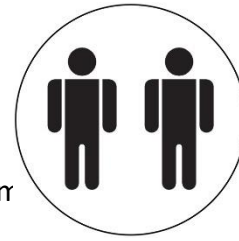
USER INSTRUCTIONS

1. GROWPLAY MONKEY BARS are designed for up to 6 persons and not exceeding total weight of 500kg.
2. AGE OF USERS 3+
3. Adult supervision for children of all ages is required at all times.
4. Educate children not let to walk close to, behind and in front, between moving parts.
5. Children are not to use the equipment in any other manner than intended.
6. Teach children not to hop off equipment while in motion or jump from moving play items.
7. Do not twist chains or ropes or loop them over support bars as this may reduce the structural integrity of the rope or chain.
8. Do not allow use of the equipment when it is wet as injury due to slips may occur.
9. Children are to be dressed in appropriate clothing while playing on or around the equipment with correctly fitted and full foot enclosing footwear. Loose fitting items, hood, and neck draw strings etc could potentially cause injury or death by strangulation.
10. Inform children not to attach items to the playground equipment that are not specifically designed or approved for use with the Growplay monkey bar equipment, such as, but not limited to jump ropes, clothesline, pet leashes, cables, and chain as they may cause a strangulation hazard.



FOR FULL STEP BY STEP VIDEO INSTRUCTIONS
SEARCH GROWPLAY ORIGINAL RANGE ON
YOUTUBE

ASSEMBLY: TWO PERSONS



Before starting assembly, please carefully read the following information:

- Two people are required to assemble frame.
- **DO NOT FULLY TIGHTEN BOLTS UNTIL FRAME IS ASSEMBLED.**
- Place all parts in one cleared area and remove the packaging material. Do not throw away material until assembly is complete.
- Dispose of the packaging thoughtfully and ensure any plastic bags and small parts are kept away from children or pets.
- Ensure that you check all tightening of parts **twice** and that the frame is stable after assembly. Small movement through the frame is normal.
- Allow plenty of time to ensure that your monkey bars are set up correctly and safe to use.
- Ensure that no exposed red tape is present and that all fixtures are extremely tight.

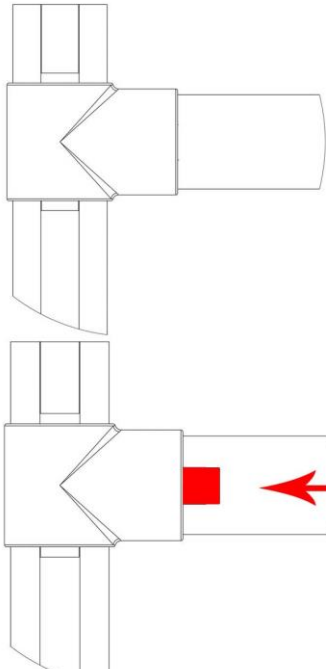
IMPORTANT! ENSURE GROUND IS LEVEL. USE SPIRAL ANCHORS ON 4 OUTSIDE LEGS TO SECURE FRAME AND INSERT 1 X GROUND SPIKE IN EACH FOOT BEFORE USE. SPIRAL ANCHORS ONLY REQUIRED IN SOFT SOIL CONDITIONS. IF SOIL IS HARD THEY WILL BREAK AND ARE NOT REQUIRED.

Spiral Anchors:
For use in soft
soil/sand only.



Ground Spikes:
For use in **all**
ground types.

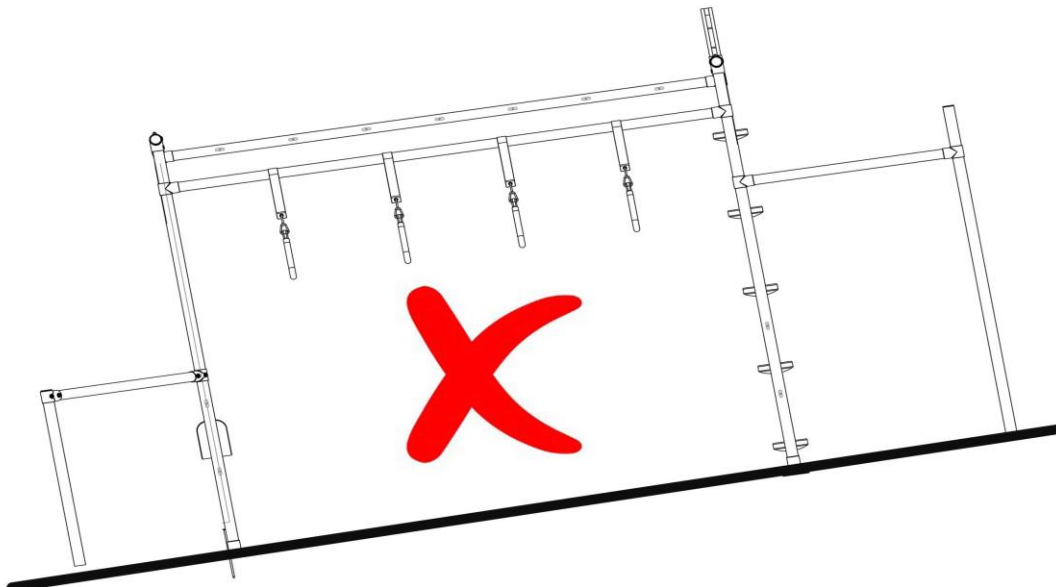
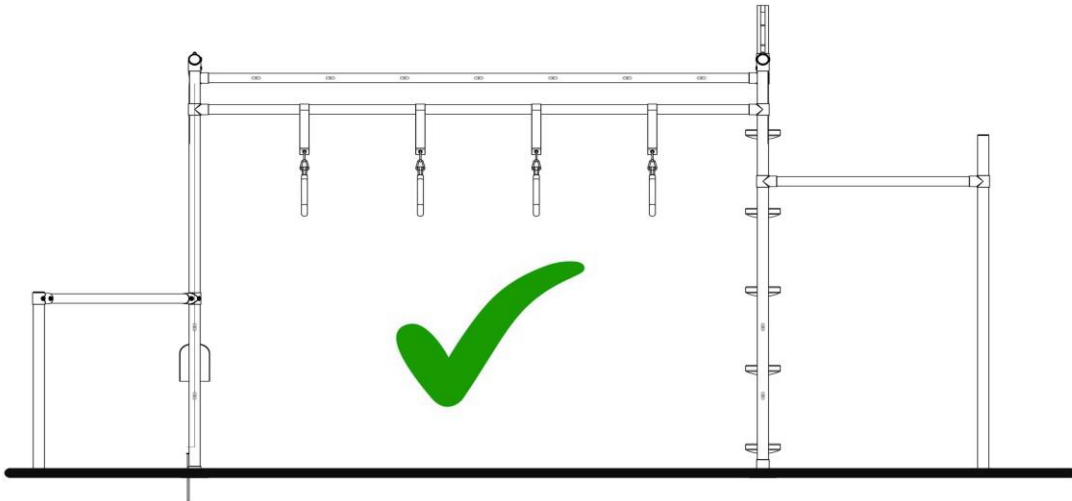




ENSURE THE TUBE IS
CORRECTLY INSERTED
NO RED TAB SHOULD BE
VISIABLE.

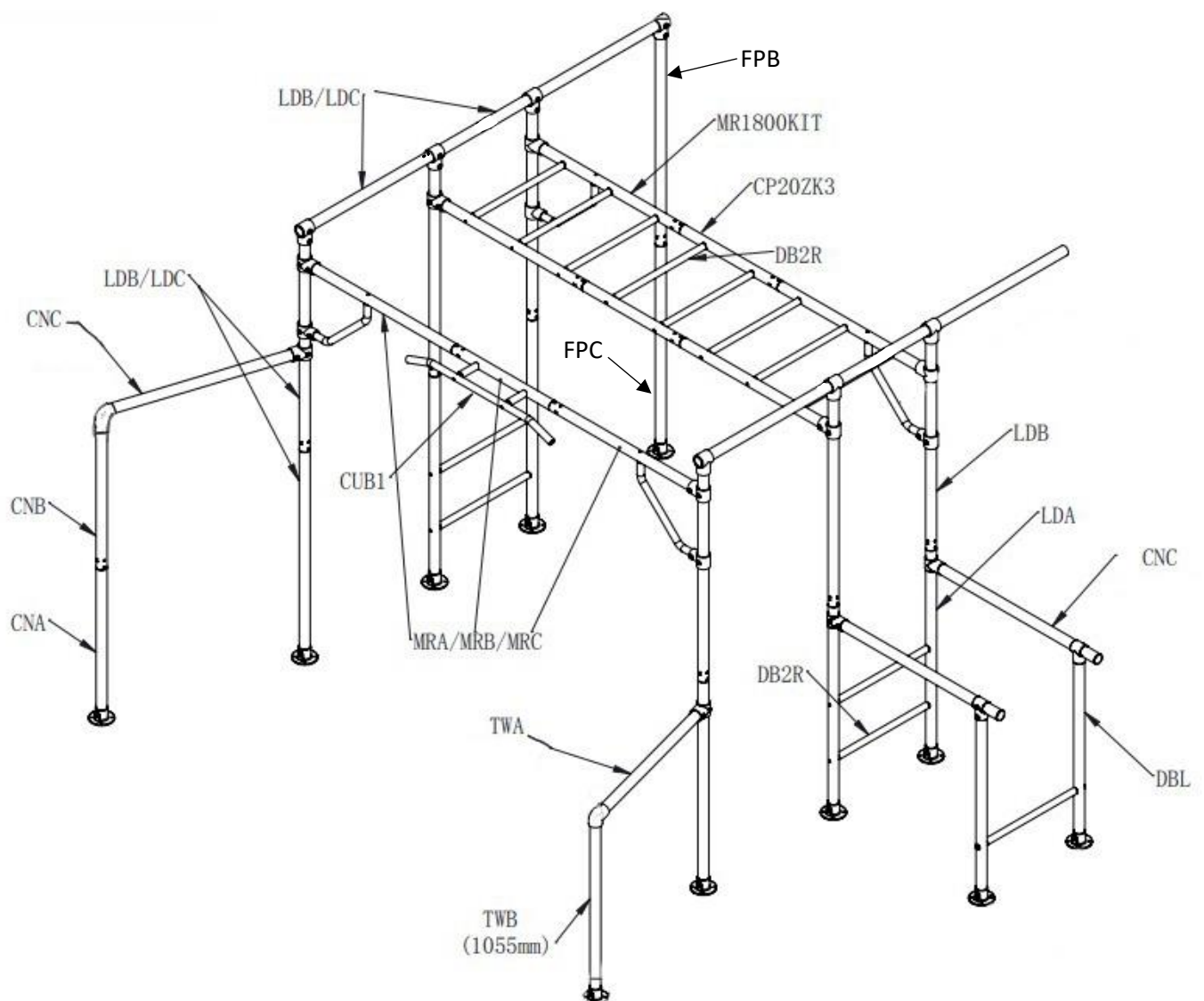


ENSURE GROUND IS LEVEL AND USE GROUND
ANCHOR SCREWS AND PEGS PROVIDED.

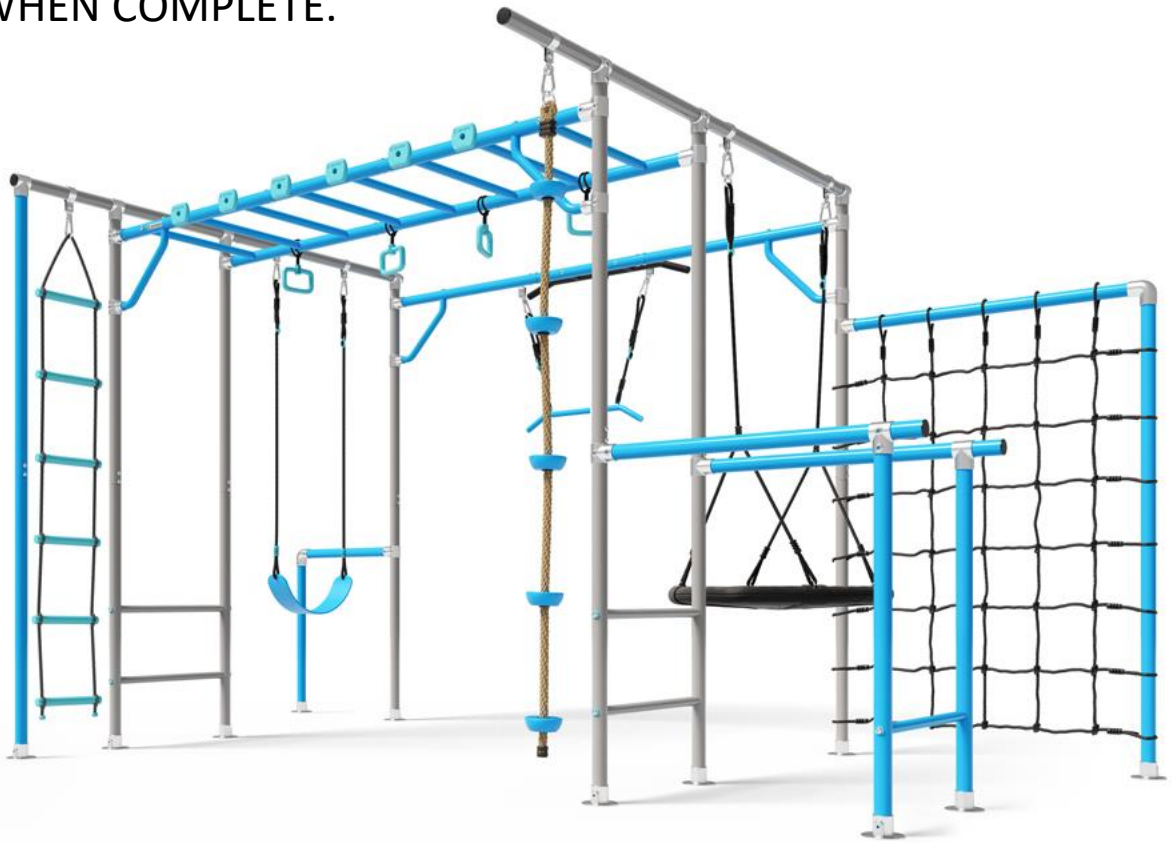


GP1-KD ORIGINAL FRAME CONTENTS

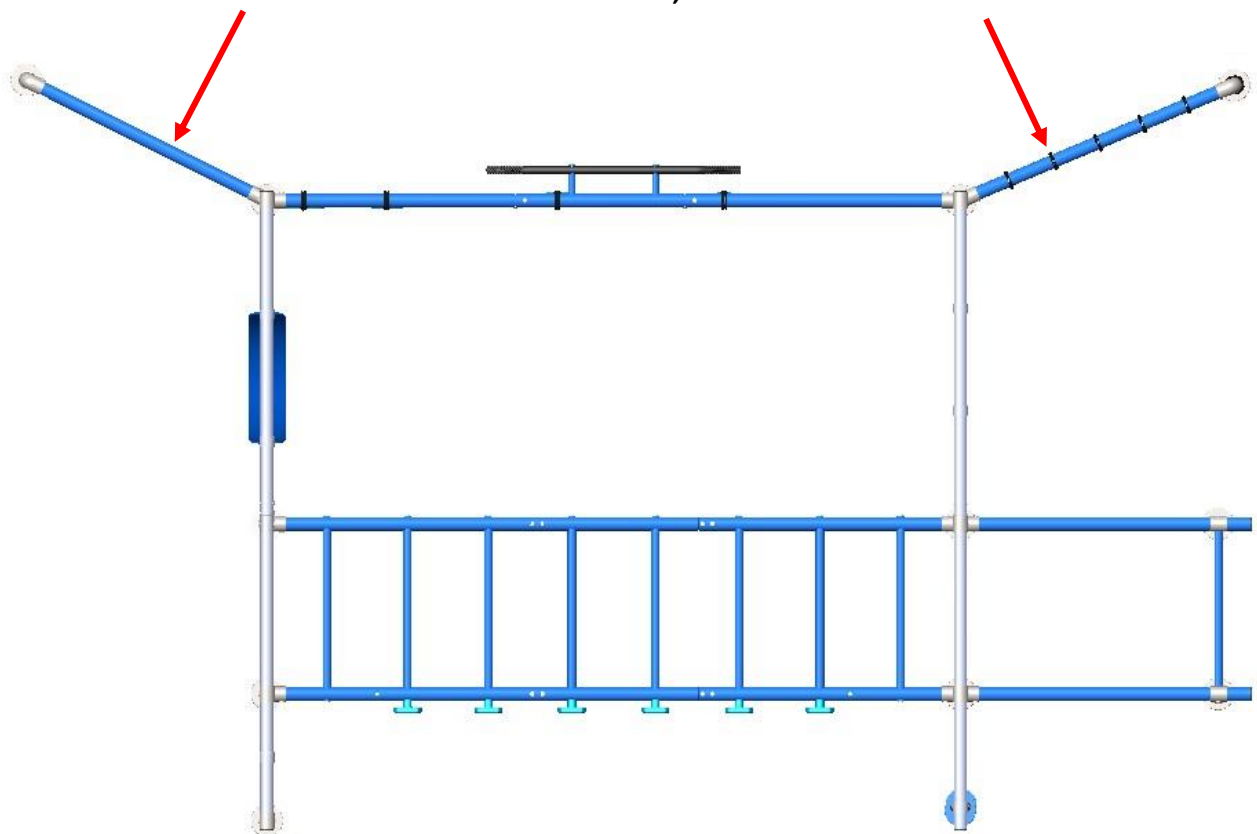
DESCRIPTION	SKU	QTY	BARCODE
ORIGINAL ACCESSORIES KIT	GPAC	1	794712825524
TUBE ASSEMBLY 1	TA1	1	794712825494
TUBE ASSEMBLY 2	TA2	1	794712825500
TUBE ASSEMBLY 3	TA3	1	794712825517
LD1 LADDER	LD1	2	794712825265
MONKEY RUNG 1800	MR1800KIT	1	794712825258



TAKE YOUR TIME! THIS IS HOW YOUR FRAME SHOULD LOOK WHEN COMPLETE.

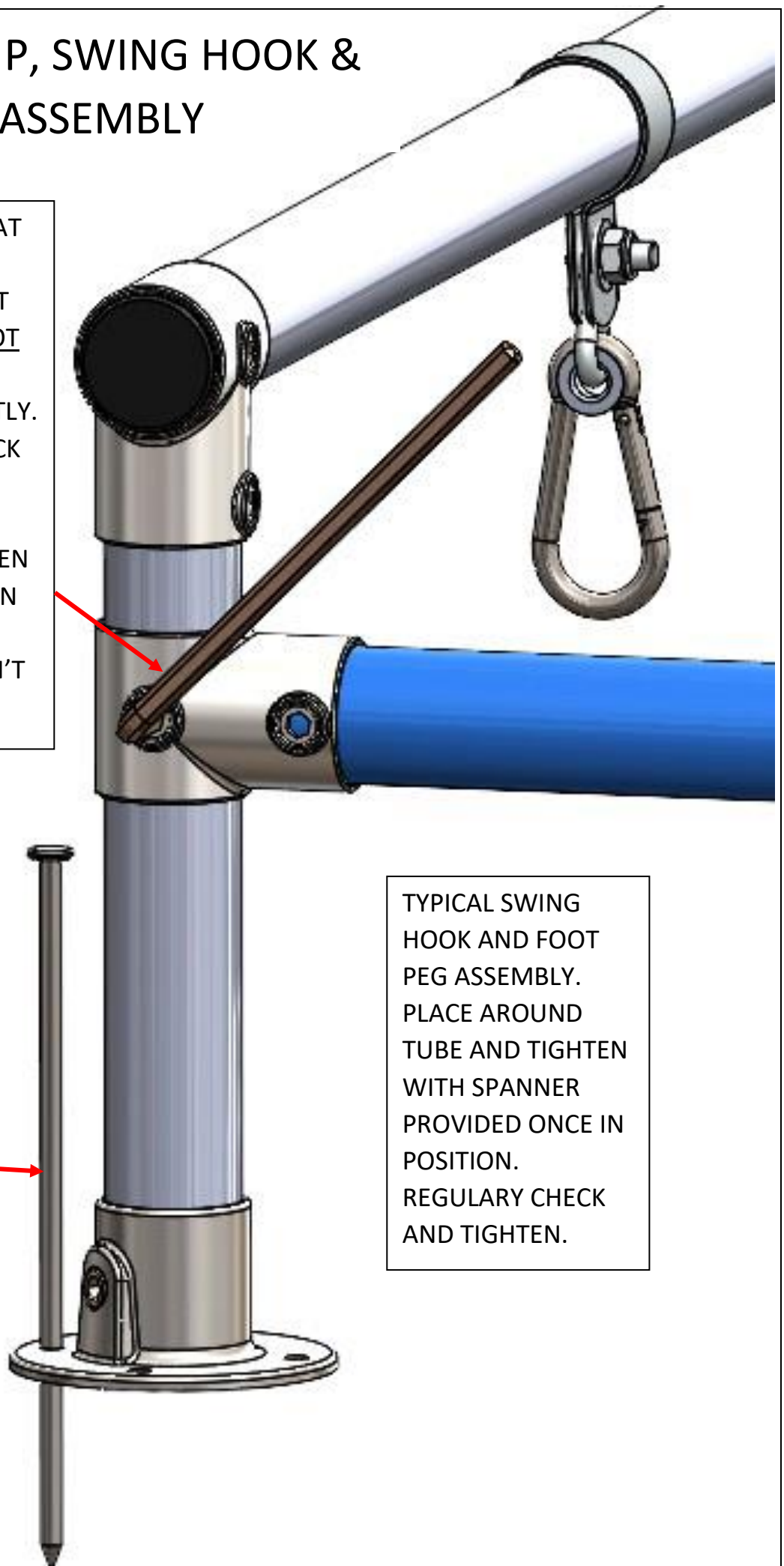


FOR SAFETY AND STABILITY, SUPPORT BARS MUST BE POSITIONED AS SHOWN, ~15-30 DEG ANGLE.



TYPICAL CLAMP, SWING HOOK & FOOT ASSEMBLY

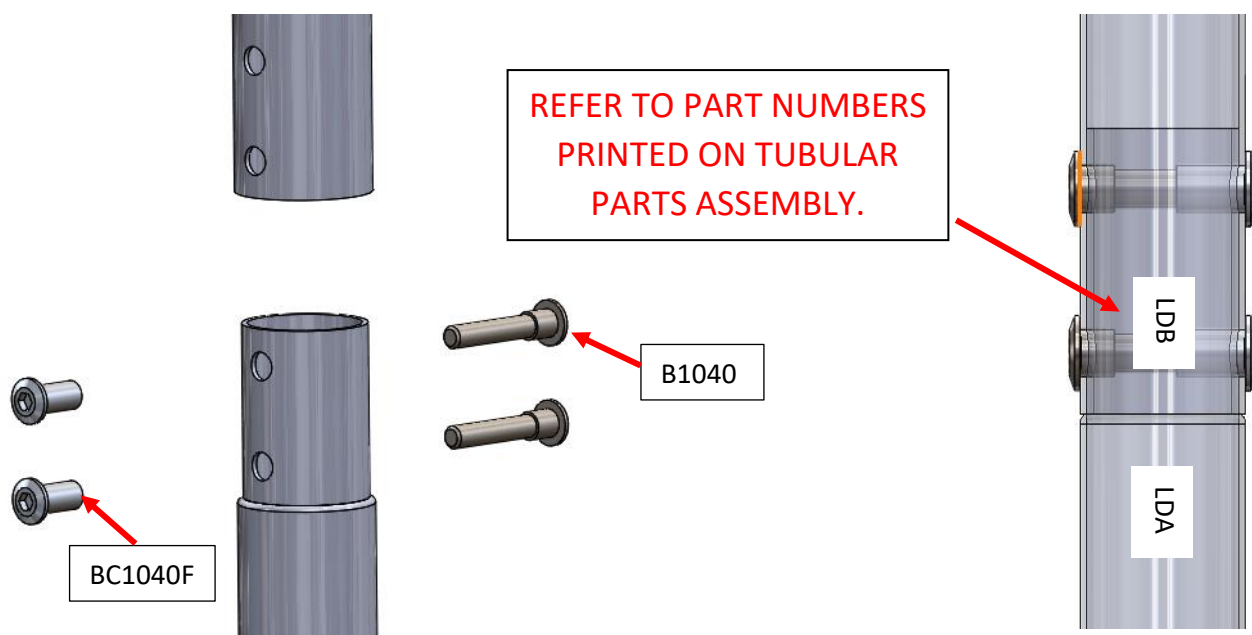
WARNING ! ENSURE THAT THE RED WARNING LOCATOR TAPE CAN NOT BE SEEN. IF YOU CAN NOT SEE THE RED TAPE THEN THE TUBE IS IN CORRECTLY. ENSURE THAT YOU CHECK AND TIGHTEN EACH CONNECTOR SEVERAL TIMES BEFORE USE. WHEN WE SAY TIGHT, WE MEAN AS TIGHT AS YOU CAN POSSIBLY GO. YOU WON'T DAMAGE IT.



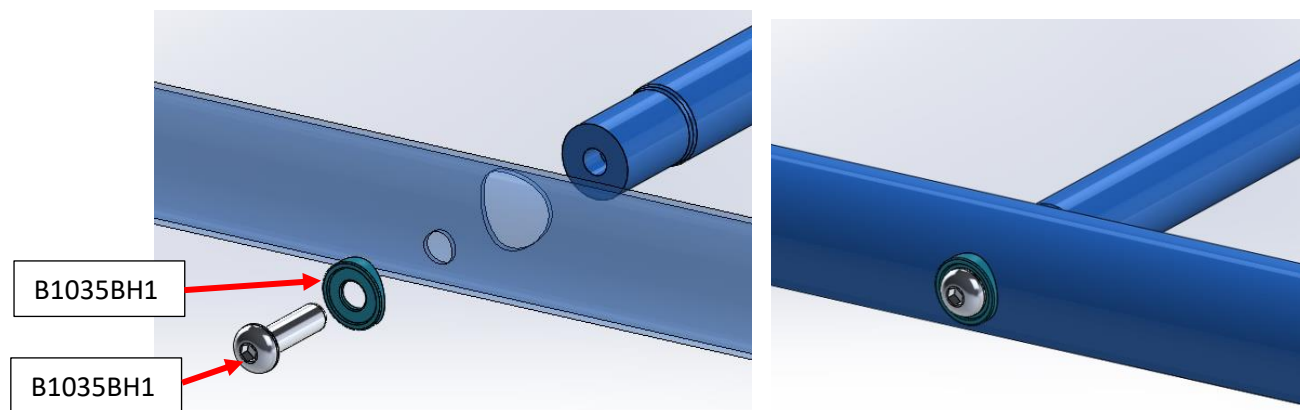
1 PEG PER FOOT

TYPICAL SWING HOOK AND FOOT PEG ASSEMBLY. PLACE AROUND TUBE AND TIGHTEN WITH SPANNER PROVIDED ONCE IN POSITION. REGULARY CHECK AND TIGHTEN.

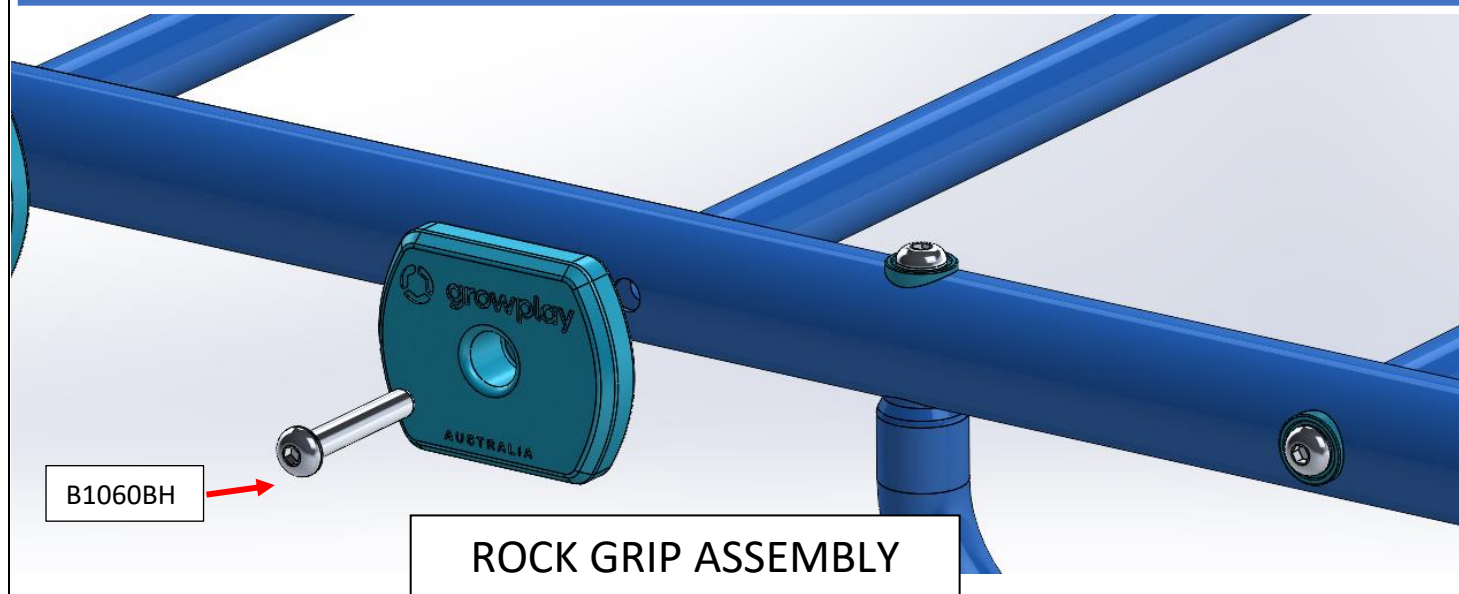
IMPORTANT! ONLY FULLY TIGHTEN BOLTS ONCE FRAME IS ASSEMBLED. FINGER TIGHTEN ONLY DURING ASSEMBLY.



TYPICAL CHICAGO BOLT AND TUBE ASSEMBLY

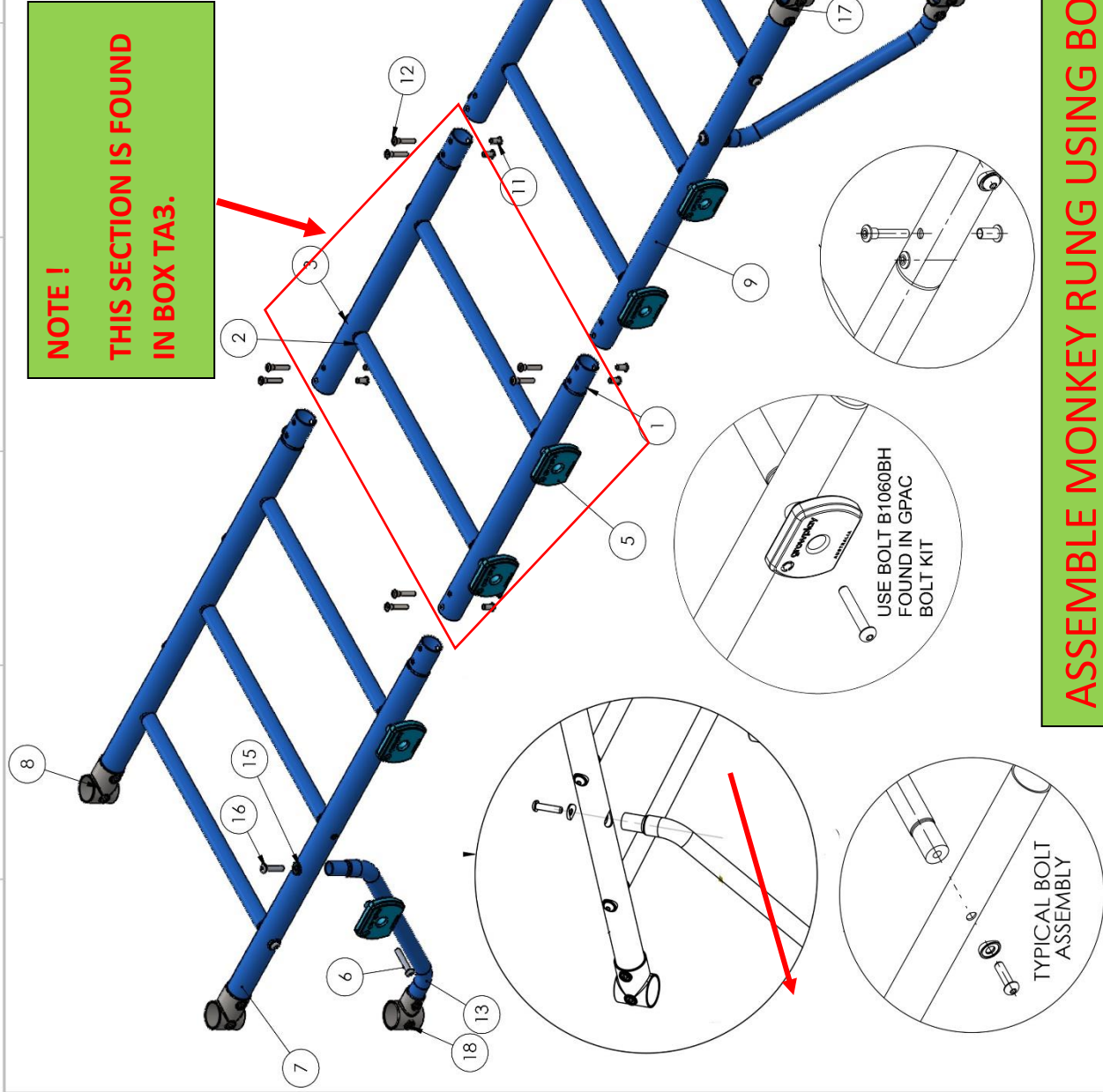


TYPICAL RUNG ASSEMBLY



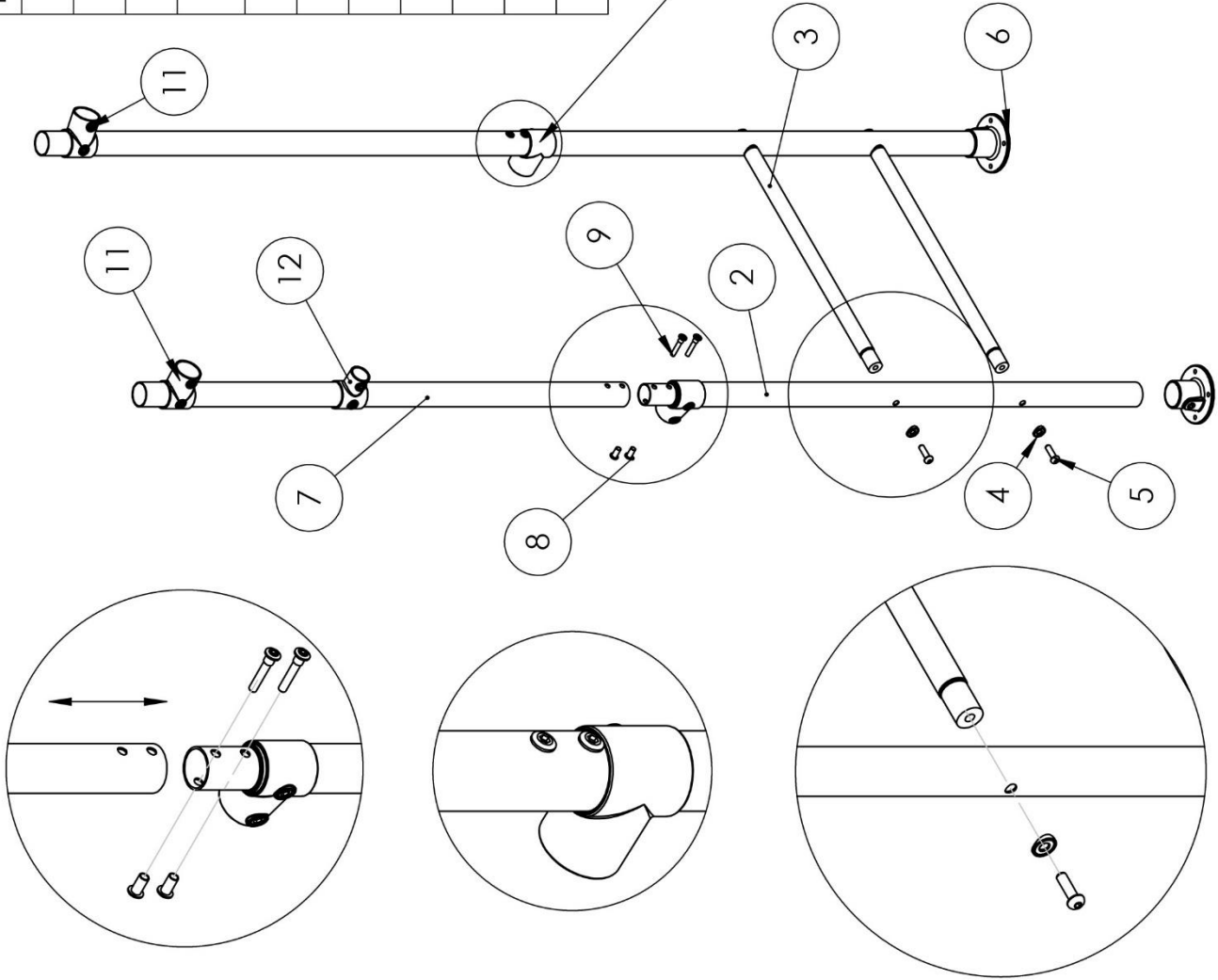
ROCK GRIP ASSEMBLY

ITEM NO.	PART NUMBER	DESCRIPTION	QTY.
1	CP20ZK3	Rung Rail	2
2	DB2R	Monkey Rung	8
3	20MRCW1	M10 Concave Washer	11
4	B1035BH1	M10 x 45 BUTTON HEAD S.S SCREW	10
5	RG1 rev 2		6
6	B1060BH2	M10 x 60 SS BH Bolt	6
7	CP20ZK1H	Rung rail LH male with hole for part 10	1
8	CP20ZK1	Rung rail male RH	1
9	CP20ZK2H	Rung rail LH female with hole for part 10	1
10	CP20ZK2	Rung Rail	1
11	BC1040F	M10 Chicago Female	8
12	BC1040M	M10 Chicago Male	8
13	CF20CB2	Cross Brace 1	2
14	Rung Expanding Pinrail		2
15	20MRCW	M10 Concave Washer	2
16	B1035BH1	M10 x35 S/S Bolt	2
17	101-48 Tee	48 Short tee	4
18	101-4234 Tee	42/48 Short tee	2



ASSEMBLE MONKEY RUNG USING BOX MR1800KIT AND PARTS FROM BOX TA3 INSTALL CLAMPS TO LD1 LADDER IN NEXT STEP

ITEM NO.	PART NUMBER	DESCRIPTION	QTY.
2	SN2048LBUM	Ladder bottom Male	2
3	DB2R	Monkey Rung	2
4	20MRCW1	M10 Concave Washer	4
5	B1045BH1	M10 x 45 BUTTON HEAD S.S SCREW	4
6	G131-D	base plate	2
7	LDC	Ladder Bottom Upright	2
8	BC1040F	M10 Chicago Female	4
9	BC1040M	M10 Chicago Male	4
10	GAWASHER	WASHER	1
11	101-48 Tee	48 Short tee	4
12	101-4234 Tee	42/48 Short tee	1

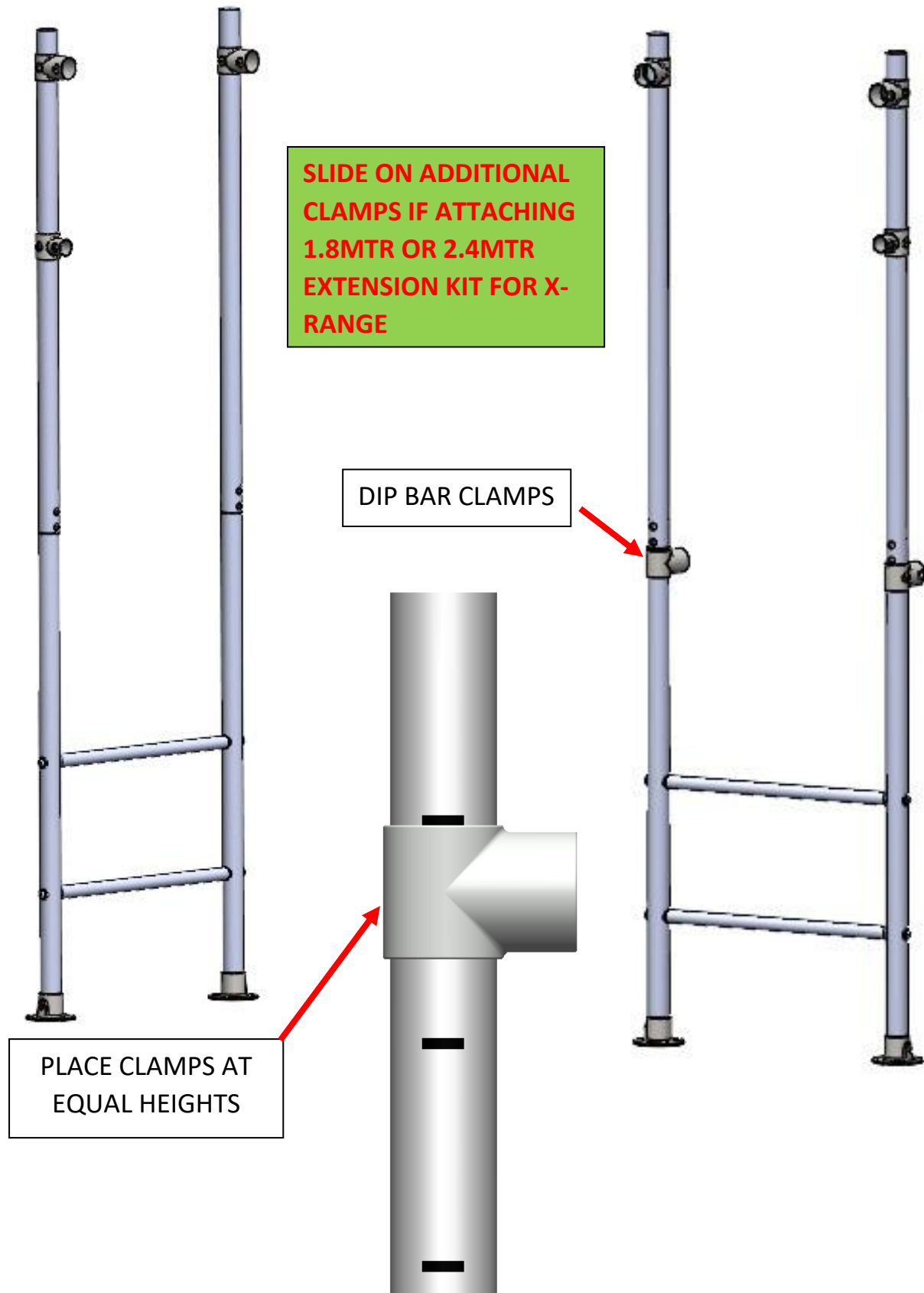


IMPORTANT !!
ASSEMBLE DIP BAR CLAMPS ON ONE LADDER ONLY.
LEAVE LOOSE AT THIS STAGE

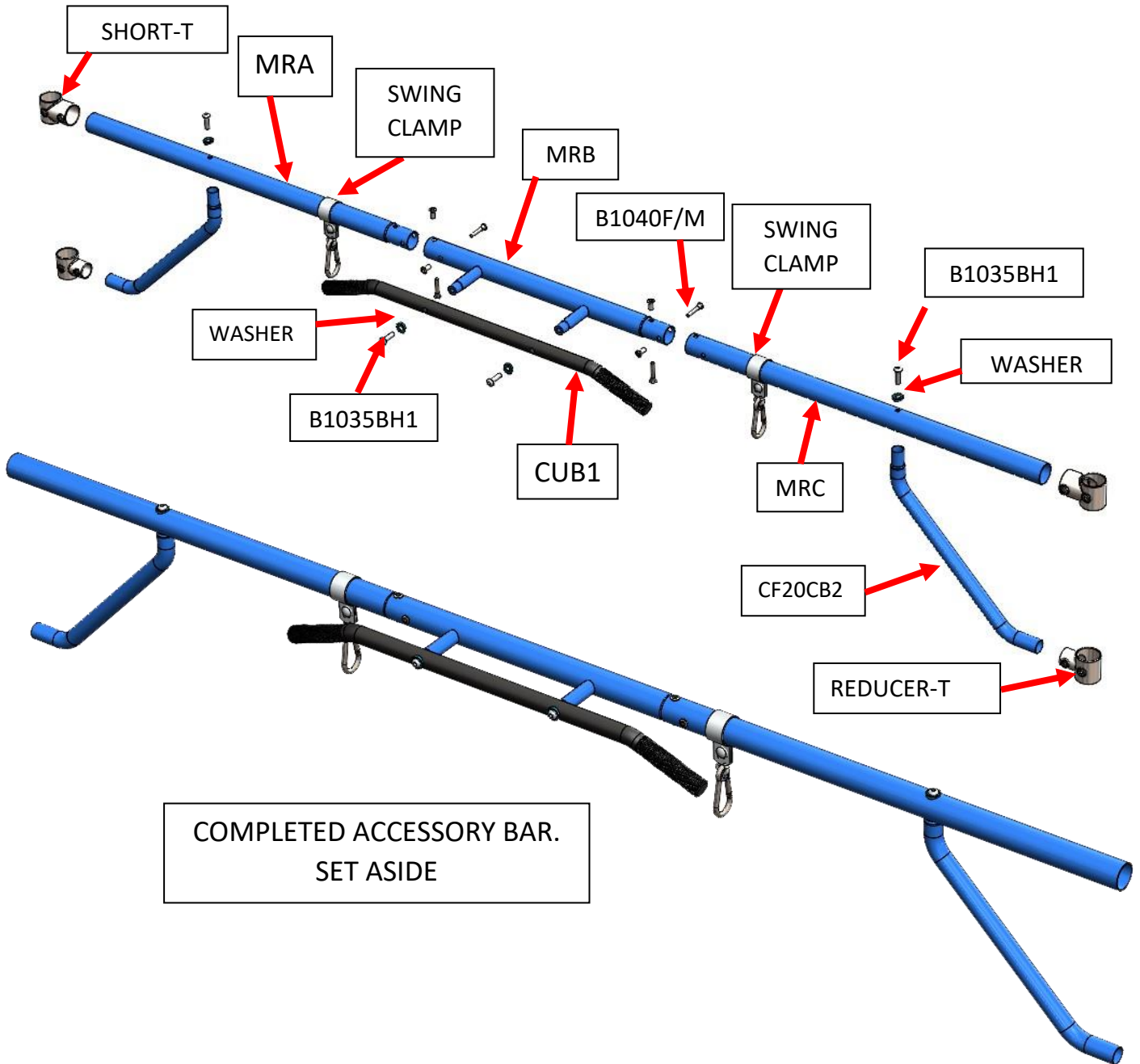
BOX : LD1
STEP 2
ASSEMBLE 1 X LADDER AS SHOWN USING CLAMPS
11 & 12 FROM PREVIOUS STEP . ASSEMBLE 2 X DIP BAR
11 CLAMPS ON ONE LADDER ONLY ! DO NOT TIGHTEN

REMOVE LADDERS FROM BOX 1 AND BOX 2

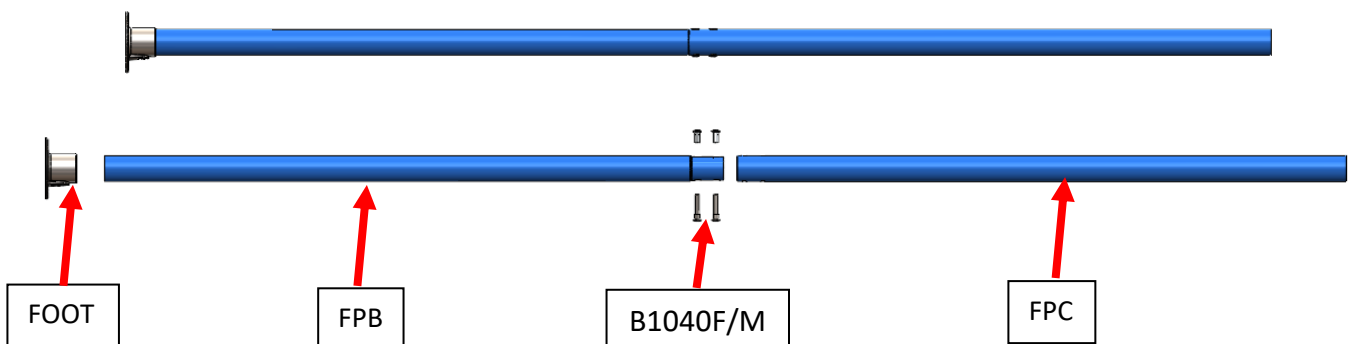
- INSTALL SHORT TEES FOR DIP BARS (LEAVE LOOSE) ONE SIDE.
- INSTALL SHORT TEE CLAMPS AT EQUAL HEIGHTS FOR MONKEY BARS. DO NOT FULLY TIGHTEN UNTIL NEXT STEP.



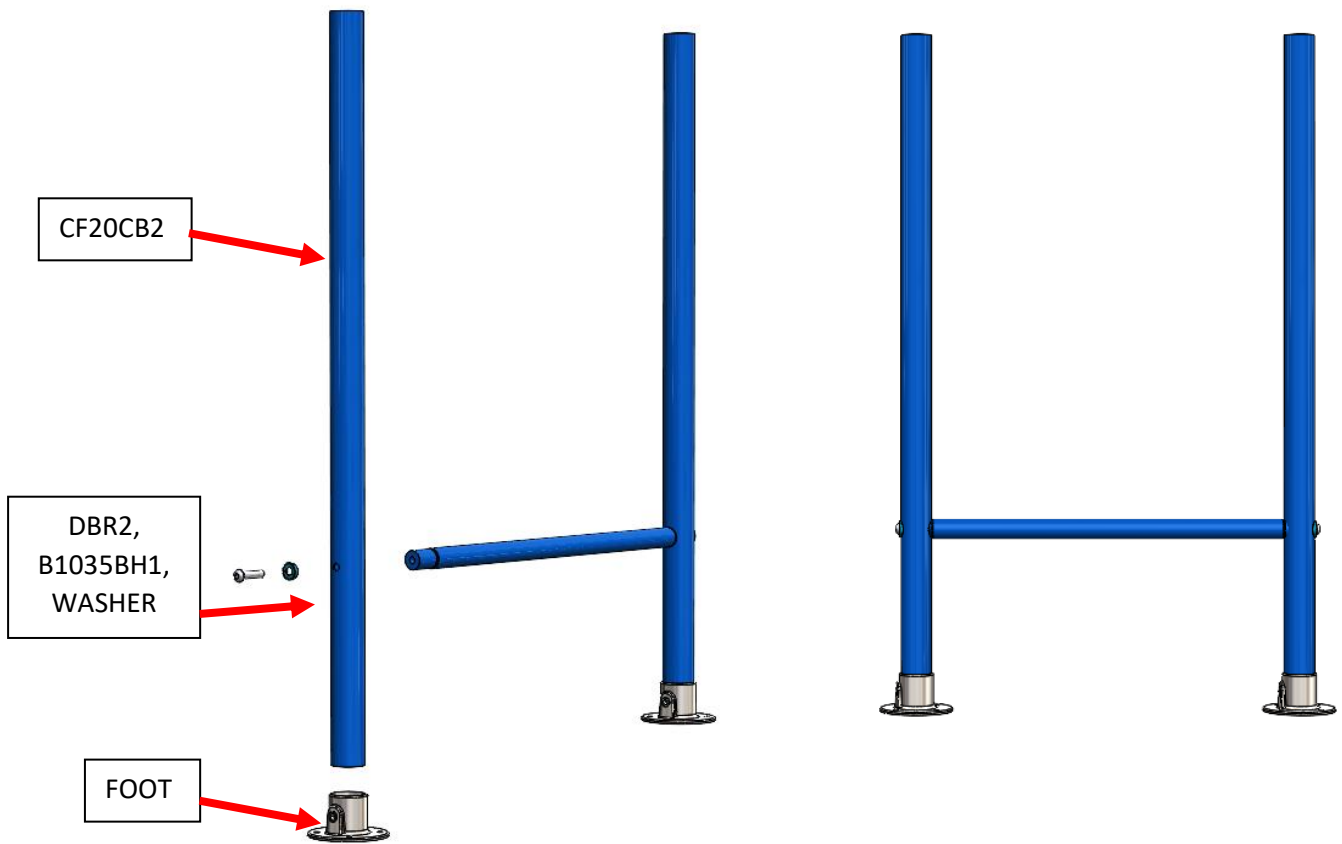
ASSEMBLE ACCESSORY BAR AS SHOWN. SET T-CLAMPS ASIDE FOR LATER



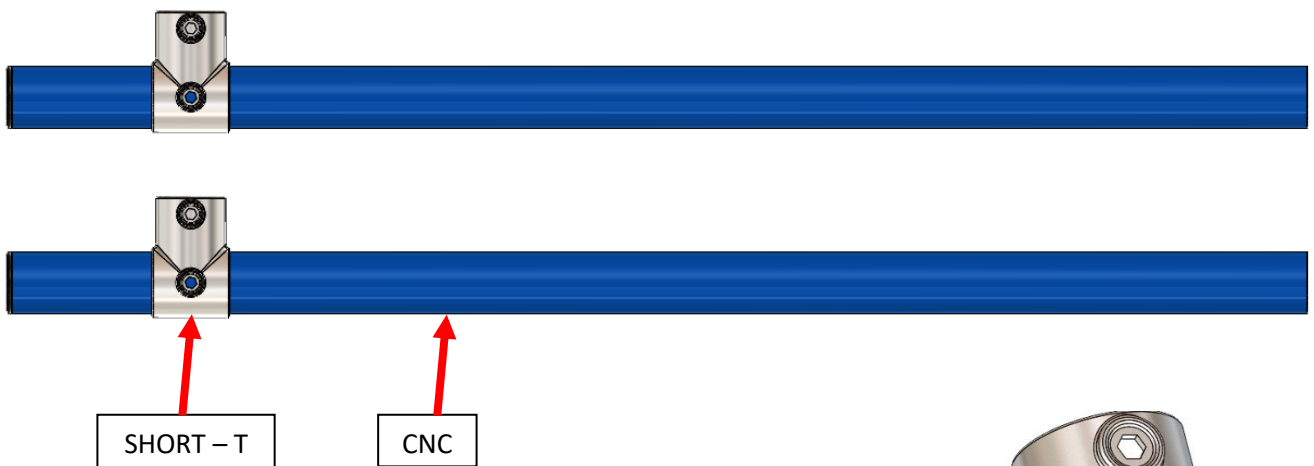
ASSEMBLE FIREMANS POLE AS SHOWN & SET ASIDE.



ASSEMBLE DIP BAR LEGS

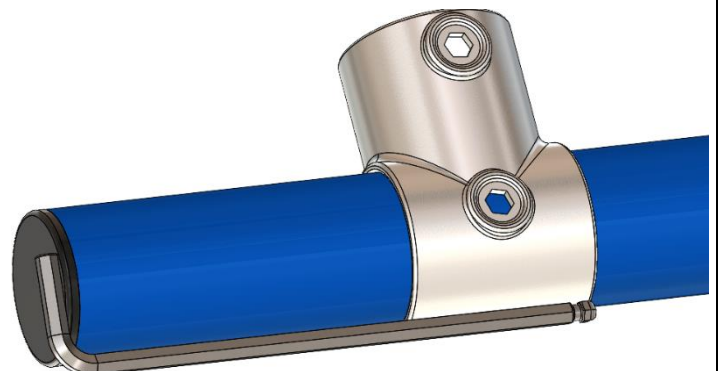


ASSEMBLE DIP BAR TOP RAIL X 2

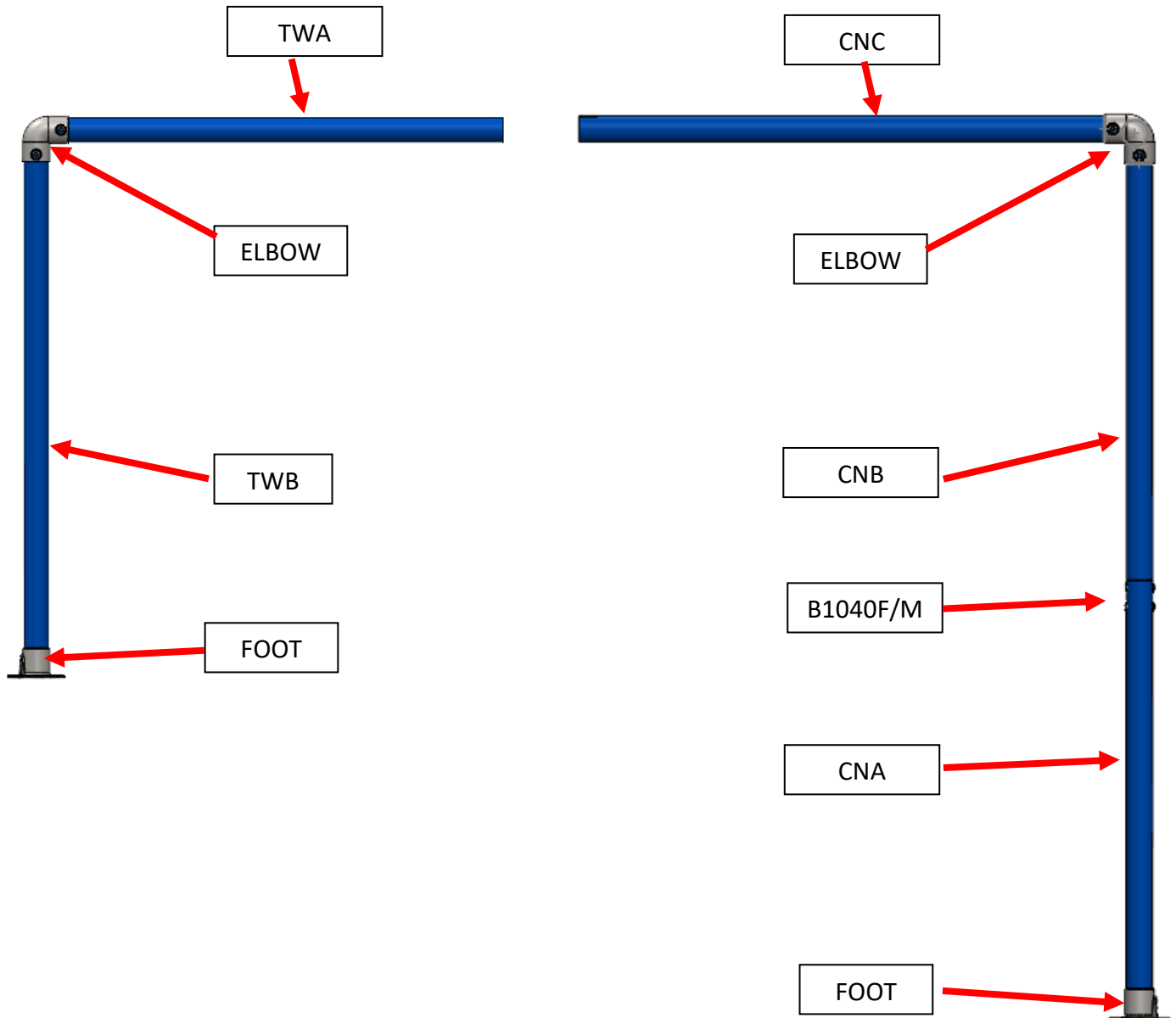


TIP!

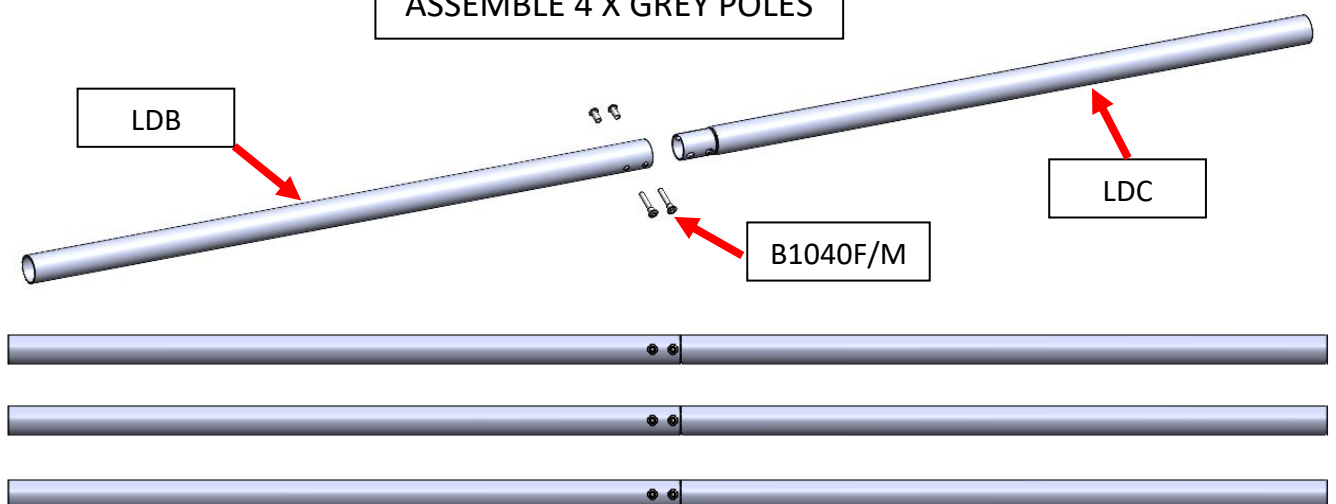
USE 6MM HEX KEY TO SET
CLAMPS AT EQUAL LENGTHS.



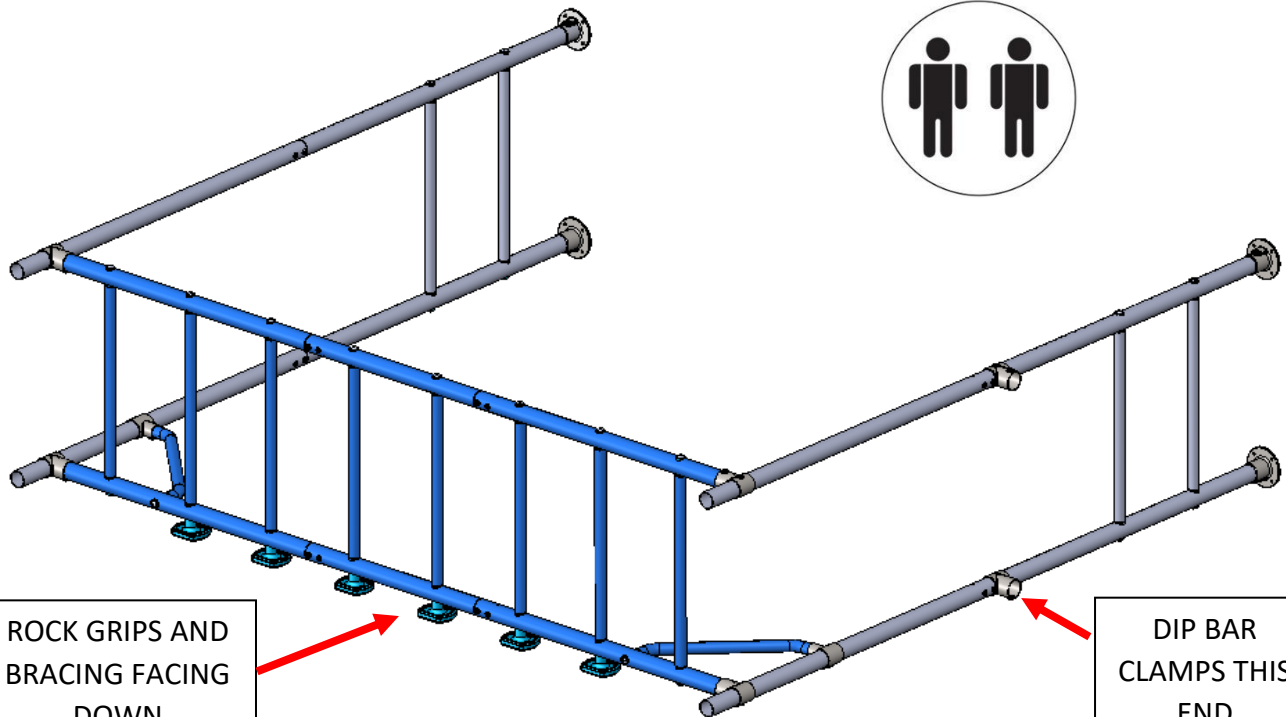
ASSEMBLE TUMBLE & GYMNASTICS BAR



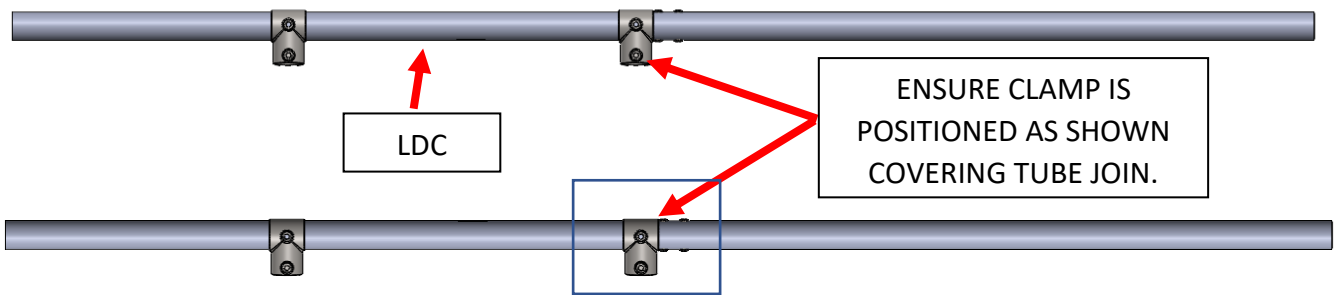
ASSEMBLE 4 X GREY POLES



PLACE LADDERS ON SIDE AND INSERT MONKEY RUNGS INTO CLAMPS BRACES. ENSURE THAT RED TABS ARE NOT SHOWING BEFORE TIGHTENING.



SLIDE SHORT TEE'S ALONG TUBE #LDC UP TO BOLT CONNECTION COVERING JOIN AND TIGHTEN.



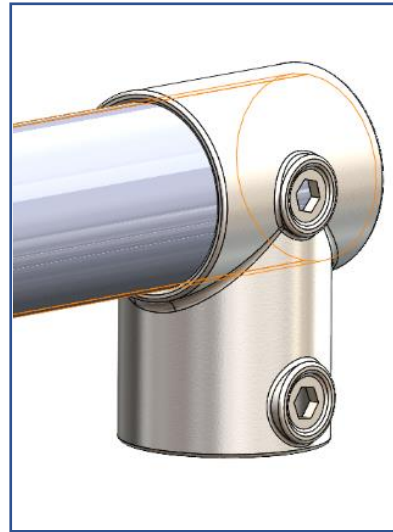
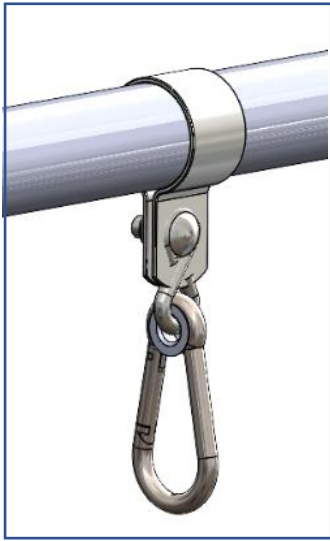
CORRECT COVERING JOIN



INCORRECT CLAMP WRONG SIDE



SLIDE ON 6 X SWING CLAMPS AND 3 X SHORT TEE'S ONTO TOP RAIL.



LEFT HAND SIDE. SLIDE
DOWN 1 X SHORT-TEE
1 X REDUCER-TEE AND
1 X SHORT-TEE

RIGHT HAND SIDE
SLIDE DOWN 1 X
REDUCER-TEE X 1
SHORT-TEE

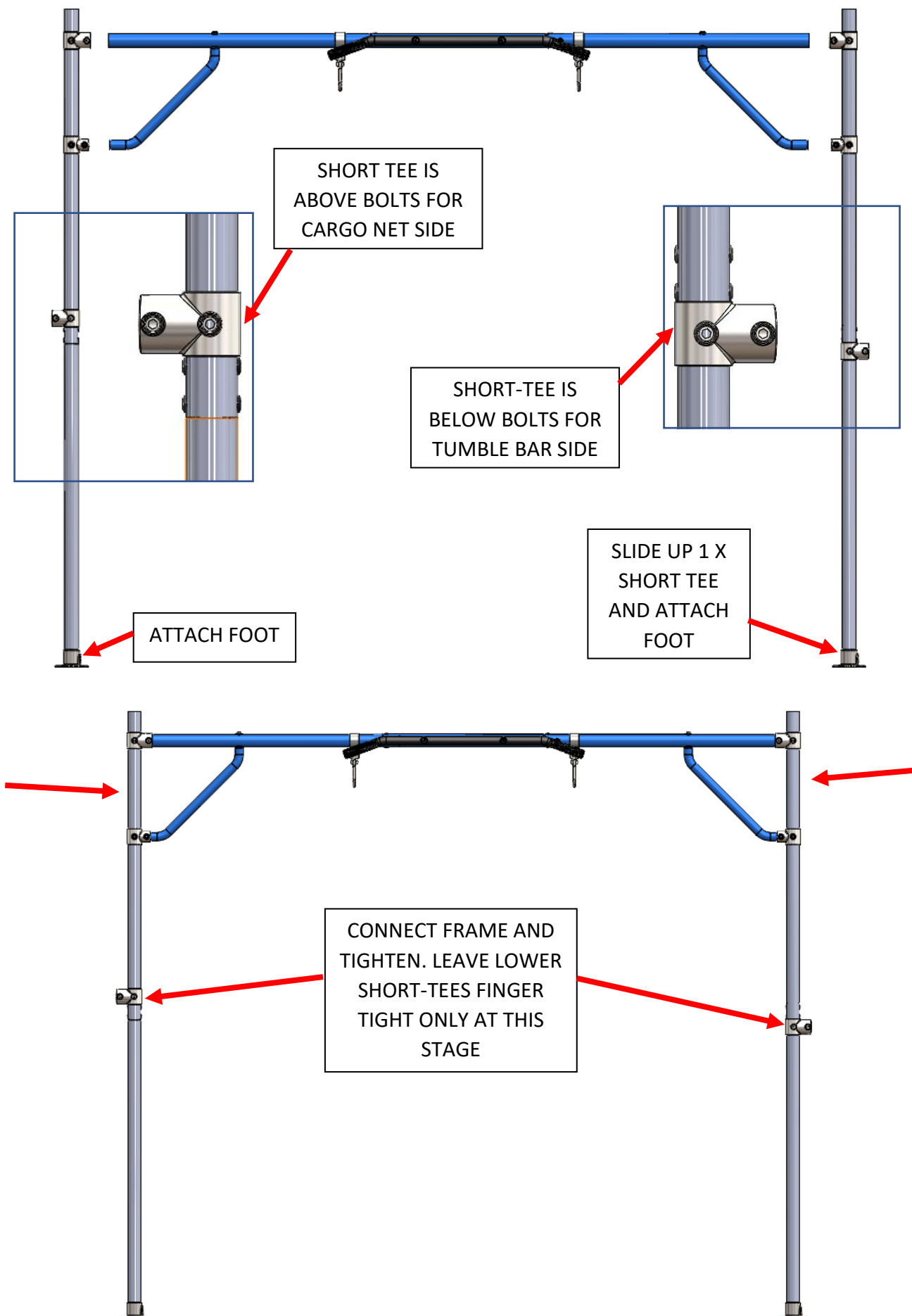
SHORT TEE IS
ABOVE BOLTS FOR
CARGO NET SIDE

SHORT-TEE IS
BELOW BOLTS FOR
TUMBLE BAR SIDE

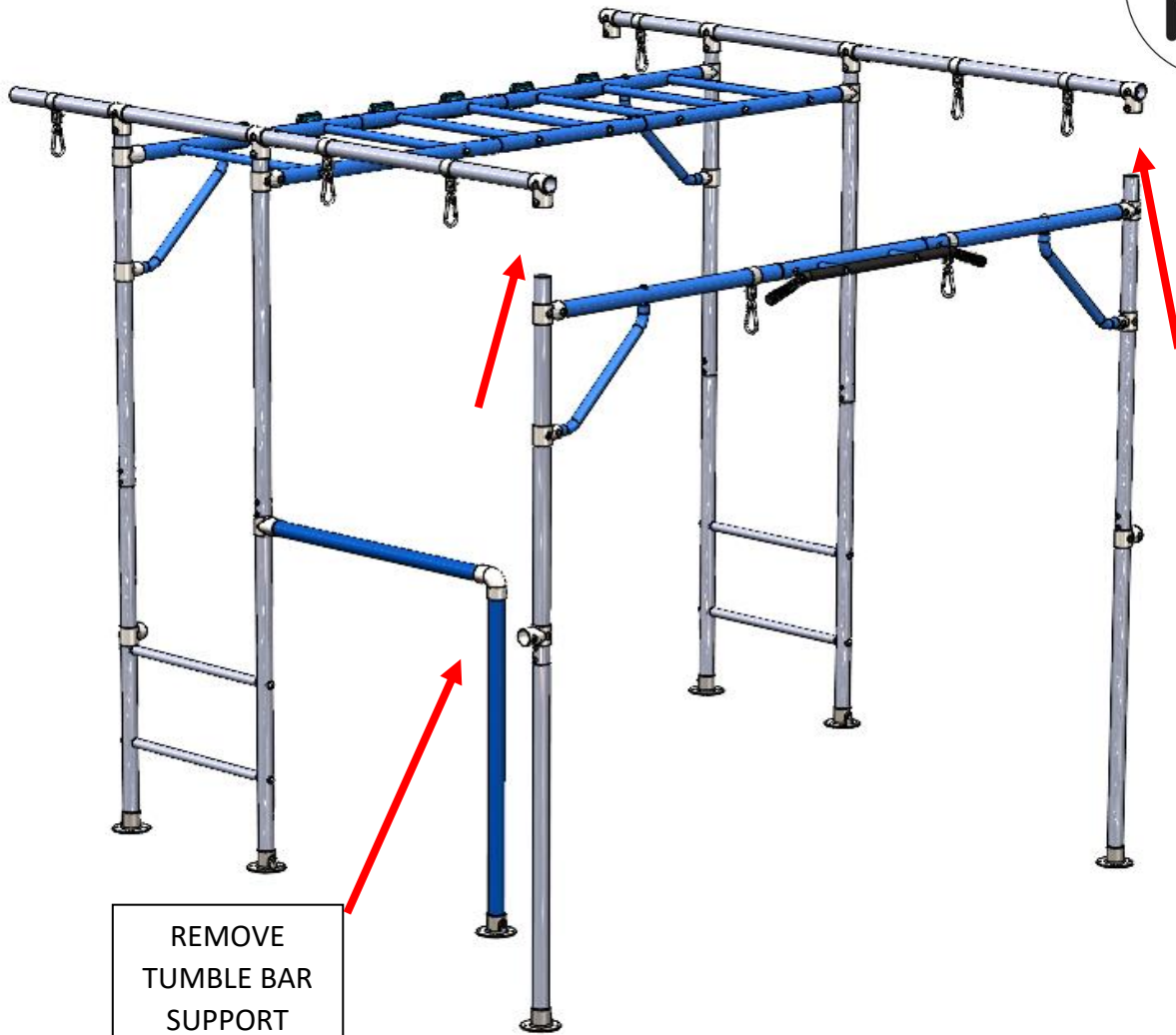
ATTACH FOOT

SLIDE UP 1 X
SHORT TEE
AND ATTACH
FOOT

CONNECT FRAME AND
TIGHTEN. LEAVE LOWER
SHORT-TEES FINGER
TIGHT ONLY AT THIS
STAGE

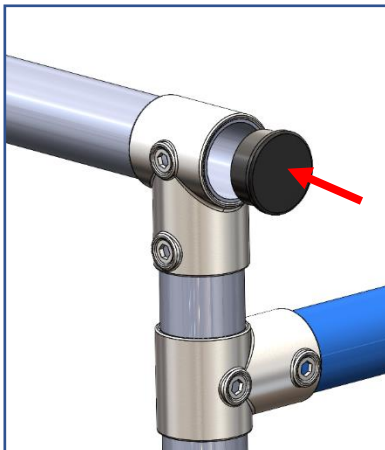


INSERT LEGS INTO SHORT-TEES AND LIGHTLY TIGHTEN.

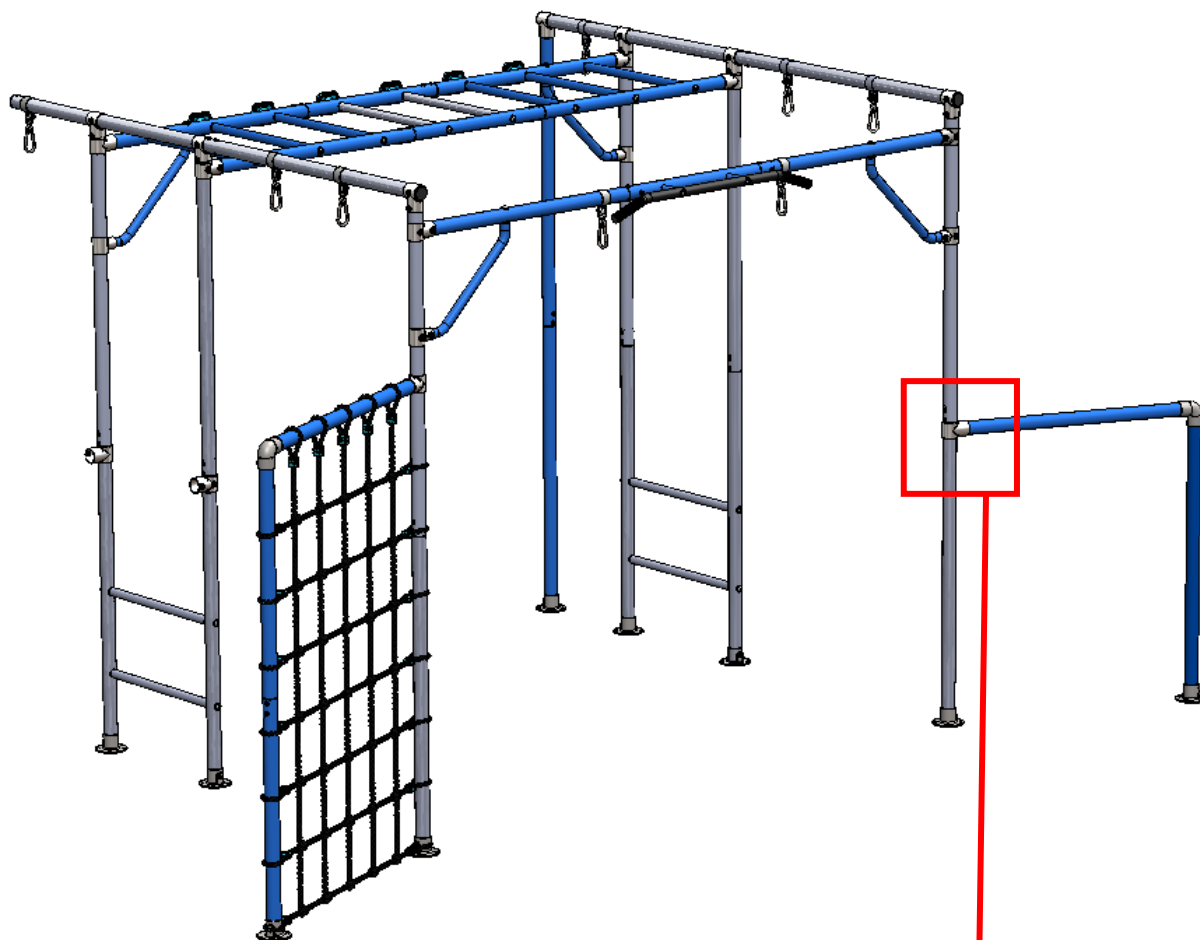


REMOVE
TUMBLE BAR
SUPPORT

INSTALL 4 X
END CAPS
AND TIGHTEN
SHORT-TEE

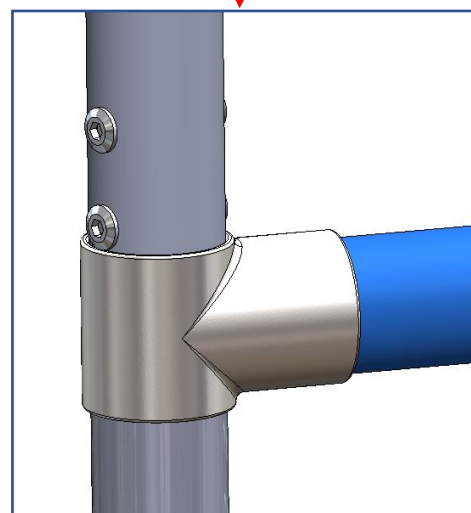
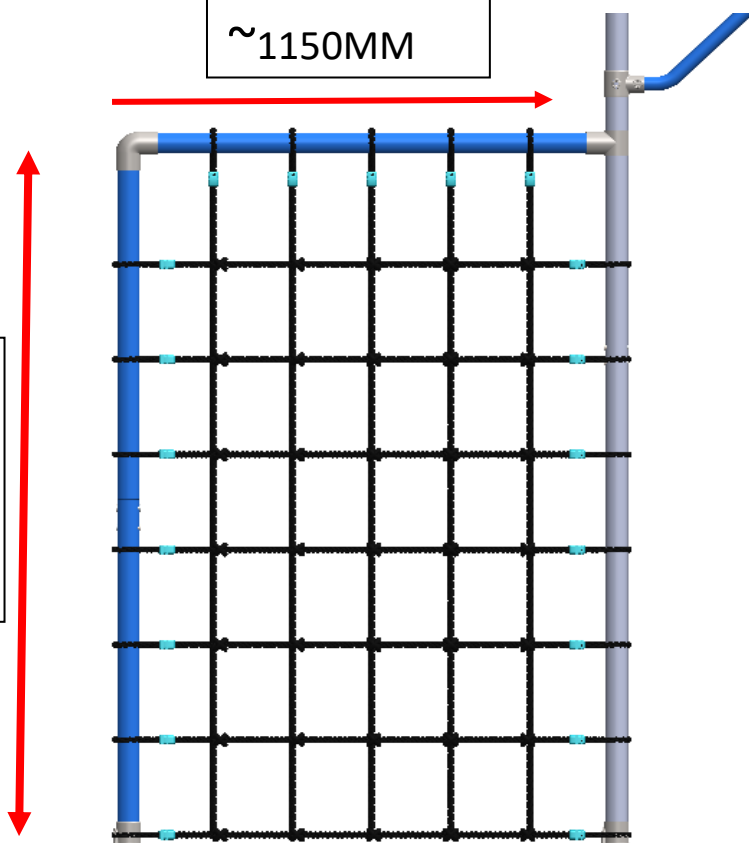


INSTALL CARGO NET AND TUMBLE BAR



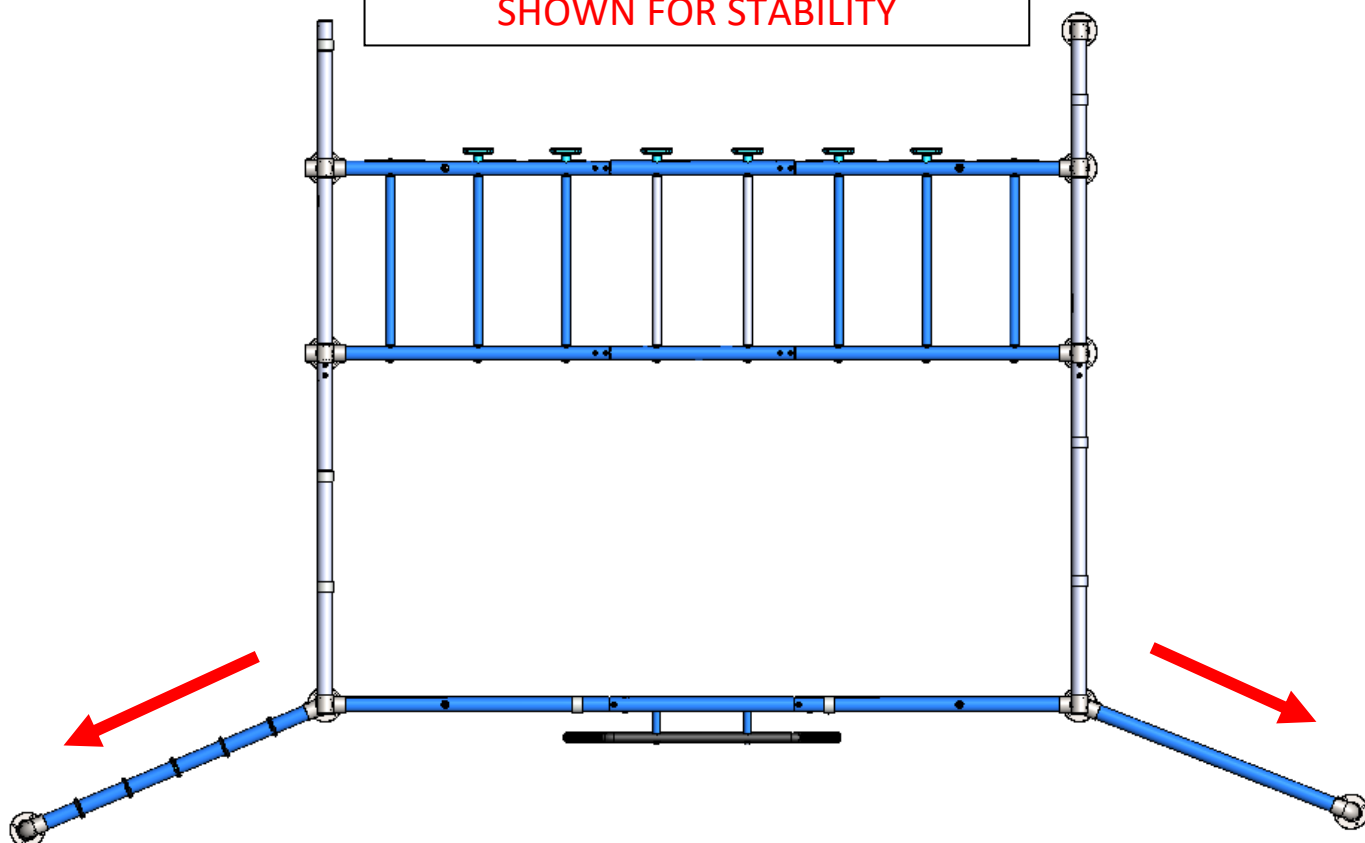
~1150MM

~ 1650MM



PUSH UP CLAMP TO BOLT.

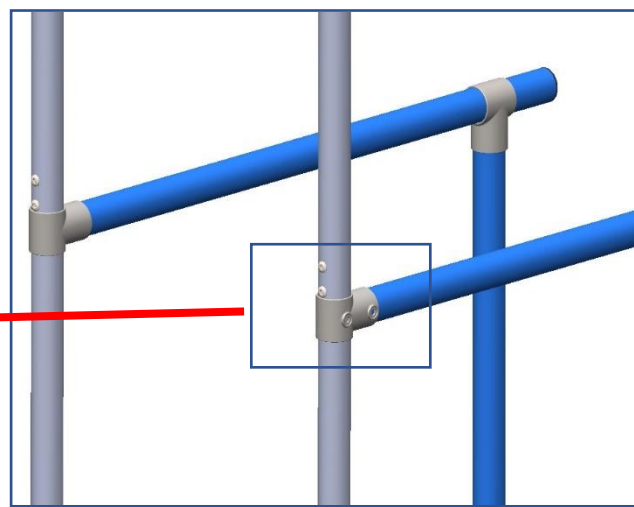
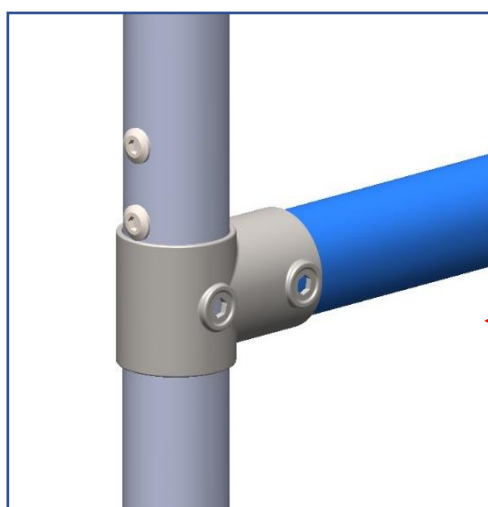
IMPORTANT! ORIENTATE SUPPORT
BARS BETWEEN ~15-45 DEG AS
SHOWN FOR STABILITY



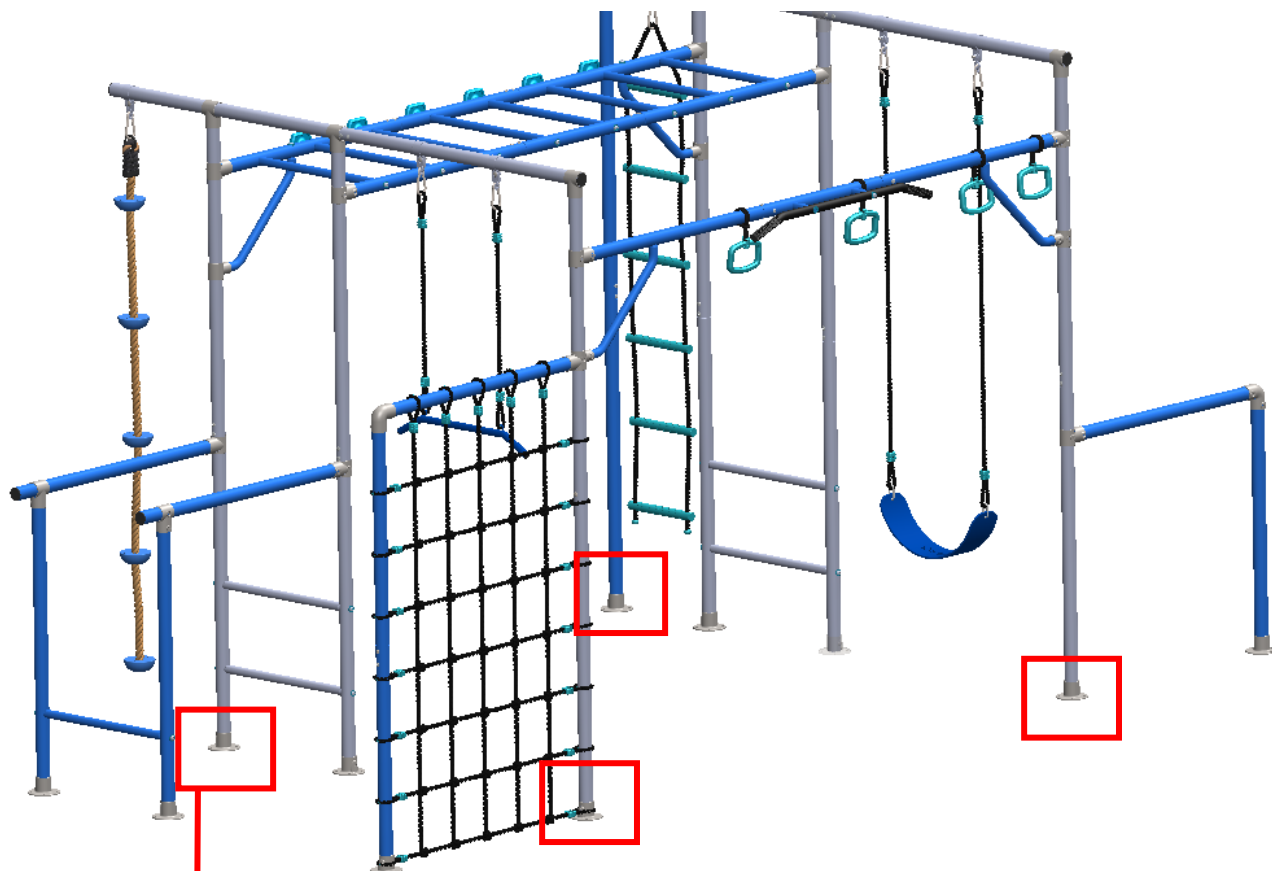
INSERT BLUE SUPPORT



SLIDE DIP BAR CLAMPS UPWARDS TO HIGHEST
POSITION CONTACTING BOLT AS SHOWN AND
COVERING JOINT. POSITION DIPBARS AND TIGHTEN

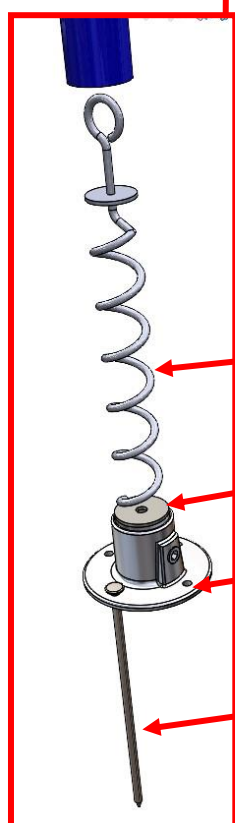


IMPORTANT! ENSURE GROUND IS LEVEL. USE SPIRAL ANCHORS ON 4 OUTSIDE LEGS TO SECURE FRAME AND INSERT 1 X GROUND SPIKE IN EACH FOOT BEFORE USE. SPIRAL ANCHORS ONLY REQUIRED IN SOFT SOIL CONDITIONS. IF SOIL IS HARD THEY WILL BREAK AND ARE NOT REQUIRED.



SPIRAL ANCHOR INSTALLATION

- 1: POSITION FRAME.
- 2: KNOCK IN 1 X GROUND SPIKE TO LOCATE FOOT.
- 3: LOOSEN FOOT GRUB SCREW AND LIFT OUT FRAME TO ONE LEG AT A TIME WHILE FOOT STILL IN PLACE.
- 4: SCREW IN SPIRAL ANCHOR (SOFT GROUND)
- 5: REPLACE LEG INTO FOOT AND TIGHTEN GRUB SCREW.



SPIRAL ANCHOR

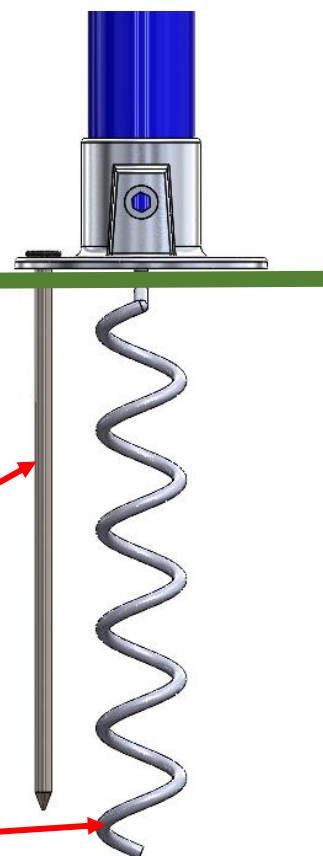
WASHER

BASE PLATE

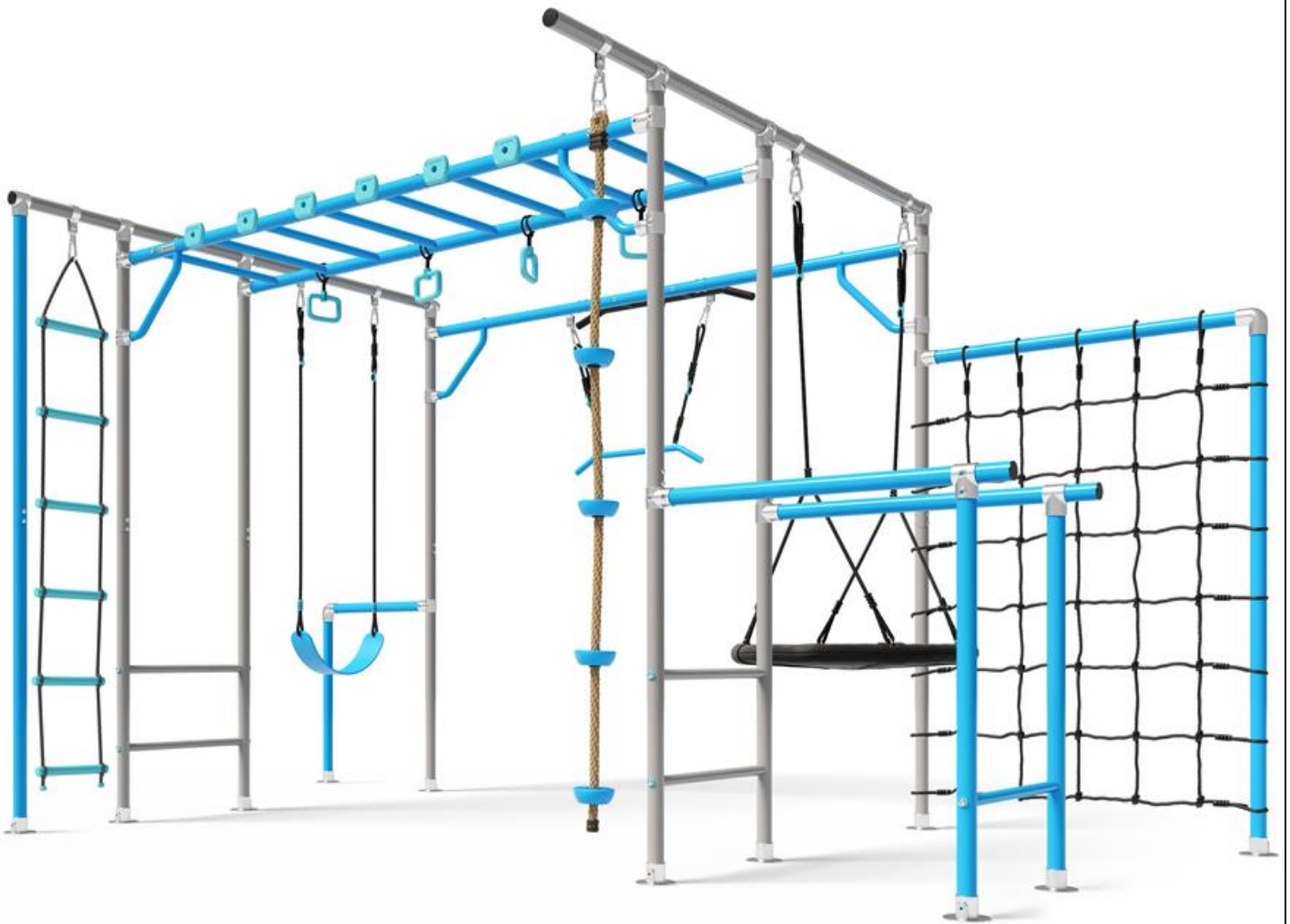
SPIKE X 1

1 X GROUND
SPIKE PER FOOT.

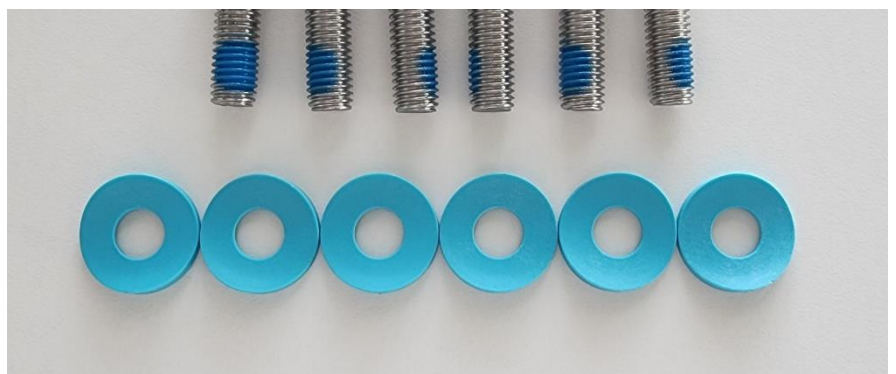
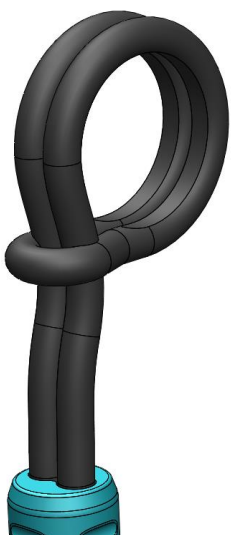
SPIRAL ANCHORS
FOR SOFT SOIL.
NOT REQUIRED
FOR HARD SOIL .



ATTACH ALL ACCESSORIES AS SHOWN



TYPICAL MONKEY RING
LOOP ATTACHMENT.
LOOP OVER AND UNDER
ANY BAR POSITION.



SPARE BOLTS AND WASHERS. CAN BE USED IN
REPLACEMENT OF ROCKGRIPS. KEEP IN SAFE



FINAL STEP.

**START AT ONE CORNER OF
THE FRAME AND DOUBLE
CHECK ALL BOLTS ARE TIGHT.
SMALL MOVEMENT IN FRAME
IS NORMAL.**

CONGRATULATIONS!

YOU HAVE ASSEMBLED YOUR GROWPLAY MONKEY BAR!

MAINTENANCE INFORMATION

This product was manufactured using quality materials and crafted to provide you and your family with many years of enjoyment and exercise. Proper maintenance care will help to prolong the life and reduce the possibility of injury. The following guidelines should be followed.

- Tighten all hardware at the beginning of each play season.
- Check all protective coverings on bolts, pipes, edges, and corners. Replace if they are loose, cracked, or missing.
- Check all moving parts including swing seats, ropes, cables and chains for wear, rust, or other deterioration. Replace as needed.
- Check metal parts for rust. If found, sand and repaint using a nonlead-based paint.
- Rake and check depth of loose fill protective surfacing materials to prevent compaction and to maintain appropriate depth. Replace as necessary.
- Twice a month during play season: Tighten all hardware, check all protective coverings on bolts, pipes, edges, and corners. Replace if they are loose, cracked, or missing. Rake and check depth of loose fill protective surfacing materials to prevent compaction and to maintain appropriate depth. Replace as necessary.
- Once a month during play season: Lubricate all metallic moving parts per manufacturer's instructions. Check all moving parts including swing seats, ropes, cables, and chains for wear, rust, or other deterioration. Replace as needed.
- At the end of each play season or if the temperature drops below 2 Deg C, remove plastic swing seats and other items as specified by the manufacturer and take indoors or do not use. Rake and check depth of loose fill protective surfacing materials to prevent compaction and to maintain appropriate depth. Replace as necessary. Owners shall be responsible for maintaining the legibility of the warning labels.
- Disposal Instructions — There shall be instructions advising the owner to disassemble and dispose of the playground equipment in such a way that no unreasonable hazards will exist at the time the playground equipment is discarded. If any these conditions exist, this product should be disassembled or otherwise protected from being used until the condition is fixed.



CLICK HERE FOR FULL ASSEMBLY VIDEO INSTRUCTIONS

<https://youtu.be/SzLE9fCtxxk>