

quince&co.

errata

Plain & Simple: 11 knits to wear every day

Pam Allen

Maple **ADDED 7.10.2020**

Page 97 / column 2

Under "Begin short row shaping"

Work 6 rows even in St st with front panels; ~~10 rows have been worked in stockinette, 12~~ 10 rows in each front panel.

Page 97 / column 3

Under "Right front"

Work 7 rows even in St st and half brioche.

Page 99 / column 1

Under "Left front"

Work 7 rows even in St st and half brioche.

Ash **ADDED 4.8.2020**

Page 60 / column 1

Top of page

Next row: (WS) Yo, knit to neck edge; then knit to end, ssk each yo with the st after gap.

~~Break yarn at right armhole edge.~~ Place sts for right shoulder onto waste yarn.

Next row: (RS) With yarn attached at left neck edge, purl to end, ssp each yo with the st after gap.

Break yarn at ~~left armhole edge.~~ Place sts for left shoulder onto waste yarn.

Birch

Page 69 / column 1

Under "Begin yoke"

Next rnd *inc rnd:* K31 (37, 43, 49, 55, 61, 67), pm for new BOR, m1, k31 (37, 43, 49, 55, 61, 67), turn work, with waste yarn, make a slipknot (first sleeve st), place on RH needle and using the backward loop cast on, **CO 48 (52, 56, 60, 64, 68, 72)** more sts for sleeve, turn work, with MC, knit sts cast on for sleeve, k31 (37, 43, 49, 55, 61, 67), m1, k31 (37, 43, 49, 55, 61, 67), turn work, with waste yarn, make a slipknot (first sleeve st), place on RH needle and using the backward loop cast on, **CO 48 (52, 56, 60, 64, 68, 72)** more sts for sleeve, turn work, with MC, knit sts cast on for sleeve, k31 (37, 43, 49, 55, 61, 67) sts to end (2 sts inc'd)—224 (256, 288, 320, 352, 384, 416) sts on needle.

Larch

Page 88 / column 2

Under "Begin shoulder shaping", last sentence

~~Break yarn at neck edge only.~~

Do not break yarn.

continued, next page

Corrections to first print edition of Plain & Simple: 11 knits to wear every day

Pam Allen

Please note: These corrections apply to only the first print version. These corrections are incorporated into the "Quince & Co Plain & Simple ebook".

Chestnut

Page 65 / column 3

Under "Join shoulders"

Place sts held for left and right front onto smaller circ. With RS of pcs tog and attached yarn, using the three-needle bind off, BO all sts for right front with corresponding back sts. With long tail at left armhole edge, rep for left shoulder, then BO rem 22 sts for back neck.

Birch

Page 71

In colorwork Charts A, B, and D, MC and CC should be switched (see right).

In Chart A, stitch 9 of Round 1 should be worked in CC.

Willow

Page 77 / column 3

Page 78 / column 2

Under "Begin gansey patterns" on both pages

Next row: (RS) K1, sl 1, (p2, sl 1) to cable m, work Row 1 of cable panel to next m, sl 1, (p2, sl 1) to eyelet m, work Row 1 of eyelet panel to next m, sl 1, (p2, sl 1) to cable m, work Row 1 of cable panel to next m, sl 1, (p2, sl 1) to last st, k1.

Under both instances of yarnover short rows, page 78

Do not count yarnovers as stitches; as short rows approach cables, work cable stitches in stockinette stitch.

Aspen

Page 82 / column 3

Under "Yoke pattern"

Rnds 10-14: Rep Rnds 4-8.

Chart A

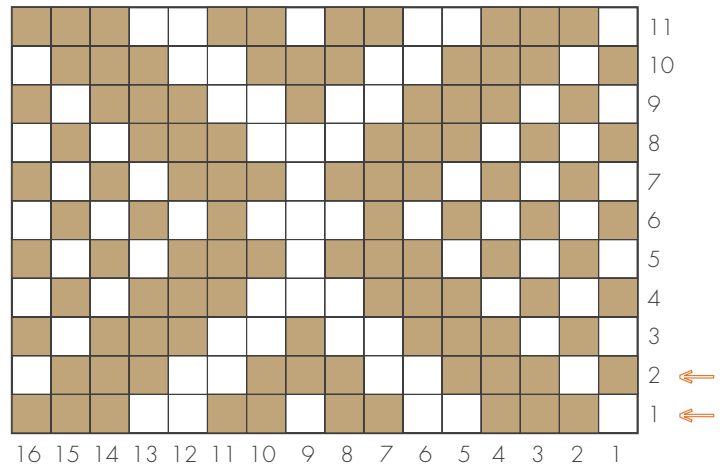


Chart B

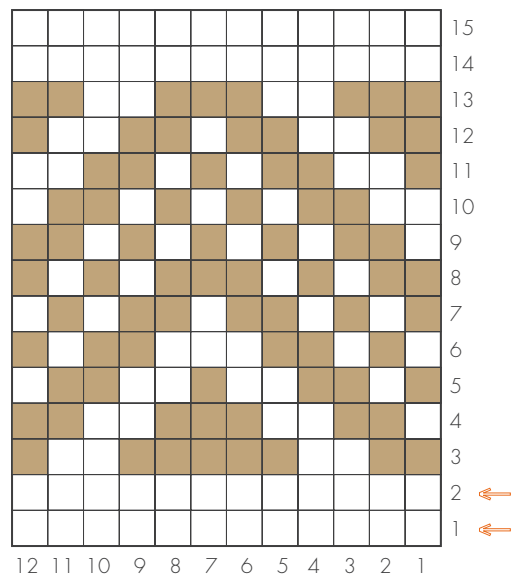


Chart D

