

Corrections to first print edition of Plain & Simple: 11 knits to wear every day

Pam Allen

Please note: These corrections apply to only the first print version. These corrections are incorporated into the "Quince & Co Plain & Simple ebook".

Chestnut

Page 65 / column 3

Under "Join shoulders"

Place sts held for left and right front onto smaller circ. With RS of pcs tog and attached yarn, using the three-needle bind off, BO all sts for right front with corresponding back sts. With long tail at left armhole edge, rep for left shoulder, then BO rem 22 sts for back neck.

Birch

Page 71

In colorwork Charts A, B, and D, MC and CC should be switched (see right).

In Chart A, stitch 9 of Round 1 should be worked in CC.

Willow

Page 77 / column 3

Page 78 / column 2

Under "Begin gansey patterns" on both pages

Next row: (RS) K1, sl 1, (p2, sl 1) to cable m, work Row 1 of cable panel to next m, sl 1, (p2, sl 1) to eyelet m, work Row 1 of eyelet panel to next m, sl 1, (p2, sl 1) to cable m, work Row 1 of cable panel to next m, sl 1, (p2, sl 1) to last st, k1.

Under both instances of yarnover short rows, page 78

Do not count yarnovers as stitches; as short rows approach cables, work cable stitches in stockinette stitch.

Aspen

Page 82 / column 3

Under "Yoke pattern"

Rnds 10-14: Rep Rnds 4-8.

Chart A

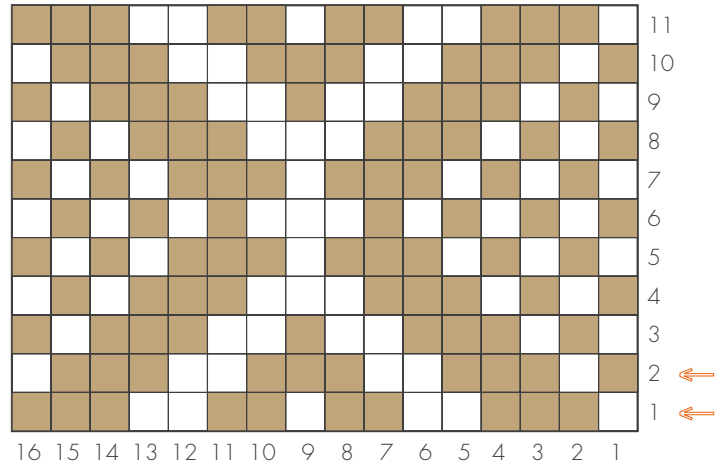


Chart B

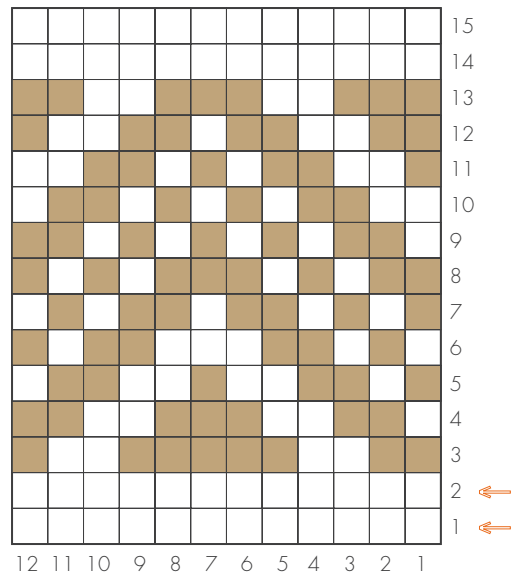


Chart D

