



quince&co.

errata

Estelle Cardigan

Melissa LaBarre

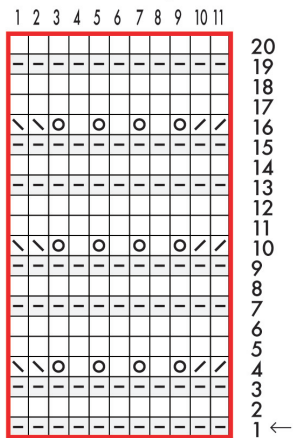
Key

- knit
- purl
- k2tog
- yo
- ssk
- pattern repeat

Key

- knit on RS, purl on WS
- knit on WS, purl on RS
- k2tog
- yo
- ssk
- pattern repeat

Feather and Fan (worked in the round)



Feather and Fan (worked flat)

