



**ARCTIC TUB**

## User Manual Arctic Tub



CE **RoHS** FC  **IPX4** **IC** 



**ARCTIC TUB**

## User Manual Arctic Tub

### TABLE OF CONTENTS

1. Warnings	Page 3
2. Getting to know the device	
2.1 Device overview	Page 4
2.2 Control panel	Page 5-6
3. Setting up the Arctic Tub	
Commissioning the Arctic Tub complete set	Page 7
4. How to use the Arctic Tub	
4.1 Operate the machine via the control panel	Page 8
4.2 Setting the water temperature and precooling	Page 9
4.3 Control by app	Page 10
4.4 Creating routines	Page 10
5. Introduction of error codes and simple solutions	Page 11-12
6. Device maintenance	Page 13
7. Tips	Page 14-15



**ARCTIC TUB**

## User Manual Arctic Tub

### 1. WARNINGS

***Congratulations on the Purchase of an Arctic Tub. Please read this manual carefully to ensure a proper installation and operation guarantee. Thank you!***

#### **WARNINGS**

ELECTRICITY IS VERY DANGEROUS, TO AVOID ACCIDENTS, PLEASE PAY ATTENTION TO THE SAFETY INSTRUCTIONS.

1. PLEASE ENSURE THE POWER SUPPLY IS SUITABLE FOR THE MACHINE BEFORE USE.
2. PLEASE ENSURE THAT THE SOCKET OUTLET IS PROPERLY EARTHED. THE USE OF A WATERPROOF SOCKET IS REQUIRED IF THIS MACHINE IS INSTALLED OUTDOORS.
3. PLEASE REMEMBER TO CHECK THE RCD/GFCI SWITCH AT LEAST ONCE A WEEK. IF THERE ARE ANY PROBLEMS, THE MACHINE MUST NO LONGER BE USED.
4. PLEASE NEVER PLACE THIS MACHINE IN WATER, AND IT MUST NOT BE IMMERSSED IN WATER, ESPECIALLY OUTDOORS. DO NOT USE IT AFTER IMMERSION. THIS WOULD BE VERY DANGEROUS. ALSO DO NOT SPRAY THE MACHINE WITH WATER. IT IS BEST TO HAVE A SHADE ON THE TOP IN THE OPEN.
5. ALTHOUGH THIS APPLIANCE HAS PASSED THE SAFETY TEST, WE NEVER RECOMMEND LEAVING THE APPLIANCE SWITCHED ON DURING A BATH IF YOU ARE NOT SURE THAT THE SOCKET IS PROPERLY EARTHED OR NOT.
6. PLEASE KEEP CHILDREN AWAY FROM THE RUNNING MACHINE, AND KEEP YOUR HAIR, FINGERS AND THE LIKE AWAY FROM THE RUNNING FAN.
7. PLEASE KEEP THE ENVIRONMENT VENTILATED. THE MAXIMUM PERMISSIBLE AMBIENT TEMPERATURE IS NO MORE THAN 45 DEGREES CELSIUS. DO NOT COVER OR BLOCK THE AIR INLET AND/OR OUTLET WHEN IN USE. LEAVE ENOUGH FREE SPACE AROUND THE MACHINE.
8. PLEASE EMPTY THE WATER AFTER EACH BATH IF THE AMBIENT TEMPERATURE IS LESS THAN 3 DEGREES CELSIUS OTHERWISE THE WATER MAY FREEZE, CAUSING THE APPLIANCE TO EXPLODE.



**ARCTIC TUB**

## User Manual Arctic Tub

### 2. GETTING TO KNOW THE DEVICE

#### 2.1 Device Overview



1. Carrying handles: For carrying the machine.
2. Control panel: For displaying information and controlling the machine.
3. RCD: Check the residual current circuit breaker **BEFORE EACH BATH**.
4. Water strainer with filter element inside: to prevent other things from damaging the machines' water circuit.
5. Pull handle: Extendable for pulling the machine.
6. Water hoses with quick couplings: Connect and circulate water between the machine and the bathtub or pool.
7. Mains cable: Connecting to the power supply via a socket.
8. Cooling fan: To extract heat from the water.
9. Perforated air inlet: For feeding cool air into the machine.
10. Cartridge filter element
11. Water outlet: Direct the machine's water into the bathtub or pool.
12. Water inlet: Direct the water from the bathtub or pool into the machine.



**ARCTIC TUB**

## User Manual Arctic Tub

### 2.2 CONTROL PANEL



1. **ON/OFF button:**  
Press and hold the button for 2 seconds to start or stop the cooling system.
2. **MODE button:**  
Press and hold the button for 5 seconds to change the temperature units C and F.
3. **SETTING button:**  
Click on it once to enter the temperature setting.  
Click once to confirm the parameter setting and return.
4. **W-button:**  
Press and hold the button for 5-10 seconds to cancel and set up the APP connection.



**ARCTIC TUB**

## User Manual Arctic Tub

### 2.2 CONTROL PANEL

5. UP button:  
Click or hold this touch button to increase the setting values in setting mode.
6. DOWN button:  
Click or hold down this touch button to reduce the setting values in setting mode.  
Press and hold the UP and DOWN buttons simultaneously for 5 seconds to lock or unlock the control panel.
7. SYSTEM information:  
To display the current operating status of the machine.
8. Information on defrosting:  
To display the current working status of defrosting.
9. MODEL information:  
To display the mode of the entire system under ICE BATH, AUTO or CONSTANT
10. Information on the water flow rate: For displaying the water flow rate.
11. WIFI information  
To display the connection status of WIFI.
12. Information on WATER TEMPERATURE  
To display the current/actual temperature of the water at the outlet of the machine
13. Set information on the target temperature: To display the set temperature
14. Information on childproofing:  
To display whether the control panel is locked or not.



**ARCTIC TUB**

## User Manual Arctic Tub

### 3. SETTING UP THE ARCTIC TUB

#### COMMISSIONING ARCTIC TUB COMPLETE SET

Scan the QR code and watch the video on how to set up the Arctic Tub complete set correctly.

**IMPORTANT:** Please watch the video carefully before starting the cooling unit for the first time.



<https://arctic-tub.de/pages/setting-up-the-arctic-tub>



**ARCTIC TUB**

## User Manual Arctic Tub

### 4. HOW TO USE THE ARCTIC TUB

Please note that an error code or version code is shown on the display, mainly when the appliance is used for the first time, after it is switched on or when the vacuum pump is in operation. The vacuum depends on how much air is inside the water circuit.

Please set the temperature according to the following steps and precool the water. The target water temperature can be set to 3-42 degrees.

We strongly recommend setting the target temperature to at least 5 degrees Celsius to save energy costs and extend the product's life.

The water temperature in the tub can be +1.5/-1 degree Celsius depending on the temperature, as the water temperature sensor is not in the tub.

#### 4.1. OPERATING THE MACHINE FROM THE CONTROL PANEL

Please do not use your fingertip to operate the buttons, only your fingerpulp. Otherwise, the buttons may not work correctly.







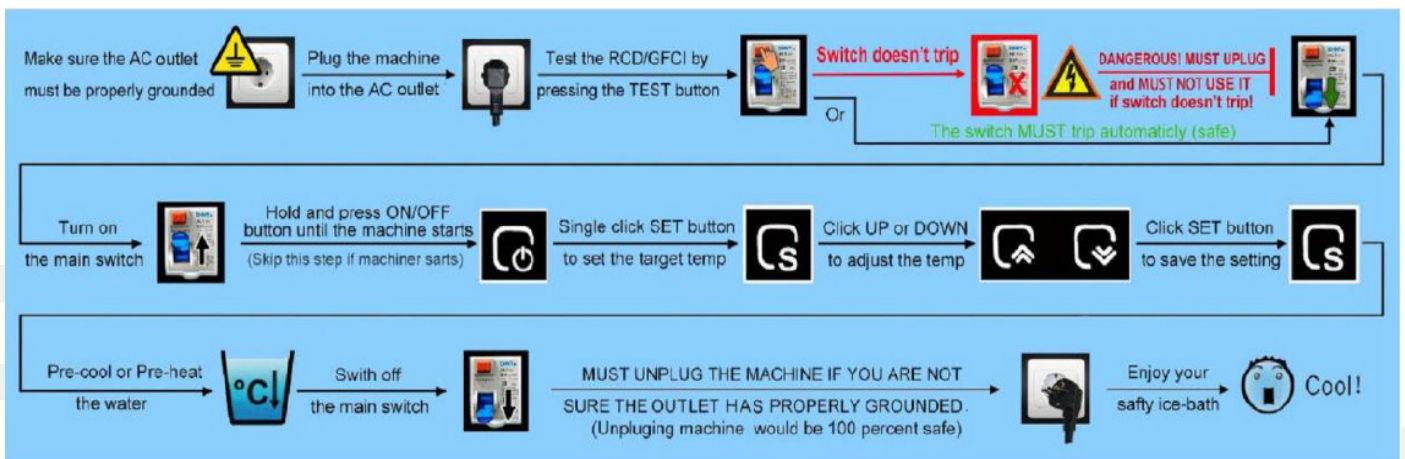
**ARCTIC TUB**

## User Manual Arctic Tub

### 4. HOW TO USE THE ARCTIC TUB

#### 4.2 SETTING THE WATER TEMPERATURE AND PRECOOLING

Please follow the steps below to set the water temperature and enjoy a safe ice bath.





**ARCTIC TUB**

## User Manual Arctic Tub

### 4. HOW TO USE THE ARCTIC TUB

#### 4.3 CONTROL BY APP

Please scan the QR code or copy the link and watch the video on connecting the Arctic Cool cooling unit to the WiFi. Follow the instructions carefully to control the device via the app.



<https://arctic-tub.de/pages/control-by-app>



**ARCTIC TUB**

## User Manual Arctic Tub

### 5. INTRODUCTION OF ERROR CODES AND SIMPLE SOLUTIONS.

**FL/FU: Too much air in the Water circuit**

Check the water hoses, connections, water strainer and external filter again to see any deformation, looseness or air leaks. Click the MODE button to clear this error code and allow the ice bath machine to continue running for several cycles.

**HH: The Water temperature is too high.**

Increase the value of E2 via the APP SETTING or wait until the water temperature is reached or until the water temperature has cooled down naturally if it is too high. Click on the MODE button to delete this error code.

**FU: The Water flow is too low.**

Check the hoses to see if any deformation has occurred if the end of the hose is stuck to the bath wall/fitting, or clean the water strainer and the external filter. Click on the MODE button to delete this error code.

The first time you use it, click the mode button to turn it off until the water flow becomes normal.

**AA: Failure of the Temperature sensor T4, repair or replace the Sensor.**

**PA: Failure of the Temperature sensor T3, repair or replace the Sensor.**

**CH2: Failure of the Temperature sensor T2, repair or replace the Sensor.**

**CH1: Failure of the Temperature sensor T1, repair or replace the Sensor.**

**IN: There is a problem with the Control cable between the Display and the Main board. Set it up again.**

**ICE:** If the temperature is below 0 degrees, open the drain hole to empty the ice water from the machine. Then, hold the UP button for 3 seconds to eliminate the alarm if the temperature is above 3 degrees.



**ARCTIC TUB**

## User Manual Arctic Tub

### 5. INTRODUCTION OF ERROR CODES AND SIMPLE SOLUTIONS.

**FE:                           The Control cable is loose.**

Please open the top cover of the housing to check the control cable.

**Filter:                       „Filter“ flickers on the display**

It doesn't matter if the water flow is normal; turn off the machine for 3 minutes and restart it, or clean the filter or the water circuit if the water flow is abnormal.

**IF THE ERRORS DO NOT DISAPPEAR, PLEASE CONTACT US!**





**ARCTIC TUB**

## User Manual Arctic Tub

### 6. EQUIPMENT MAINTENANCE

- 6.1** Do not spray the machine directly with water for cleaning. Please use a clean, soft cloth to clean the machine's surface.
- 6.2** Please clean the water hoses, the water strainer, and the external filter if the water flow decreases or becomes dirty.
- 6.3** If you set it up outdoors, Please install a waterproof sunshade on the top of the ice bath cooling unit.
- 6.4** Please drain the water entirely before switching off the appliance or storing it at an ambient temperature below 2 °C. Otherwise, the ice may crack your machine.
- 6.5** The water quality should be clean and free from contamination, and the chloride ion content must not be too high. You better be careful if you use bad water. Pollutants such as sulphuric acid and sulfur oxides increase chlorine corrosion. Usually, the pH value should be between 7 and 9; a higher pH value can lead to deposits or even corrosion.
- 6.6** Regular maintenance is required.



**ARCTIC TUB**

## User MAnual Arctic Tub

### 7. TIPS

To make the cooling process more effective:

- 7.1** Please set up the machine in a well-ventilated place; the ambient temperature should be below 45 °C.
- 7.2** Please do not block the water inlet and/or outlet and do not fold or press on the hose, as this would damage your refrigeration machine.
- 7.3** Do not let the fan blow in the direction of your pool when it is in operation.
- 7.4** Before enjoying your ice bath, precool the bath water. The precooling time depends on the amount of water, the thermal insulation of your installation and the ambient temperature.
- 7.5** If the fan is not running, the actual water temperature has dropped to the target temperature you have set. You will see the SET TEMP and WATER TEMPERATURE values on the display of the cooling unit.
- 7.6** Please use the hoses supplied; do not use additional hoses to increase the distance between the machine and the pool.



**ARCTIC TUB**

## User Manual Arctic Tub

### 7. TIPS

- 7.7** If the temperature cannot be set or the machine is not working well, please press and hold the DOWN button for 5 seconds to reset the system.
- 7.8** IMPORTANT: If FU/FE is shown on display and the fan does not run for more than 15 minutes due to a problem with the connection, especially during the first use, please check the connection conditions and the seals of the inlet, outlet, filter and tray connections again. Please read section 8 on troubleshooting below.
- 7.9** TO SAVE YOUR ENERGY COSTS AND EXTEND PRODUCT LIFE. We strongly recommend that you set the target temperature to at least 5 degrees

**THANKS FOR READING THE INSTRUCTIONS; PLEASE KEEP THE INSTRUCTIONS FOR FUTURE REFERENCE!**