

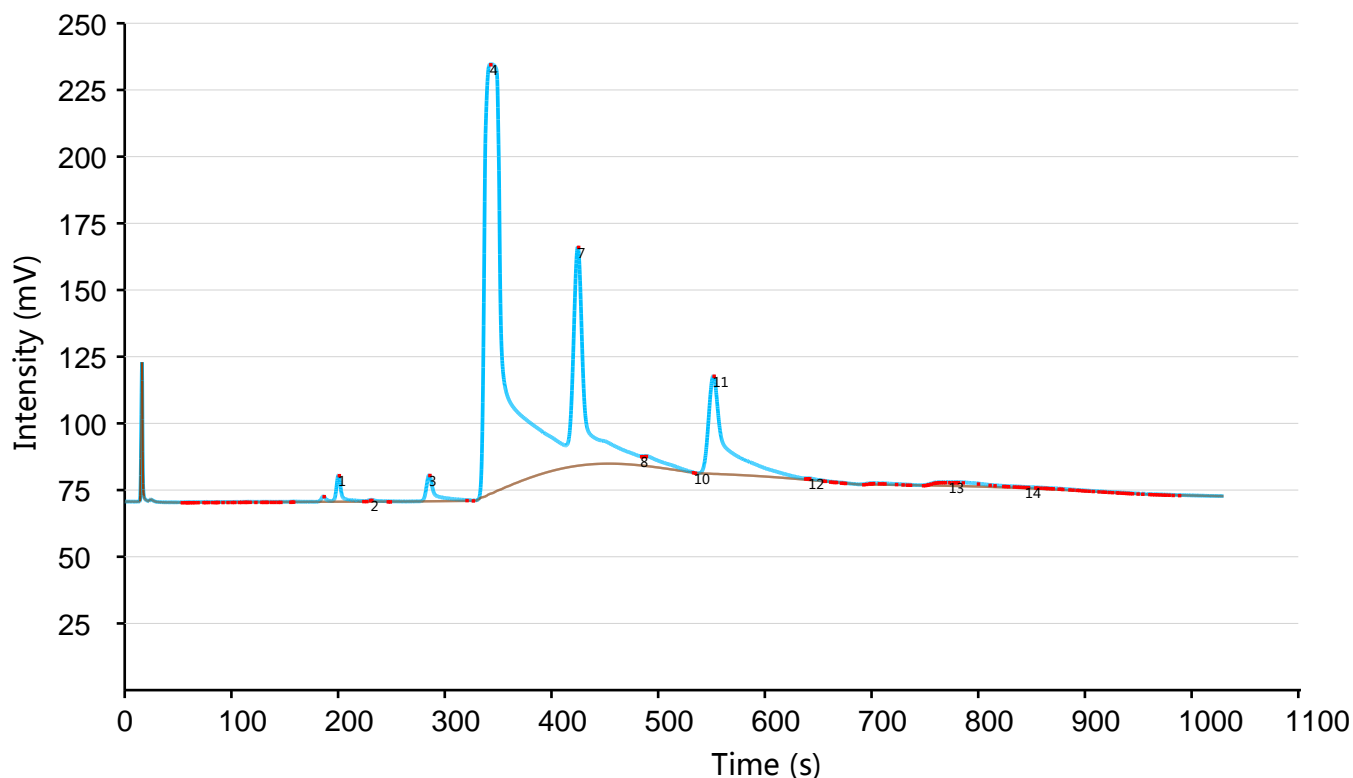
# NovaSoft Test Report

Sample Name: Tril Ultra Woman TBC #2  
 Method: Cannabis  
 Instrument: NovaTest P100  
 Test Location: N/A

Operator:  
 Start Time: 10/26/2021 12:32:18  
 Calibration File: 2110241510.dat

## Programming Parameters

Sampling Time (min): 5.00	Initial Waiting Time (s): 0	Waiting Time (s): 30
Pressure (psi): 7	Low Temperature (°C): 55	Low Holding Time (min): 10
Temp1 (°C): 180	Temp1 Hold Time (min): 3	Ramp Speed 1 (°C/min): 30
Temp2 (°C): 180	Temp2 Hold Time (min): 0	Ramp Speed 2 (°C/min): 35



TVOC Concentration: 573.6 ppb

Peak#	Compound	RT (s)	FWHM (s)	Height	Area	Concentration (ppb)
1	$\alpha$ -Pinene	200.40	4.20	10.22	51.42	2.19
2	Camphene	230.90	4.50	0.73	3.85	0.22
3	$\beta$ -Pinene	285.30	5.90	10.11	88.40	4.15
4	$\beta$ -Myrcene	342.40	15.00	164.37	3727.88	428.17
5	$\delta$ -3-Carene	0.00	0.00	0.00	0.00	0.00

Peak#	Compound	RT (s)	FWHM (s)	Height	Area	Concentration (ppb)
6	$\alpha$ -Terpinene	0.00	0.00	0.00	0.00	0.00
7	Ocimene 1	424.70	8.70	83.78	1166.07	69.98
8	D-Limonene	483.80	0.60	3.58	3.57	0.32
9	p-Cymene	0.00	0.00	0.00	0.00	0.00
10	Ocimene 2	534.20	0.40	0.17	0.13	0.01
11	Eucalyptol	551.70	10.40	37.61	716.06	47.30
12	$\gamma$ -Terpinene	641.30	5.90	0.68	3.67	0.37
13	Terpinolene	772.60	1.20	1.44	1.99	0.18
14	Linalool	844.40	1.10	0.52	0.66	0.01