



iFlow Inc.

# Smart Ultrasonic Water Meter


Hot & Cold Water

NTEP Approved

Read Remotely

## Models:

- 1. Q075 3/4"
- 2. Q100 1"
- 3. Q150 1.5"

1-888-651-1130 

www.iflowinc.com 

2109-C S. Wright St., Santa Ana, CA 92705 

## APPLICATION

The iFlow Ultrasonic water meter W1 is designed for accurate measurement of water consumption in households, apartment buildings and small commercial premises. Why spend time wiring meters for remote reading? It can now be done wirelessly!

### INTEGRATED RADIO

- 9 Digit Display, Total Volume, Hourly, Daily and Monthly, Rate of flow
- No Moving Parts: Accurate for the life of the meter, 16 year warranty
- Alarms: Leak, Burst, Dry, Reverse Flow & Tamper
- Flexible Installation: Horizontal, Vertical, Diagonal, or Inverted
- NTEP Approved, both Hot and Cold water, up to 150F

## TECHNICAL FEATURES

- Ultra Low Flow Pickup –
- Maintenance free device, battery lifetime > 16 years
- No straight piperun needed
- No measurement of air
- IP68 protection class, utility grade meter
- Durable composite body, 232 psi max
- Measurement units: Gal-GPM, ft3-ft3/h
- Encrypted Protection
- Standard AWWA Lay Lengths



## APPROVALS

- ✓ NSF/ANSI/CAN 61
- ✓ FCC part 15C
- ✓ OIML R49 compliant
- ✓ NTEP Approved

## AMI READY

- Integrated LoRa WAN communication, US902-928 MHz band
- Integrated NB-IoT
- NFC interface

  
Pair with H2oMetrix



## A SIMPLE & EASY SOLUTION FOR REMOTE READING OF WATER METERS.

- 1 Select the desired meter
- 2 Select an indoor or outdoor gateway
- 3 Download the app

Our inside technical staff will complete the network and meter connection.



METER



GATEWAY



H2OMETRIX  
SOFTWARE

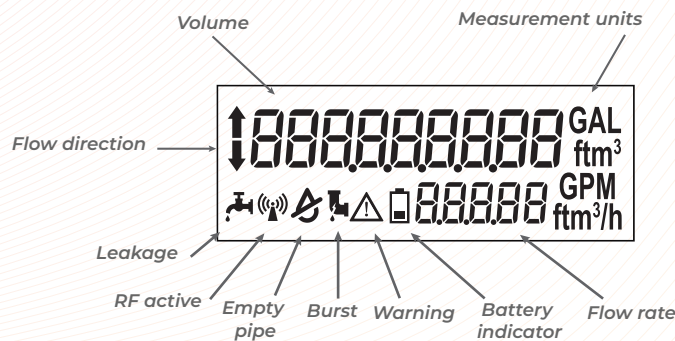
# DATA LOGGER - HISTORY VALUE

Hourly, daily, monthly values of the measured parameters are stored in internal memory

## LCD INDICATIONS AND ALARM

### MULTIPLE ALARMS AND EVENTS, INCLUDING:

- Flow direction indication
- Burst
- Radio communication
- Battery level indication
- Backflow
- Warning indication
- Leak
- Empty pipe
- Low temperature warning



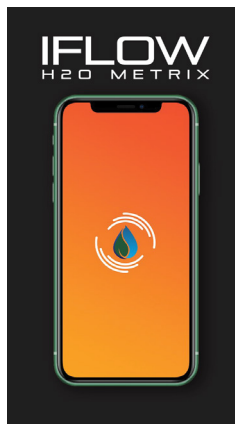
## TECHNICAL DATA:

Sizes:	3/4" , 1" , 1 1/2" , 2"* future
Flow measurement:	New meter measurement accuracy is within the following limits: ± 1.5% over the normal flow range ± 3.0% from the extended low flow range to the minimum flow value
Measured Fluid Temperature Range	33... 194° F (0.1... +90° C) According to AWWA C715-18, measurement accuracy is maintained at water temperatures up to 80° F (+27° C).
Storage Temperature (empty flow sensor)	-13 ...158° F (- 25...70° C)
Protection class [IP]	IP68
Installation	Indoors or outdoors
Battery	3.6-volt lithium thionyl chloride; battery is not replaceable; 16-year battery life

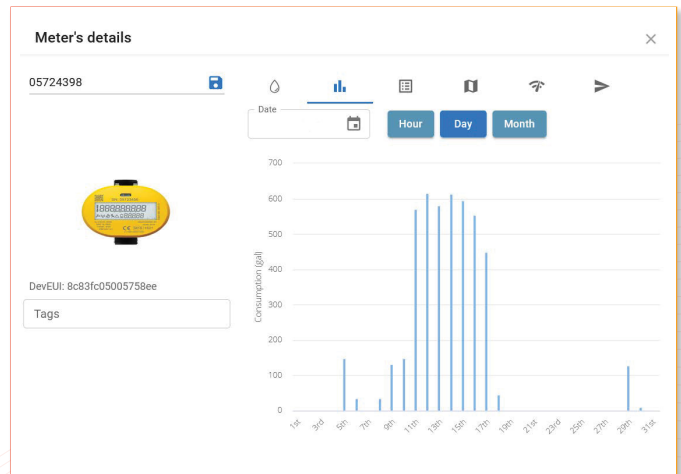
# SPECIFICATIONS

Model#	Q-075	Q-100	Q-150
Q1 W1 meter size	3/4"	1"	1 1/2" *
Dimensions and Lay Length	W: 3" x H: 2 7/8" x L: 7 1/2"	W: 3" x H: 4" x L: 10 5/8"	W: 3" x H: 4 5/8" x L: 12 5/8"
Operating Range	0.15 ... 30 gpm	0.3 ... 50 gpm	0.6 ... 100 gpm
Extended Low-Flow Rate	0.044 gpm	0.11 gpm	0.275 gpm
Maximum Continuous Operation (Safe Maximum Operating Capacity)	30 gpm	50 gpm	100 gpm
Pressure Loss	3.6 psi at 15 gpm	2.3 psi at 25 gpm	2.3 psi at 50 gpm
Max Ambient Humidity	0...100% condensing		
Maximum Operating Pressure of Meter Housing	232 psi		
Register Type	Straight reading, permanently sealed two line LCD; digits are 0.33 in. high		
Register Display	<ul style="list-style-type: none"> <li>• Consumption (US gallons of cubic feet)</li> <li>• Flow rate (US gallons per minute or cubic feet per hour)</li> <li>• Alarms and error codes (if any)</li> <li>• Flow direction indication</li> <li>• Radio active</li> </ul>		
Register Capacity	<ul style="list-style-type: none"> <li>• 999.999.999 gallons</li> <li>• 999.999.999 cubic feet</li> </ul>		
Display Units Available	<ul style="list-style-type: none"> <li>• Gallons or Cubic Feet</li> </ul>		

Above are the basic models. Various configurations are available, please ask your iFlow representative for assistance.



Add the **H2O Metrix** Software + Gateway for a wireless remote reading experience





## ***CONTACT US***



1-888-651-1130



[info@iflowinc.com](mailto:info@iflowinc.com)



[www.iflowinc.com](http://www.iflowinc.com)



2109-C S. Wright St., Santa Ana, CA 92705