



NEXT GENERATION NEEM®



AzaSol® Non-Oil Based Water Soluble Powder

(6% Azadirachtin)

AzaSol is a broad spectrum insecticide botanically derived from Neem.

Effective for: Aphids, Whiteflies, Leafminers, Scale, Mealybugs, Thrips, Psyllids, Bugs, Flies, Sawflies, Caterpillars, Beetles, Weevils, Borers, Mole Crickets, Mushrooms Flies, Pests of Turf Grass and more.

- 040-5011 0.75 oz. Packet: Makes up to 21 gallons
- 040-5001 6 oz. (8 of 0.75 oz. Packets): Makes up to 168 gallons
- 040-5040 1 lb. Container: Makes up to 454 gallons
- 040-5007 2 lb. Container: Makes up to 908 gallons

What is Neem?

Neem is a tree native to India, *Azadirachta indica*. The seeds contain the active ingredient Azadirachtin, which is a proven natural anti-feedant, growth regulator, anti-ovipositor, and insect repellent. Neem oil is widely used in organic insect control, but in the oil form can cause clogging and burning and often has minimal active ingredient.

The AzaSol Difference

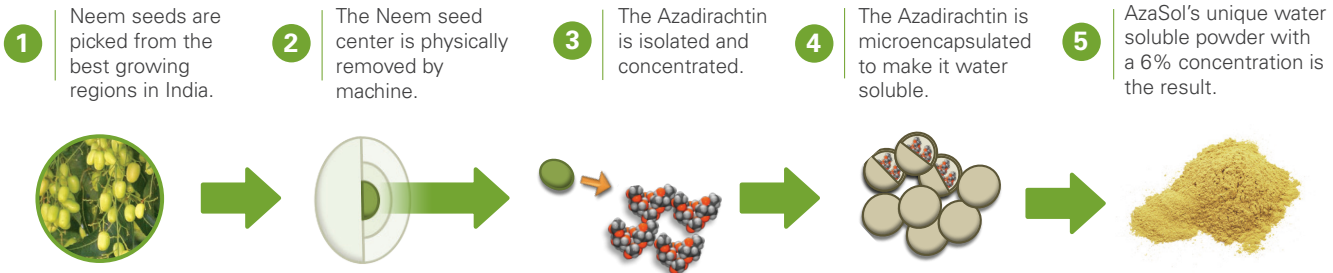
AzaSol is a water soluble powder which comes from the highest quality Neem. Through its patented production process, AzaSol provides an exceptionally potent, non-oil based, and environmentally friendly insect control solution.

- 6% Azadirachtin offers highest active ingredient
- No oily residue or clogging of equipment
- Won't burn leaves or block photosynthesis
- Systemic & translaminar (Absorbed through leaves)
- Same day harvest of food crops
- OMRI Listed for organic use





AzaSol's Patented Process



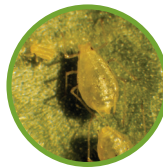
Pests Controlled by AzaSol



Whiteflies



Thrips



Aphids



Mealybugs

AzaSol Spray, Drench or Chemigation Application & Rates

The attached information is taken from the AzaSol label, but is not meant to be a supplement, nor does it replace the label. Before using AzaSol you must read the entire label.

For optimum results, 2-3 applications made at 7 to 10 day intervals is recommended.

Low Rate <i>(Recommended for preventative treatments before signs of infestation.)</i>	Medium Rate* <i>(Recommended for most treatments. For preventative to medium infestations when pests are present.)</i>	High Rate <i>(Recommended for difficult to manage pests or high infestations.)</i>
1 tsp / 1 gal water / 1000 sq. ft.	2-3 tsp / 1 gal water / 1000 sq. ft.	4 tsp / 1 gal water / 1,000 sq. ft.

*Not approved for use in California