

# SAMEBIKE

PRODUCT INSTRUCTION MANUAL



**RS-A08**



<https://www.gzsamebike.com>

# SAMEBIKE

Electric Mountain Bicycle

---

## User Manual

Production license No. : (粵)XK16-002-01025

Model : RS-A08



# SAMEBIKE

## The catalogue of Electric Mountain Bicycle

<b>1.Important warning</b>	<b>3</b>
<b>2.Unpacking and product specs</b>	<b>4</b>
<b>3.Product components</b>	<b>5</b>
<b>4.Method of assembly</b>	<b>6</b>
Adjust handlebar and stem	6
Installing the front wheel	6
Assemble headlight	7
Mounting pedal	7
Seat installation	7
The method of removing the battery	8
<b>5.Product instruction</b>	<b>8</b>
Charging method	8
Power on/off	8
LCD Display (functional instruction)	8
<b>6.Preparation before riding</b>	<b>12</b>
<b>7.Warranty policy</b>	<b>12</b>



# 1.Important warning

- This manual include important safety performance information and service information. Please make sure you have read the following warning content before the first time you use our product.
- If you borrow your electric bicycle to other people, please let the user read this manual, it could help to decrease the risk of accident.
- Please wear a suitable and safe helmet before riding, please wear the clothes with fluorescent and reflective stripes when you ride at night Don't exceed speed limit, it is a main reason of traffic accident, we should abide by the traffic rule, we shouldn't exceed the speed limit.
- Don't touch the charging hole on the bike, or use metal touch it, otherwise, the accident will be caused by the transient short circuit of the current.
- Zero starting, braking frequent, driving against the wind, carrying people or anything, insufficient air pressure on the tires. All of these will use much electric energy, and then reduce the endurance mileage. If you want the best endurance mileage, please do something as follows :
  - 1) please use assist mode;
  - 2) on the premise of safety, don't brake frequently or use zero starting;
  - 3) Don't overload;
  - 4) Before riding, please check the pressure of the tire and supply enough pressure.
- Our Ebike should avoid prolonged exposure to the sun or rain, avoid storage in places with high temperature or corrosive gas, so as to avoid electroplating parts and paint surface by chemical corrosion and electrical parts damage, resulting in operational failure and accidents.
- Your current insurance business may not cover the situation you may encounter when riding an electric bike, please contact your insurance company or insurance broker for relevant consultation.
- If you use our ebike in your country, pls refer to the local laws and regulation. For example in China, riding an electric bicycle must reach the age of 16.
- Bicycles are vehicles with certain risk fact factor, please be sure to abide by the traffic rules. At the same time, when emergency braking, brake the rear wheel first, then brake the front wheel, when cycling speed is too fast. There is a danger of tipping over if you brake the front wheel suddenly, please ride carefully.

## 2.Unpacking and product specs

Remove all package material, then inspect each item for any accident damage that may have occurred during shipping.You should find each of these items in your box:



**ELECTRIC BIKE**



**TOOLS:** LARGE WRENCH\*2  
ALLEN WRENCHS\*4  
SCREWDRIVER\*1



**BATTERY CHARGER**

ITEM	SPECIFICATIONS
Model	RS-A08
Product Dimensions	1990x670x1150 (mm)
Package Dimensions	1610x320x810 (mm)
Max Load	330 lbs (150kg)
Package Weight	83.7 lbs (38KG)
E Bike Weight	73.8 lbs (33.5kg)
Max Speed	25 km/h
Battery/Charger	input 100-240V 50/60Hz AC Plug; Output 54.6V3A DC2.1
Pedal-Assist Mode	Approx 50-62 miles (100-120km)
Pure Electric Mode	Approx 25-28 miles (50-60km)
Max Angle of Climb	25 degrees
Charging Time	4-8 hours
Tire Pressure	According to the actual information on the tire
Bell/Horn	Electric Horn Installed
USB Charging Port	Output Voltage 5V1A
Frame Material	6061 Aluminum Alloy
IP Level	Ip54

### 3.Product components



1. Handlebar

2. Display

3. LED Front light

4. Suspension Fork

5. Disc brake

6. Tire

7. Battery

8. Pedal

9. Crankset

10. Chain

11. Saddle

12. Seatpost

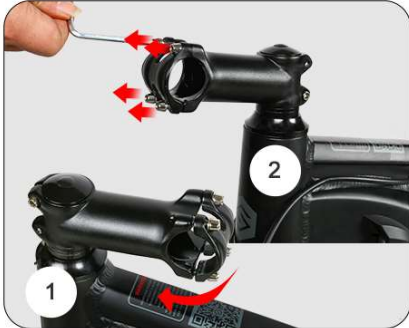
13. Motor

14. Flywheel



# 4. Method of product assembly

## 4.1 Adjust handlebar and stem



1. Loosen the screws, rotate the stem by 180° until it faces forward, and then tighten  
2. Unscrew the four screws and set aside



Install the handlebar to adjust the direction



Tighten 4 screws to fix the handlebar

## 4.2 Installing the front wheel



Put the headlights and the front fender into the screws and tighten them



Prepare the front tires



Reverse the bike for easy installation



Install the side with the ebiked disc into the direction with the disc brake



Put the quick release handle into the tire



Tighten the spring and nut to the screw



After screwing to a certain strength, fasten the quick release handle in the direction of the arrow



Lock the quick release handle to complete the front wheel installation

### 4.3 Assemble the headlight



Loosen the set screw  
counterclockwise



Put in and tighten the headlights  
and front fender respectively



Install the headlights

### 4.4 Mounting pedal



Prepare to pedal  
left and right



The pedal "R" is installed on  
one side of the chainring, and  
"L" is opposite to the chainring



Tighten the right pedal "R"  
clockwise



Tighten the left pedal "L"  
counterclockwise

### 4.5 Seat installation



Open the clamp in the  
direction of the arrow



Find out the saddle with  
the seatpost



Insert the saddle into the  
seat tube



Adjust the proper height and  
lock the clamp



## 4.6 The method of removing the battery



Shut down the power



Turn the key clockwise to unlock the battery lock, then press the button.



Remove the battery upwards

# 5. Product instruction

## 5.1 Charging method



Plug the charger into the power hole



The battery can also be removed for charging



Plug the charger into power supply



Red light shows the battery is charging, green light is full

## 5.2 Power on/off



Press the power button and the switch will light up after power on.



Then press the instrument power key to start the ebike system



Please turn off the power button after riding. It is normal the power takes a few seconds to turn off the light.

## 5.3 LCD Display (functional instruction)

### Functions

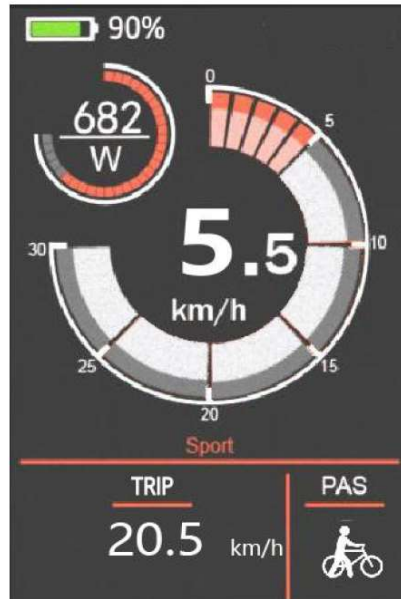
RS-A08 meter offers a variety of features to meet your cycling needs, including:

- Intelligent electric power display
- Motor power indicator
- Speed display (including real-time speed, maximum speed, average speed)
- Mileage display (including single mileage and total mileage)
- Assist pushing control and display
- Cycling time display
- Backlight Control and Display
- Error code display
- USB connection indicator
- Multiple parameter settings (such as: wheel diameter, speed limit, battery power setting and assist parameter setting, etc.)



### ◆ Assist pushing mode

Press and hold the "—" button, and after 2 seconds, the electric bike will enter the state of electric assist pushing mode. Electric bike travel at a speed of less than 6 kilometers per hour. At the same time, the screen displays "  ". Release the "—" button, the electric bike will stop the power output immediately and return to the state before assist pushing mode.



■ Assist pushing mode can only be used when the user is pushing the electric bike. Do not use it while riding.

### ◆ Headlight control

Press the "+" button for 2 seconds to turn on the headlight. After turning on the headlight, the backlight brightness will decrease. Press the "+" button again for 2 seconds to turn off the headlight.

### ◆ Power gear selection

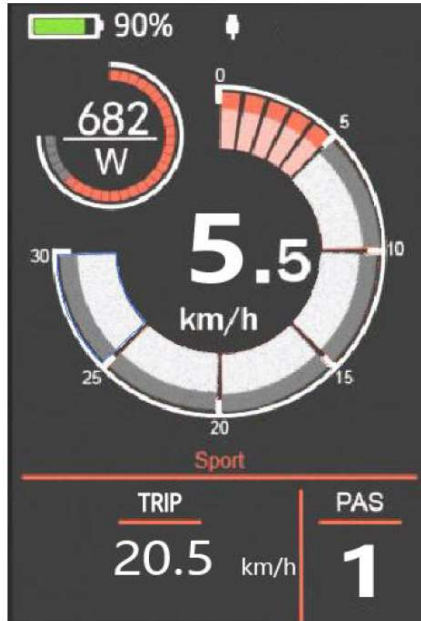
Short press "+" or "--" button to switch the power gear of the electric bike and change the output power of the motor. The default output power range of the meter is 0-5, 0 is stop power output, 1 is the lowest power, 5 is the highest power. When reaching the 5th gear, press the "+" button again, the meter screen will still display 5, and flash 5 to indicate that the current is the highest gear. After the power-assisted downshift reaches the 0th gear, short press the "—" button again, the meter screen still displays 0, and 0 flashes to indicate that the current is the lowest gear. Meter startup default gear is 1.





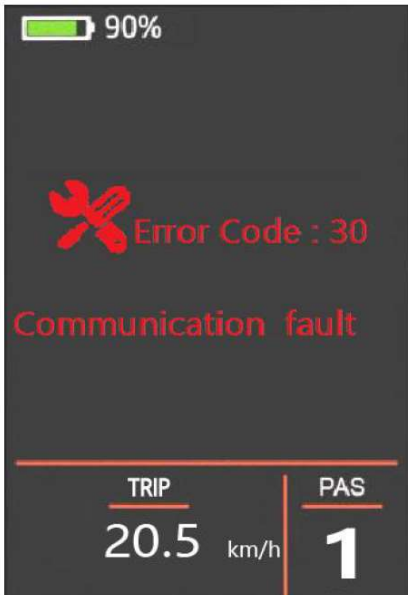
### ◆ Motor power and USB connection indicator

The output power of the motor can be known through the meter. When the meter is inserted into the USB external device, the meter will be showed as shown in the picture below.



### ◆ Error code display

When the electric bike electronic control system fails, the meter will display the error code automatically. For the detailed definition of the error code, see Attached Table 1



Schedule 1: Table of error code definitions

Error code	Definition
21	Current anomaly
22	Throttle anomaly
23	Motor anomaly
24	Motor Hall signal anomaly
25	Brake anomaly
30	Communication anomaly

■ When the error code is displayed, please troubleshoot the fault in time. After the fault occurs, the electric bike will not run normally.

## 6. Preparation before riding

1. Before riding, please read the <User Manual> carefully. Please check whether the parts in good condition to ensure the safety of your riding.
2. Please check the status of the vehicle. Please check the brake, wheel, handlebar, folding buckle, quick release part of the electric bike to make sure the electric bike has good status.
3. Please check the electrical system :To know whether the battery power is enough. if it is not enough, you need charge it as soon as possible.
4. Please check whether the brake system works properly. If it doesn't work properly, please stop using it, please contact the official customer service person.

## 7. Warranty policy

1. Users should operate in accordance with the product manual. In case of any performance fault caused by production quality, the company shall perform the obligations of the three guarantees in accordance with the provisions of relevant laws and regulations of the state
2. The company is still responsible for the after-sales service of the faults beyond three guarantees and the major components in the Three guaran-tees, but there will be a cost for repair.
3. If the battery replacement over the warranty time , Our company will besupply the battery by factory price. To ensure safety and not to pollute theenvironment the battery must be 1:1 recycling and return to the battery manufacturer

**EPAC EN 15194**



**GUANGZHOU SAMEWAY ELECTRIC  
BICYCLE CO., LTD**

Address: No. 32, bi cun north road, Xinhua  
industrial zone, Yingbin avenue west,  
Huadu district, Guangzhou Guangdong,  
China 510812

**MADE IN CHINA**