

1 FIRST USE OR AFTER A LONG PERIOD OF NON-USE

⚠ Use COLD Filtered or Distilled WATER ONLY in the Water Tank



Fill Water Tank with Filtered or Distilled Water

Place the Cup in position on the Drip Grid

Plug into Mains and switch ON



Preheating

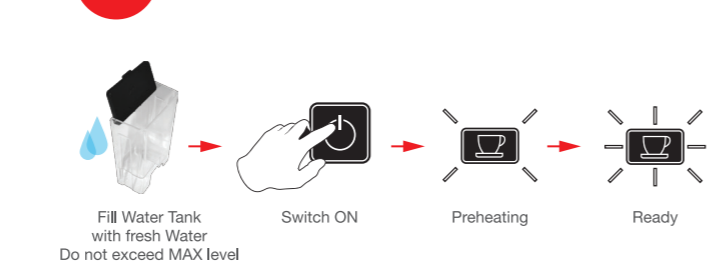
Ready

Rinse: Let water run to fill 6 cups

To fill a cup, push the START/STOP button to start. To stop the flow, press the START/STOP again.

NOTE: When rinsing water for the first time, a pumping sound may occur. This is normal.

2 DAILY - BEFORE YOUR FIRST COFFEE



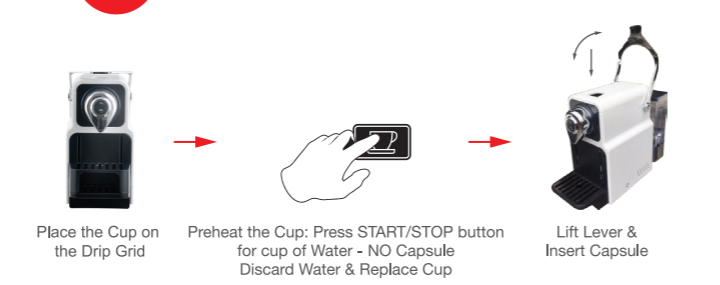
Fill Water Tank with fresh Water
Do not exceed MAX level

Switch ON

Preheating

Ready

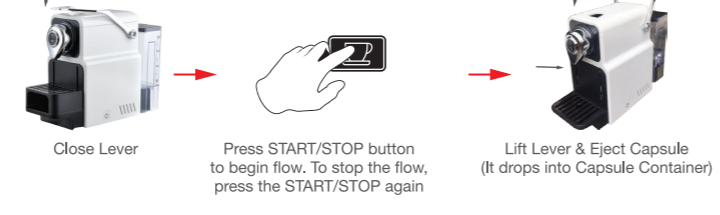
3 MAKING A CUP OF COFFEE



Place the Cup on the Drip Grid

Preheat the Cup: Press START/STOP button for cup of Water - NO Capsule Discard Water & Replace Cup

Lift Lever & Insert Capsule



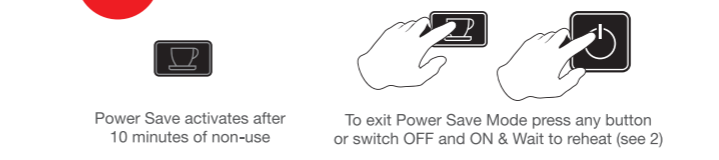
Close Lever

Press START/STOP button to begin flow. To stop the flow, press the START/STOP again

Lift Lever & Eject Capsule (It drops into Capsule Container)

NOTE: During brewing process, you can cancel the coffee brewing process by pressing coffee button once. To restart the brewing process, just press the button again.

4 POWER SAVE MODE

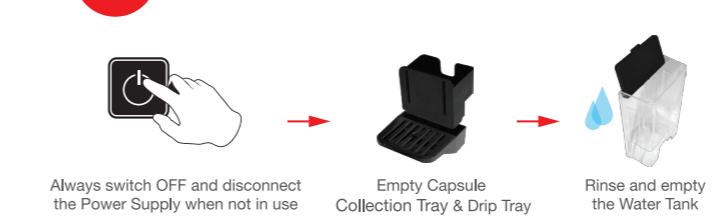


Power Save activates after 10 minutes of non-use

To exit Power Save Mode press any button or switch OFF and ON & Wait to reheat (see 2)

NOTE: The appliance will enter into standby mode and the light will go off if no activity occurs within 10 minutes after the appliance finishes brewing coffee. To resume brewing, make sure the water tank is full, make sure the power switch is on and press any button to resume.

5 DAILY AFTER YOUR LAST COFFEE



Always switch OFF and disconnect the Power Supply when not in use

Empty Capsule Collection Tray & Drip Tray

Rinse and empty the Water Tank

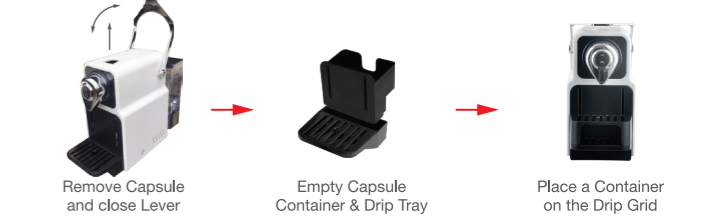
6 CLEANING & MAINTENANCE

1. Be sure to unplug this appliance and cool down before cleaning. 2. Use a dry cloth to wash the removable water tank. 3. Empty the capsule collection tray and clean it. 4. Clean the capsule holder with a dry cloth. 5. Use a damp cloth to gently wipe the cup holder grid. 6. Clean the machine with a damp cloth and a mild non-abrasive cleaning agent, never submerge the unit. 7. Replace all parts and keep for next use.

NOTE: Non-abrasive, No Dishwasher, No Solvents

7 DESCALING

Make sure machine is turned OFF.
Carefully read the safety instructions on the Descaler packet.
Descaler is aggressive to surface of casing. DO NOT USE VINEGAR.



Remove Capsule and close Lever

Empty Capsule Container & Drip Tray & Switch ON

Place a Container on the Drip Grid



Rinse Machine (see 1) & Switch OFF when complete

Fill the water tank to the MAX with 4 parts Water to 1 part Descaler

Place a Container on the Drip Grid



Switch ON & Wait until Ready

Press START/STOP button to begin flow

Allow the liquid to flow. Once desired quantity is reached, press the START/STOP to stop the flow



Wait for 20 minutes with the machine turned on

Press START/STOP button to begin flow. To stop the flow, press the START/STOP again. Repeat until all of the water is used up

Rinse tank well, fill with clean water. Repeat previous step, using all water again



8 TROUBLESHOOTING

PROBLEM

SOLUTION

No Light.	Check if the plug has been inserted correctly into the socket, if the power button has been pressed and if the corresponding red light is on. The machine might switched off automatically; press ON/OFF Button. Check Mains: plug, voltage and fuses.
The machine makes a strange noise.	Check if there is water in the tank.
A slight hiss can be heard after the coffee has been released.	This is not a fault, but normal settling of the pressure control valve.
The lights are on but no coffee comes out.	The capsule inserted may be faulty. Wait for a few seconds, then try again with a new capsule.
No Coffee.	Check the Water Tank, if it is empty, fill it with water. Descale it if necessary. Lift the lever. Press ones coffee Button and wait until water comes out.
Coffee is not hot enough.	Preheat the cup. Descale the Machine if necessary.
The Lever cannot close completely.	Empty the Capsule Container. Check if there is no Capsule stuck inside the Machine.
Leakage or unusual Coffee flow.	Check if the Water Tank is in position.
Lights flash irregularly.	Check the Water Tank, and if it is empty, fill it with water. Place a new Capsule in the Machine. Exit Descaling procedure. Power save activates after 10 minutes of non-use.
Water comes out, but no Coffee.	Place a new Capsule in the Machine.



9 SAFETY PRECAUTIONS

In the case of Emergency:
Immediately switch OFF the power and remove the plug from the power socket.

When using electrical appliances, basic precautions should always be followed, including the following:

- Only plug the appliance into a suitable, easily accessible, earthed main connection. Make sure that the voltage of the power source is the same as that specified on the rating plate. The use of an incorrect connection voids the warranty.
- Do not pull the cord over sharp edges, clamp it or allow it to hang down.
- Keep the cord away from heat and damp.
- If the supply cord is damaged, it must be replaced by the manufacturer, its service agent or similarly qualified persons.
- If an extension cord is required, use only an earthed cord with a conductor cross-section of at least 0.75mm² or matching input power.
- Never place the appliance on or beside hot surfaces such as stoves, ovens, open flame, or similar.
- Always place it on a horizontal, stable and even surface. The surface must be resistant to heat and fluids, like water, coffee, or similar.
- Disconnect the appliance from the mains when not in use for a long period. Disconnect by pulling out the plug and not by pulling the cord itself.
- Before cleaning/servicing, remove the plug from the mains socket and let the appliance cool down.

THE APPLIANCE IS INTENDED FOR BEVERAGES ACCORDING TO THESE INSTRUCTIONS:

1. Do not use the appliance for other than its intended use.
2. This appliance has been designed for indoor use only.
3. Keep appliance away from direct sunlight, prolonged water splash and humidity.
4. This appliance is intended to be used in households/offices and similar residential environments.
5. The appliance is not intended for use by persons (including children) with reduced physical, sensory or mental capabilities, or lack of experience and knowledge, unless they have been given supervision or instruction concerning use of the appliance by a person responsible for their safety. Keep out reach of children. The manufacturer accepts no responsibility and the warranty will not apply for any commercial use, inappropriate handling or use of the appliance, any damage resulting from use for other purposes, faulty operation, non-professionals repair or failure to comply with the instructions.



24 MONTH REPLACEMENT WARRANTY

REGISTER NOW

To register your warranty:

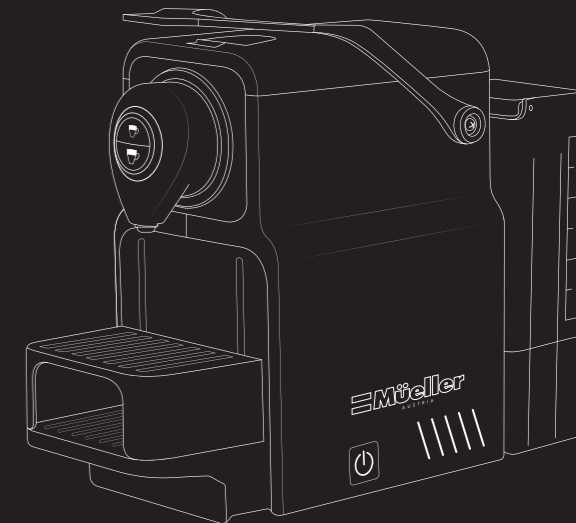
Log onto
www.muellerdirect.com/warranty

Müller
A U S T R I A

🏠 515 Haram Ave, Opa Locka, FL 33054
☎ (888)-632-9981
✉ support@muellerdirect.com
🌐 www.muellerdirect.com

Müller
A U S T R I A

Nespresso
COMPATIBLE MACHINE



INSTRUCTION MANUAL & WARRANTY