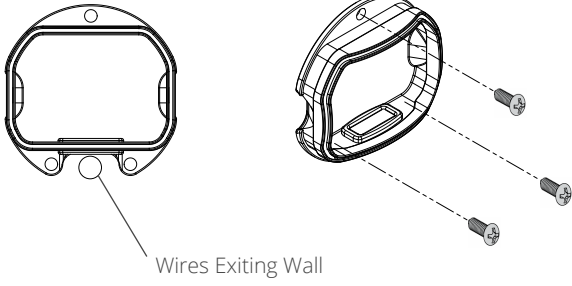
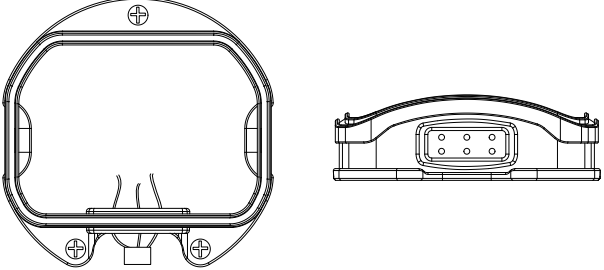
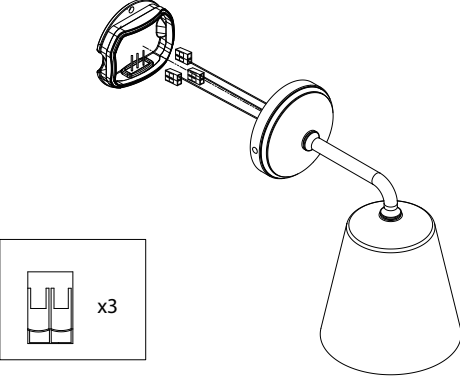
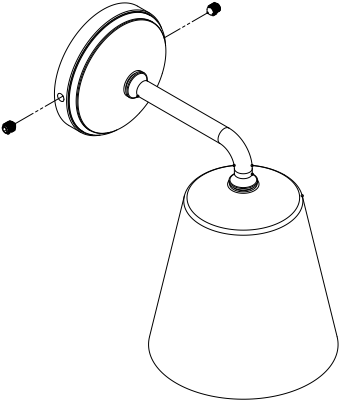
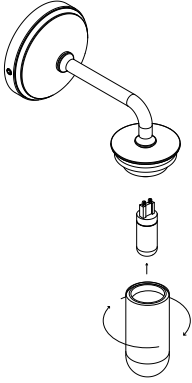
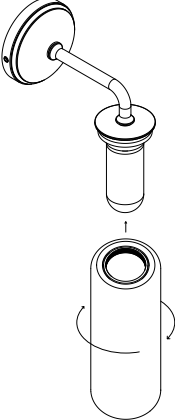
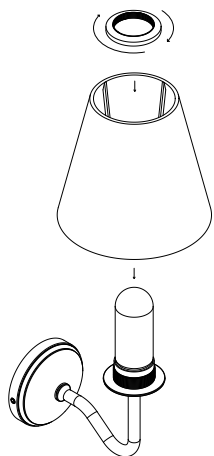


Instruções para candeeiro de parede pequeno

<p>1. Instale o suporte do candeeiro de parede</p>  <p>Wires Exiting Wall</p>	<p>2. Passe os fios através do ilhó</p> 
<p>3. Ligue os WAGOs dentro da base</p>  <p>x3</p>	<p>4. Aperte os parafusos de</p> 
<p>5. Desenrosque a tampa de vidro para adicionar a lâmpada</p> 	<p>6. Enrosque o abajur Claremont na estrutura</p> 

Instruções para candeeiro de parede pequeno

7. Use a anilha do abajur para fixar o abajur



8. Use o parafuso de fixação para ajustar a altura do abajur

