



Introducing Transilluminators

A guide to our products

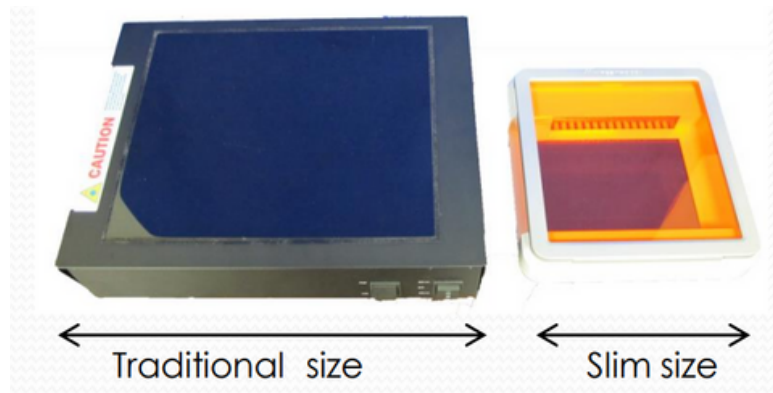
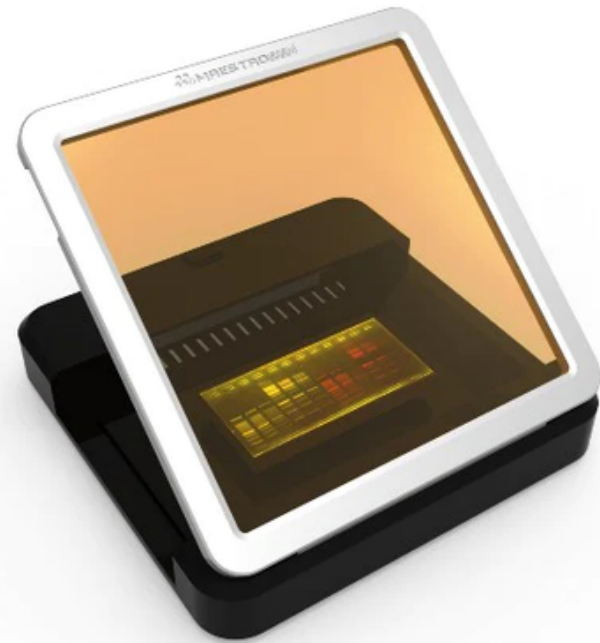
Transilluminators are optimized for use with nucleic acid and protein stains such as: EtBr, SYBR Safe, SYBR Gold, SYBR Green I & II, S YPRO® Orange, Coomassie Fluor™ Orange stains, GelGreen, GelRed and Lumitein™ Protein Gel Stain



UltraSlim™ LED Transilluminator

Small and Strong

- ✓ Designed for viewing stained gels on the laboratory bench or within gel documentation systems
- ✓ Accurate with <10% CV across full filter area and incredibly sensitive with up to 1ng nucleic acid
- ✓ Small enough for single handed take
- ✓ Easy for observation and gel cutting
- ✓ Safe, no damage to you or your samples
- ✓ Lighting from the LED source inside instrument produces blue light with a narrow emission peak centered at 470nm; effective for excitation of most nucleic acid/protein stains



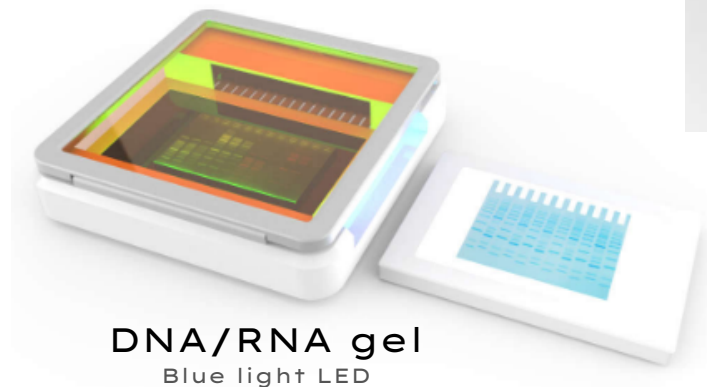
*MaestroGen SW-04 Slim White (LED white transilluminator) can be used alone or combined with MaestroGen UltraSlim LED Transilluminator SLB-01W; SLB-03W for viewing DNA, RNA and protein gels.

UltraSlim™ LED Transilluminator

Small and Strong

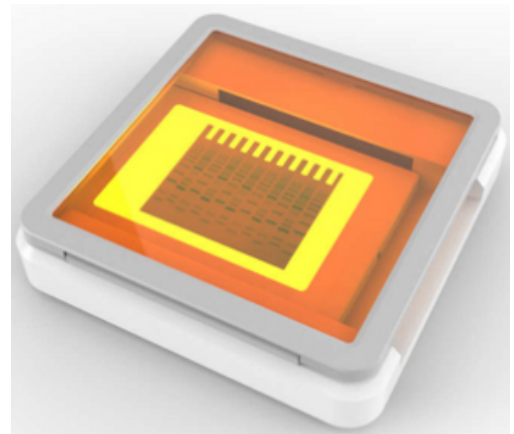
Specifications:

Cat no.	SLB-03W (SLB-01 W+SW-04)
Dimensions	210(W)x210(D)x30(H)mm
View Size (mm)	120(D)*70(W)-Blue 130(D)*90(W)-White
Light Source	Blue LED(470nm)+White LED
Uniformity	10% CV
Blocking filter	Amber color
Power	DC 12V 2.5A
Weight (Kg)	2.6



DNA/RNA gel
Blue light LED

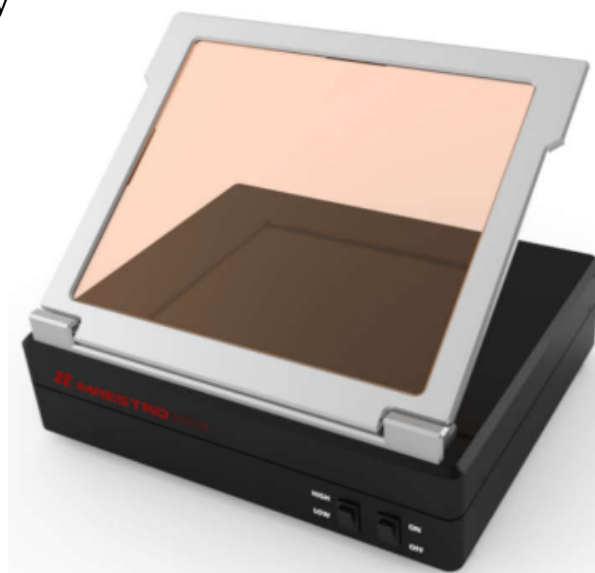
Protein gel
White light LED



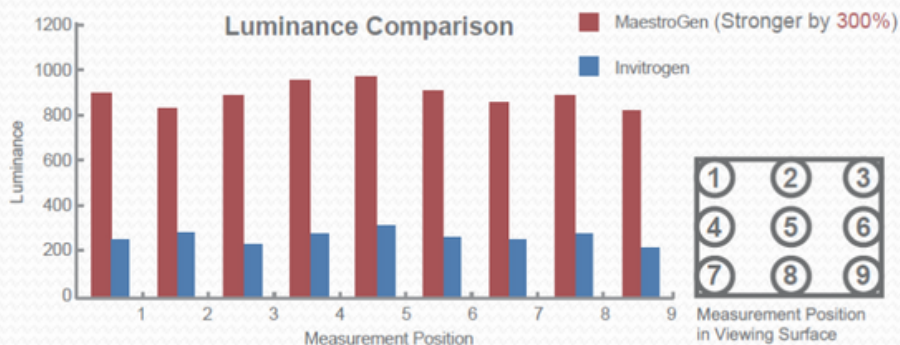
UltraBright® LED Transilluminator

Safe for you, good for your sample

- ✓ Designed for viewing strained gels on the laboratory bench, or within gel documentation systems
- ✓ Flexibility as it is suitable for multiple strain types and adjustable intensity
- ✓ Easy for observation and gel cutting
- ✓ Accurate with <5% CV across the full filter area and incredibly sensitive with up to 1ng nucleic acid
- ✓ Safe with no damage to you or your samples



Variance of light < 5%,
the best spec in the world



The best uniformity and intensity

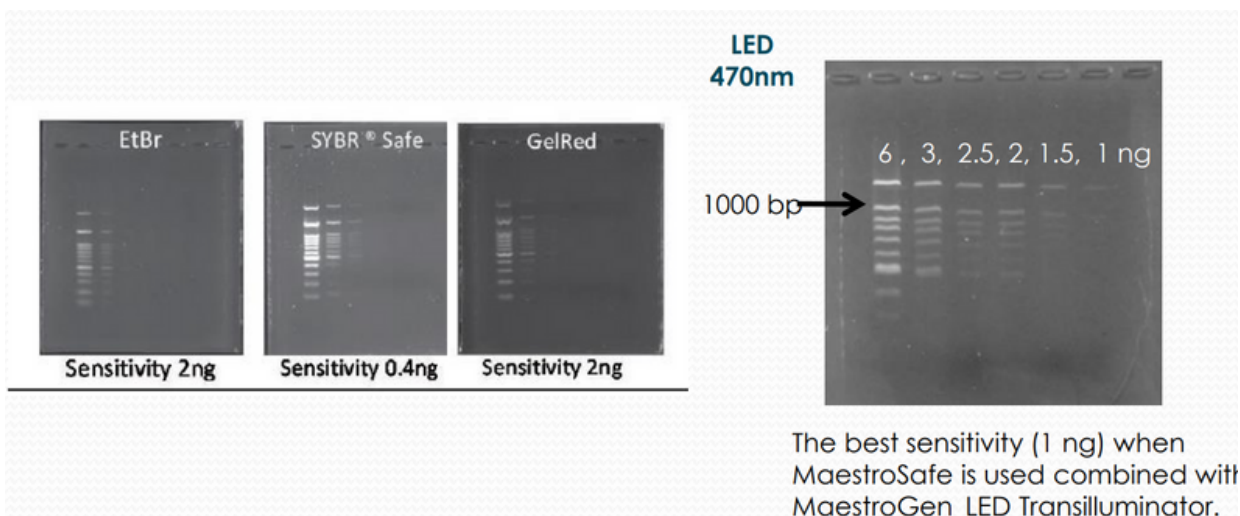
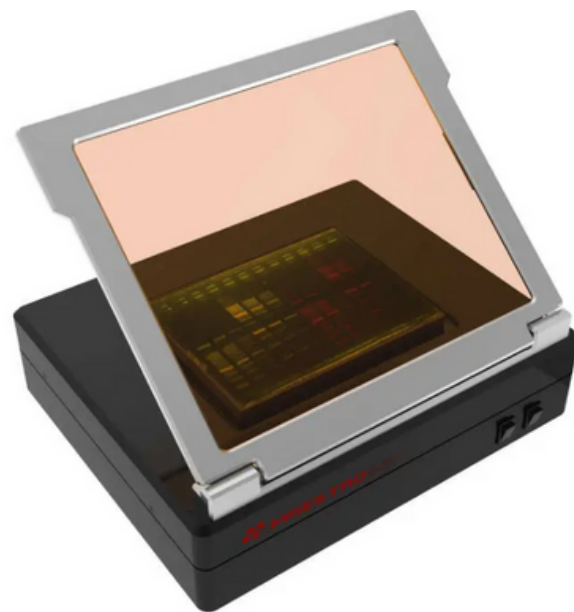


UltraBright® LED Transilluminator

Safe for you, good for your sample

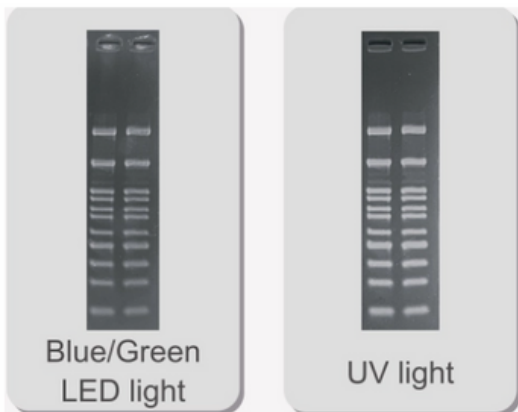
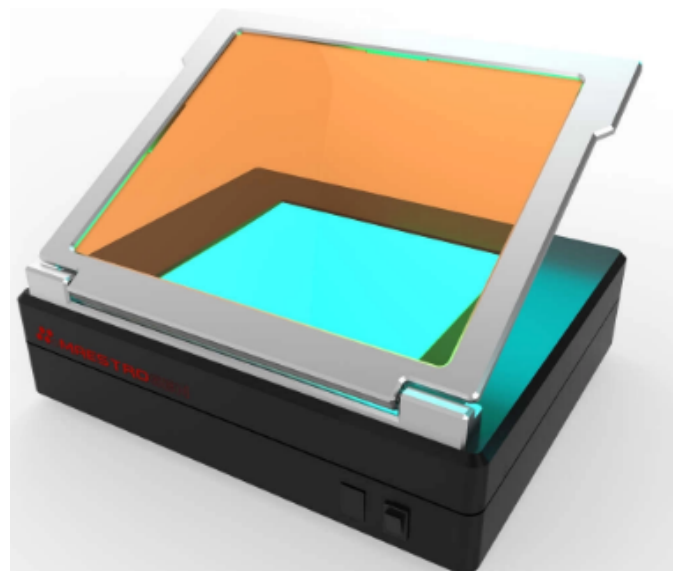
Specifications:

Cat no.	LB-16	LB-17
Dimensions	280D x 340W x 80H	280D x 340W x 80H
View Size (mm)	160D x 200W	160D x 200W
Light Source	Blue LED light	Blue, Green, Red LED light
Uniformity	< 5% CV	< 5% CV
Wavelength (nm)	470 nm	470 (Blue), 530 (Green), 630 (Red); no 630(Red) filter
Power	24V - 1.25A	24V - 1.25A
Weight (Kg)	3.6 kg	3.6 kg



UltraBright® Blue/Green LED Transilluminator

- ✓ Designed for viewing DNA/RNA gels on the laboratory bench
- ✓ Easy for observation and gel cutting
- ✓ Safe with no damage to you or your samples
- ✓ Accurate with <5% CV across the full filter area and incredibly sensitive with up to 1ng nucleic acid
- ✓ Flexibility as it is suitable for multiple strain types and adjustable intensity
- ✓ High power LEDs and dichroic filter inside the instrument, producing a powerful emission light and remove background completely



Comparison with Ethidium Bromide gel results with Blue/Green LED light and UV light

Specifications:

Cat no.	LB-18
Dimensions	280(O)* 340(W)* 80(H)mm
View Size (mm)	160(D)*200(W)mm
Light Source	Nichia LED
Blocking Cover	Aluminum alloy metal frame
Consumption	24 Watt
Filter	Amber color
Wavelength (nm)	505nm
Power	AC 100-240V~50/60 Hz
Weight (kg)	3.8 Kg

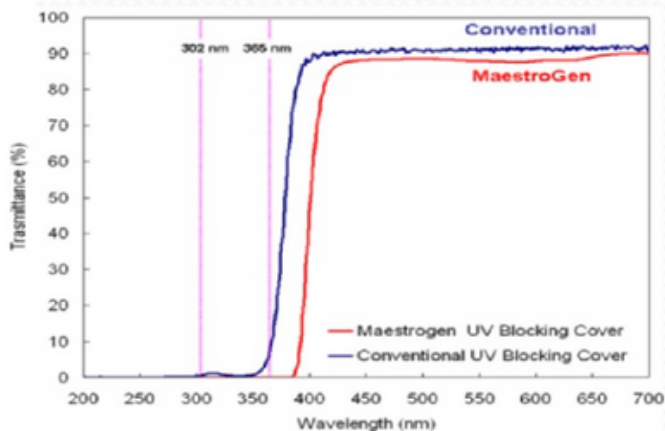
UltraSlim UV Transilluminator

As small as it can be

- ✓ Equipped with a new-design UV blocking cover which is easily detachable for access to the work surface
- ✓ Small enough for single handed take
- ✓ Accurate with <5% CV across the full filter area and incredibly sensitive with up to 0.5ng nucleic acid and higher S/N ratio
- ✓ Easy for observation and gel cutting



UV transmittance	MaestroGen	Conventional
UVA (365 nm)	< 0.1%	8%
UVB (302 nm)	0%	0.38%



UltraSafe UV blocking cover: block 99.99% of UV transmittance

Specifications:

Cat no.	UUV-01
Dimensions	247D x 132W x 48.5H
View Size (mm)	150D x 80W
Light Source	UV lamp X1
Uniformity	+/- 5 %
Wavelength (nm)	302 nm
Power	DC12V/1.5A
Weight (kg)	1.4 Kg



UltraBright UV Transilluminator

High contrast, strong frame



Flexible with adjusted intensity option



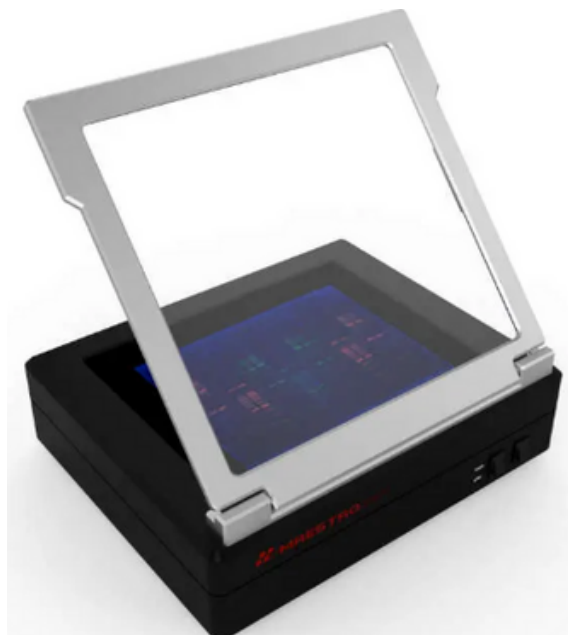
UltraSafe UV blocking cover blocks 99.99% UV transmittance



Easy for observation and gel cutting



Accurate with <5% CV across the full filter area and incredibly sensitive producing high contrast with strong frame, up to 0.1ng nucleic acid



Specifications:

Cat no.	MLB-21	MB-21	MLB-16	MB-16
Dimensions	280D x 340W x 80H	280D x 340W x 80H	280D x 340W x 80H	280D x 340W x 80H
View Size (mm)	210D x 260W	210D x 260W	160D x 200W	160D x 200W
Light Source	UV tubes: 11x 8W	UV tubes: 6 x 8W	UV tubes: 9 x 8W	UV tubes: 5 x 8W
Blocking Cover	Aluminum alloy frame	Aluminum alloy frame	Aluminum alloy frame	Aluminum alloy frame
Wavelength (nm)	302 & 365nm	302 nm	302 & 365nm	302 nm
Power	100-240V, 50-60Hz	100-240V, 50-60Hz	100-240V, 50-60Hz	100-240V, 50-60Hz
Weight (kg)	4.3kg	4.3kg	4.3kg	4.3kg

Bandpeeper

LED Transilluminator

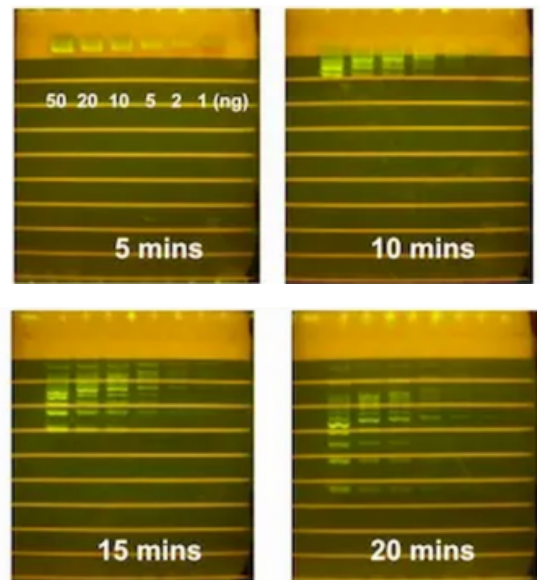
Real-time in gel

- ✓ First platform for offering real-time electrophoresis, LED transilluminator for DNA gel fluorescent signal observation in water solution
- ✓ Sensitivity: 2ng nucleic acid
- ✓ Convenient in respect to time and cost saving for new sample electrophoresis trial & error
- ✓ Safe, no damage to you or your samples
- ✓ Strong blue LED used with common nucleic acid dyes
- ✓ Accurate electrophoresis duration control + no decay for DNA gel (UV flash lamp decays DNA gel)
- ✓ Anti-fog design on amber filter; anti-water condensation



Specifications:

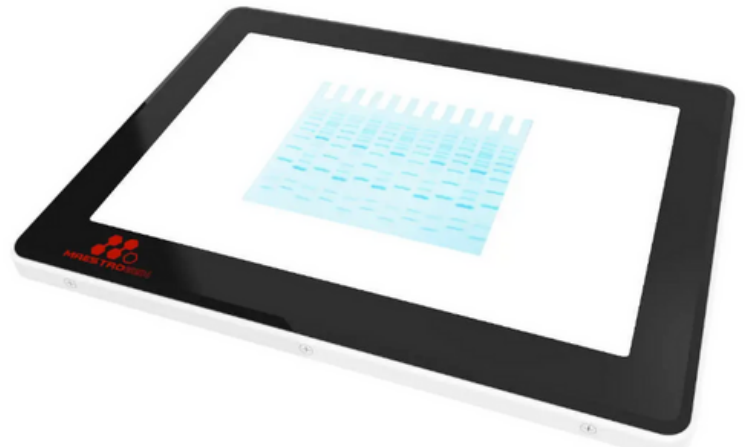
Cat no.	RT - 172
Dimensions	166D x 170W x 51H
Window size (mm)	150D x 60W
Light Source	Blue LED light
Blocking Cover	Aluminum alloy frame
Wavelength (nm)	470 nm
Power	24V - 1.25A
Weight (kg)	0.9 kg
Filter type	Amber filter
PCBA surface	Anti-moisture treatment
Compatibility	Mupid tanks (Mupid exU series: exU, ACE, and ONE)



The real-time observation of electrophoresis in gel

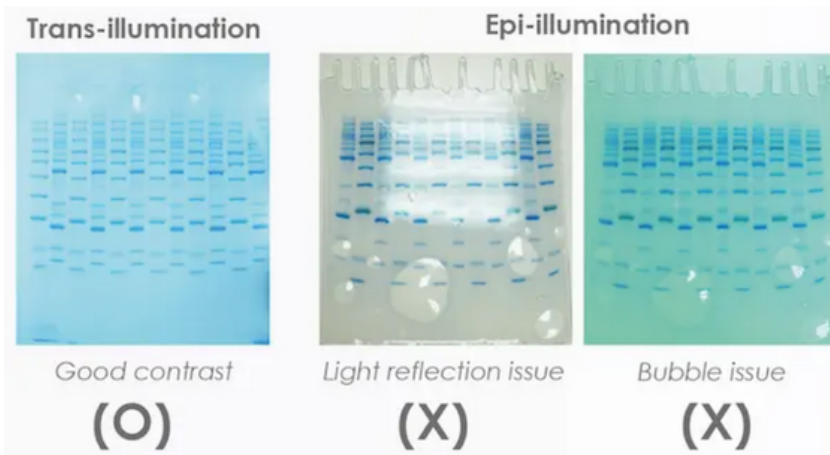
SlimWhite Illuminator

- ✓ Light panel can be used independently, easy to view colorimetric gels, Coomassie blue or silver strained media
- ✓ No need to use UV for white light conversion
- ✓ High brightness
- ✓ Uniform: illumination is designed by light guide plate with diffuser
- ✓ Easy to observe, as light is under the gel, avoids bubble and reflection issues
- ✓ Cost effective (~50,000 hrs), low power consumption



Specifications:

Cat no.	SW-02
Dimensions	292 (D)* 217 (W)* 12.8 (H)
View Size (mm)	240 (D)* 160 (W)
Light Source	White light LEDs
Power	DC 12V
Weight (kg)	1.2



Easy Observation: light source is under the gel, avoiding bubble and reflection

- **SW-02 SlimWhite:** trans-illumination light is under the gel, avoiding bubble and reflection
- **Others:** epi-illumination light is above the gel with bubble and reflection affect



GeneBio
Systems, Inc.

Specialists in Economical Quality Lab Supplies



CONTACT US

5109 Harvester Rd, Unit 12B
Burlington, ON
647 770-8019

Toll-free 1(833)-LabShop 1(833)-5227467
info@genebiosystems.com
order@genebiosystems.com



*Prices are subject to change without notice