



DyeNA-View™ Sample Stain

Catalogue Numbers: M7021 **Size:** 1mL; M7022 **Size:** 5mL

Description

DyeNA-View™ Sample Stain is a non-mutagenic fluorescent reagent that produces instant visualization of DNA bands upon Blue Light or UV illumination of agarose gels. We supplied our 6X DNA Loading Buffer (Cat. # M904) with the DyeNA-View™ Sample Stain. The user can substitute the provided loading buffer with their own favorite loading buffer. It is used to prepare DNA markers and samples for loading on agarose or polyacrylamide gels. DyeNA-View™ Sample Stain is the most sensitive stain available for detecting double-stranded DNA (dsDNA). It is ideal for environments requiring a safe, non-hazardous alternative to Ethidium Bromide. Approximate fluorescence excitation maximas: 300-380, 495nm, and emission maxima 515nm (free) and 530nm (when bound to nucleic acid). Detection sensitivity is better than ethidium bromide by several fold for double-stranded DNA (5-10 fold), RNA (8-16 fold) and single-stranded DNA (4-8 fold). The dye does not inhibit commonly used enzymes, including Taq DNA polymerase, restriction enzymes, and T4 DNA ligase.

Storage

Store at 4 °C up to 12 months.

For longer periods, store at -20 °C.

DyeNA-View™ Sample Stain is light sensitive and should be stored protected from light.

Instruction for Use

1. Vortex DyeNA-View™ Sample Stain for 10 seconds prior to use.
2. Dilute 1 part DyeNA-View™ Sample Stain, 1 part 6X Loading Buffer with 4 parts DNA sample and mix.

Notes:

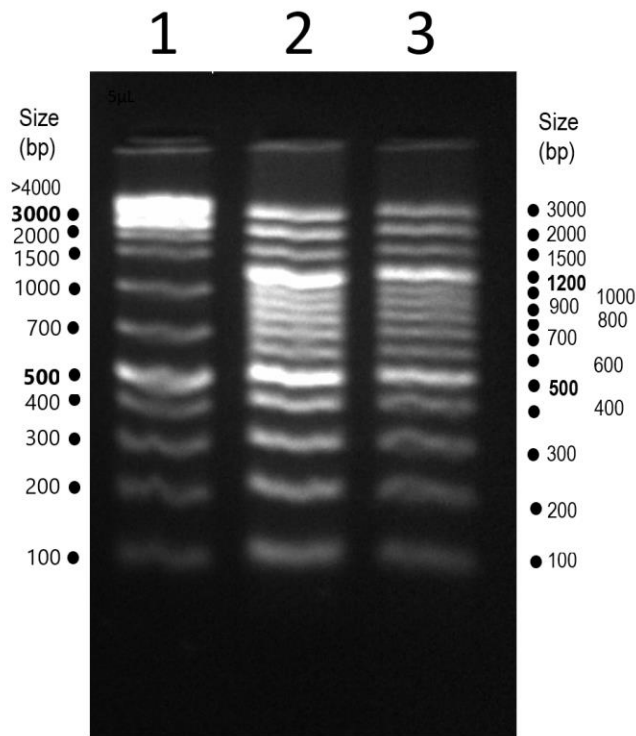
- a) DyeNA-View™ Sample Stain must be added to DNA markers in order to visualize the ladder bands simultaneously with the sample after electrophoresis.
 - b) When working with 10X Loading buffer, dilute 1 part DyeNA-View™ Sample Stain, 0.6 part 10X Loading Buffer with 4.4 parts DNA sample and mix.
3. Load sample and run according to standard procedures.
 4. After the electrophoresis, remove gel and place on a UV or a visible-light transilluminator to visualize bands.

DyeNA-View™ Sample Stain keeps your lab safe:

- Non-hazardous
- Minimize the leaching of stain into the running buffer.
- High Sensitivity
- Convenience
- Time-saving
- Flexible: Can use Blue Light or UV to detect the signal
- Economical: – Non-hazardous product means no expenses required for waste management.
- Less DNA damage provides improved cloning efficiency*

*When using DyNA-View™ Sample Stain with Blue Light Transilluminators

Typical Results



2% agarose gel was run in 1X TBE. DyeNA-View™ Sample Stain was added to the DNA ladder in 1X concentration. The following samples were loaded: lane 1, 5µL of GB-Ruler™ 1 kb DNA Ladder Plus; lanes 2, 10 and 5µL of GB-Ruler™ 100bp DNA Ladder Plus

Questions? We are here to help.

Contact us at TechSupport@genebiosystems.com and 1-833-LabShop (1-833-522-7467), or visit www.genebiosystems.com

Ordering Information For Gel Electrophoresis

Product	Cat. #	Size	List Price
DyeNA-View™ Sample Stain	M7021	1mL	\$69
DyeNA-View™ Gel Stain	M7011	1mL	\$69
GB-Ruler™ 1 kb Ladder Plus	M1181	50µg (100 Uses)	\$35
		5 X 50µg (500 Uses)	\$122
GB-Ruler™ 100 bp Ladder Plus	M1071	50µg (100 Uses)	\$35
		5 X 50µg (500 Uses)	\$122
LE Agarose	ELA-03	100 g	\$80
		500 g	\$360
GB-Clean™ Gel Extraction Kit	N1071	50 Preps	\$50