

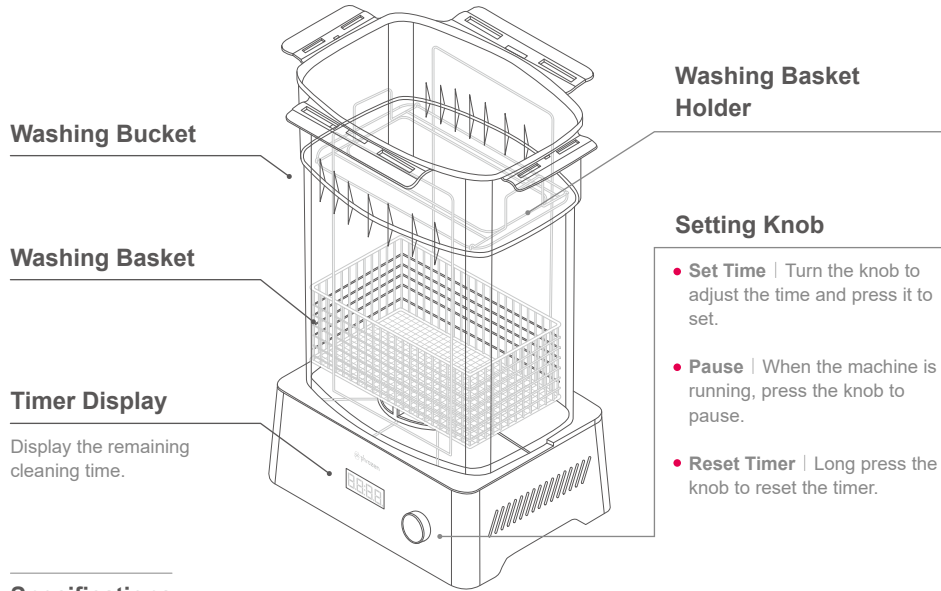


Phrozen Wash & Cure Kit User Guide

Washing Station Post Printing Cleaner



Scan for other languages



Specifications

Control Mode : Knob + Button

Rated Power : 48W

Input : 24 VCD

Product Dimension : L27.7 x W20.7 x H46.7 cm

Washing Bucket Volume : 8 L

Maximum Model Size : L21.8 x W12.3 x H23.5 cm

Weight : 3.5 kg

Timer : 0 - 30 minutes

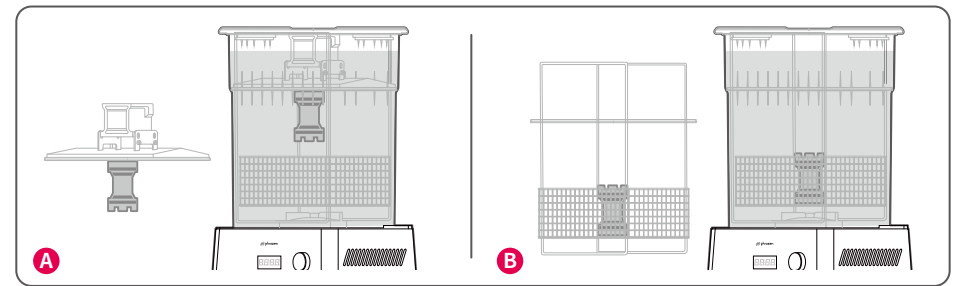
01 Before You Start

- | Place the machine on a clean and level surface.
- | Put the washing basket into the bucket.
- | Please make sure to wear protective goggles, gloves, masks, and long-sleeved clothing when handling the machine.
- | Pour in an appropriate amount of alcohol (95%) or other cleaning fluid (Phrozen Wash).
- | Cover the bucket when the machine is in use to avoid splashing and objects falling.
- | Keep the bucket covered to avoid alcohol evaporation when the machine is not in use.

02 Instructions

- 1 After printing is completed **A** hang the building plate with prints on the cleaning basket (if the building plate is smaller than 7", use the basket holder). **B** For building plate over 10" put the prints straight into the cleaning basket.
- 2 Turn the knob to adjust the time and press to set. It is recommended that each cleaning time should not exceed 30 seconds as overcleaning might damage the prints.
- 3 After the timer stops, lift the basket vertically and take out the prints.
- 4 Leave prints to dry or use an air gun to accelerate the drying process.
- 5 For hollow and more complicated models, please make sure the prints are clean. If any residual resin was found, repeat steps 2-5.
- 6 After the cleaning process is completed, put prints into the curing machine to cure.

Note : Regularly replace 95% alcohol (cleaning fluid) for optimum results.



Warning

- | Please disconnect the power before cleaning or replacing alcohol (cleaning fluid).
- | **DO NOT** pour resins or other liquid except alcohol (cleaning fluid) into the cleaning bucket.
- | Avoid direct contact with skin to prevent allergies.
- | In case of contact with resin and alcohol (cleaning fluid), please rinse immediately with plenty of water.
- | **DO NOT** remove prints from the bucket when the machine is running.



Help Center



Facebook



YouTube



Instagram

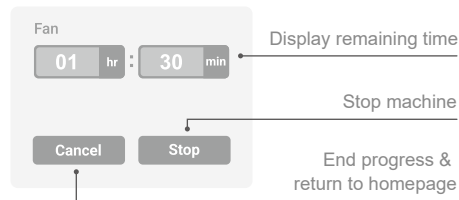
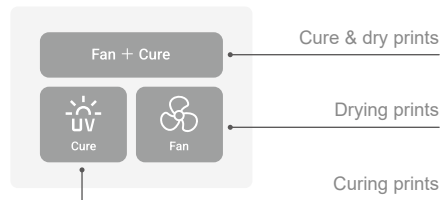
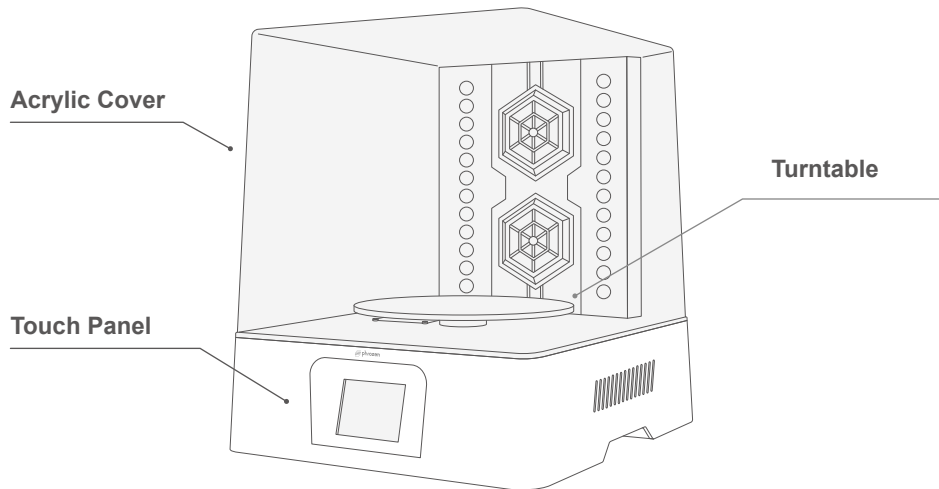


Phrozen Wash & Cure Kit User Guide

Curing Station Post UV Cure Lamp



Scan for other languages



Specifications

Rated Power : 48W

Input : 24 VCD

Product Dimension : L35.4 x W30.9 x H36.8 cm

Turntable Size : Ø19.6 cm

Maximum Model Size : Ø25 x H23.5 cm

Weight : 3.9 kg

Timer : 0-2 hours

LED Wavelength : 405 nm

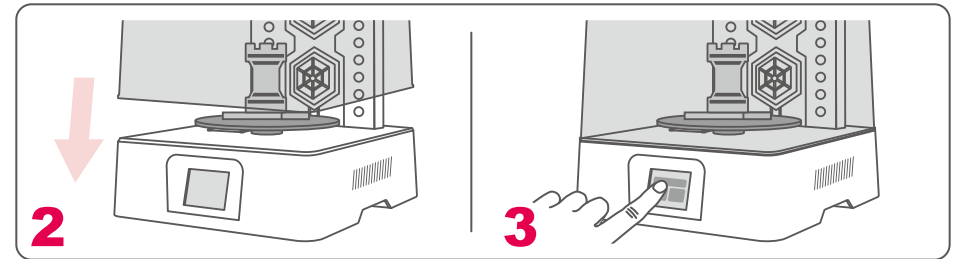
01 Before You Start

- Place the machine on a clean and level surface.
- Install the turntable into the machine and connect the power.
- Please make sure to wear protective goggles when handling the machine.
- Do not remove or lift the acrylic cover when the machine is running.

02 Instructions

- Make sure the model has been thoroughly cleaned without any residual resin before curing.
- Place the model on the turntable and put the acrylic cover into place.
- Select CURE, FAN, or FAN + CURE according to your needs.
- Input the required time and press ENTER. Timer settings are available for up to two hours.
- Please take out the model after the curing process ends.

Note : Cured model might reach higher temperatures; please remove it carefully.



Warning

- Disconnect the power cable before performing maintenance.
- DO NOT** take off the acrylic cover while the machine is running.
- Avoid direct contact of resin and other cleaning fluid with skin to prevent allergies.
- In case of contact with resin and alcohol (cleaning fluid), please rinse immediately with plenty of water.



Help Center



Facebook



YouTube



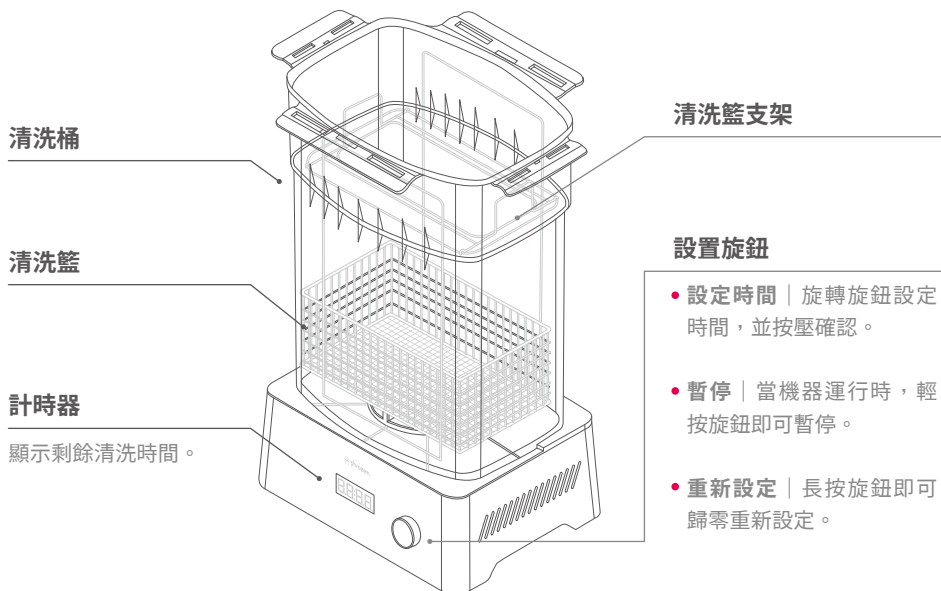
Instagram

Phrozen Wash & Cure Kit 使用說明

Washing Station 後處理清洗機



其他語言版本



規格

控制方式	旋鈕 + 按鈕
額定功率	48W
輸入電壓	24 VCD
機器尺寸	長27.7 x 寬20.7 x 高46.7 公分

清洗桶容量	8 公升
最大模型尺寸	長21.8 x 寬12.3 x 高23.5 公分
機器淨重	3.5 公斤
可設置時間	0 - 30 分鐘

設置旋鈕

- 設定時間 | 旋轉旋鈕設定時間，並按壓確認。
- 暫停 | 當機器運行時，輕按旋鈕即可暫停。
- 重新設定 | 長按旋鈕即可歸零重新設定。

01 使用前須知

- | 將清洗機放置於空氣流通且乾淨的水平面。
- | 將清洗籃放置於清洗機中，並連接電源。
- | 配戴護目鏡、手套、口罩與長袖衣物等個人防護設備。
- | 倒入適量95%酒精或其他清洗劑（如：Phrozen Wash）。

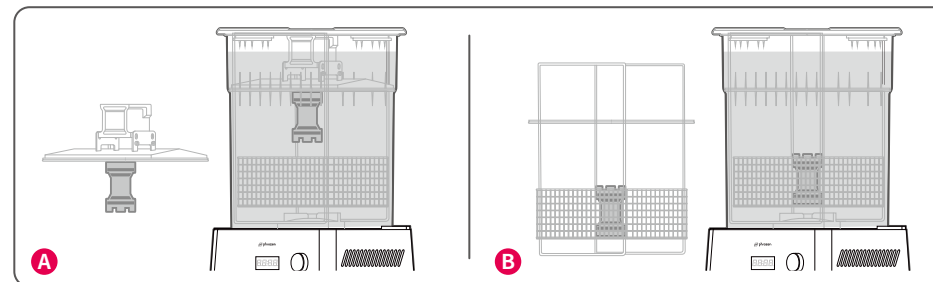


- | 機器使用中請蓋上蓋子，避免異物掉落與避免液體噴濺。
- | 機器使用後請蓋上蓋子，避免酒精揮發。

02 使用步驟

- 1 列印完成後 **A** 將載台連同模型直接吊掛於清洗籃（若使用7吋以下載台可搭配支架使用）。
B 若載台過大（超過10吋），可以將模型鏟下後再放入清洗籃。
- 2 旋轉旋鈕設定時間，並按壓確認。建議每次清洗不超過30秒，若清洗過久可能會造成模型損壞。
- 3 清洗完畢後，將籃子垂直提起並取出模型。
- 4 將物件靜置晾乾或使用氣槍吹乾。
- 5 檢查模型是否清洗乾淨，鏽空或複雜模型容易有樹脂殘留，可重複步驟2-5將模型清洗乾淨為止。
- 6 確認模型清洗乾淨，即可將模型放入固化機中固化。

提醒：95%酒精（Phrozen Wash）為消耗品，需定期更換以維持清潔效果。



注 意 ⚠ 事 項

- | 清潔清洗機前或更換清洗液體（酒精、Phrozen Wash或水）前請務必斷開電源。
- | 除上述清洗液體外，請勿將樹脂或其他液體倒入清洗桶中，以避免機器損毀。
- | 請避免樹脂或清洗液體直接觸碰皮膚，可能引起過敏反應。
- | 若不慎接觸樹脂和清洗液體，請用大量清水立即洗淨。
- | 請勿在機器運作時，拿取桶中物件。



聯繫客服



Facebook
台灣站社團



YouTube



Instagram

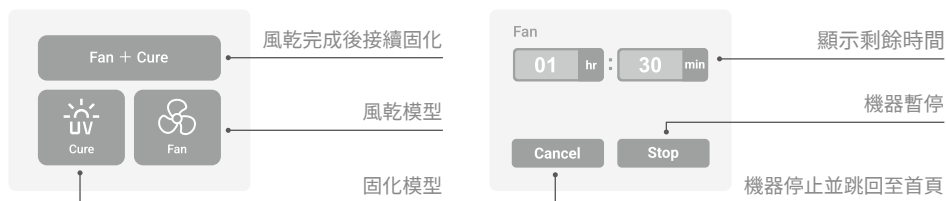
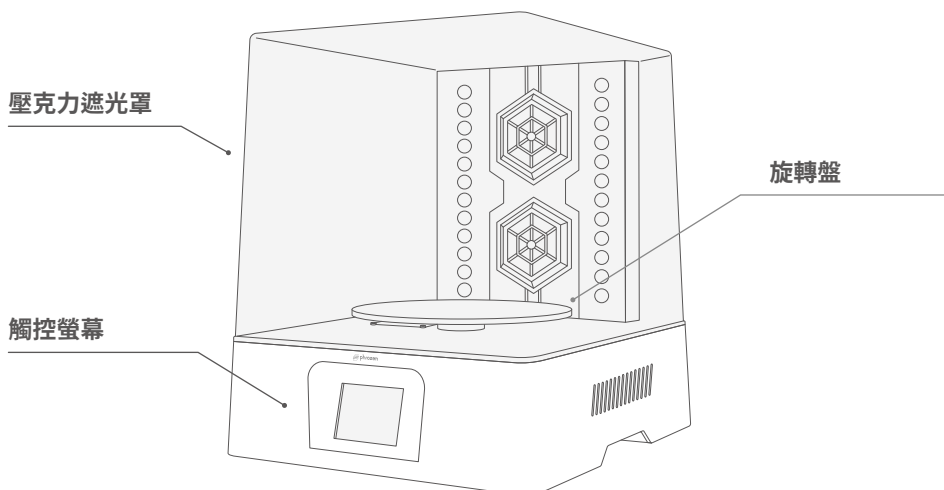


Phrozen Wash & Cure Kit 使用說明

Curing Station 後處理固化機



其他語言版本



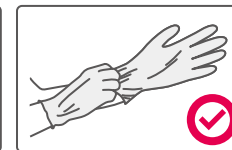
規格

額定功率 48W
輸入電壓 24 VCD
機器尺寸 長35.4 x 寬30.9 x 高36.8 公分
轉盤尺寸 Ø19.6 公分

最大模型尺寸 Ø25 x H23.5 公分
機器淨重 3.9 公斤
可設置時間 0-2 小時
LED波長 405 nm

01 使用前須知

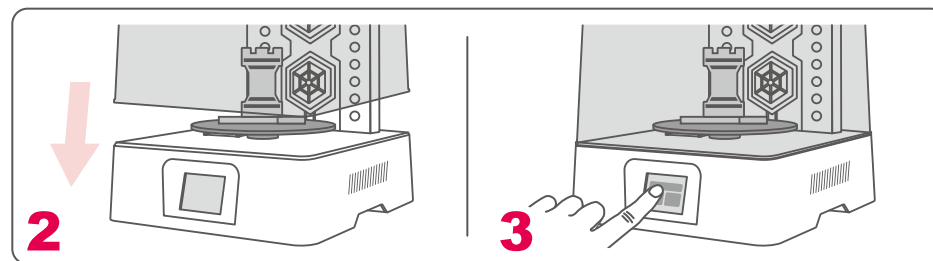
- 將清洗機放置於空氣流通且乾淨的水平面。
- 將旋轉盤安裝至固化機內並連接電源。
- 配戴護目鏡等個人防護設備。
- 機器使用中請勿移動或開啟壓克力遮光罩。



02 使用步驟

- 檢查模型是否清洗乾淨，表面無殘留樹脂。
- 將模型平均放入旋轉盤上，並確實蓋好壓克力遮光罩。
- 可依據需求分別點選「Cure」、「Fan」或「Fan + Cure」。
- 輸入設定的時間後點選「Enter」，時間設置最多為2小時。
- 當機器運轉完畢後將模型取出。

提醒：固化後的模型會有溫度，請小心拿取。



注意 事項

- 機器進行保養前請務必斷開電源。
- 請避免在機器運行中將壓克力遮光罩開啟。
- 請避免樹脂或酒精等清洗液體直接觸碰皮膚，可能引起過敏反應。
- 若不慎接觸樹脂或酒精等清洗液體，請用大量清水立即洗淨。



聯繫客服



Facebook
台灣站社團



YouTube



Instagram