

LED Hexagon Lighting System Installation Guide

Follow these step-by-step instructions to get your LED Hexagon Lighting System up and running. Before starting, make sure you have all the necessary tools and components.

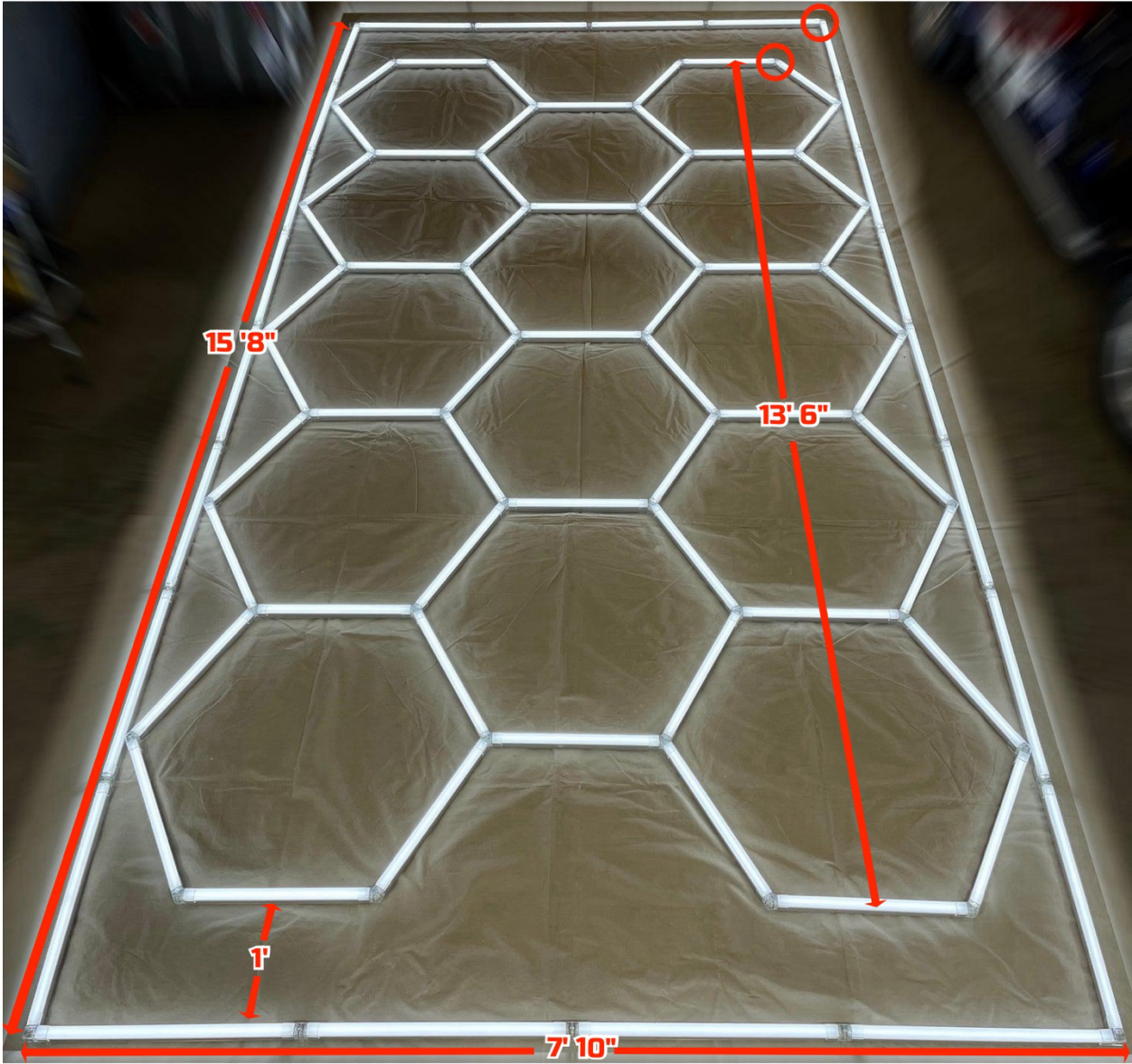


Image 1

Step 1: Verify Components

Unpack your LED Hexagon Lighting System and layout all components on a clean, flat surface. You should have the following items:

- 24 - 22.25" Aluminum and Polycarbonate LED Light Tubes (Rectangular Surround)
- 57 - 17.25" Aluminum and Polycarbonate LED Light Tubes (Hexagon Grid)
- 27 - "Y" Connectors (Hexagon Grid) (Note: one used on the exterior of the Hexagon Grid for power connection)
- 20 - Straight Connectors (Rectangular Surround)
- 17 - "V" Connectors (Hexagon Grid)
- 3 - "L" Connectors (Rectangular Surround)
- 1 - "T" Connector (Rectangular Surround power connection)
- 2 - Power cord pigtailed
- 1 - Bag of zipties



Step 2: Plan Your Installation and Prepare Your Workspace

When assembled, the rectangular surround is approximately 7' 10" wide by 15' 8" long (see Image 1). The length of the hexagon grid is approximately 13' 6", and there is approximately 1' between the outside edge of the hexagon grid and the inside edge of the rectangular surround on each end (see Image 1). Before you start assembling, carefully plan where and how you're going to install your LED Hexagon Lighting System. Consider the structure of your area, including the ceiling or backing surface, power outlets, and any obstacles that might affect installation or use. A good plan will not only streamline the installation process but also ensure optimal performance and aesthetics. You should sketch out your plan, indicating where the rectangular surround and

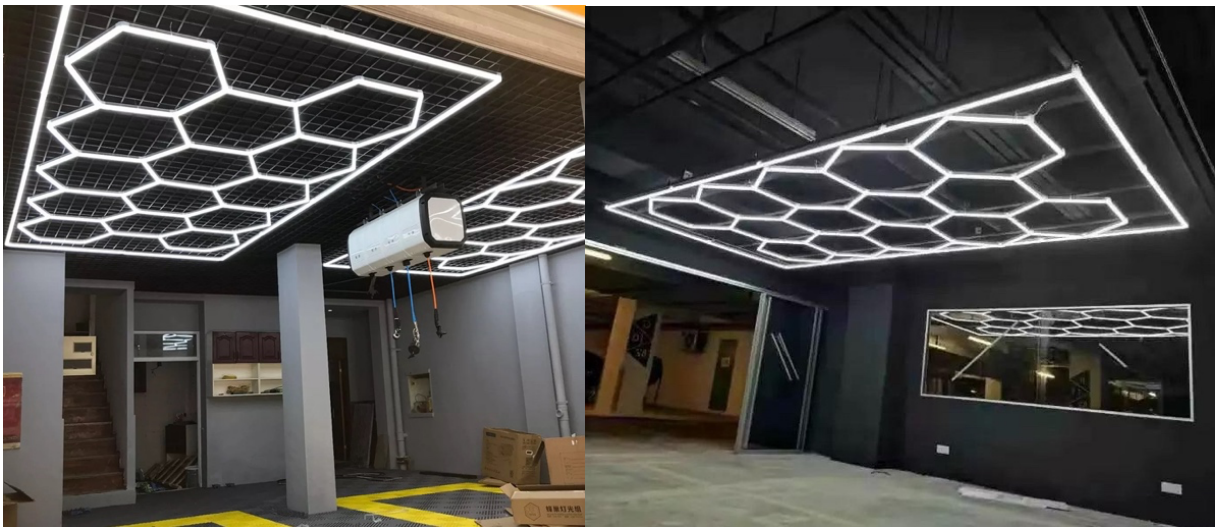
hexagonal grid will go and where the power source is located. Remember the old adage, “measure twice, cut once” – but in our case, it is “measure twice, install once.”

Each connector in your LED system has tabs with holes that can be used for mounting. You have two options here:

- **Direct Mount:** Using screws, you can directly attach the LED system to your ceiling or backing surface. Drill carefully and make sure the structure is firmly in place.



- **Suspended Mount:** If you prefer not to drill numerous holes into your ceiling or if you wish to suspend the structure from a frame or something similar, use wire or the provided zipties through the holes in the connector tabs to attach the LED system to the frame. It is not recommended to hang your LED system without directly attaching to a frame or other structure.



Clear your working area and set up a safe, stable platform to reach your ceiling or the surface where the lights will be installed.

Step 3: Assemble the Rectangular Surround

Using the "L" and "Straight" connectors, and the one "T" connector, connect the 24 - 22.25" Aluminum and Polycarbonate LED Light Tubes to form the rectangular outer border (8 tubes per side, 4 per end). During installation, pay particular attention to maintain right angles (90 degrees) at all corners and to maintain straight lines for each side.

Installation Tip: It is easier to install the light tubes into the connectors before the connectors are firmly attached to a backing surface.

CAUTION: Do not force the connections. Patience and a light touch are key to preventing damage. All connections should be made by hand – no tools are necessary.

Step 4: Assemble the Hexagon Grid

Now, build the hexagon grid inside the rectangular frame using the "Y" and "V" connectors and the 57 - 17.25" LED Light Tubes. Ensure all connections are secure but never forced. Note that while the grid fits inside the surround, the grid and surround are not connected to each other.

Step 5: Connect to Power Supply

Attach each structure - the outer rectangle and the hexagon grid - to its own power cord pigtail. Circles in Image 1 show possible locations of the "T" connector (Rectangular Surround) and "Y" connector (Hexagon Grid) used to connect the pigtails. We strongly recommend that you engage a licensed electrician to handle the connection of the pigtails to your electrical system. While the setup is relatively straightforward, working with electricity can be dangerous if not done correctly. A professional will ensure everything is safe, up to code, and working optimally.

REMEMBER:

- Sketch your desired layout before assembly.
- Check your measurements.
- Patience is key—do not rush the process, especially when making connections.
- Always switch off the power source when connecting power cords.

Congratulations! You've successfully installed your LED Hexagon Lighting System. Enjoy your new, brilliantly lit workspace.

© 2022 Hilltop Conglomerate LLC dba Grease Monkey Garage
<https://greasemonkeyusa.com> | (888) 789-1853