

cozzia®

Qi[™] SE



Scan the QR code for installation

cozzia®

INSTALLATION MANUAL | CZ-711/Qi SE

Hello.

Congratulations on purchasing your new COZZIA CZ-711/Qi SE.

At COZZIA, we understand every body is different and have carefully designed our massage chair with that in mind. But enough about us, this is about you. Learning how to use your new chair is simple (we designed it that way).

So let's get started.

Assembly Instructions

CZ-711 Massage chair arrives in 3 boxes.



- 1 **Open box 1 and remove all contents.** Remove the packing materials. Take the chair out of the box. Collect all the accessories and put them aside.



2 Adjust chair position. Use the power cord to connect the chair to the power supply and turn on the power switch. The chair will go back to home position. Then disconnect the power cord.



3 Open box 3 with footrest. Take out footrest and remove the cotter pin and bolt and put aside.



4 Remove cotter pins and bolts from chair base. Locate the two cotter pins and bolts on the chair base. Take them off and put them aside, then take off the cable ties to release the link rod.



5 Connect footrest to base. Move footrest closer to the chair. Engage the link rod with footrest joint. Then insert the bolt and lock with the cotter pin.



6 **Connect wires in footrest.** Connect both footrest wire connectors and screw the caps tight. Then connect the air hose.

Caution: After the wire connectors have been connected the cap must be screwed tight.



Here is what the four pin connectors look like.



Here is what the eight pin connectors look like.



Here is what it should look like with all wires connected.

7 **Fully connect footrest to base.** Move the footrest closer to the chair. Engage the joints of the footrest and the base. Lift footrest up to align the holes on the joints, then insert the bolt and lock it with cotter pin (that you had set aside).



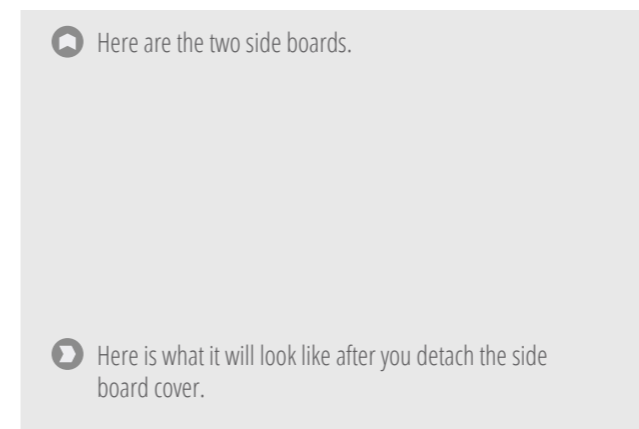
8 **Open box 2 with side boards.** Take out the side boards. Detach the cover from the side board.



Here are the two side boards.



Here is how you detach the side board cover.



Here is what it will look like after you detach the side board cover.



9 **Attach the right side board.** Remove the cable tie to release the air hose first. Then fix the five double-threaded screws onto the frame.

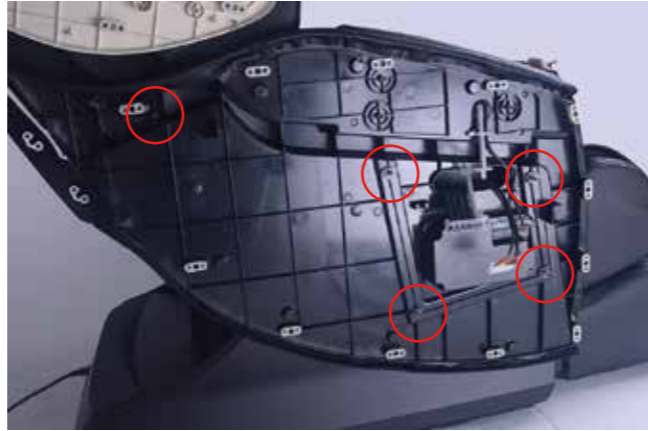
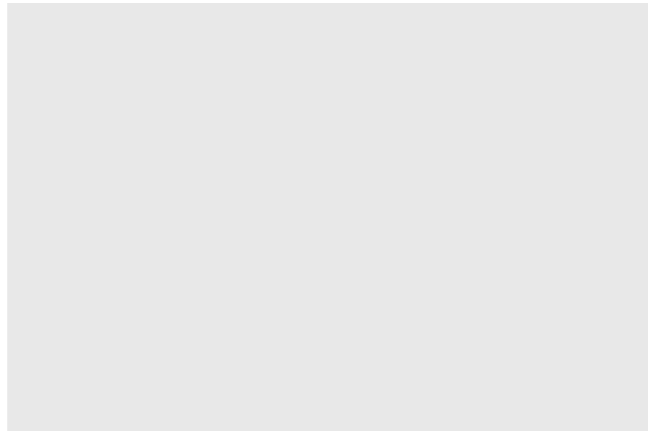


Here is the cable tie you are to cut off.

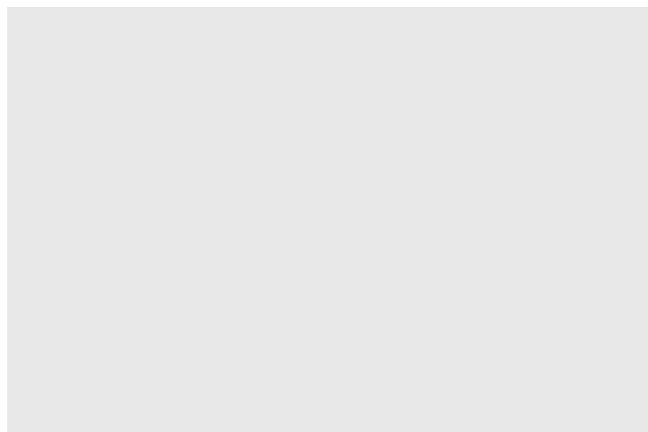


Here is what it will look like once you have fastened in the double-threaded screws.

10 Attach the right side board cont. Move the right side board close to the chair. Route the air hose and wire through the hole of the side board. Then fix the side board with screw nut and washer.



11 Connect all wires in the right side board. Connect the wire connector and five way air hose to the side board. Then connect the one way air hose.



Here is the wire connector.

Here is the five way air hose.



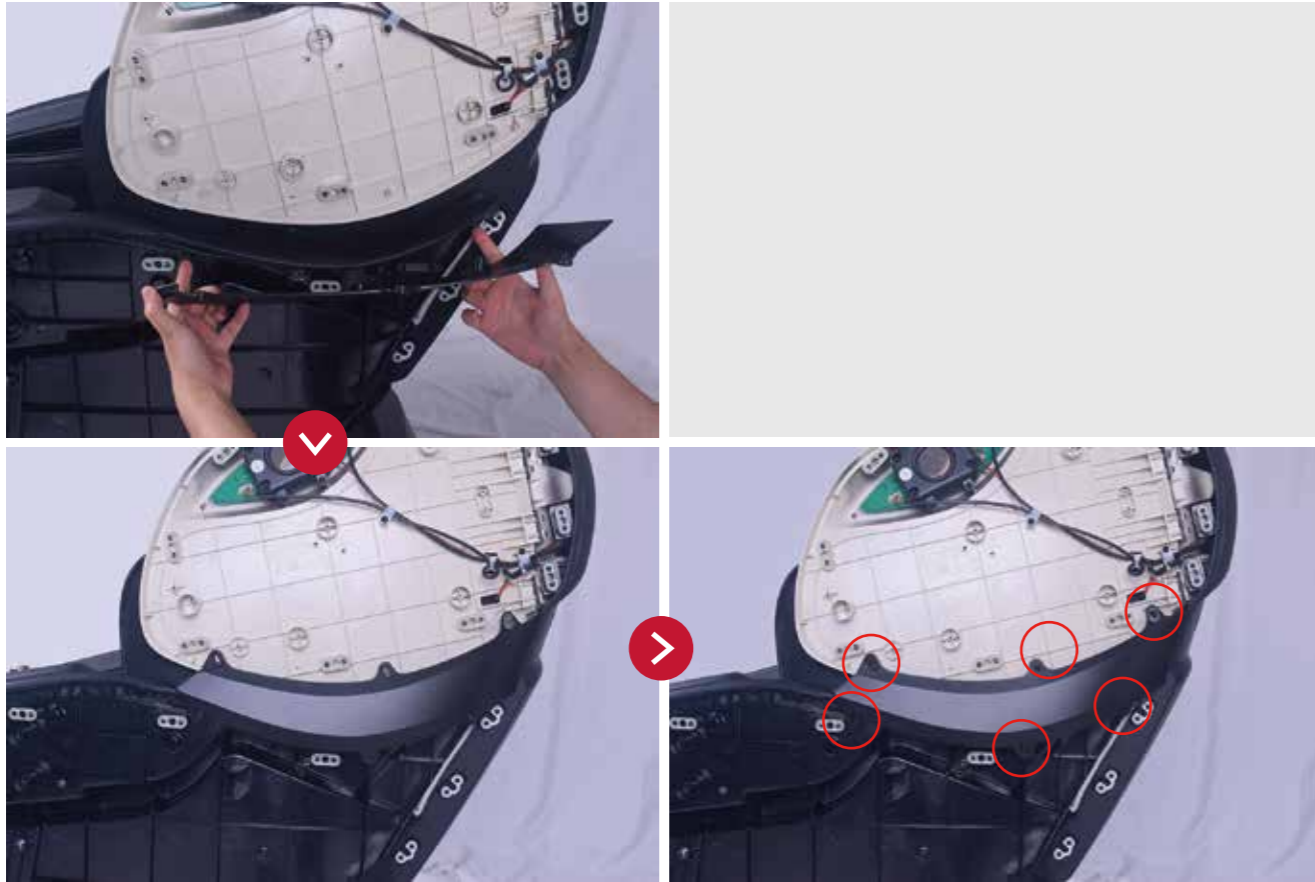
Here is the one way air hose.

Here is what it will look like with all the wires connected.

12 Attach the left side board cont. Repeat 9,10,11 to fix the left side board onto the chair. And please note that left side board only has one way air hose.



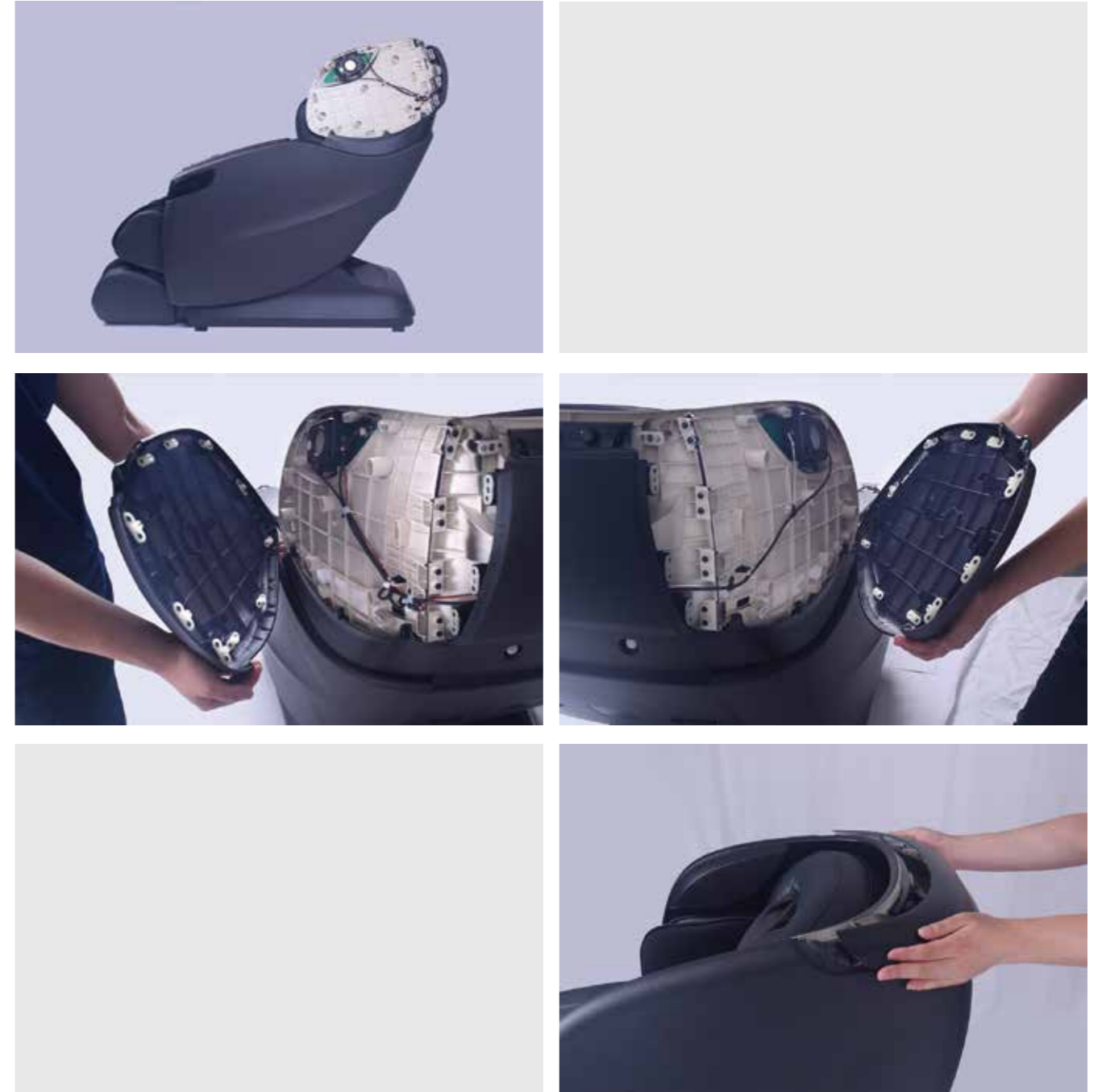
13 Assemble the decoration strip. First, attach the decoration strip. Then fix it with six cross recessed pan head screws.



14 Attach the side board covers. There are two pillars on the side board and two pillars on the side board cover. Move the side board cover close to the side board and align the snap joints. Pinch the lower side board to connect. Then knock the edge of the side board cover to make all the snap joints are clamped.



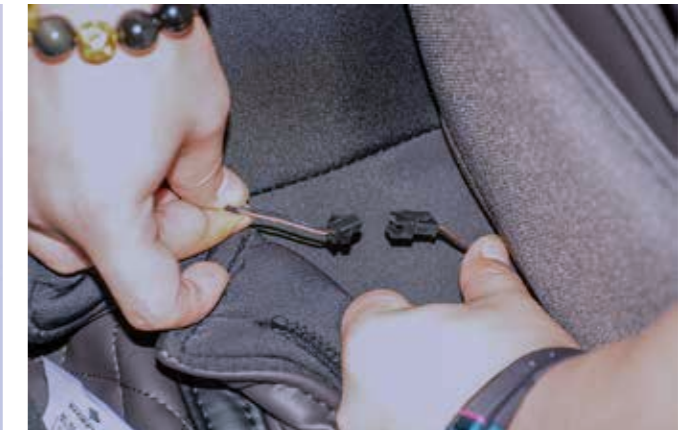
15 Attach the speaker covers. These are also attached by snap joints. Attach the side covers first, then the decoration strip on the top.



16 Attach the remote control holder. Remove the screw first, then fix the remote control holder onto the armrest. Secure it with the screw nut. Then attach the touch-pad on to the holder.



17 Attach the backrest pad to the backrest. Zip the zipper on top of the backrest. Then fix the elastics of the backrest pad to the backrest.



18 Attach the seat pad. Zip the three zippers to fix the seat pad onto the base. Then zip the zipper between seat pad and footrest cushion.



19 Turn on the chair. Connect the chair to power supply and turn on the power switch. The chair will now be ready to start.

