

End-User License Agreement (EULA)

Last updated: 27/09/2022

Please read this End-User License Agreement ("Agreement") carefully before using The eDrum Workshop expansion programming, audio samples, documentation and updates provided to you by The eDrum Workshop (collectively the "Product"). By purchasing a Product from The eDrum Workshop, you consent to the terms of this Agreement.

License

The eDrum Workshop grants you an exclusive, non-transferable, non-sub licensable limited right to download and use the Product solely for your personal, non-commercial use on a single computer and/or compatible drum module.

Restrictions

You agree not to, and you will not permit others to:

license, copy, reproduce, resell, rent, distribute, transmit, host, translate (into any language, computer or natural), or otherwise commercially exploit the Product or make the Product available to any third party. The eDrum Workshop reserves all rights in the Product not expressly granted herein, including ownership and proprietary rights.

License restrictions: You may not reproduce or distribute the Product. You may not copy the Product to any media, server or location for distribution or reproduction. You may not attempt to derive the source code of the product in any way, including but not limited to decompiling, disassembling or reverse-engineering. You may not sublicense or transfer the rights to the Product, including but not limited to reselling, renting, leasing or lending. The restrictions contained herein apply to any and all updates provided by The eDrum Workshop.

At a glance

✓	✗
Recorded music, recorded performance audio and video, other "finished" recordings where individual audio samples cannot be extracted	Extracting individual audio files or samples to distribute, share, sell or reuse in another format than which it was sold
Live performances	Selling, loaning, sharing or distributing the Product files in any way

Limitation of Liability

In no event shall The eDrum Workshop be held liable to you or any third party for any costs or damages arising directly or indirectly from the use of the Product, including but not limited to actual, incidental, consequential or special damages, or for any loss of revenue, profits or data arising in any manner from any action or cause related to this Agreement or the Product.

You acknowledge that you have read this Agreement and understand that, by purchasing and/or using the Product, you agree to be bound by its terms and conditions.

The eDrum Workshop products are the Intellectual Property of The eDrum Workshop.

Thank you for downloading this collection
from The eDrum Workshop!



Please update to TD-17 program version 1.02 before installing these kits. Instructions for this can be found on page 3.

BEFORE PROCEEDING, PLEASE REFER TO THE ROLAND TD-17 REFERENCE MANUAL TO FAMILIARISE YOURSELF WITH SD CARD SETUP

SD CARD Formatting instructions can be found on **page 22** of your *TD-17 Owner's Manual*. This will create the correct file structure on your SD card for the TD-17 to read.

Please create a backup of your module data before commencing. Instructions for this can be found on **page 21** of your *TD-17 Owner's Manual* or **page 6** of this manual.

***These kits are ONLY for the Roland TD-17 module.
Common troubleshooting support can be found on page 9.***

Contents

End License User Agreement (EULA)	1
Introduction & Contents	2
Before You Begin - Update Your Module & Kit Variations for "AUX" Assignment	3
Loading the Kit Files (.TDO) to Your SD Card	4
Loading the Kits to Your TD-17 Module	5
Memory Management	6
Collection Notes from Luke	7
Individual Kit Notes from Luke	8
Common Troubleshooting	9

UPDATE TO TD-17 MODULE SYSTEM VERSION 1.02 (or above)

This kit or kit collection from The eDrum Workshop was created on a Roland TD-17 running system program version 1.02. Due to this, you may not be able to load these kits on a TD-17 module that is running a previous program version. The update, which is free from Roland, fixes some bugs and adds additional pad compatibility. Please update your module by following the link below and carefully following all instructions given on the Roland pages.

https://www.roland.com/us/support/by_product/td-17/updates_drivers/

The eDrum Workshop cannot accept any liability for any loss or damage resulting from any updates provided by Roland support. Please see their instructions and END USER LICENSE AGREEMENT for the download files for more information.

Before You Begin - Kit Variations for "AUX" Instruments

Due to the varying setups and requests of many customers, this collection has been designed with two configurations to cover the most common AUX pad setups. To give you the choice of installing a pack which more closely aligns with your personal pad setup, **two versions of the kit files** are included in separate folders -

AUX Pad Cymbal

AUX Pad Tom

If you would prefer to have a cymbal assigned to the AUX input, copy the .TD0 files inside the "***AUX Pad Cymbal***" folder to your SD card. If you wish to retain consistency with older packs from *The eDW*, it is recommended that you install these files as many early packs by *The eDrum Workshop* were configured with a cymbal on the AUX pad input.

If you would prefer to have a fourth tom located on the AUX input, copy the .TD0 files inside the "***AUX Pad Tom***" folder to your SD card.

The installation guide on the next pages will direct you through the steps to install your chosen setup.

Notes

Don't worry - you aren't missing out on any instruments when choosing your pad setup! If you choose the ***AUX Pad Tom*** files, the cymbal is assigned to the rim of Tom 2. If you choose the ***AUX Pad Cymbal*** files, the additional floor tom will be assigned to the rim of Tom 3.

If you do not have a pad plugged into the AUX pad input, you can select either set of files to install. You may want to choose the files based on any upgrades you have planned for the future (eg. additional toms or cymbals). The instrument assignments of each set of files differ - check **page 8** for pad assignment information.

Loading both sets of kits is *not recommended*. Doing so may use up double the user sample memory if you do not deselect the "With User Sample " check box. There is also a possibility that the samples may not line up with the correct kits or pads on both versions and may need to be reassigned manually. **Choosing your preferred version based on how you use your pad setup is recommended.**

Loading the Kit Files (.TDO) to Your SD Card

If you would prefer a video demonstration of the kit loading process, you can watch now on The eDrum Workshop YouTube channel here - <https://www.youtube.com/watch?v=c6C6YR2Dpcw>

The kit files (.TDO file) for The eDW Slated Room Collection start at kit number 144 (KIT-144.TDO) - this is to prevent clashes with any other previously purchased eDW kit packs or those from other vendors. You must scroll up to this kit number or higher when importing to find these kits.

Note: You can rename the ".TDO" files if you wish to prevent scrolling all the way up to this number, but they must remain in the *KIT-XXX.TDO* format, otherwise the TD-17 cannot read them. Only the numbers can be changed, not the .TDO extension or the "KIT-" part of the filename. Unless you have other kits saved to slots 144 upwards on your SD Card, **it is advised** to leave these as is.

1) Unzip the *eDW 10-6Wild TD-17.zip* file to a location on your computer

2) Insert the SD Card into your computer's reader

3) Open the **Roland > TD-17 > Kit** folder

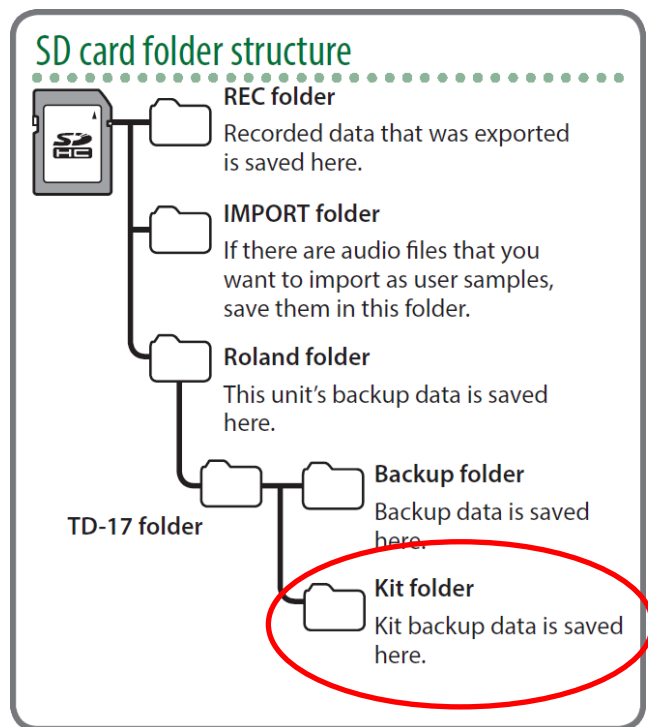
4) Within your unzipped "*eDW 10-6Wild TD-17*" folder, open the appropriate folder for your chosen pad configuration -

AUX Pad Cymbal

AUX Pad Tom

and *copy or drag* the KIT-148.TDO and KIT-149.TDO files to the **Kit** folder on the SD Card

5) Safely remove the SD card from your computer when finished



Place .TDO files inside
this folder

Loading the Kits to Your TD-17 Module

Please note: When fully loaded, these kits take up approximately **8%** of the user sample memory of a TD-17 module. Please ensure that you have enough user sample memory free to import the samples contained. **See the Memory Management on page 6 or Common Troubleshooting solutions on page 9 for more information.**

- 1) Insert your SD Card into the TD-17 module and turn it on
- 2) Press the **[OTHER]** button on the right of the module
- 3) On software v1.xx, press the **[DOWN]** arrow twice, then use the middle function **[F2]** button to select **SAVE/LOAD**

or

On software v2.xx, press the **[DOWN]** arrow three times, then use the left function **[F1]** button to select **SAVE/LOAD**

- 4) Use the middle function button **[F2]** to select the **LOAD** menu

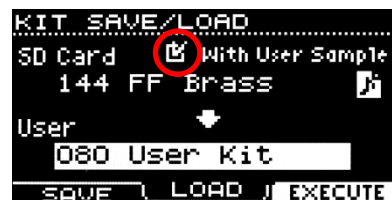
- 5) Press the **[DOWN]** arrow to select the kit number and scroll to kit "148 10-6 Wild" using the dial

If you do not see the name of the kit as well as the kit number on the SD Card line, you may be on the *wrong kit number*, the files may not be *in the correct folder* or there may be an issue with your SD card



- 6) Ensure that the "With User Sample" box above the "SD Card" line is checked

If you cannot check this box, you may be on the *wrong kit number* or the *files may be in the wrong folder*, as all kits in this pack contain user samples. This should be checked by default when you select the correct kit number, but if not, use the UP arrow to highlight it and use the dial to check the box. Importing these kits without the user samples will result in some instruments not sounding or playing correctly



- 7) Press **[DOWN]** and select which kit slot to load this kit to (from 1 - 100) with the dial. Ideally, *select an empty or "User Kit" slot*, unless you are happy to replace an existing kit
- 8) Press the right function button **[F3]** to **EXECUTE**. This will prompt a message - "Load 1 Kit from SD Card. Are you sure?" - push the **[ENTER]** button to load the kit
- 9) There will be a "✓Completed!" message when it has finished loading
- 10) Repeat steps **2)** to **8)** again for kit "149 10-6 Wild SnX"
- 11) Upon completion, it will automatically take you to the last kit you loaded - scroll to the kit you would like to play first!

Your kits should now be ready to use!

Memory Management

When fully loaded, the kits in this collection take up a portion of the User Sample memory on the TD-17 module - approx. **8%** across the two .TD0 files contained. *If you would like to install all of the kits*, check that you have *at least 9%* of the User Sample memory remaining before installing to ensure that the installation is successful. You can check this by following these steps -

Check User Sample Memory

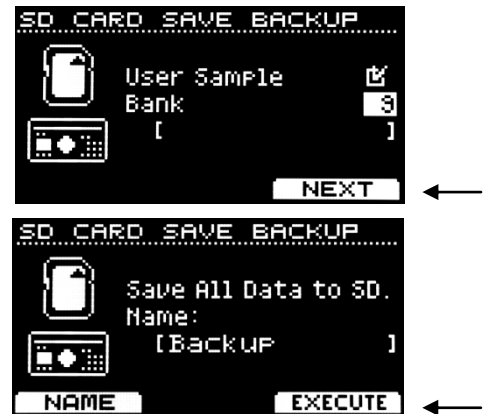
- 1) Press the [USER SAMPLE] button on the right of the module
- 2) Look in the top right hand corner for the "REMAIN: %" and ensure that it is 9% or greater



If you do not have sufficient memory available, you can choose to install only one of the kits or you can delete some user samples. Before deleting user samples, it is recommended to **create a full backup** of your module data on to your SD card -

Full module backup

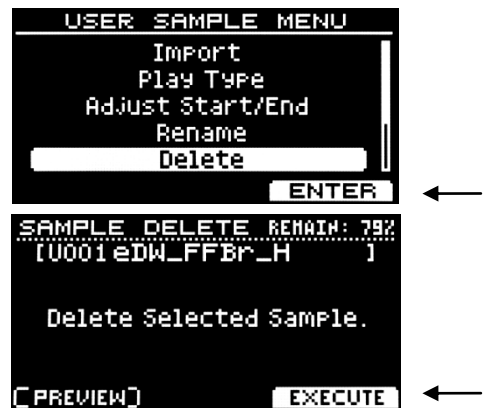
- 1) Ensure that your SD card is correctly inserted into the module
- 2) Press the [SETUP] button, followed by the [DOWN] arrow to highlight "SD Card" and press [ENTER] or [F3] to access the SD Card menu
- 3) Ensure that you are on the first line labelled "Save Backup" and press [ENTER] or [F3] to access the SD Card Save Backup menu
- 4) Ensure that the *With User Sample* box is checked using the dial
- 5) Press [DOWN] and select a bank number to save your backup to - use a free slot to avoid overwriting a previous backup
- 6) Press the [F3] NEXT button to progress to the next screen
- 7) Press the [F1] button to assign a memorable name to the backup (*see pg. 18 of the TD-17 Owner's Manual for more information on the name editing process*), then press [F3] OK to return to the save screen
- 8) Press [F3] to EXECUTE your backup - you will be prompted to confirm your choice, press [ENTER] to confirm



You can now delete any user samples you do not wish to keep from the **USER SAMPLE** menu to make space, knowing that you can [LOAD] the previous backup if any mistakes are made or you wish to restore the previous settings. *Overwriting a kit that contains user samples will not delete the associated samples, they must be deleted manually if you want to remove them.*

Deleting User Samples

- 1) Press [USER SAMPLE] to access the User Sample menu and use the dial to highlight the sample you wish to delete
- 2) Press the [F2] MENU button, then use the dial or [DOWN] arrow button to highlight "Delete" and press [ENTER] or [F3]
- 3) On the next screen, check the sample name at the top is correct, then press [F3] EXECUTE. You will be prompted "Are you sure?" - press [ENTER] to confirm



Collection Notes from Luke

Each kit has a unique set of user samples for the snare head & rim zones. User samples can make an instrument a little more prone to the "machine gun" effect that electronic drums can be known for, however if you try turning off the user samples, you will notice how much extra life they bring to the kits. A lot of care and attention has been put into how the samples are utilised with the fade curves and different layered sounds to create the most natural playing experience possible.

The user samples are named with this convention -

eDW_10-6W_H

eDW_ - identifies that this is a sample from The eDrum Workshop

[Kit] - identifies which kit the sample belongs to

_H or _R - distinguishes the instrument and "head" or "rim" samples (if applicable)

Note: If you load a kit multiple times from your SD card, it may import the samples again each time. To avoid this taking up additional space on your module, you can delete the duplicate samples and re-assign the first copy of them onto the newly loaded kits.*

This collection has been primarily designed to be played at home with headphones. If you do use these kits live at a gig, I would recommend bringing down the ambience knob - either completely off, or to a reasonably low level. Additional ambience can quickly make your sound muddy when coming through a speaker system, especially in a large room. This may also apply in varying degrees to running your kit through amplification at home or in a rehearsal room - such as through a drum amp or a PA speaker or monitor. If you do want some ambience through the speakers, it is best to start with the ambience off, bring it up until it begins to sound muddy, then dial it back a bit.

The **LoFi Compressor MULTI FX** is used on these kits to mimic the use of a normal compressor. This adds depth to make sure they hit harder, but it does also slightly change the way the dynamics of the pads react - the ghost notes may be a little bit louder than other kits that don't use this. The overall effect is quite subtle, but if you find that they feel or react in a way you don't like dynamically, you can go into the **[OTHER]** button settings, press the middle function button **[F2]** to choose **MULTI FX** and press the right-hand button **[F3]** to uncheck the **ON** box to turn the FX **OFF**. This will make them play a little more naturally but at the expense of losing a some of the weight of the sound. There might be a drop in volume when you turn the FX off too.

The volume of these kits may be louder than that of the stock kits. If you want to volume match these kits to the ones already in your module, you can open up the **[OTHER]** settings, press the **[DOWN]** arrow and select the **VOLUME** setting with **[F1]**. In this menu, you can turn the "Kit Volume" up or down to taste on either these kits or the other kits you use on your module.

The "XStick Volume" (cross-stick) and "Pedal HH Volume" (hi-hat foot pedal) may have been changed in the **[OTHER] > VOLUME** menu to more closely match the production style. If these are not to your liking, you can adjust them here to match other kits on your module.

*Please see **page 15** of the TD-17 User Manual for instructions on how to assign user samples.

Note: Make sure to disable the H&R (head and rim) button when reassigning samples so that you can set the head and rim samples independently of each other where appropriate - denoted by "_H" and "_R" in the filenames.

Kit Notes from Luke

All samples contained in the *Slated Room Collection* were recorded by Luke (*The eDrum Workshop*) and producer James Routh (*StarStuff Music*) in the slated drum room at *Rock Hard Studios* in Lancashire, England. The room's hard, reflective ambience colours the sonic image with a unique character that ties all of these kits together and inspired the modelling used onboard the module.

Samples were taken from each snare with the wires disengaged and assigned as a "strainer off" instrument on the **SnX** variation of each kit.

10-6 Wild

These kits contain snare samples from a DW 14" x 5" Collectors Series 10+6 maple snare drum with some slight detuning and an old drum head, resulting in a wild and unruly sound character. With a powerful kick, resonant toms, trashy cymbals and a bright and brittle studio ambience, these kits will take you for a ride.

Ambience & MFX control

To give you the option of customising your preferred sound, the Ambience and MultiFX settings have been set up to sound and play well whether they are turned on or off. If you turn the **AMBIENCE** dial down entirely, the kit will be more "up front" sounding, as if the kit has been mixed with only direct microphones on each drum and minimal overhead microphones. Turning up the **AMBIENCE** dial will add more room sound, brighten or thicken the mix and increase the stereo depth. Turning the **Lo-fi Compressor MultiFX** off will soften the overall character of the kit, making it respond more "naturally" in dynamics, but you may notice a drop in volume and punch. The MultiFX is on by default and the recommended **AMBIENCE** dial setting for a natural room sound is around 60% (or the "1 o'clock" position).

Enjoy playing!

Common Troubleshooting

Make sure to select LOAD [F2] from the SAVE/LOAD menu, not the SAVE option to import the kits! Using the wrong function will override the kit on your SD card. Reload the kits to your SD card if this happens.

I don't see The eDrum Workshop kits in the SAVE/LOAD page - When the kits are correctly added to the SD card, you will see the name of the kits at the correct kit slot on the SD card line of your module (eg. 148 10-6 Wild). If you see no kit name, ensure that the SD card has been formatted to the module's standard, as described earlier in this guide. Then, ensure the kits are placed in the correct folder on your SD card (**Roland > TD-17 > Kit**). Do not change the .TDO file type or the formatting of the file names - they must be in the **KIT-XXX.TDO** format. Check that your SD card is working correctly with other module functions (such as the backup options) to ensure it is not a problem with your SD card.

Remember - The kits in The eDW Slated Room Collection start from kit numbers 144 onwards. This is to avoid conflicts of file names and kit numbers with other backups you have made or kits you have purchased elsewhere. You **must scroll up** to this number to find the kits using the dial.

I get the message "User Sample Memory Full" when loading - As these kits use user samples for the sounds, you must have enough room to import these when loading the kits. Ensure there is space on your module by going to the **USER SAMPLE** page and checking the **REMAIN: %** in the top right corner. You can delete other user samples from this screen - see **page 6** of this guide for more details.

The kits sound weak or weird, not like the demos - Make sure that the "With User Sample" box is **checked** when importing the kits - these kits rely heavily on the added tone and punch given by the user samples. Without them, the snares will sound very different as only the instrument parameters will have been loaded. You can reload the kits from your SD card if necessary.

If the box appears like this and *cannot be checked*, you may be on the wrong kit number - make sure to scroll up to at least kit "148 10-6 Wild". If you do not see this name at kit 148, check your SD card is compatible and has copied the files correctly to the right directory.

I changed some settings and now I get strange behaviour on the rim zone - Some kits may have different settings for the head and rim zones, such as different "Fade" parameters, EQ or other settings. When making edits to the **INST SUB** functions, use the **H&R** setting [F1] to swap between editing both zones together or independent zone edits. When editing pads that have different instruments or samples on head and rim zones, it is recommended to turn **H&R** editing off so that you do not accidentally change the wrong instrument or swap it to something else. If you struggle to return the kits to their original sounds, reload them from the SD card.

It sounds like the samples are "cutting off" whilst playing - Ensure that the samples are in **ONESHOT POLY** play type on the **USER SAMPLE > MENU [F2] > Play Type** screen. The samples should import on the **ONESHOT POLY** mode automatically when you install the kits - however, if you see **ONESHOT MONO** or **LOOP ALT** as the *Play Type* of your sample, use the dial to swap to the correct setting. The **ONESHOT MONO** setting will cause the sample to end and restart with every consecutive hit and the **LOOP ALT** setting will cause the sample to start on one hit and end on another if it has not already ended. These will cause unwanted interruptions in the sounding of your samples.