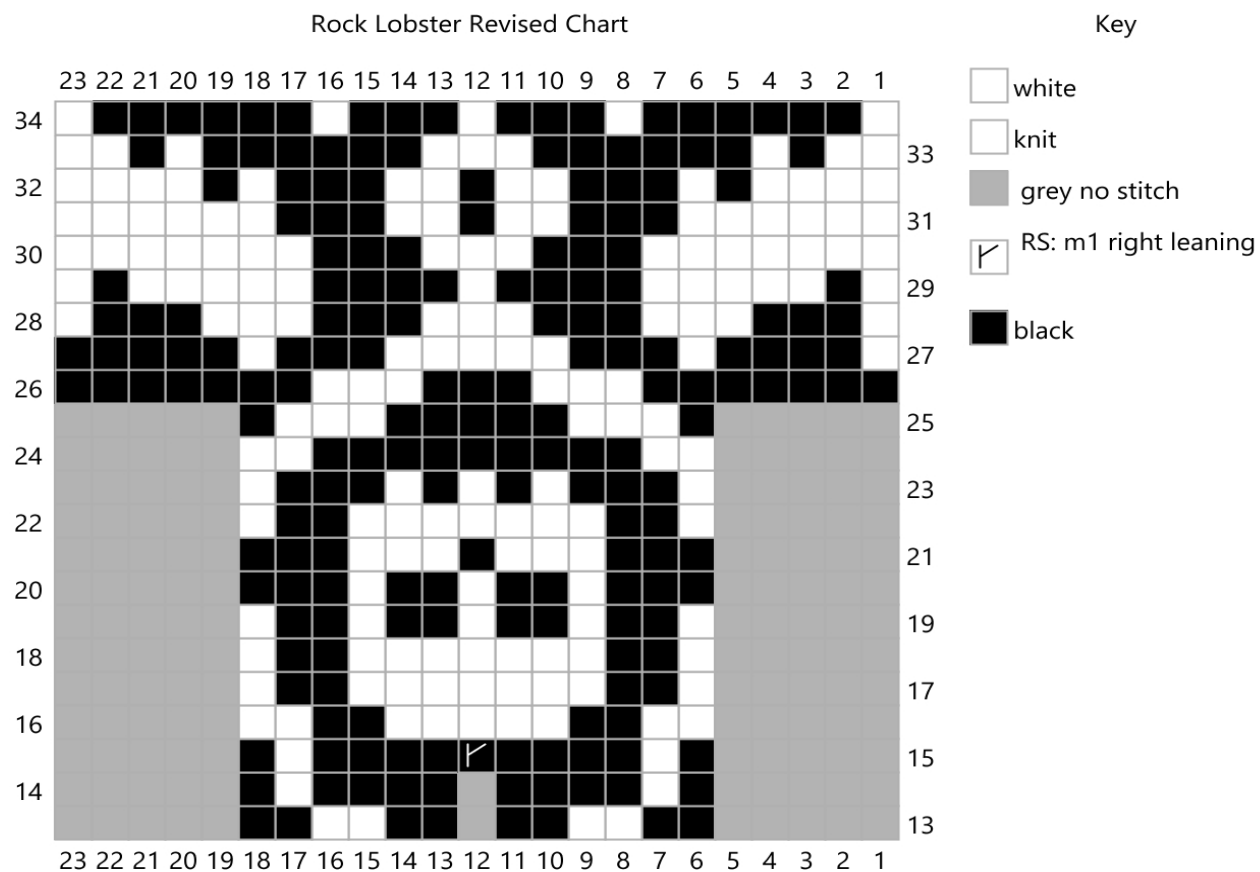


Rock Lobster Revised Chart



You will need to have the original colorwork chart from **Rock the Lobster** by Connie Peng (Yellowcosmos on Ravelry) to fill in the first 13 rows of the chart and the grey stitch sections on either side of the skull.

Additional incorporations:

- Skull diagram is from **Moriarty skull tie square** a free pattern by Tov Backhammer on Ravelry
- Bat is an altered version of the **Bat Candle Holder** a free pattern by MillaMia Sweden on Ravelry

Please do not ask me for a completed version of this chart or for any additional help in chart alterations. For a more detailed look at fit alterations you may visit my project page on Ravelry.