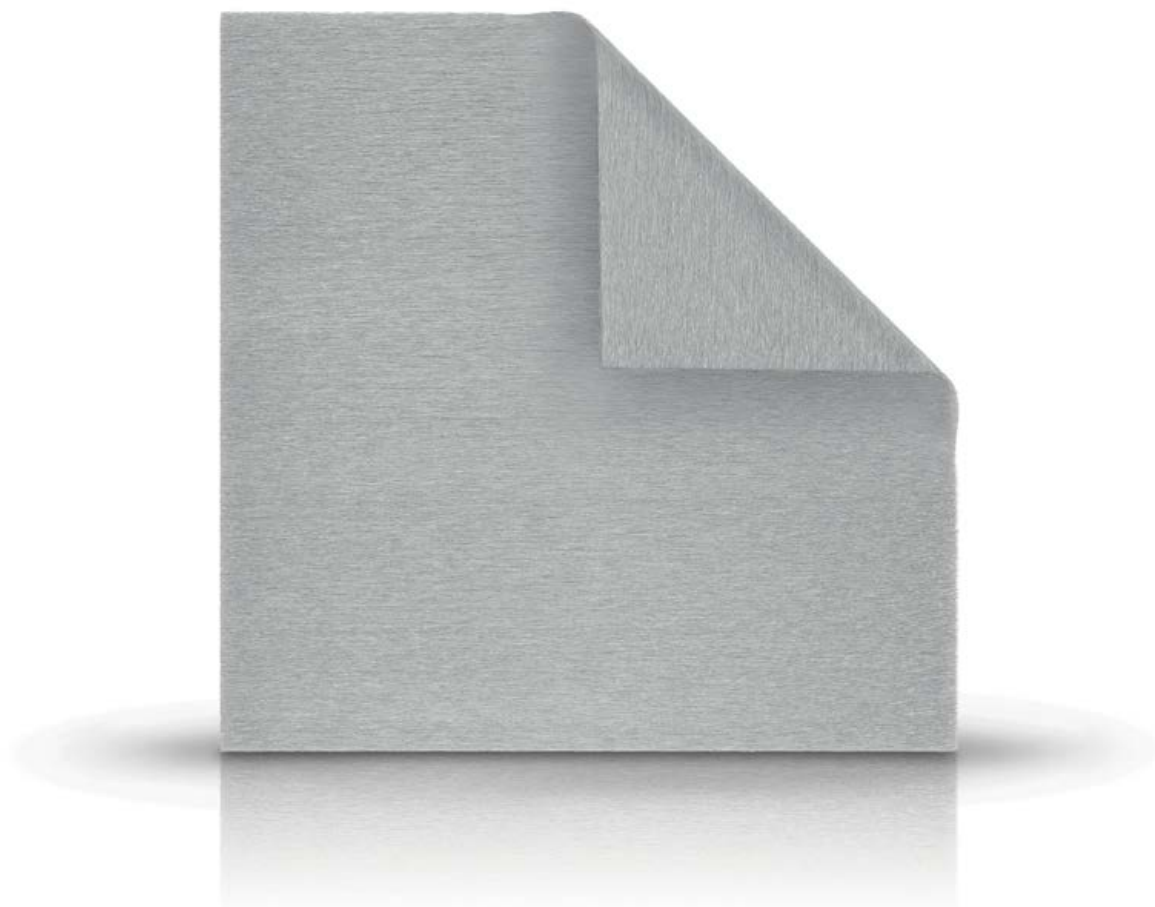


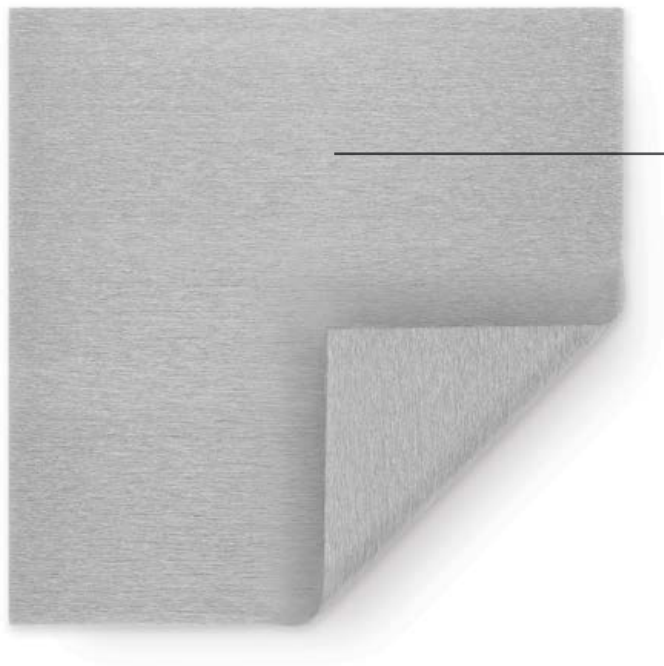
SILVERCEL™
ANTIMICROBIAL ALGINATE DRESSING

Long-lasting **antimicrobial** protection



WHAT IS IT?

SILVERCEL™ Dressing is a sterile, non-woven pad composed of high G (guluronic acid) alginate, carboxymethylcellulose (CMC) and silver coated nylon fibers.



Non-woven pad composed of:

- Alginate (high G fibers)
- CMC
- Silver coated nylon fibers

HOW DOES IT WORK?

Exudate management

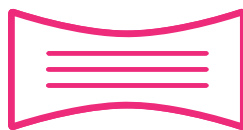
The unique composition of the dressing manages exudate in moderate to heavily exuding wounds, promoting a favorable environment for effective wound management.

In an *in vivo* wound model study comparing...

The performance of SILVERCEL™ Dressing and Aquacel® Ag, SILVERCEL™ Dressing was substantially more effective in the management of wound exudate¹.

Tensile strength

SILVERCEL™ Dressing increases its tensile strength when in contact with wound exudate, allowing for intact removal².



Tensile strength increased by

56%

when wet compared to dry

Antimicrobial action

SILVERCEL™ Dressing provides a sustained release of silver within the dressing for up to 7 days, allowing for an effective antimicrobial protection for the entire wear time, depending on the level of exudate³.



Effective against more than

150

wound pathogens²

Clinical evidence

In vitro study comparing SILVERCEL™ Dressing to Aquacel® Ag showed¹:

- On exposure to high levels of wound exudate, SILVERCEL™ Dressing retained its shape and mechanical strength and remained at the site of application
- SILVERCEL™ Dressing was significantly more effective in the management of wound exudate than Aquacel® Ag¹
- Wounds managed with Aquacel® Ag presented a higher level of trapped dressing debris, which led to foreign body reaction and a noticeably higher mean wound-tissue disruption score

A retrospective multi-center case series study (n=76) reported that 88% of the patients improved or healed after 33 days⁴.

Stage 2 PUs (n=57): At baseline 70% of patients reported some form of pain (n=40), while after 33 days pain scores were significantly reduced, with 48% of patients (n=27) experiencing some form of pain, a decrease of 33%.

95% of the total patient number rated the test dressing as very comfortable/comfortable.

99% of the clinicians involved rated the test dressing as very good/good.



88%

of the patients improved or healed



95%

of the patients rated SILVERCEL™ Dressing as very comfortable/comfortable



99%

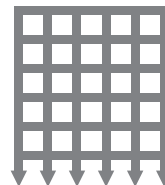
of the clinicians rated SILVERCEL™ Dressing as very good/good

WHEN TO USE IT

SILVERCEL™ Dressing is intended for use in the management of all moderate to heavily exuding partial and full-thickness chronic wounds, including:

- Pressure injuries
- Venous ulcers
- Diabetic ulcers
- Donor sites
- Traumatic and surgical wounds

Please refer to the full instructions for use in the packaging insert.



The barrier function of SILVERCEL™ Dressing may also be suitable for use, under medical supervision, in the management of wounds in which there is an increased risk of infection.



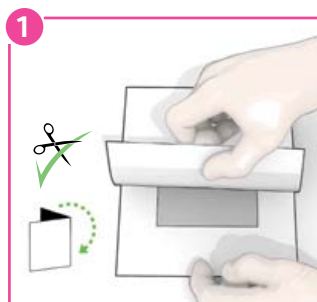
A clinical study involving the use of SILVERCEL™ Dressing in excision wounds following burns surgery found the dressing to promote a physiologically moist wound environment while also managing exudate⁵.

USER GUIDE

Before Application

Refer to the instructions for use. Select a size of SILVERCEL™ Dressing that is slightly larger than the wound. Prepare the wound according to appropriate wound management protocol. Ensure skin surrounding the wound is dry.

Dressing preparation



1. Remove the pouch from the box.
2. If necessary, cut **SILVERCEL™ Dressing** using clean scissors or fold the dressing to fit the wound.

Secondary dressing application



1. Cover and secure **SILVERCEL™ Dressing** with a non-occlusive secondary dressing from the TIELLE™ Dressing Family range, as appropriate.

Dressing application



1. Loosely pack deep wounds, ensuring the dressing does not overlap the wound margins.
2. As wound conditions improve and exudate levels decrease, moisten the dressing with normal saline solution prior to application.

Dressing change and removal



1. Reapply **SILVERCEL™ Dressing** when the secondary dressing has reached its absorbent capacity or whenever good wound care practice dictates that the dressing should be changed.
2. Gently remove the secondary dressing. If the wound appears dry, saturate the dressing with normal saline solution prior to removal.
3. Gently remove the dressing from the wound bed and discard. Irrigate the wound site prior to application of a new dressing.

To learn more about the benefits of **SILVERCEL™ Dressing** contact your Systagenix representative at **800-275-4524** or visit **acelity.com**

SILVERCEL™ Dressing			
Item code	Size	Eaches carton/box	HCPCS
800202	2" x 2"	10 ea/ct, 5 ct/bx	A6196
800404	4 1/4" x 4 1/4"	10 ea/ct, 5 ct/bx	A6197
800408	4" x 8"	5 ea/ct, 5 ct/bx	A6197
800112	1" x 12"	5 ea/ct, 5 ct/bx	A6199

NOTE: Specific indications, contraindications, warnings, precautions and safety information may exist for Systagenix products. Please consult a healthcare provider and product instructions for use prior to application. Rx only.

References

1. Bell, A. and Hart, J. Evaluation of two absorbent silver dressings in a porcine partial-thickness excisional wound model. *JWC* 2005, Vol. 14. 2. Teot L et al. The management of wounds using SILVERCEL™ Hydro-Alginate. *Wounds UK Supplement*. 2005, 1(2). 3. In vitro data on file. 4. Kammerlander, G. Et al. Clinical experiences of using a silver hydroalginate dressing in Austria, Switzerland and Germany. *J Wound Care* 2008, 17(9):384-388. 5. Di Lonardo, A. et al. The use of Silvercel® to dress excision wounds following burns surgery. *Wounds UK* 2006, Vol 2(4):122-124.

Copyright 2017 Systagenix Wound Management, Limited. All rights reserved. Aquacel is a trademark of ConvaTec, Inc. All other trademarks designated herein are proprietary to Systagenix Wound Management, Limited, its affiliates and/or licensors. LIT#SC SS • PRA000592-RO-US, EN (05/17)