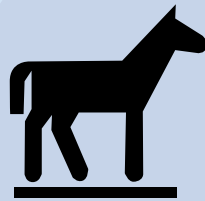




**Summit Rubber**  
*and Fitness*



***2023 Product Catalogue***

# Table of Contents

<b>Table of Contents</b>	<b>2</b>
<b>Fitness Equipment</b>	<b>4</b>
Crumb Rubber Bumper Plates	4
Echo Bumper Plates	4
Rubber Hex Dumbbells	5
Competition Kettlebells	5
<b>Squat Racks</b>	<b>6</b>
Folding Power Rack	6
X-Fit Squat Rack	6
Folding Wall Mounted Squat Rack	7
Folding Wall Mounted Rack Safety Arms	7
<b>Barbells</b>	<b>8</b>
Olympic Barbells	8
Curl Bar	8
Hex Squat Barbell	8
<b>Benches</b>	<b>9</b>
Incline Bench YETI	9
Flat Bench	9
Incline Bench Delta	10
<b>Equipment Storage</b>	<b>11</b>
Pro Dumbbell Rack	11
Dumbbell Rack	11
Vertical Dumbbell Rack	11
Bumper Plate and Barbell Rack	11
Bumper Plate Tree Rack	12
Mountain Bumper Plate and Barbell Rack	12
Wall Mounted Bar Rack	12
<b>Gym Equipment</b>	<b>13</b>
Lat Pulldown Machine	13
Wall-Mounted Pull-Up Bar	13
<b>Gym Accessories</b>	<b>14</b>
Weightlifting Drop Pads	14
Tri-Fold Plush Vinyl Mat	14
Barbell Collars	14
<b>Package Deals</b>	<b>15</b>
<b>Plates</b>	<b>15</b>
<b>Dumbbells</b>	<b>15</b>
<b>Rubber Flooring</b>	<b>16</b>
Elite Interlock	16
Elite Sport	16
Elite Pro	16

Elite Pro Clip _____	16
Elite Ultra _____	17
Elite Connect _____	17
Elite Performance _____	17
Rolled Flooring _____	18
<b>Flooring Finishing Products _____</b>	<b>18</b>
Elite Transition Strip _____	19
8-10 mm Rubber Transition _____	19
ProTac Double Sided Flooring Tape _____	19
<b>Stall Mats _____</b>	<b>20</b>
Crossfit Stall Mat _____	20
Max G _____	20
Red Barn Stall Mats _____	20
Second Grade Red Barn Stall Mats _____	20
<b><i>Anti-Fatigue Matting</i> _____</b>	<b>21</b>
Waterhog Mat _____	21
Rubber Bubble Mat _____	21
Beveled Drainage Mat _____	22
Scraper Entry Mat _____	22
Interlocking Wash Mat _____	22
Boot Scraper _____	22
<b><i>Traffic Control</i> _____</b>	<b>23</b>
Traffic Delineator _____	23
Traffic Delineator Base _____	23
Traffic Cones _____	23
Rubber Parking Curb _____	24
Rubber Speed Bump _____	24
Rubber Speedbump Endcap _____	24
Rebar Spikes _____	25
TC-54 Barrel Base _____	25
Control Base _____	25
<b><i>Contact Us</i> _____</b>	<b>25</b>
Front Office: _____	25
Commercial Sales: _____	26
Fitness Sales: _____	26
Our Location _____	26

# Fitness Equipment

---

## Crumb Rubber Bumper Plates

### Sizes

- 10 lb
  - 15 lb
  - 25 lb
  - 35 lb
  - 45 lb
- Crumb rubber composition with blue fleck
  - Hi-Temp construction
  - Steel ring insert
  - 17.5" diameter
  - Plates range from 1.5" to 3.15" thick
  - One-year manufacturer defect warranty for 25-45lbs
  - Three-month manufacturer defect warranty for 10-15 lbs



## Echo Bumper Plates

### Sizes

- 2.5 lb
  - 5 lb
  - 10 lb
  - 15 lb
  - 25 lb
  - 35 lb
  - 45 lb
- Steel based with a thick rubber coating
  - Steel ring insert
  - 17.5" diameter
  - Plates range from 1.5" to 3.15" thick
  - One-year manufacturer defect warranty for 25-45lbs
  - Three-month manufacturer defect warranty for 10-15 lbs



## Rubber Hex Dumbbells

- Knurled steel handle with durable rubber coating
- 10" to 14" long depending on weight
- 90-day manufacturer defect warranty
- Available Weights (Lbs):  
5, 10, 12, 15, 20, 25, 30, 35,  
40, 45, 50, 55, 60, 65, 70,  
75, 80, 85, 90, 95, 100



## Competition Kettlebells

- Cast steel construction
- Machined-flat base
- Colours: Blue, Red, Yellow, Purple, Lime Green, Black
- 8" x 8" x 11"
- All weights are the same size
- Storage rack available
- Available Weights (kg):  
4, 6, 8, 10, 12, 14, 16, 18,  
20, 24, 28, 30, 32



# Squat Racks

---

## Folding Power Rack

- 48" L x 50" W x 90.5" H
- 142 kg Black powder-coated finish
- Made with 11-gauge steel
- Built in lat-pulldown and row machine
- Folding arms
- J-Hooks included
- Plate storage pegs included



## X-Fit Squat Rack

- 94" x 72" x 47.5"
- 174 lbs
- Black powder-coated finish
- Made with 11-gauge steel
- 2.5" x 2.5" Uprights
- 11-gauge steel
- J-hooks included
- Safety Arms and Dip/ plate storage pegs included



## Folding Wall Mounted Squat Rack

- 48.5" w x 25" l x 91" h
- 176 lbs
- Black powder-coated finish
- Made with 11-gauge steel
- 3" x 3" Uprights
- 11-gauge steel
- Stringer plates: 55" wide, adjustable height for mounting
- 43" inside post to post



## Folding Wall Mounted Rack Safety Arms

- Black powder-coated finish
- Made with 11-gauge steel
- UHMW lined for barbell protection
- Hitch Pins included
- Impact area measures 24" x 2.25"
- For 3" posts with 1" holes



# Barbells

---

## Olympic Barbells

### Sizes

700 lb

1000 lb

1500 lb

- 700, 1000, 2000 lb capacity
- 86" Long
- Industry Standard 22 kg/45 lb
- Available in 700, 1000 and 2000 lb capacity
- Bushings (700lb bar) or Ball Bearing (1000lb+) internals for smooth action motions
- Beveled tips for easy plate insertion
- 2000 lb bar features black anodized center
- Fine knurled handle for extra grip



## Curl Bar

- 300 lb Capacity
- 47" in length
- 10 kg weight
- Knurled texture on grip areas
- Polished chrome finish
- Zig-zag design allows user to create tension on different parts of arm



## Hex Squat Barbell

- 700 lb Capacity
- 56" long
- 20 kg weight
- Knurled texture on grip areas
- Hexagonal design with dual stacked handles





# Benches

---

## Incline Bench - YETI

- Front and rear seat adjustable
- 13-gauge steel construction
- Matte black powder-coated finish
- Robust adjustable locking system
- Back wheels for easy transportation
- 17" x 49" x 11.75"
- 92 lbs



## Flat Bench

- 49" x 22.5" x 18"
- 12" wide bench pad
- Wheels for easy transport
- Rubber foot pads
- Steel frame, vinyl cushion cover



## FID Bench - Sport

- 20.5" H x 54" L x 12" W (when positioned flat)
- 14 kg weight
- Fully incline/decline adjustable
- Vinyl construction for durability and easy cleaning
- Rubber feet for grip



## Incline Bench - Delta

- Adjustable front and rear seat
- 13-gauge steel construction
- Matte black powder-coated finish
- Back wheels for easy transportation
- 59" x 27.5" x 52.5"
- Industry standard bench height of 18"
- 79 lbs



# Equipment Storage

---

## Pro Dumbbell Rack

- 59" x 23" x 36"
- 34 kg
- 3-tier design for dumbbell storage
- Heavy duty 13-gauge steel construction
- Matte black powder-coated finish
- Rubber feet pads for grip



## Dumbbell Rack

- 34" x 22" x 28"
- 21 kg
- Smaller version of above rack



## Vertical Dumbbell Rack

- 19" x 24" x 50.5"
- Storage for 5-7 pairs
- Heavy duty steel construction
- Rubber feet pads for grip



## Bumper Plate and Barbell Rack

- 32" x 32" x 52"
- 16 kg
- 9 post design for plate storage
- Heavy duty 13-gauge steel construction
- Matte black powder-coated finish
- Rubber feet pads for grip



## Bumper Plate Tree Rack

- 32" x 32" x 52"
- 36 kg
- 9 post design for plate storage
- Heavy duty 13-gauge steel construction
- Matte black powder-coated finish
- Rubber feet for grip



## Mountain Bumper Plate and Barbell Rack

- 35.5" x 25.5" x 78.75"
- 38 kg
- Standard 2" plate holders and bar sleeves
- 14 plate holder slots and 4 bar holders
- Heavy duty 13-gauge steel construction
- Matte black powder-coated finish
- Rubber feet for grip



## Wall Mounted Bar Rack

- 55" x 6.3" x 63"
- 32 lbs
- Holds up to 8 barbells
- Black powder coated steel with plastic inserts



# Gym Equipment

---

## Lat Pulldown Machine

- 56" x 38" x 80"
- 90 lbs net weight
- Black powder-coated finish
- Made with 13-gauge steel
- Smooth pulley action
- 2" standard plate holders to add weight



## Wall-Mounted Pull-Up Bar

- 43.3" x 11" x 6"
- 25 lb weight
- Black powder-coated finish
- Mounting hardware included



# Gym Accessories

---

## Weightlifting Drop Pads

- 32" x 23.6" x 8"
- 29 lbs each
- Pair of two
- Soft foam with vinyl cover
- Nylon handles



## Tri-Fold Plush Vinyl Mat

- 23.5" x 23.5" square size, 70.5" total length
- 2" thick plush foam internals
- Durable vinyl outer skin
- Convenient tri-fold design with nylon handles makes for instant assembly and storage



## Barbell Collars

- Available in Spring Clamp, Hex Plastic and Hex Aluminum style
- Hex collars: UHMW Plastic internals with plastic locking mechanism



# Package Deals

## Plates

Save more by buying plates, bars and clips in a package.

### Base

- 2x 10, 2x 25, 2x 45 lb SR Crumb Plates
- 700 lb Cap, 44.5 lb Olympic Barbell
- Spring Collar Clamps

### Elevation

- 2x 10, 2x 25, 2x 45, 2x 35, 2x 45 lb plates
- 700 lb Cap, 44.5 lb Olympic Barbell
- Plastic Hex Collar Clips

### Peak

- 2x 10, 2x 25, 2x 45, 2x 35, 4x 45 lb plates
- 1000 lb Cap, 44.5 lb Olympic Barbell
- Gold Aluminum Barbell Collars

## Dumbbells

- 5-50 lb Rubber Hex Dumbbells (in 5 lb increments) + Pro 3-Tier Rack
- 5-45 Rubber Hex Dumbbells (in 5 lb increments) + Pro 3-Tier Rack
- 5-35 Rubber Hex Dumbbells (in 5 lb increments) + 3-Tier Rack
- 5-25 Rubber Hex Dumbbells (in 5 lb increments) + Vertical Rack





# Rubber Flooring

---

## Elite Interlock

- 24" x 24" x 3/8".
- Black crumb finish
- Low odour construction
- Medium density, softer feel



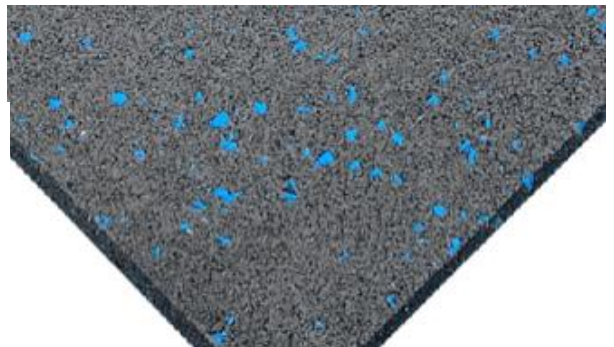
## Elite Sport

- 1m x 1m x 10mm
- Black crumb with grey fleck finish
- Low odour construction
- Medium density, softer feel



## Elite Pro

- 1m x 1m x 20mm
- Black crumb with grey or blue fleck finish
- Low odour construction
- Medium density, softer feel



## Elite Pro Clip

- 50cm x 50cm x 20mm
- Black crumb with grey fleck
- Low odour construction
- Medium density, softer feel
- Smooth, finished surface





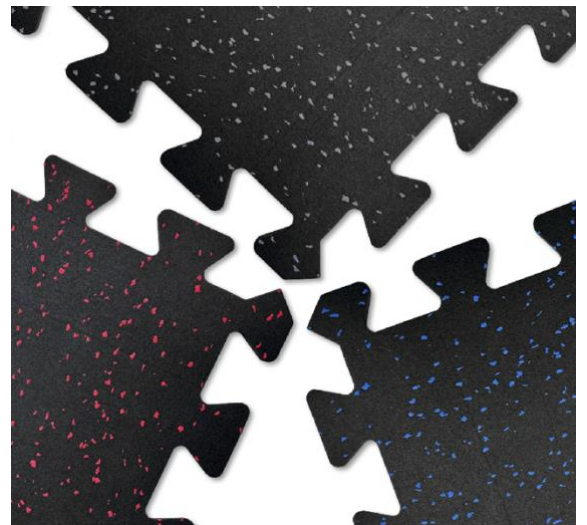
## Elite Ultra

- 1m" x 1m x 3/8"
- Tight seam interlocking design
- Black or black with grey fleck
- Low odour construction
- Durable and smooth finish, high density



## Elite Connect

- 25" x 25" tip to tip x 6mm
- Tight seam interlocking design
- Black or black with grey fleck
- Low odour construction
- Durable and smooth finish, high density
- Available in Grey, Red or Blue



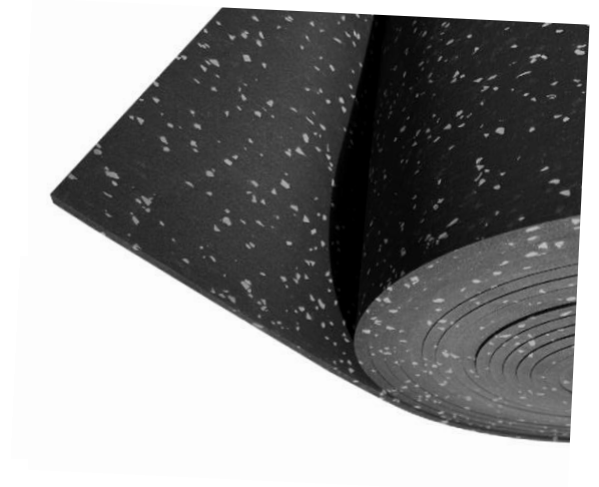
## Elite Performance

- 6' x 4' x 3/8"
- Precision cut for fitment
- Low odour construction
- Black with grey fleck
- Durable and ultra-smooth finish, high density



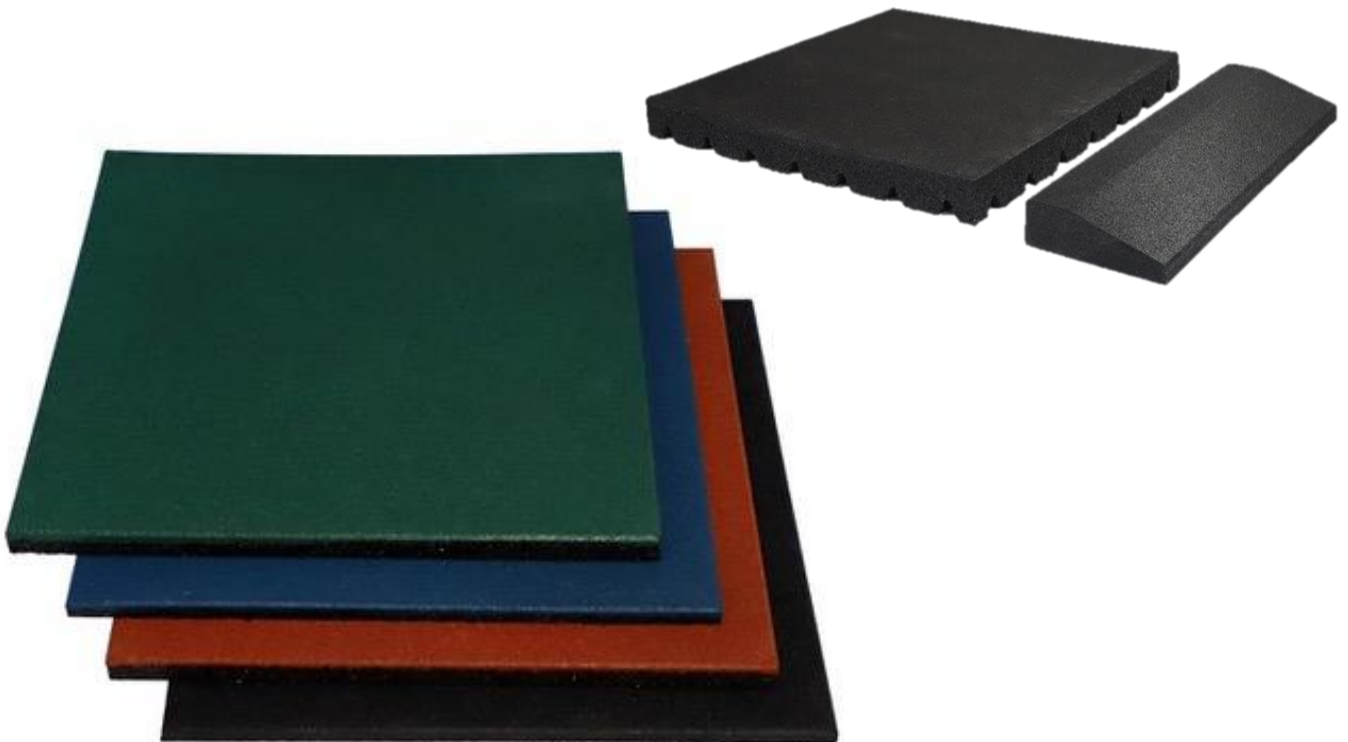
## Rolled Flooring

- 1 m x 8mm by 2.5, 5 or 10 m long
- Low odour construction
- Black with grey fleck
- Installs with Protac Tape or adhesive



## Soft-Play Playground Tiles

- 50 cm x 50 cm x 45mm
- Low odour, crumb rubber polyurethane blend
- Tiles connect with dowel pins
- Tiles feature an egg-carton underside
- Available in Green, Blue, Terracotta and Black



# Flooring Finishing Products

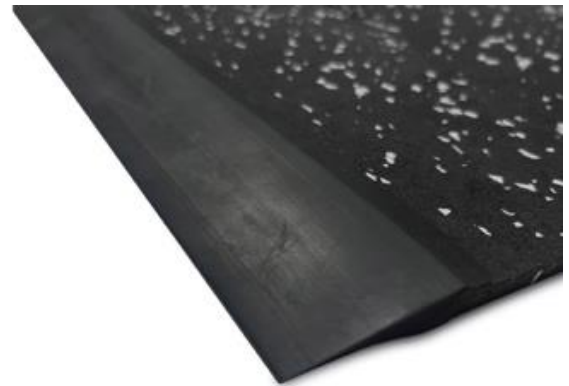
## Elite Transition Strip

- Available in Black or in the style of Elite Pro
- Soft crumb construction
- Each ramp is 50cm in width, 20mm thick and tapers to around 3mm



## 8-10 mm Rubber Transition

- 2" wide, 10mm thick
- Suitable for 8-10 mm flooring
- Tapers down to thin point
- Mild pre-curve to ensure flush fitment
- Sold in pre-cut strips



## ProTac Double Sided Flooring Tape

- 2" x 30' per roll
- High-quality double-sided flooring tape with fiber inlay



# Stall Mats

## Crossfit Stall Mat

- 4' x 6' x 3/4" at 100 lbs
- 'Pebble' texture pattern on top
- Grooved underside for drainage
- Rubber smell
- High density, ultra-durable construction



## Max G

- 4' x 6' x 3/4" at 100 lbs
- 'Diamond' texture pattern on top for maximum grip, smooth underside
- Rubber smell
- High density, ultra-durable construction



## Red Barn Stall Mats

- Available in 4' x 6' x 3/4", 5' x 7' x 3/4", 5' x 7' x 1/2"
- Smooth finish on both sides
- Rubber smell
- High density, ultra-durable construction



## Second Grade Red Barn Stall Mats

- New mats with various imperfections such as blemishes, surface inconsistencies, sizing variances, tears and chunks missing.
- Available in 4' x 6' x 3/4" (button pattern), 5' x 7' x 3/4", 5' x 7' x 1/2"



Canadian Made - Stall mats have a rubber odour and are best used in open facilities or outdoors.



# Anti-Fatigue Matting

## Waterhog Mat

### Sizes

24" x 36"

36" x 60"

48" x 72"

- Durable carpet fabric face with stamped pattern
- Rubber backing with ramped edges
- Available in Dark Grey, Charcoal or Light Grey



## Rubber Bubble Mat

### Sizes

24" x 36"

24" x 60"

- Available in 2' x 3' or 2' x 5'
- Bubble design on face for soft and comfortable standing surface
- Ramped edges
- Nubs on underside to sink in to carpet



## Rolled Ribbed Runner

- 1/8" x 48"
- Upraised rubber ribs make for extra grip and protection
- Sold by the linear foot



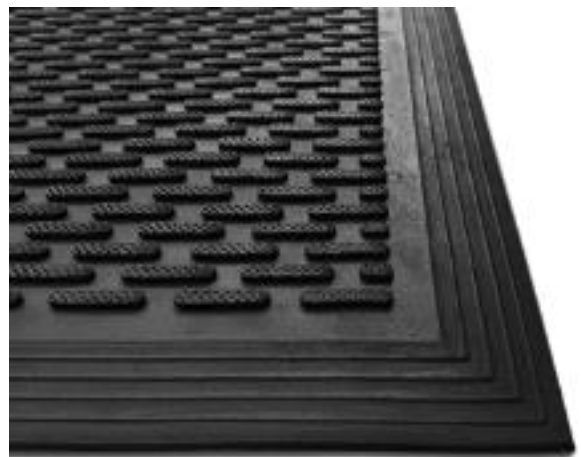
## Beveled Drainage Mat

- 3' x 5' x 1/2"
- Vulcanized rubber
- Stamped hole design for drainage
- Ramped edges



## Scraper Entry Mat

- 3' x 5' x 1/4"
- Vulcanized rubber
- Upraised rubber ribbed face for cleaning
- Grooved underside for stability
- Ramped edge



## Interlocking Wash Mat

- 36" x 36" x 5/8"
- Vulcanized rubber
- Stamped hole design for drainage
- Male/female linkage on edges



## Boot Scraper

- 16" x 12" x 4"
- Upraised rubber nibs with shoe pattern create scraping surface
- Easy to clean
- Vulcanized rubber



# Traffic Control

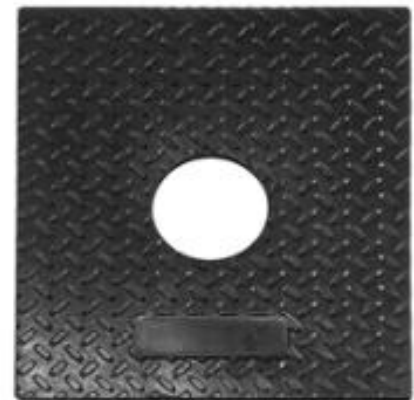
## Traffic Delineator

- 44" x 4" weighing 720g
- High-visibility 44" reflective barricade post
- Two 4" high-intensity reflective bands
- UV inhibitors resist fading
- Easy-to-carry handhold on post bottom and top
- Top can be used to tie barricade tape to, or to support standard barricade lights
- Available in Loop-top or T-top



## Traffic Delineator Base

- 17" x 17" x 1.5" weighing 10 lbs
- Ribbed bottom with inset delineator insertion
- Recycled Rubber
- Rated for -30°c temperatures



## Traffic Cones

- Available in 18", 28" and 36"
- 3.5, 7 and 10 lbs respectively
- Vulcanized rubber base
- Engineered reflective bands



## Rubber Parking Curb

- 72" x 4" x 6" weighing 36 lbs
- Vulcanized rubber
- High visibility yellow panels on all 4 sides
- Moulded surface bumps for anti-slip surface
- Installed with four 14" Rebar spikes



## Rubber Speed Bump

- 6' x 1' x 2.5"
- Hi-vis yellow banding
- Moulded surface bumps for anti-slip surface
- Imbedded crystals (cat eyes) for night visibility



## Rubber Speedbump Endcap

- Beveled design
- Fits on the ends of the Summit Rubber Speed Bump
- Made from vulcanized rubber



## Rebar Spikes

- 14" x 1/2"
- Suitable for concrete, asphalt and more
- Galvanized steel
- Available individually or in boxes of 50



## TC-54 Barrel Base

- 16" inner diameter
- Durable vulcanized rubber construction
- 20 lbs
- Molded base made for 16" TC-54 Traffic Barrel.



## Control Base

- 20" x 27" x 2 .5"
- 40 lbs
- Durable vulcanized rubber construction



# Contact Us

Front Office:

604-776-2220

orders@summitrubber.ca

## Commercial Sales:

sales@summitrubber.ca

## Fitness Sales:

caleb@summitrubber.ca

## Our Location

107-33391 Maclure Road,  
Abbotsford, British Columbia V2S 7W3 Canada

---

All prices are as listed on the Summit Rubber online store.  
Prices on site are subject to change without notice.

### Site Links

Home: <https://summitrubber.ca/>

Online store: <https://summitrubber.myshopify.com/>

