

# HOMES & GARDENS®

## One of a kind

### CREATIVES AT HOME

EXTRAORDINARY  
HOMES BY  
STYLE LEADERS  
DESIGNERS ON  
THEIR TOP SPACES

### BOLD DECOR

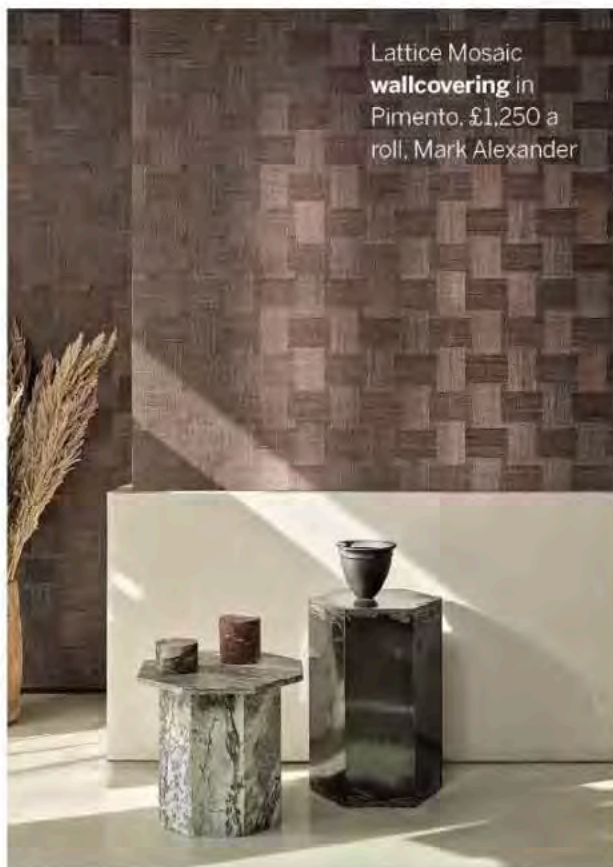
IDEAS WITH  
STRIKING  
GEOMETRICS  
HOW TO USE  
COBALT BLUE

### LATEST TRENDS

NEW PRODUCT  
LOOKS FOR  
AUTUMN/WINTER  
WHERE TO  
SOURCE RUGS

### NAMES TO KNOW

THE RISING STARS  
OF TODAY'S  
DESIGN SCENE  
ARTISTS TO  
INVEST IN NOW



Lattice Mosaic wallcovering in Pimento, £1,250 a roll, Mark Alexander

WONDERFUL WEAVE

Look out for subtle wallcovering designs made from natural fibres – such as sisal, jute and linen – which have an inherent ability to catch the light and provide understated design detail. Handwoven in sisal, this design has been expertly crafted by artisans to include juxtaposed angles, giving the overall design a beautiful woven mosaic effect.



Adobe wallcovering, £379 a tile, Babylon Collection at Arte

NEUTRAL & NUANCED

Opting for a slightly smaller-scale split-shape geometric wallcovering that is embossed at varying degrees creates subtle interest. The squares and triangles catch the light from different angles and offer a slightly softer way to introduce a geometric pattern into a living or dining room scenario.

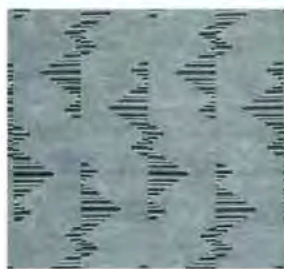
SOFT & METALLIC GEOMETRICS



Las Pozas fabric in Hessian, £130m, Zinc Textile



Atelier Geo Stone wallpaper, £60 a roll, Graham & Brown



Arcade fabric in Jade, £220m, Kelly Wearstler for Lee Jofa at GP&J Baker



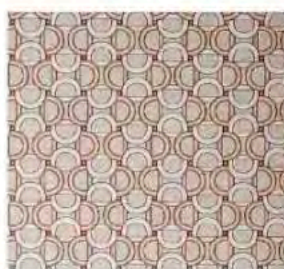
Bargello fabric in Sea Mist, £132m, Madeaux



Framework fabric in Dune, £167m, Brook Perdigon at The Fabric Collective



Willow Barley wallpaper, £70 a roll, 1838 Wallcoverings



De-Da-Do wallpaper, £294.50m, Dedar



Gemini 01 fabric, £338m, Pollack at Altfield

BORDER ESPEN FABRIC IN NATURAL, £52M, SOREN COLLECTION AT CLARKE & CLARKE, SANDERSON DESIGN GROUP