

CALIFORNIA HOMIES

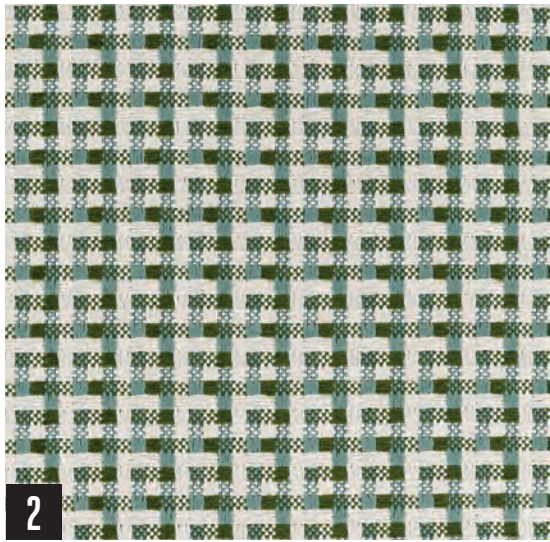
THE MAGAZINE OF ARCHITECTURE
THE ARTS & DISTINCTIVE DESIGN

TIMELESS DESIGN

BEVERLY HILLS
NAPA VALLEY
SAN FRANCISCO
SONOMA

+
ARTFUL
KITCHENS





1. CW STOCKWELL

Joy Sunbrella Basket Plaid collection in emerald
A present-day interpretation of the crisscross pattern originally released by CW Stockwell in 1959.
San Francisco | CW Stockwell
Los Angeles | Harbinger
cwstockwell.com

2. ETAMINE

The NICE basketweave design from the Heures d'ete collection has a playful interlacing of finely contrasting strands.
San Francisco | HEWN
Los Angeles | Thomas Lavin
zimmer-rohde.com

3. BROOK PERDIGON TEXTILES

Toile de Terrain in Ocean
A new interpretation of the collection favorite, the modern toile is now available in a performance textile.
brookperdigontextiles.com

4. PETER DUNHAM TEXTILES

Espadrille in Avignon
A fun, sophisticated multi-color stripe that fits perfectly indoors or poolside.
Los Angeles | Hollywood at Home
San Francisco | Holland & Sherry
peterdunhamtextiles.com

5. SUZANNE TUCKER HOME

Espalier in Azure
In addition to being beautiful and durable, these textiles are made partly from recycled soda and water bottles.
San Francisco | Shears & Window
Los Angeles | Jasper
suzannetuckerhome.com

SAIL AWAY

Celebrate the Outdoors
this Summer with
Performance Textiles
that Reflect the Sky,
Sea, and Garden

