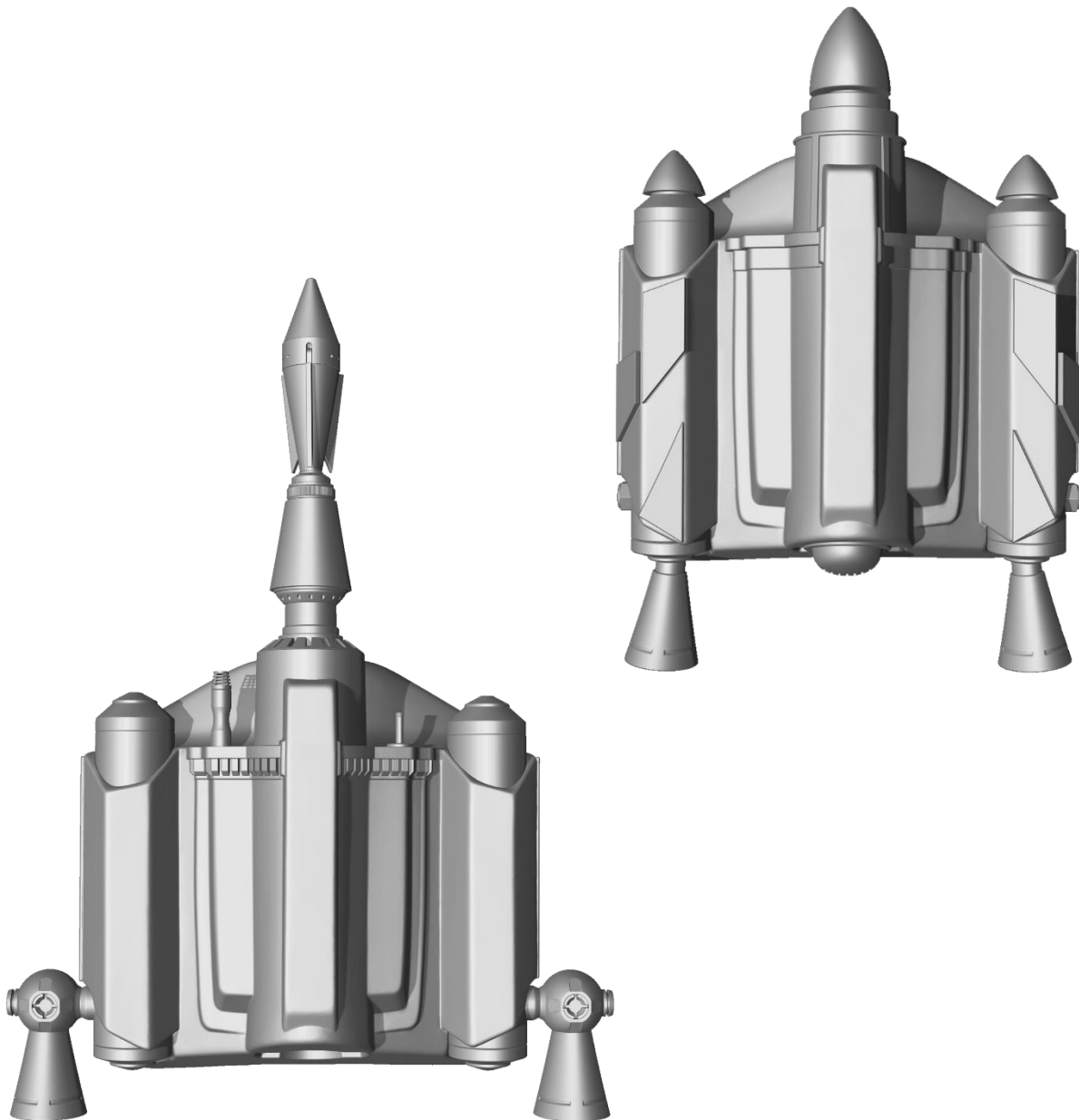


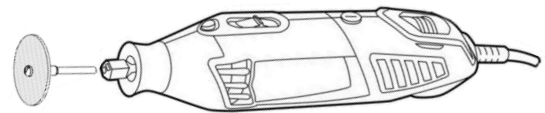
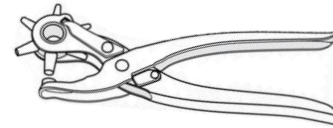
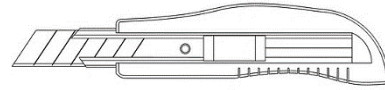
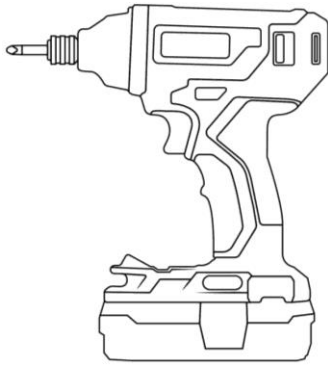
# STAR WARS™

## Z-6 or JT-12 JETPACK KIT INSTRUCTIONS

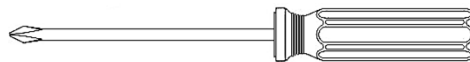
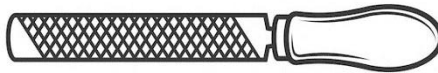
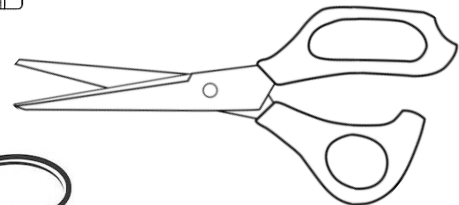
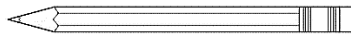
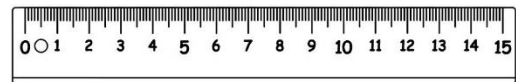
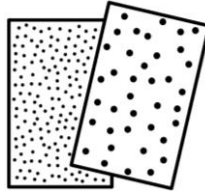


08-10-2023 v1.0

© & TM Lucasfilm Ltd.



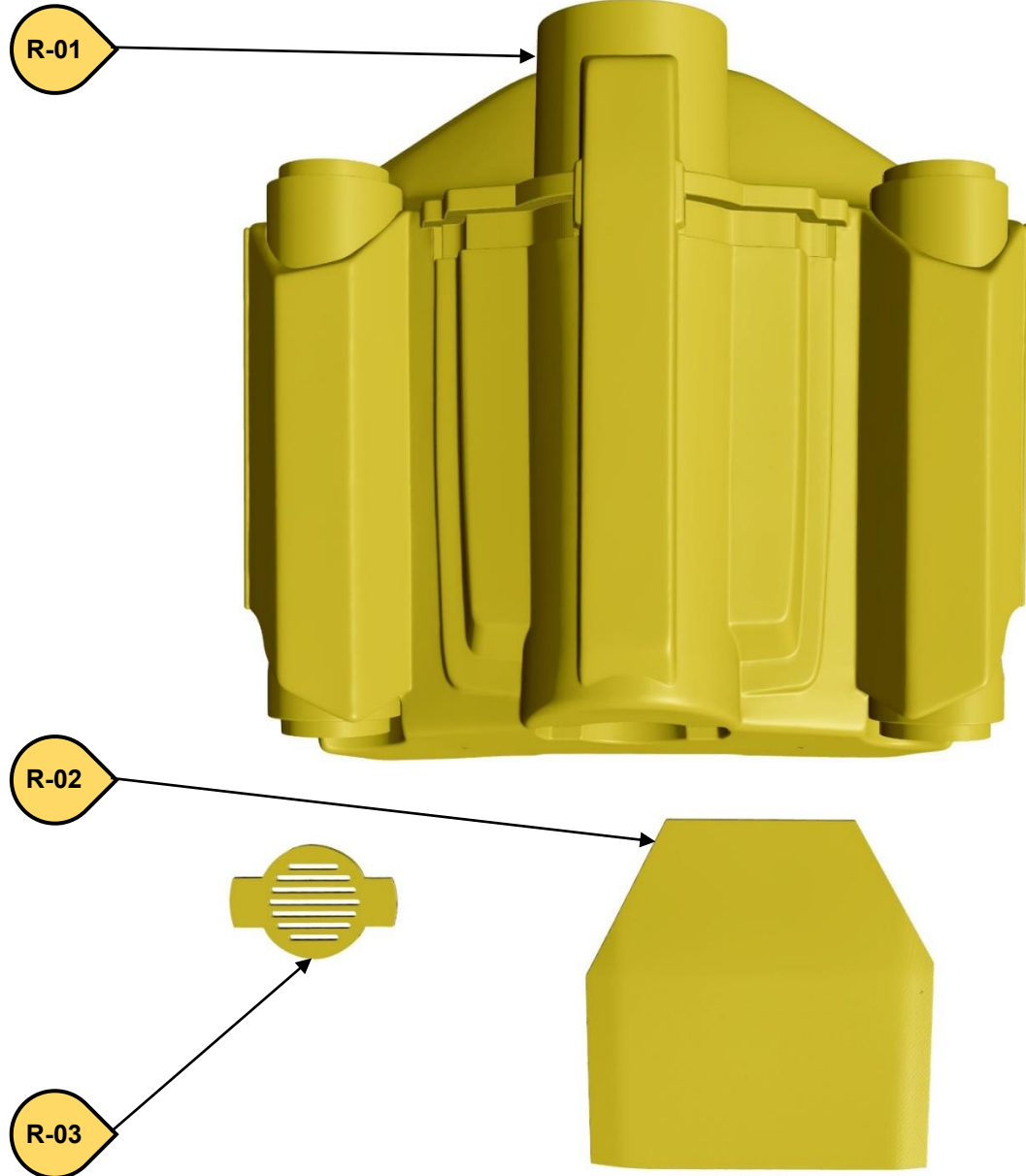
- Utility Knife
- Hole Puncher
- Sandpaper 180-400 Grit
- Files
- Ruler
- Philips Screwdriver
- Pencil
- Clear and or Epoxy Glue
- Scissors
- Clamps
- Electric Drill
- Electric Cutting Tool
- 4mm – 5/32" Drill Bits
- 7mm & 10mm Socket or Wrench



### SAFETY



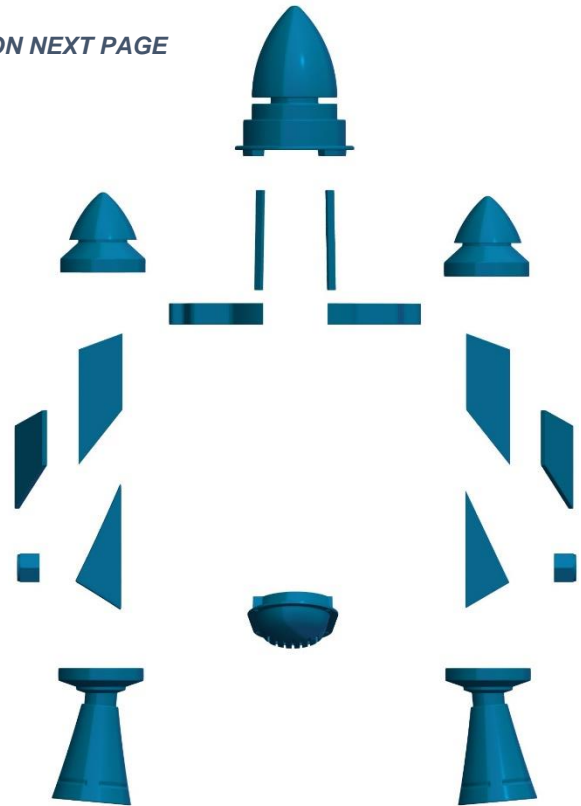
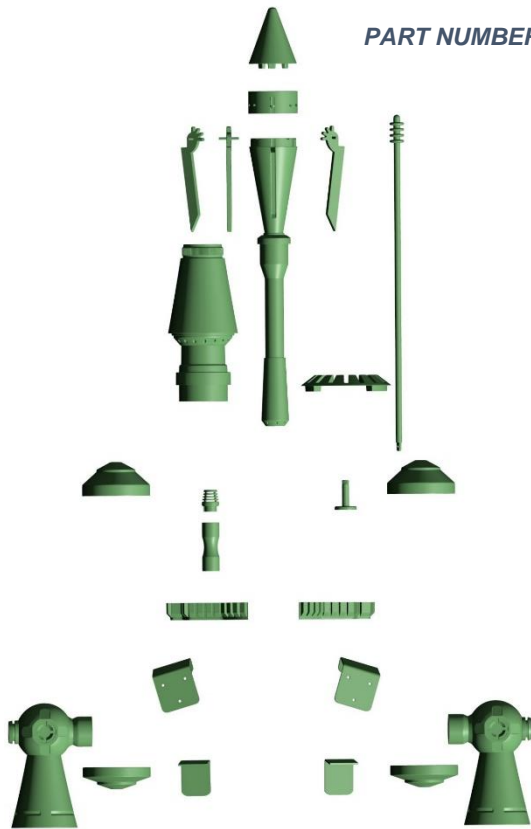
- Use caution when handling sharp instruments and tools.
- Wear Safety glasses, dust mask, and work glove during assembly to prevent injury.
- Stay in a well-ventilated area when using any glue or paints.
- Keep small children away from polybags and all tools.



Part Name	Part Number
Rocket Pack Body	R-01
Rocket Pack Body Door	R-02
Rocket Pack Exhaust	R-03

## Z6 - JT12 PARTS LIST

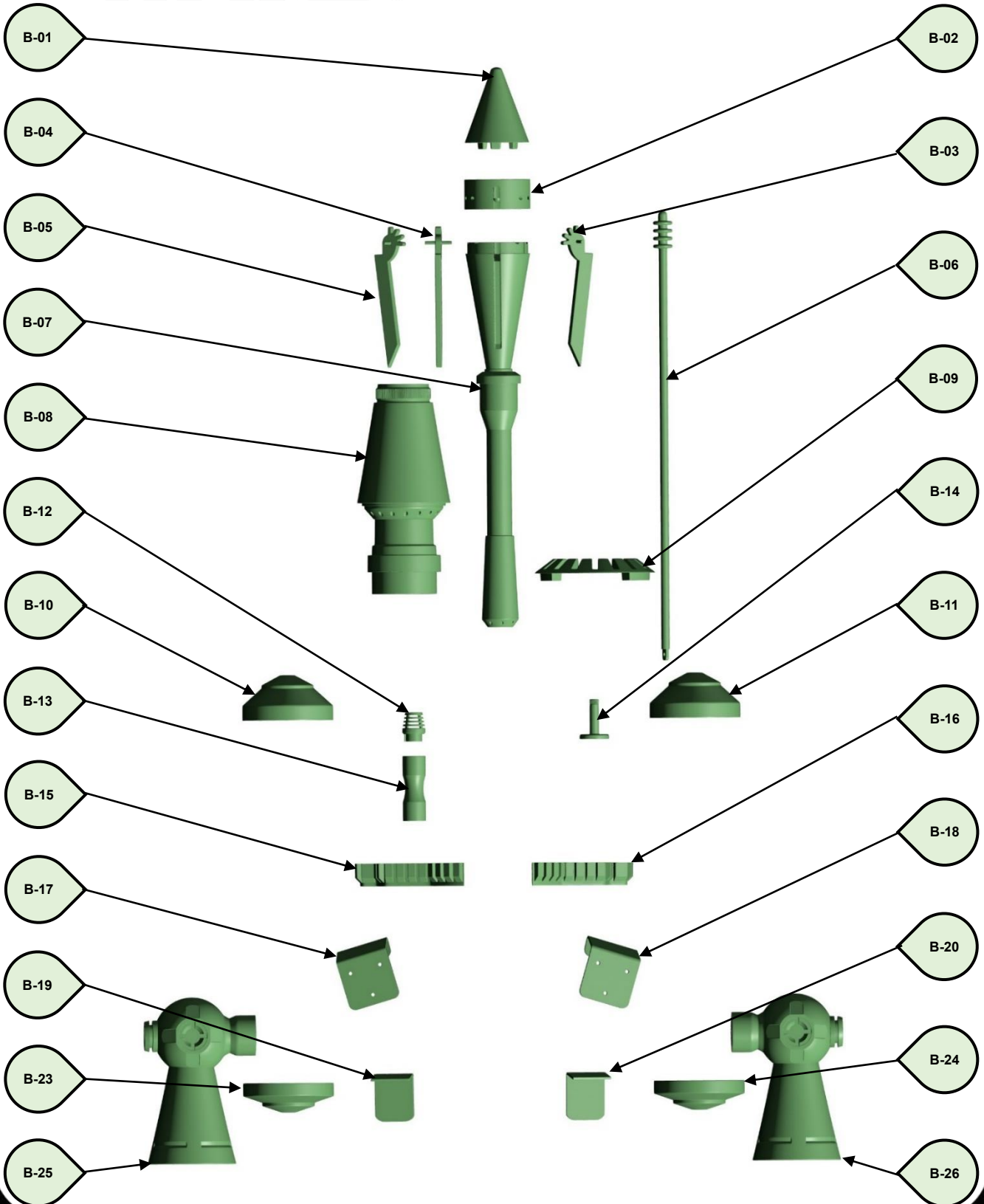
PART NUMBER DIAGRAM ON NEXT PAGE



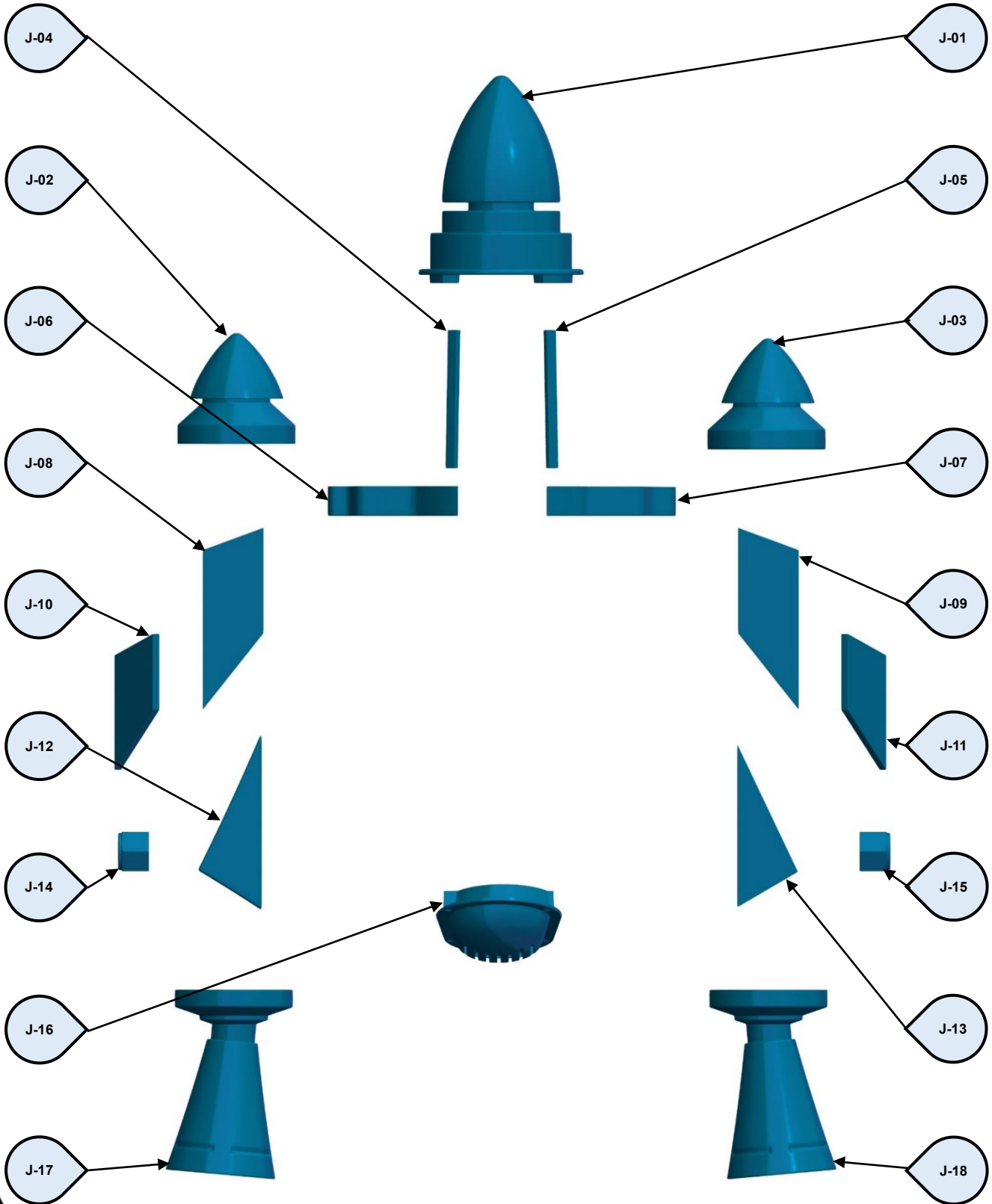
Z6 Part Name	Part Number
Missile_Cone	B-01
Missile_Head	B-02
Missile_Wing_01	B-03
Missile_Wing_02	B-04
Missile_Wing_03	B-05
Missile_Wing-Plunger-v2	B-06
Missile_Main-Shaft	B-07
Missile_Chimney	B-08
Chimney-Cap	B-09
Can_L_Top-Cap	B-10
Can_R_Top-Cap	B-11
Beacon_Top	B-12
Beacon_Body	B-13
Tuner_Knob	B-14
Piano-Keys-L	B-15
Piano-Keys-R	B-16
Upper-Clip_L	B-17
Upper-Clip_R	B-18
Hip-Clip_L	B-19
Hip-Clip_R	B-20
INTENTIONLLY BLANK	B-21
INTENTIONLLY BLANK	B-22
Can_L_Bott-Cap	B-23
Can_R_Bott-Cap	B-24
Nozzle-L	B-25
Nozzle-R	B-26

JT12 Part Name	Part Number
Rocket-Top	J-01
Thruster-Top-Left	J-02
Thruster-Top-Right	J-03
Rocket-Plate-Left	J-04
Rocket-Plate-Right	J-05
Piano-Panel-Left	J-06
Piano-Panel-Right	J-07
Thruster-Plate-Left-01	J-08
Thruster-Plate-Right-01	J-09
Thruster-Plate-Left-02	J-10
Thruster-Plate-Right-02	J-11
Thruster-Plate-Left-03	J-12
Thruster-Plate-Right-03	J-13
Thruster-Nut-Left	J-14
Thruster-Nut-Right	J-15
Vent-Bottom	J-16
Thruster-Left	J-17
Thruster-Right	J-18

## Z6 PARTS LIST

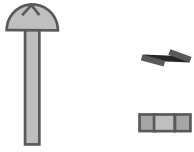


## JT12 PARTS LIST





## HARDWARE PARTS



QTY 6 - M4 x 20mm Screws with Lock Washer and Nut  
QTY 6 - M4 Lock Washer  
QTY 6 - 7MM Nut  
(Used on parts B17 and B18 or for JT-12 Bottom Strap)



QTY 10 – Fender Washer, OD: 25.6mm / ID: 4-5mm



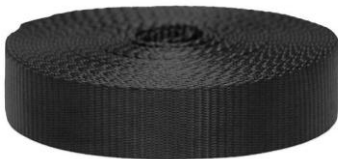
QTY 2 – Washer, OD: 25.6mm / IN: 6-8mm  
QTY 2 – Lock Washer, IN: 6-8mm  
QTY 2 – 10MM Nut

(These are used on parts B25, B26 or J14, J15)



Drywall Screws, 16mm Length

QTY = 4



Black Webbing (1.5" or 38mm)

Length = (14" or 36cm)

QTY = 2



Release Buckle (1.5" or 38mm)

QTY = 3

**\*PLEASE READ ALL THE INSTRUCTION FIRST BEFORE ASSEMBLING.\***

The following instructions are general guidelines needed to prepare the surface of the parts to achieve optimal bonding. Preparation may require using a detergent or solvent to clean the materials as thoroughly as possible and remove the dust, grease, and oil. When preparing a part please do this in a well-ventilated area and wear necessary personal protection. It is not required to prepare all the parts first. The parts can be prepared at each step of the instructions.

### Clean the Surface

Wiping the surface with Acetone or isopropyl alcohol will remove any excess dirt, oil, or debris from the surface. It is important to use a cleaner that will not leave any residue behind. Wipe the surface clean in one direction. Wait for the total evaporation of the cleaner.

### Abrade the Surface

Abrading a surface gets rid of surface films, will loosen up any accumulated dirt, rust, or chipped paint and aid in the adhesion gives a much better area for the adhesive to “grip”.

A finely abraded surface with shallow scratches created by a circular motion (rather than straight lines) has the best potential for a strong and persistent bond. This method can create up to a 40% increase in surface area and can result in greater immediate and long-term bonding potential. Use fine grain sandpaper (220-400 grit), emery cloth. Abrade enough just to clean and roughen the surface. After an abrasion treatment, remember to remove all loose particles before applying adhesive. Brush the surface or blow with compressed air, and then degrease to clear away all loose particles and residual oils.

Depending on the level of abrasion needed, the following can be used:

- Hand Files
- Sandpaper
- Hand Pads
- Emory Pad



### SAFETY INSTRUCTION



USE MASK



USE GLOVES



USE GLASSES



IN WELL-VENTILATED  
AREAS



KEEP AWAY FROM  
OPEN FLAMES



### Which Jetpack to build

Components of this Jetpack Kit can be used to create one configuration of a Mandalorian Jetpack. A kit can build either the Z6 grappling missile version worn by Boba Fett™ or the JT12 shorter warhead missile version as worn by Jango Fett™.

**You can also build your own customizable configuration to create a unique one-of-a-kind Jetpack too.**

The following instructions will illustrate how to build the Z6 Jetpack and then the JT12.

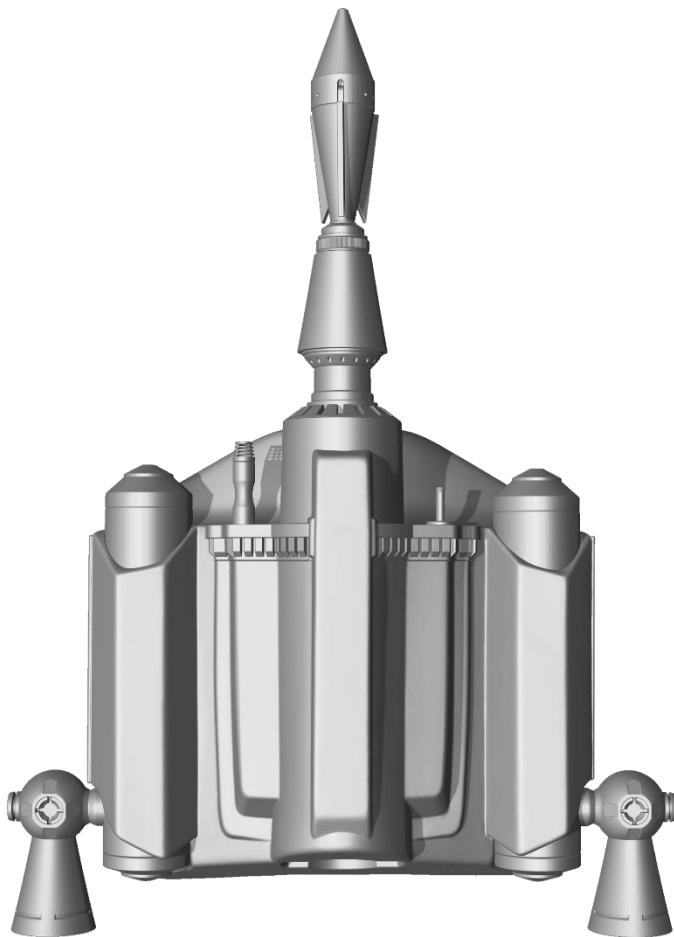


Figure 1: Z6 Jetpack

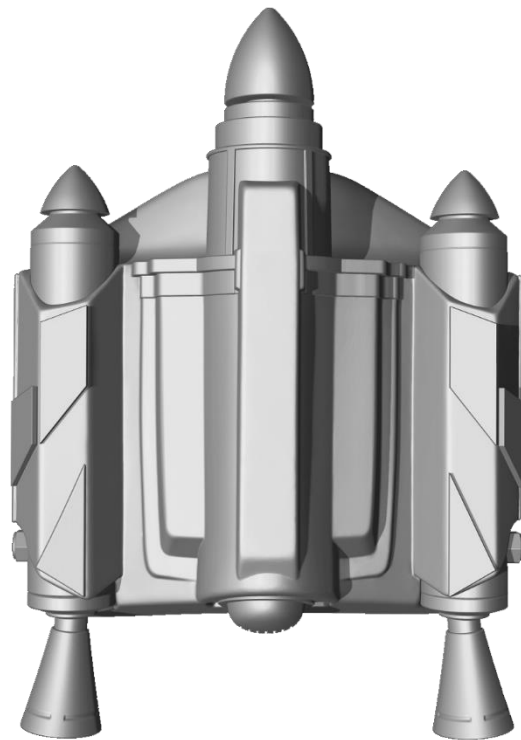
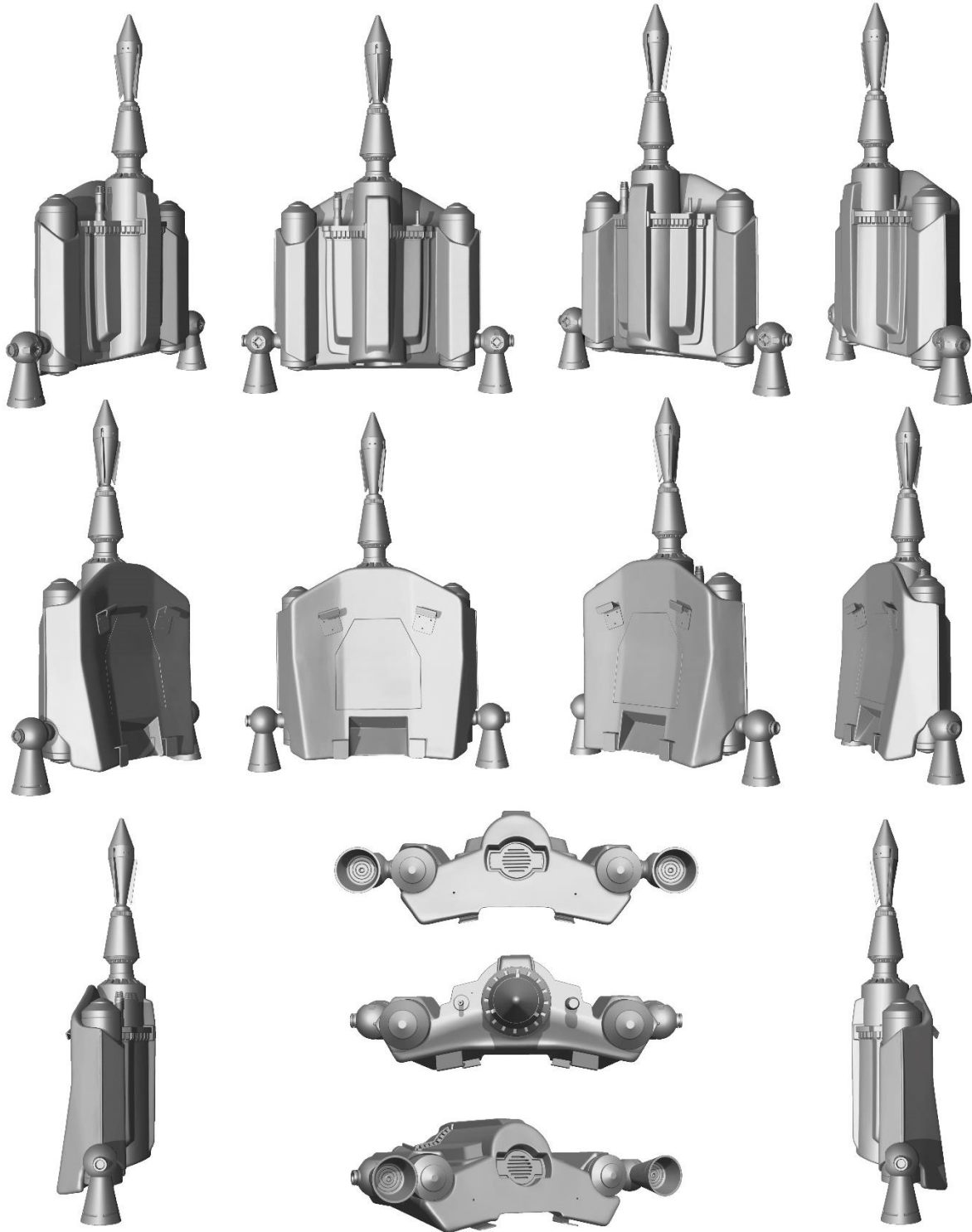


Figure 2: JT12 Jetpack

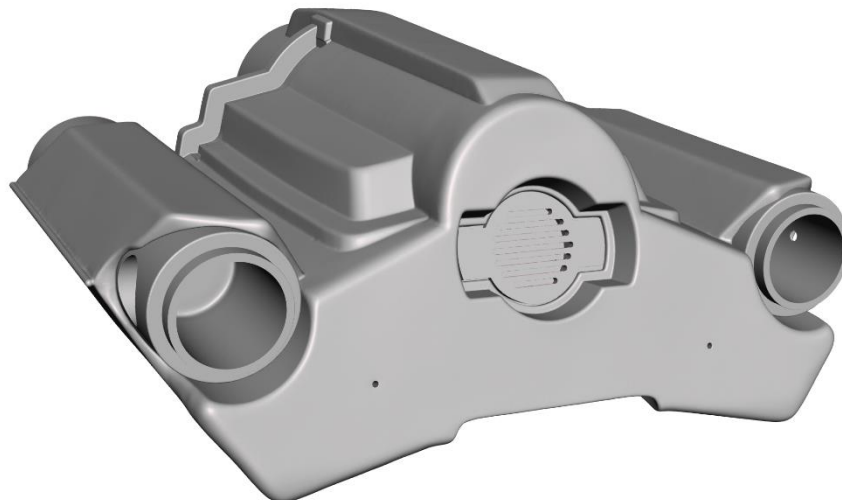
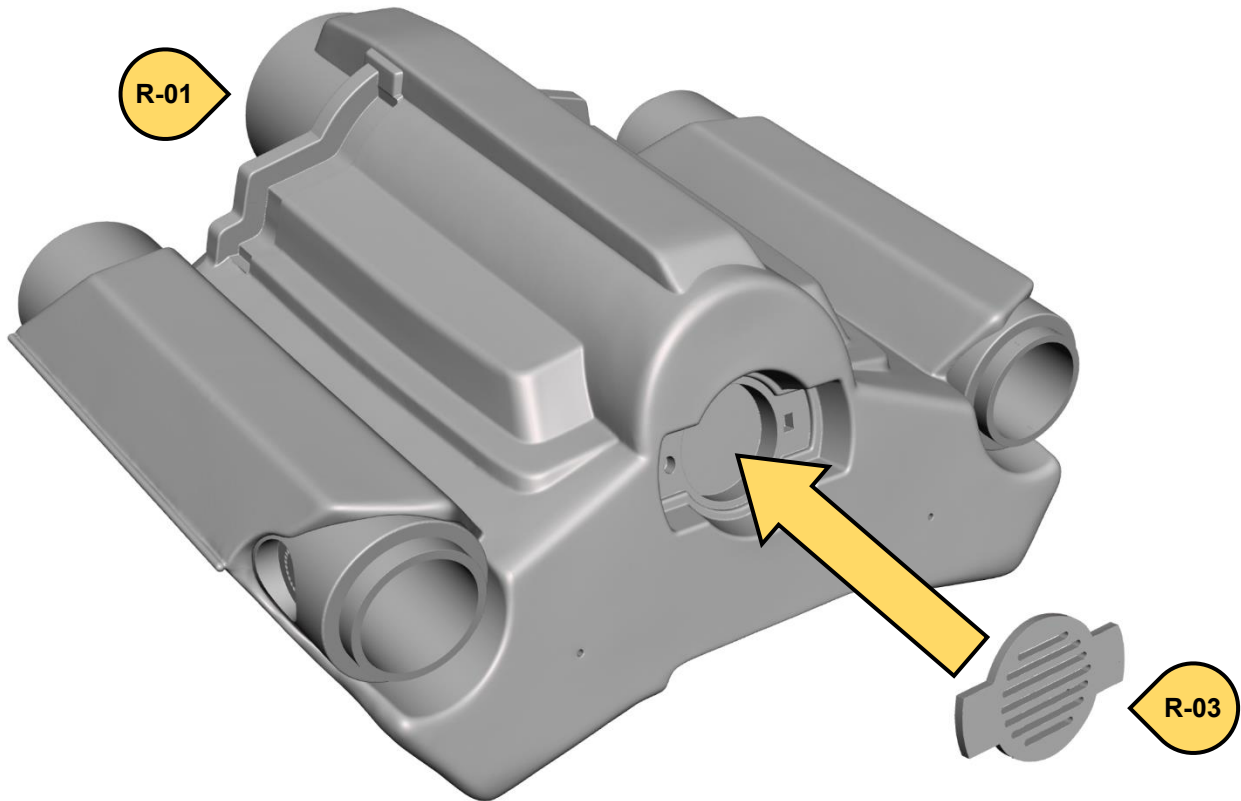
## Z6 JETPACK BUILD



### Base Part- Exhaust.

Glue the following Parts:

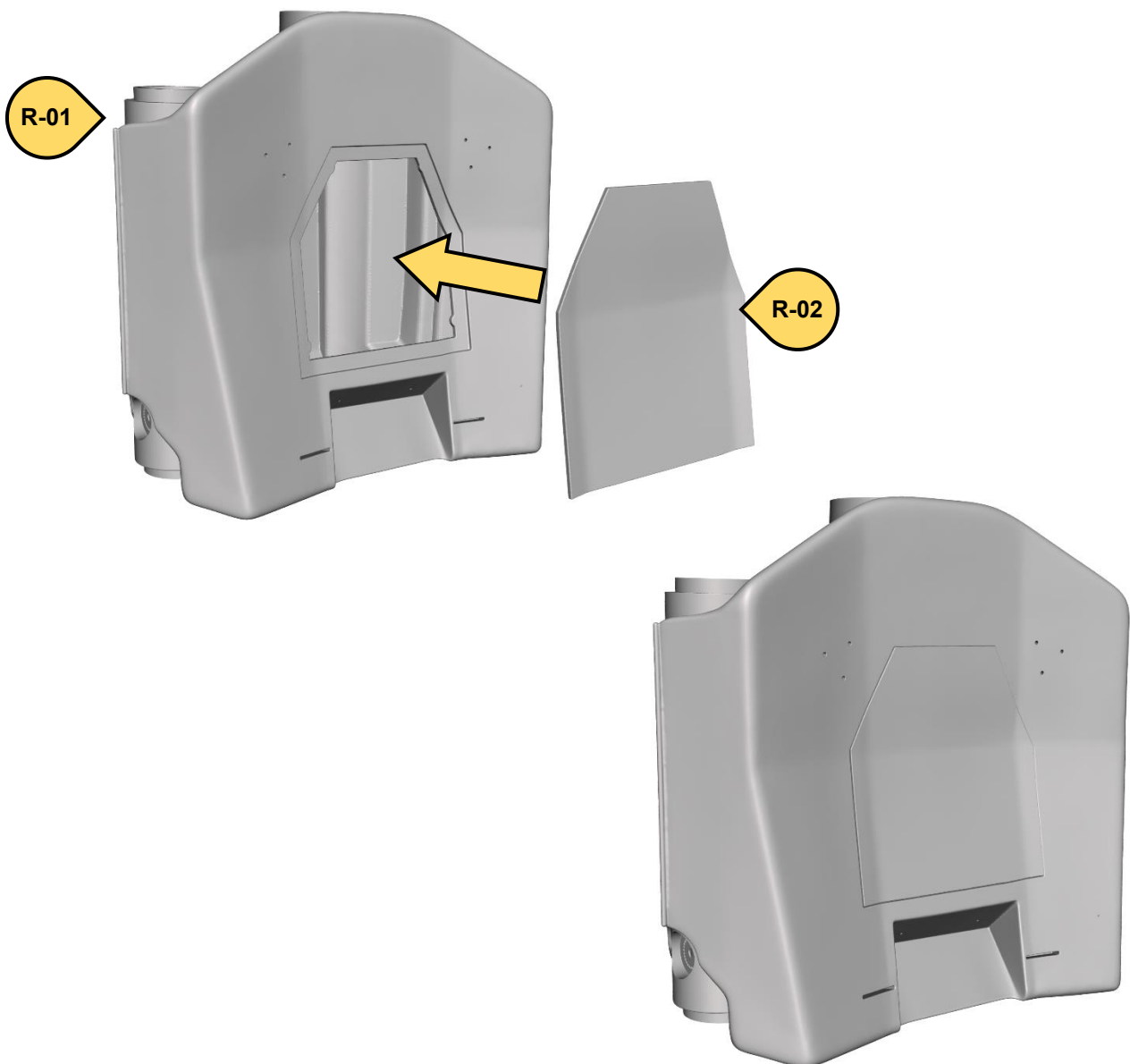
- R-03 to part R-01.



### Base Part - Door.

It's suggested to make this the **LAST STEP** once all the other parts have been put on. The Door can be glued into place. An upgrade suggestion would be to have the door removable. This could be done multiple ways with either Hook & Loop, magnets or even screws. This is where your creativity and customizable options are endless.

At this point the Base Pack is ready for a Z6 or JT12 Build. The Next page will start the Z6 Build. If you are wanting to build the JT12 please jump to page 27.

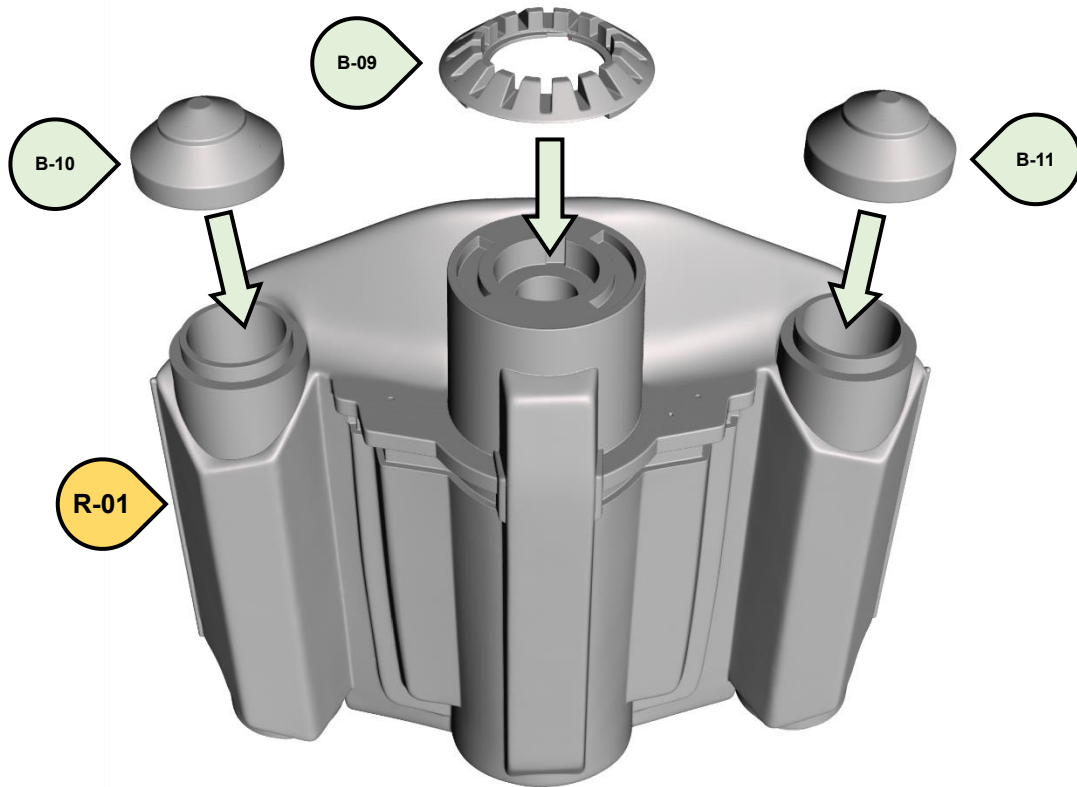


## JETPACK BUILD Z6 PARTS - 01

Glue the following parts:

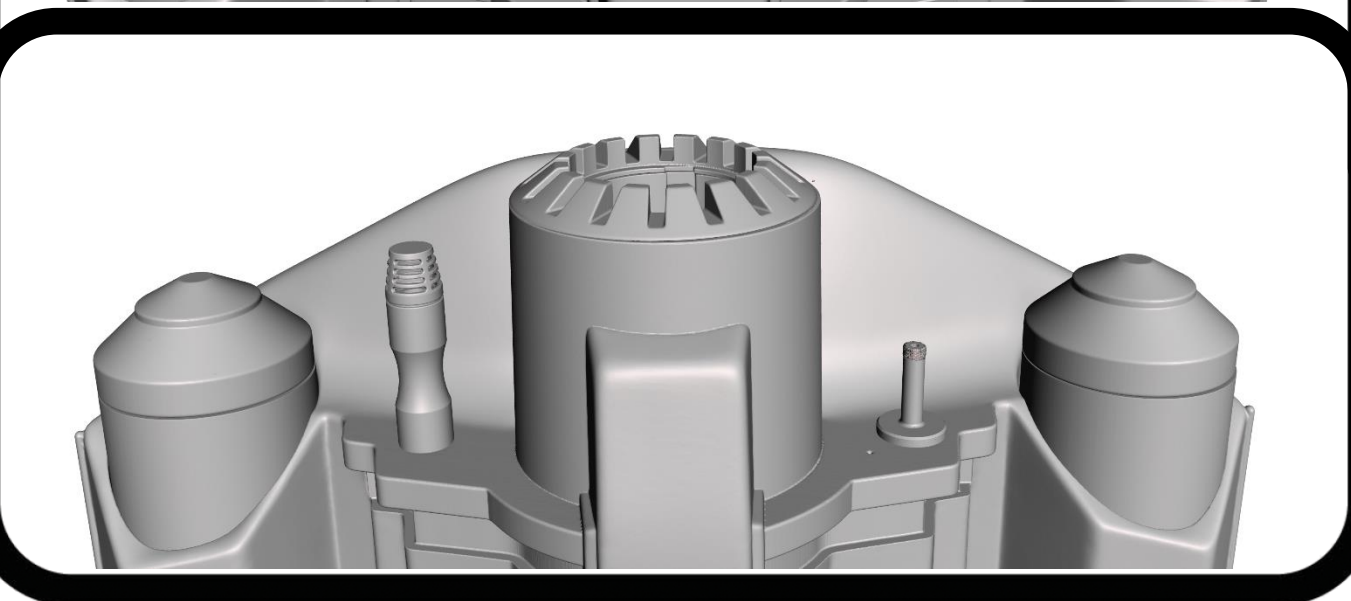
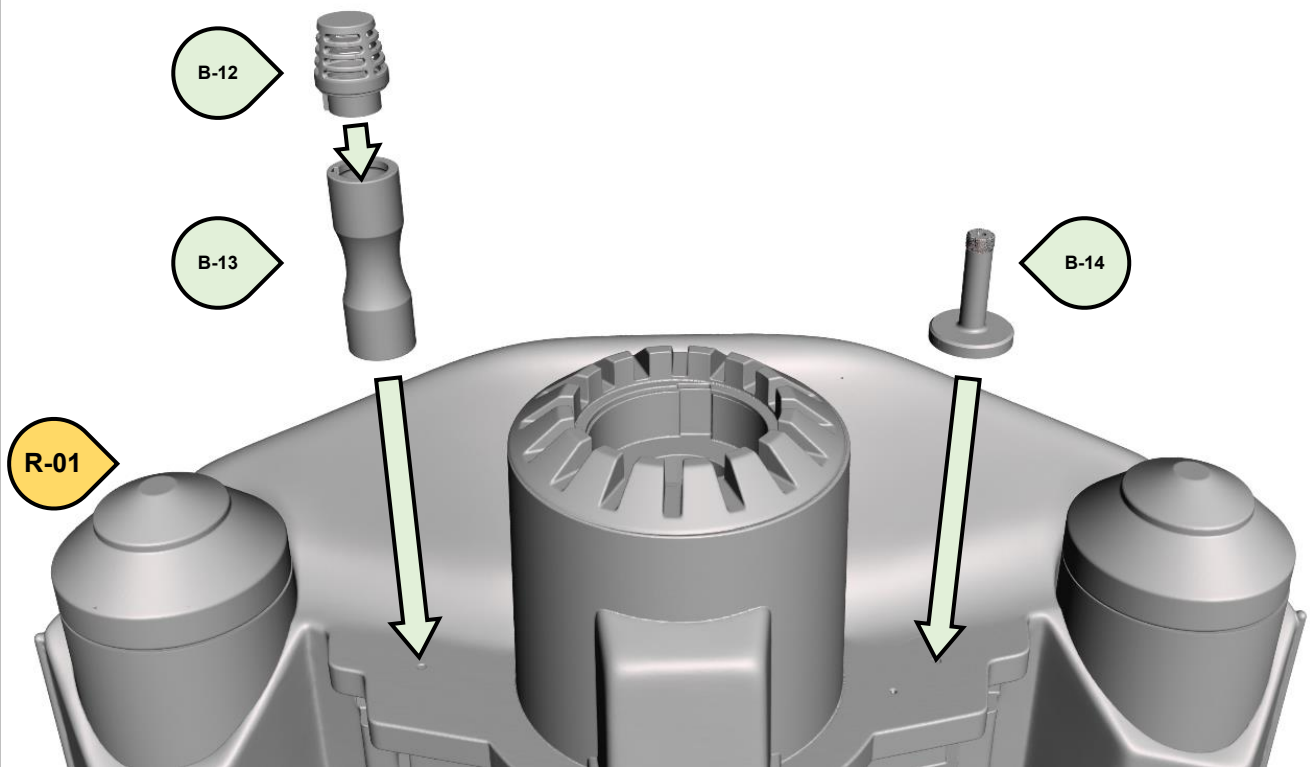
- B-09 is keyed to go in only one way to R-01.
- B-11 to R-01.
- B-12 to R-01.

(The Left and Right Top Caps are identical parts.)



Glue the following parts:

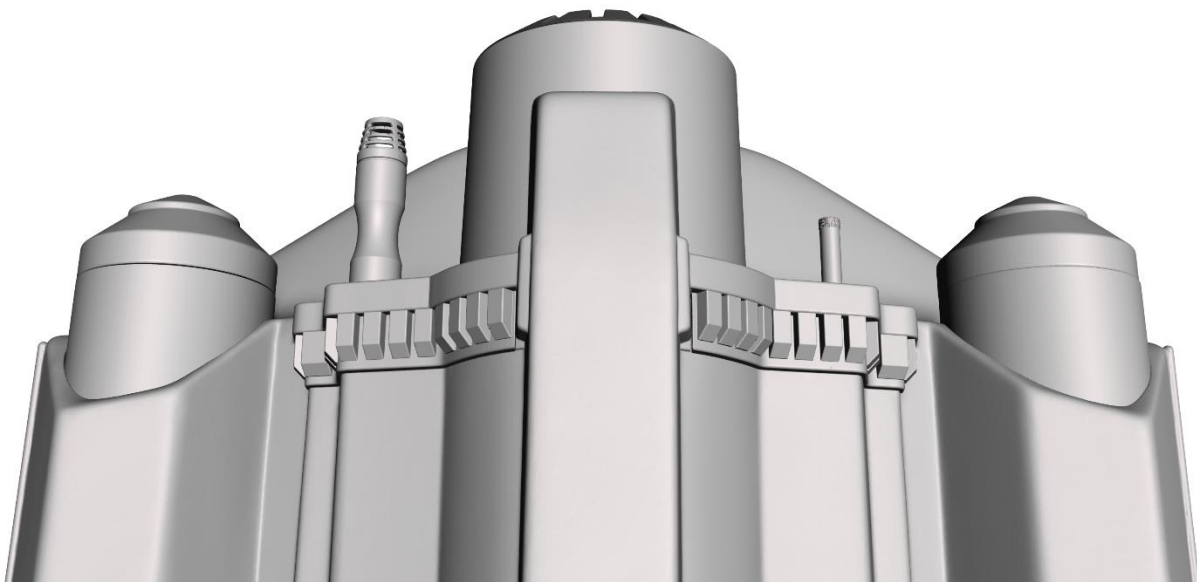
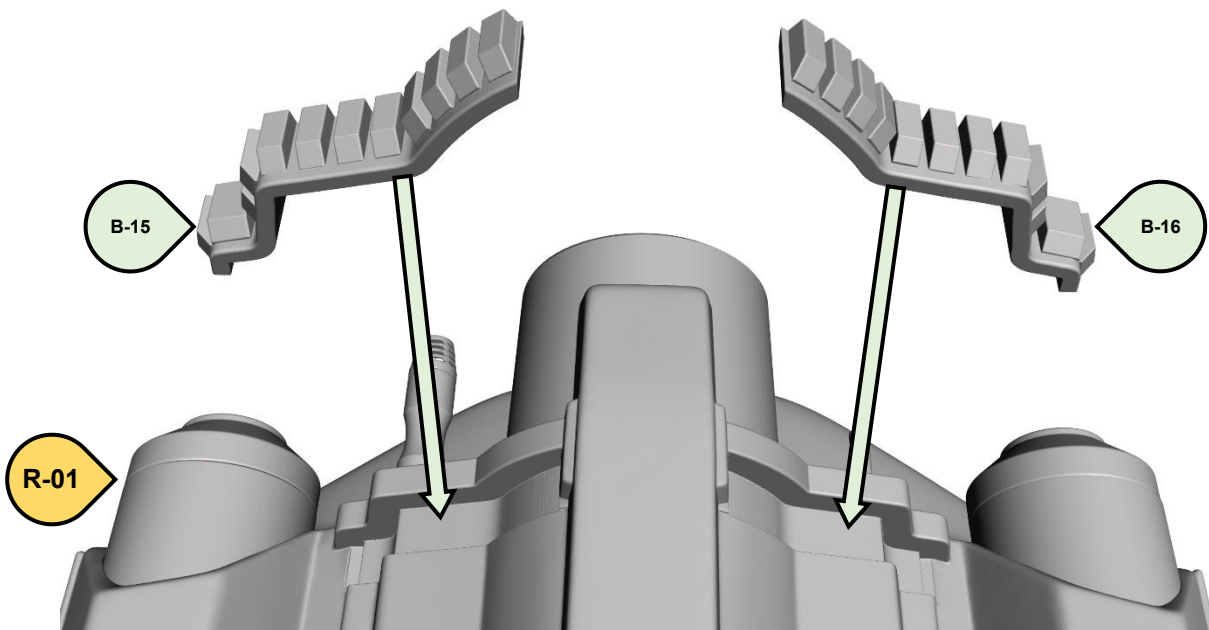
- B-12 to B-13.
- B-13 to R-01.
- B-14 to R-01.





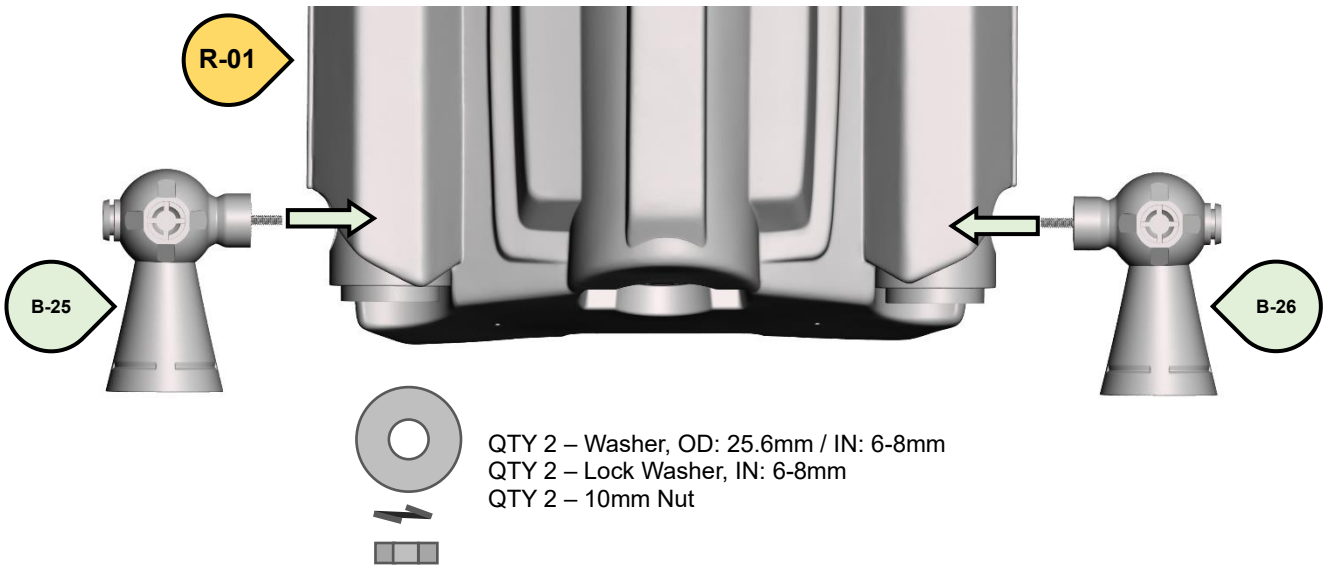
Glue the following parts:

- B-15 to R-01.
- B-16 to R-01.



Insert B-25 & B-26 to the hole near the bottom outside of the R-01. Use the hardware below and a 10mm Wrench or Socket.

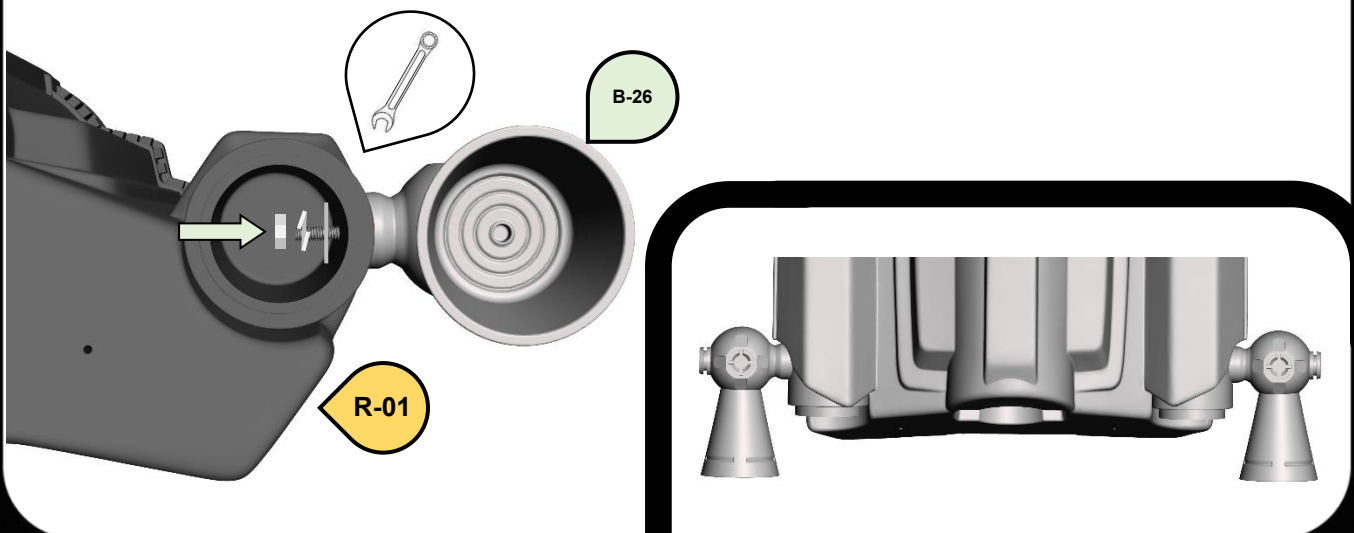
- B-25 to R-01. (Use the Larger Washer, Lock Washer, and 10mm Nut)
- B-26 to R-01. (Use the Larger Washer, Lock Washer, and 10mm Nut)



From the Bottom of R-01 the hardware can be attached using a 10mm Wrench. The Washer goes on First, then the Lock Washer and then the 10mm Nut.

\*\*\* DO NOT OVERTIGHTEN \*\*\*

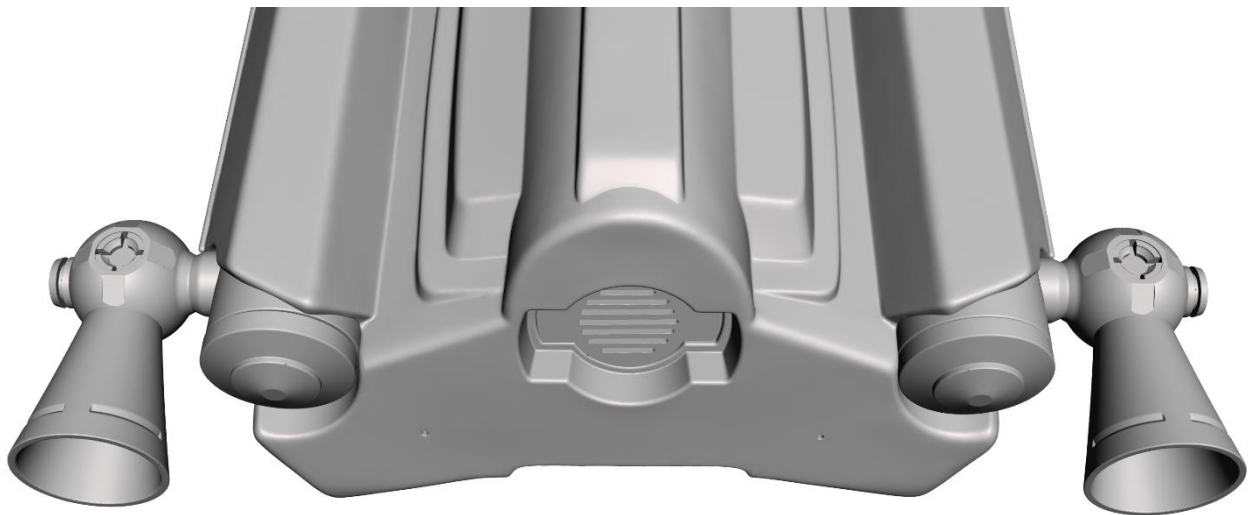
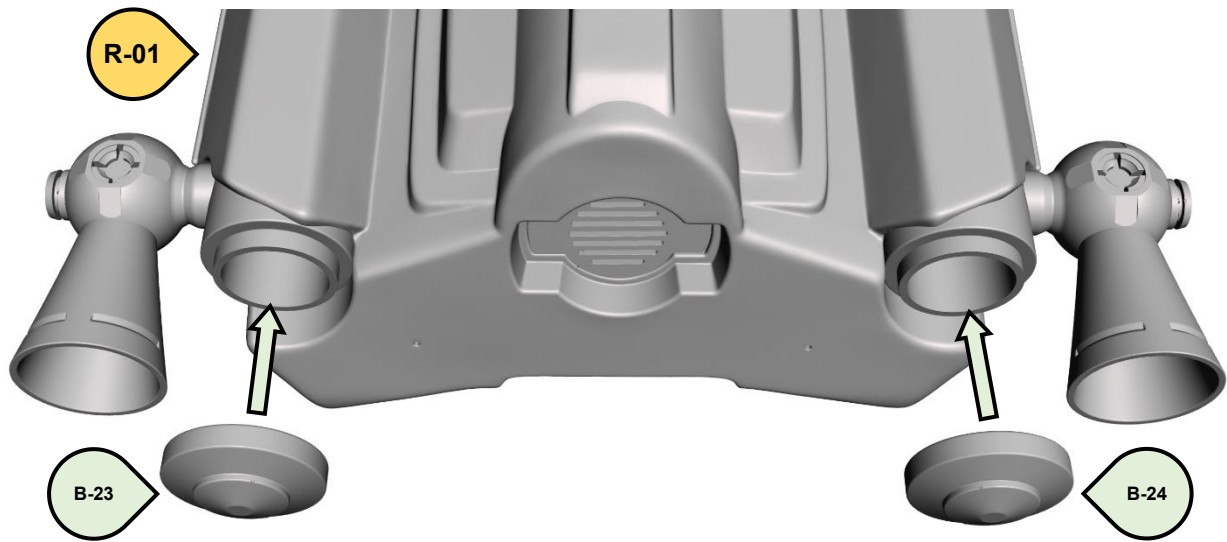
- B-25 to R-01. (Use the Larger Washer, Lock Washer and 10MM Nut)
- B-26 to R-01. (Use the Larger Washer, Lock Washer and 10MM Nut)



Glue the following parts:

- B-23 to R-01.
- B-24 to R-01.

(The Left and Right Bottom Caps are identical parts.)

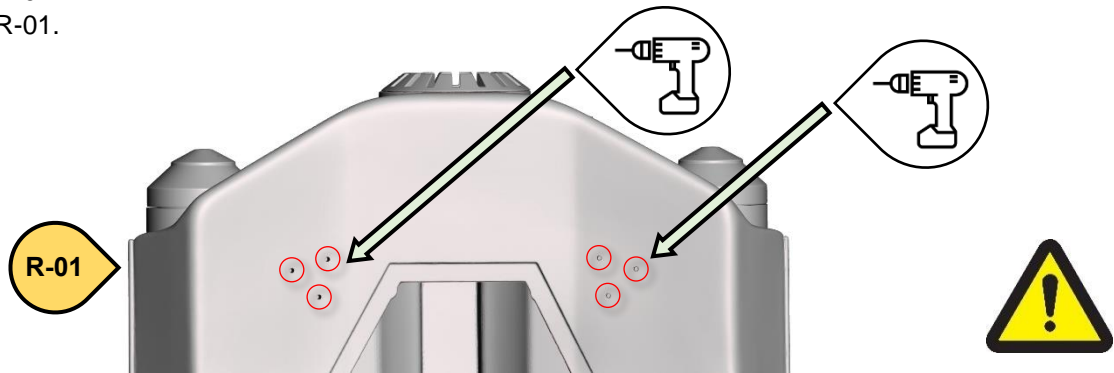


## JETPACK BUILD Z6 PARTS – 06

Pre-Drill the 6 holes located at the back side of Base R-01 Pack with a 4mm – 5/32" Drill Bits.

Install the following parts with Hardware using the hardware below. Use a Philips screwdriver and a 7mm wrench.





- B-17 to R-01.
- B-18 to R-01.

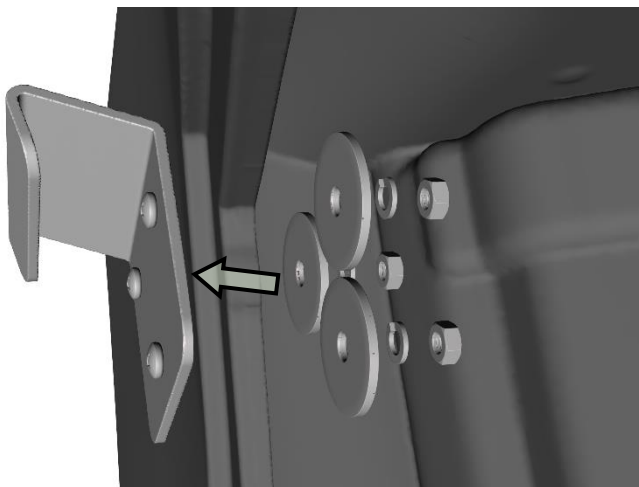
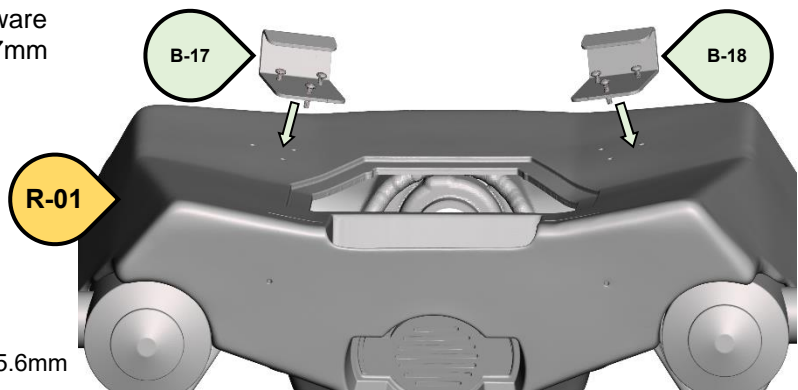


Install the following parts using the Hardware below. Use a Philips screwdriver and a 7mm wrench to tighten.

**\*\*\* DO NOT OVERTIGHTEN \*\*\***

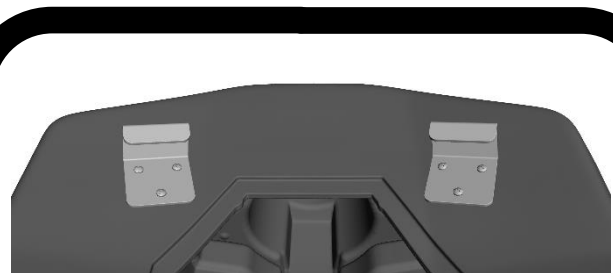
- B-17 to R-01.
- B-18 to R-01.

-  QTY 6 - M4 x 20mm Screws
-  QTY 6 - M4 Lock Washer
-  QTY 6 - 7MM Nut
-  QTY 6 - Fender Washer, OD: 25.6mm



The Fender Washer, Lock Washer & Nut go inside the Base Pack.

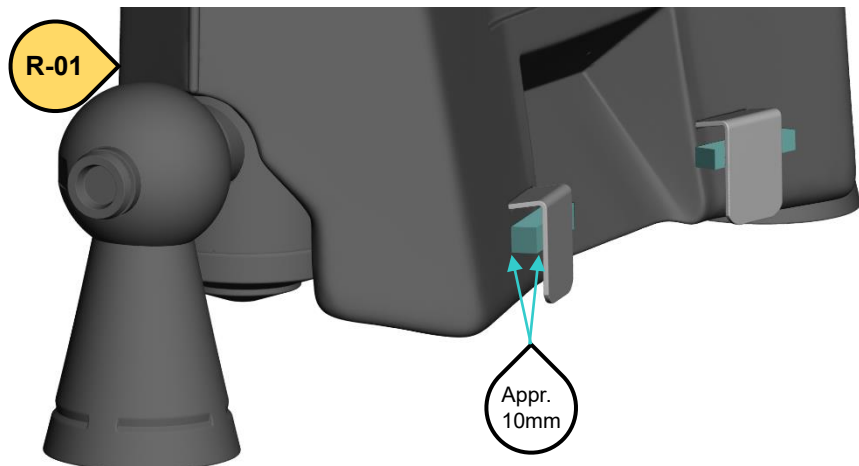
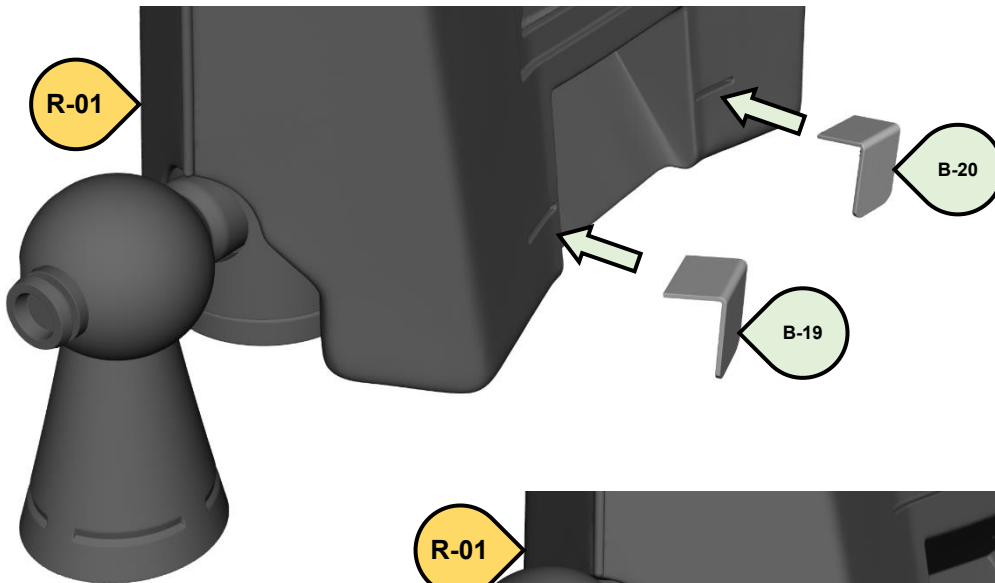
**\*\*\* WEAR GLOVES ANY TIME WHEN REACHING INTO THE BASE PACK TO PROTECT YOUR HANDS \*\*\***



## JETPACK BUILD Z6 PARTS – 07

Use a 2 Part Epoxy to adhere the following parts: The space between the B-19&B-20 from R-01 can be set to your desired distance. We suggest it not be any further then 10mm.

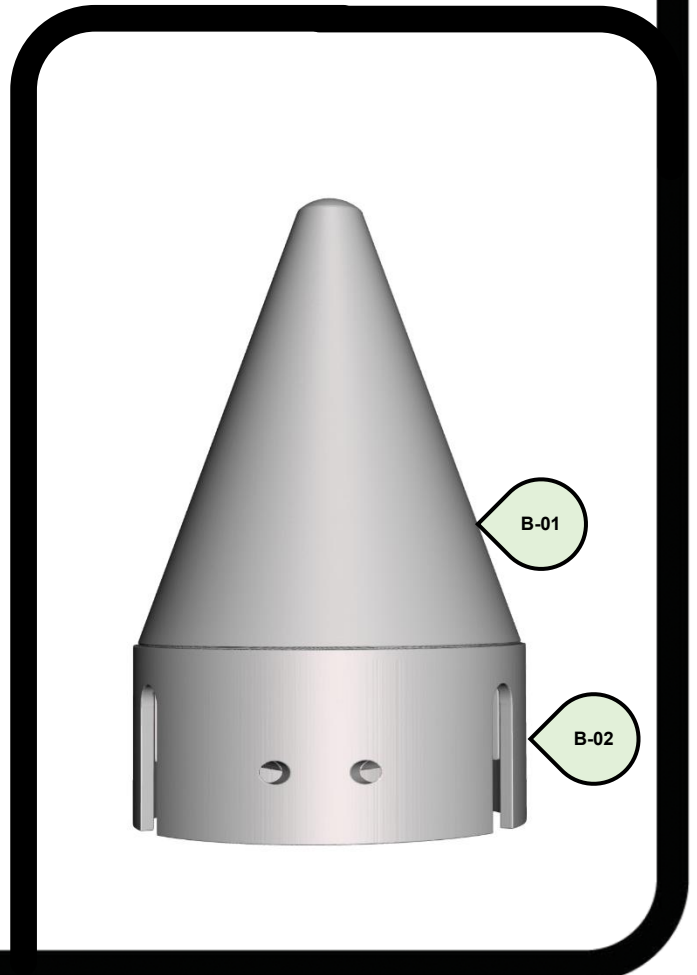
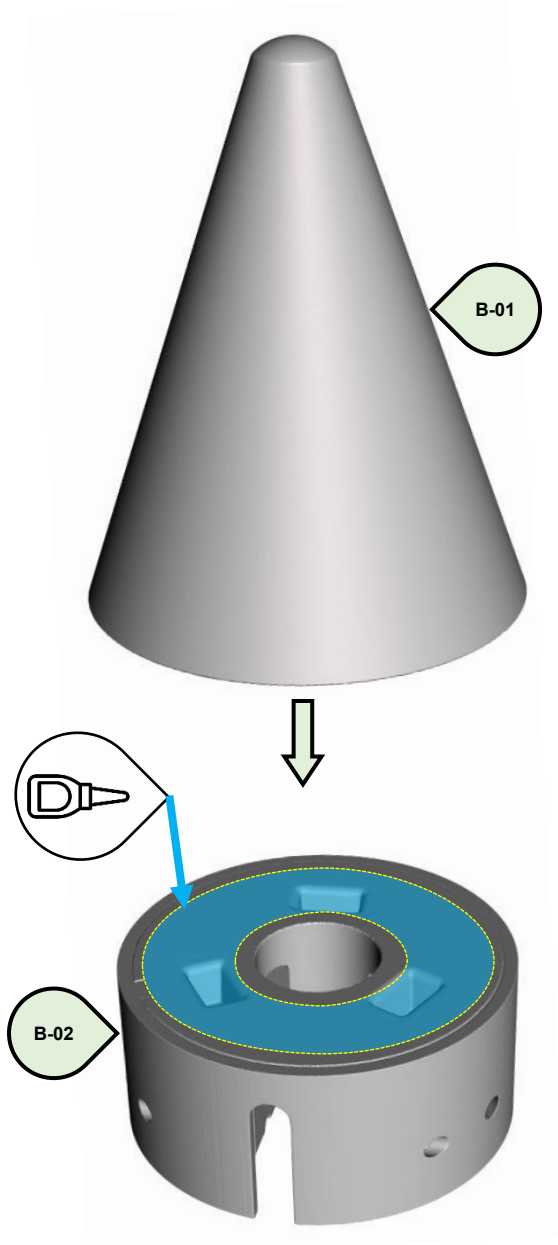
- B-19 to R-01.
- B-20 to R-01.





Glue the following parts. Avoid getting glue into the Center Hole area.

- B-01 to B-02.



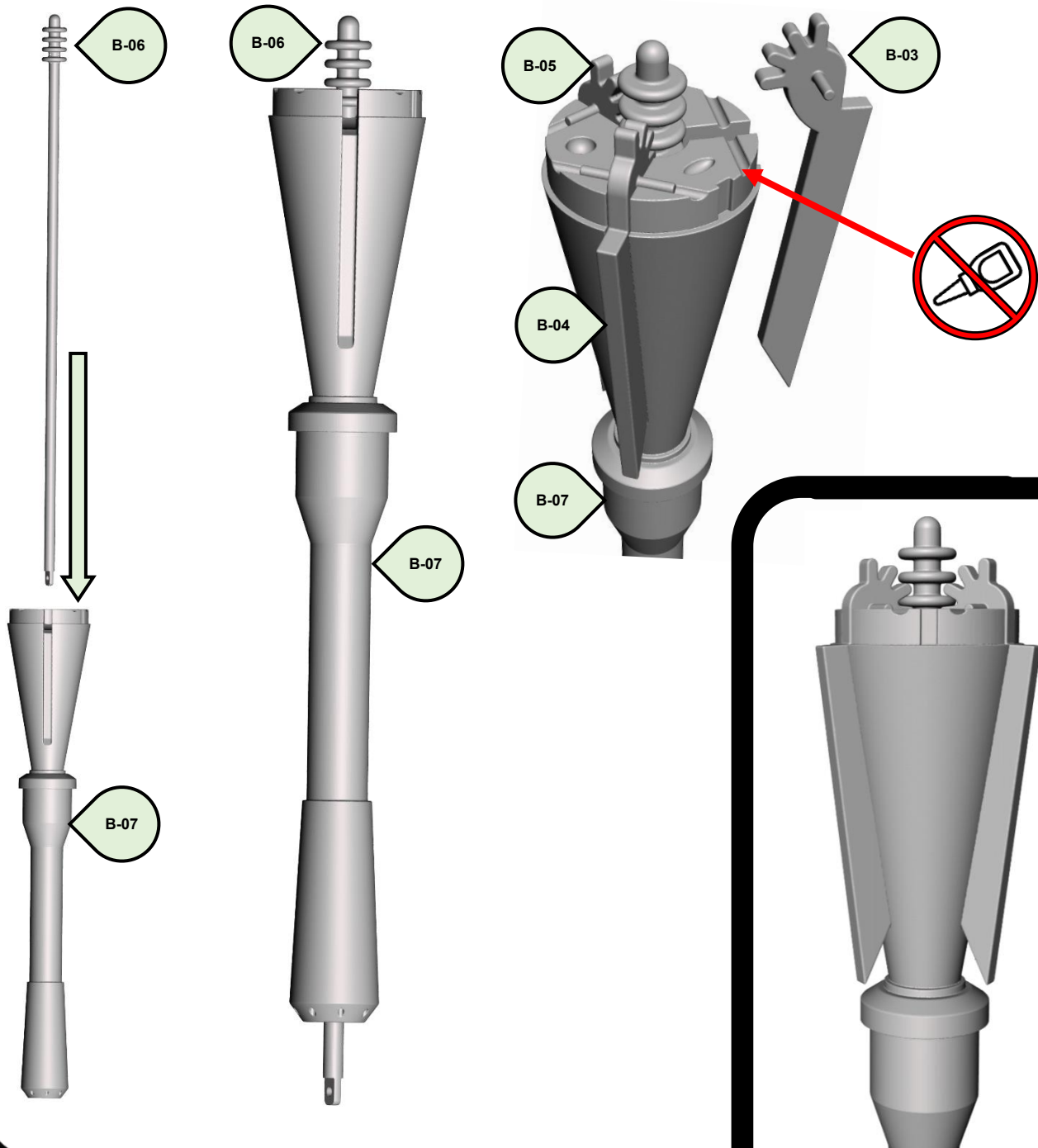


## JETPACK BUILD Z6 MISSILE PARTS – 09

Insert B-06 into the top of B-07.

Place B-03, B-04 & B-05 into the grooves of B-07.

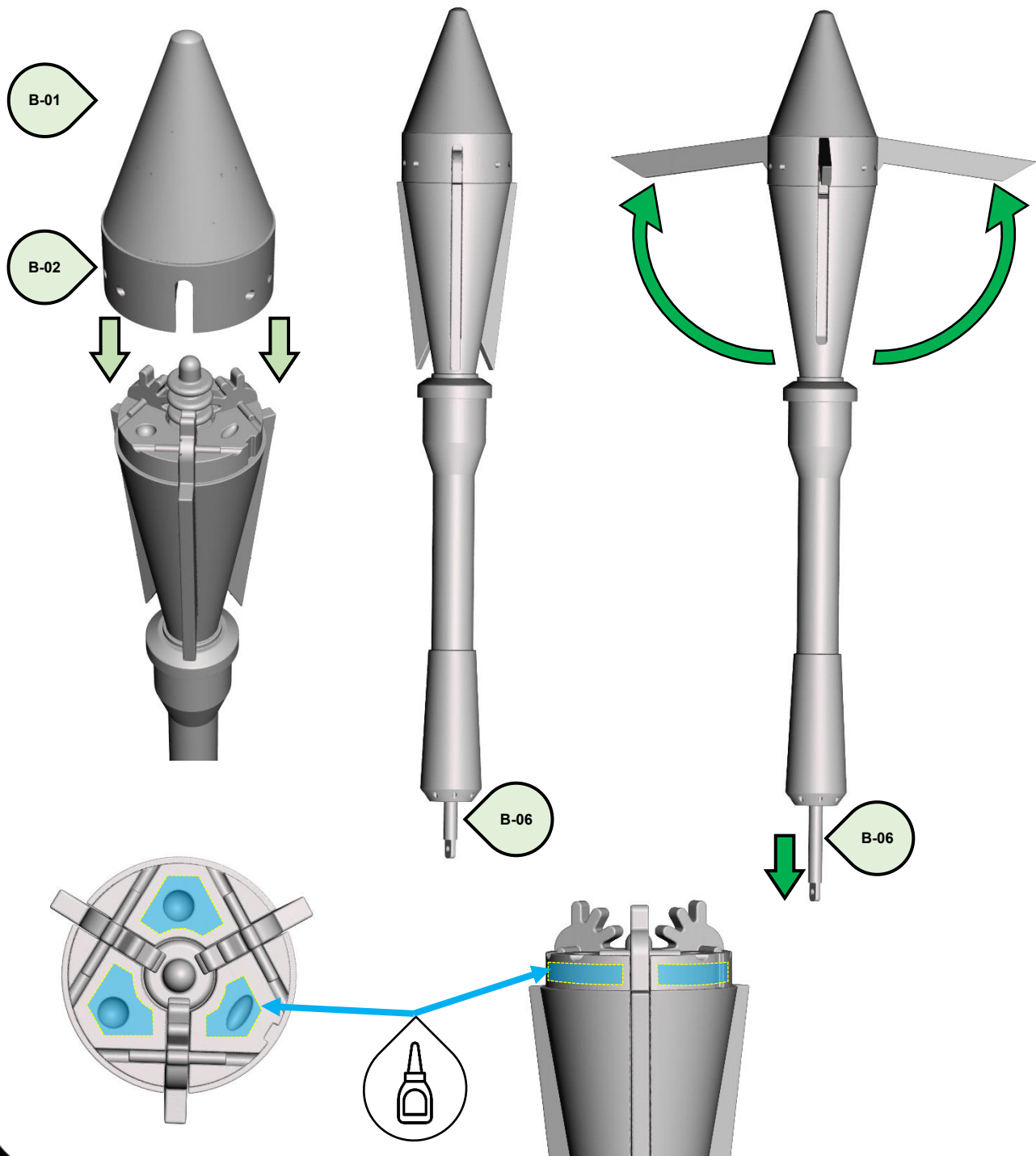
**\*\*NOT GLUE IS NEEDED FOR THESE STEPS.\*\***



## JETPACK BUILD Z6 MISSILE PARTS – 10

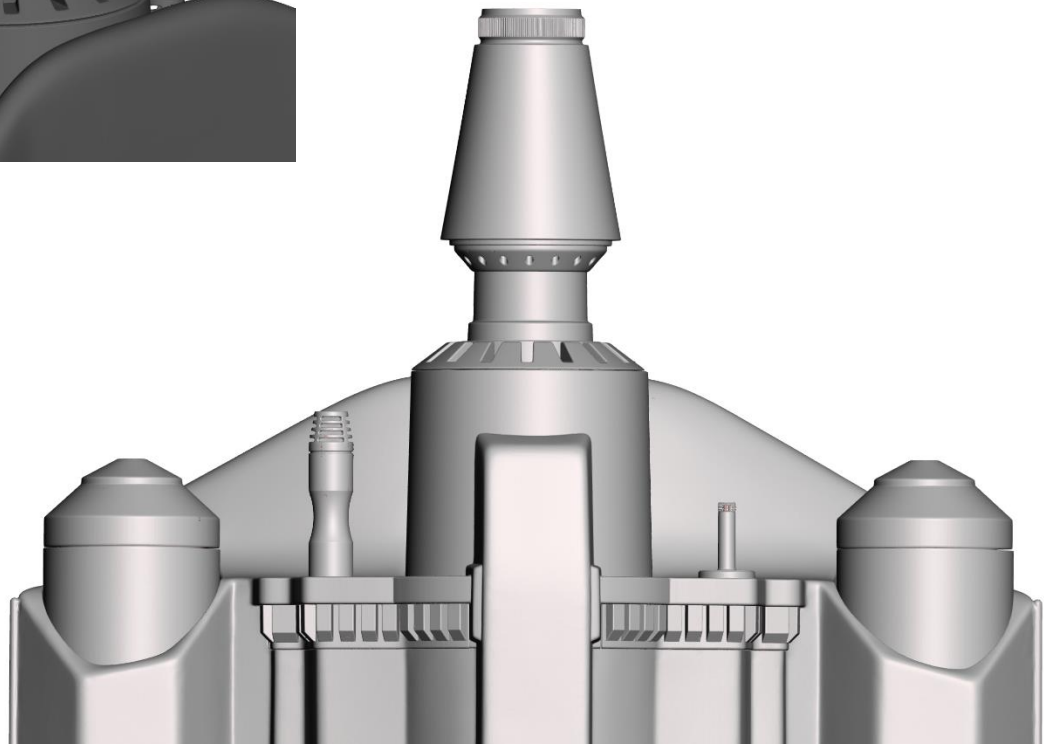
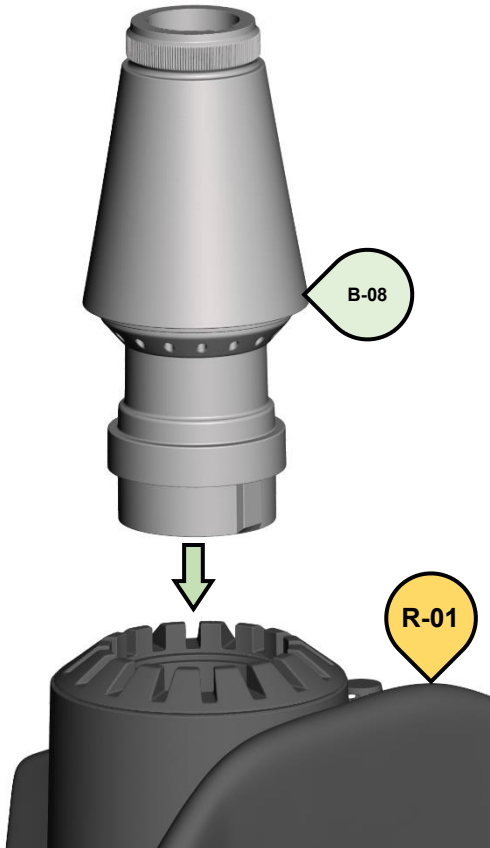
\*\*\* TEST FIT FIRST BEFORE GLUING\*\*\*

Place the Top of the Missile (Assembled B-01 & B-02) and Test Fit and make sure the Wings will move when pulling B-06 downward. Once all the parts move freely, add glue to the areas shown in the below image. Avoid using too much glue which could seize the movement of the Plunger and Wings.



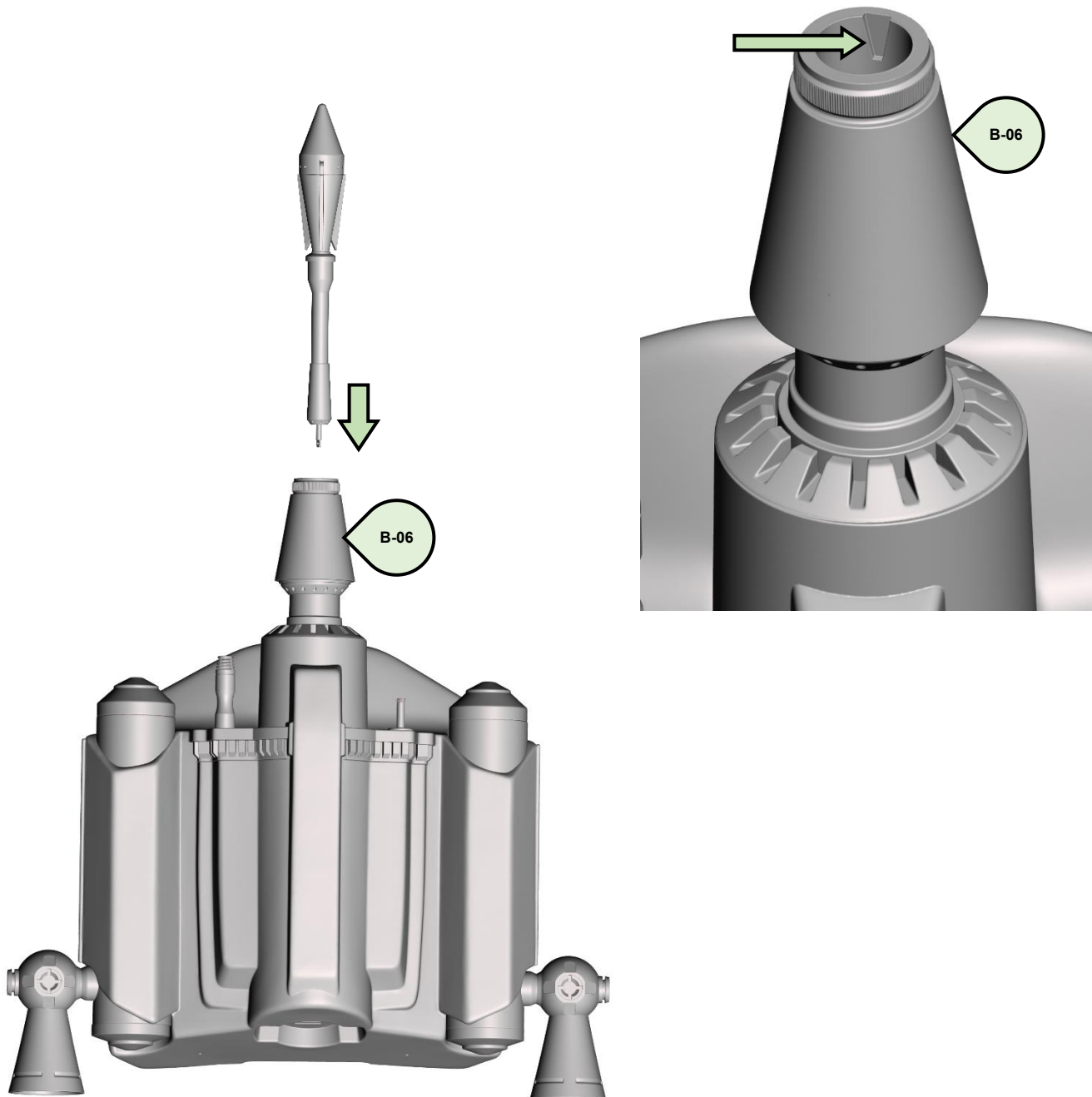
## JETPACK BUILD Z6 MISSILE PARTS – 11

Part B-08 can be installed WITH or WITHOUT glue. Having the part removable is an advantage when traveling with the Pack. Part B-08 is keyed and only goes in one way into R-01.



## JETPACK BUILD Z6 MISSILE PARTS – 12a

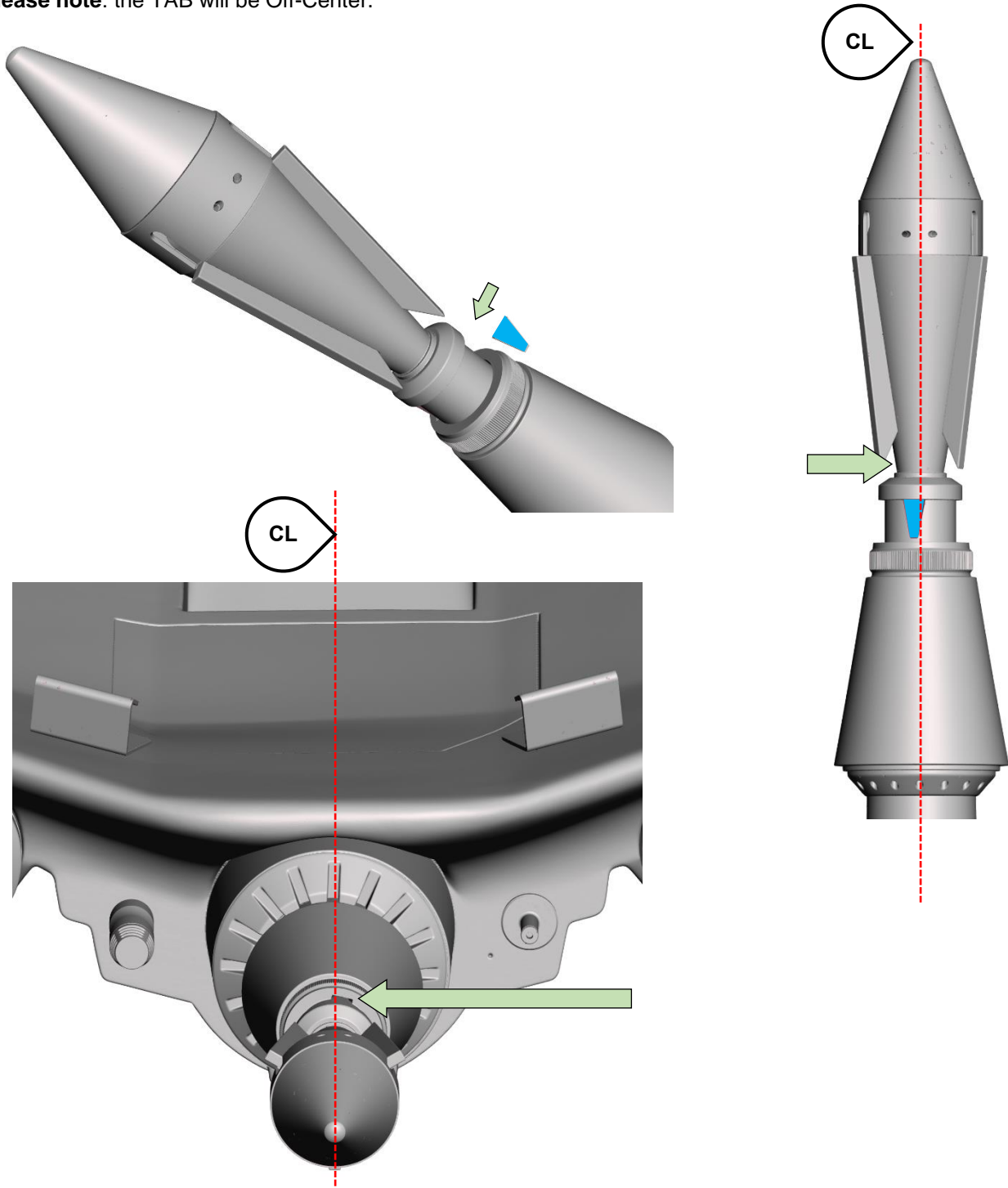
The fully assembled Missile can now be inserted into B-08. It is not required to glue the Missile. As an added feature, there is a groove on B-06 so TAB can be added to the Missile to keep it from spinning. See the next page for more information.



## JETPACK BUILD Z6 MISSILE PARTS – 12b

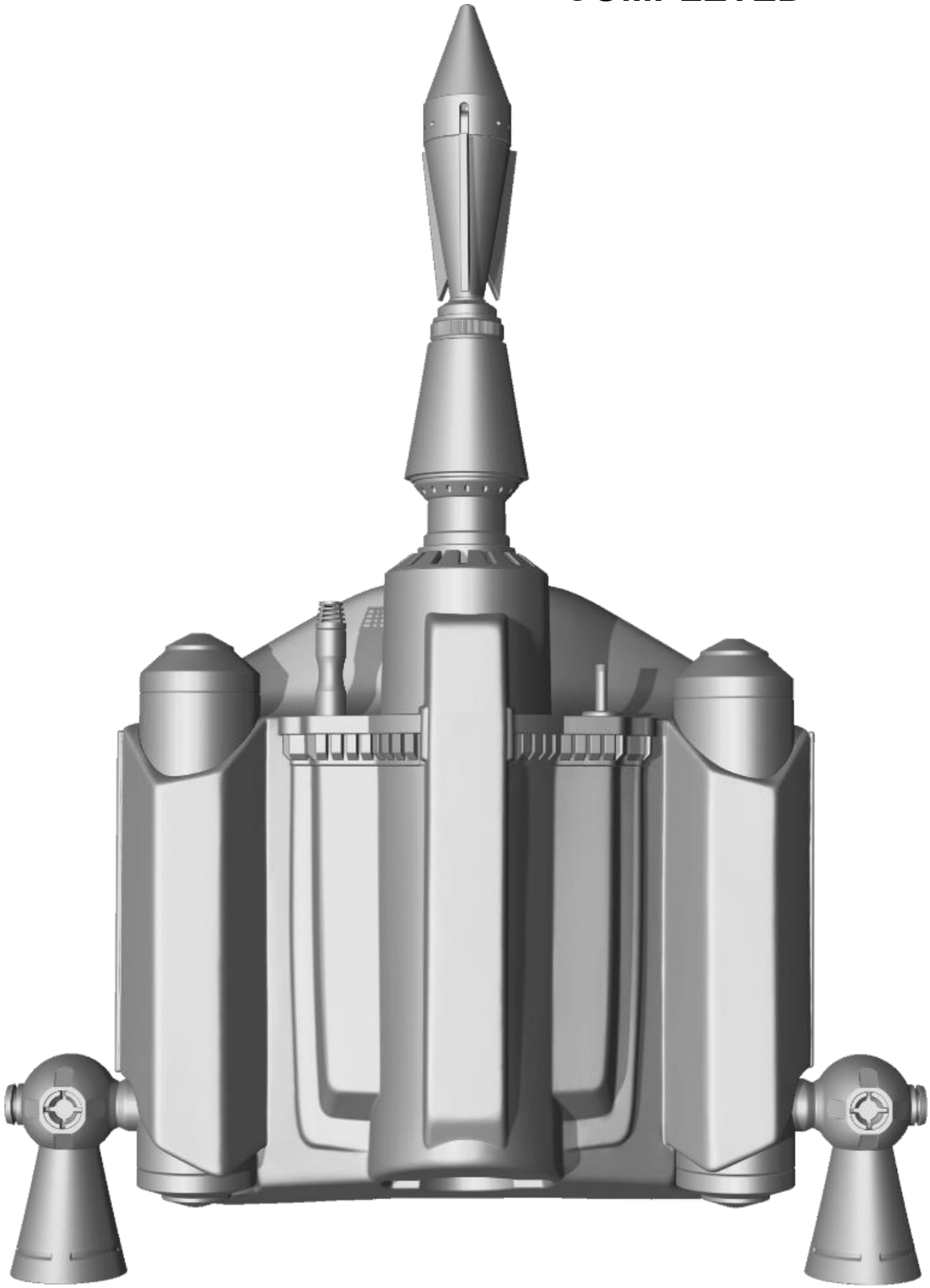
OPTIONAL: To keep the missile from rotating, a Tab (not included) can be added to the collar. See image below.

**Please note:** the TAB will be Off-Center.

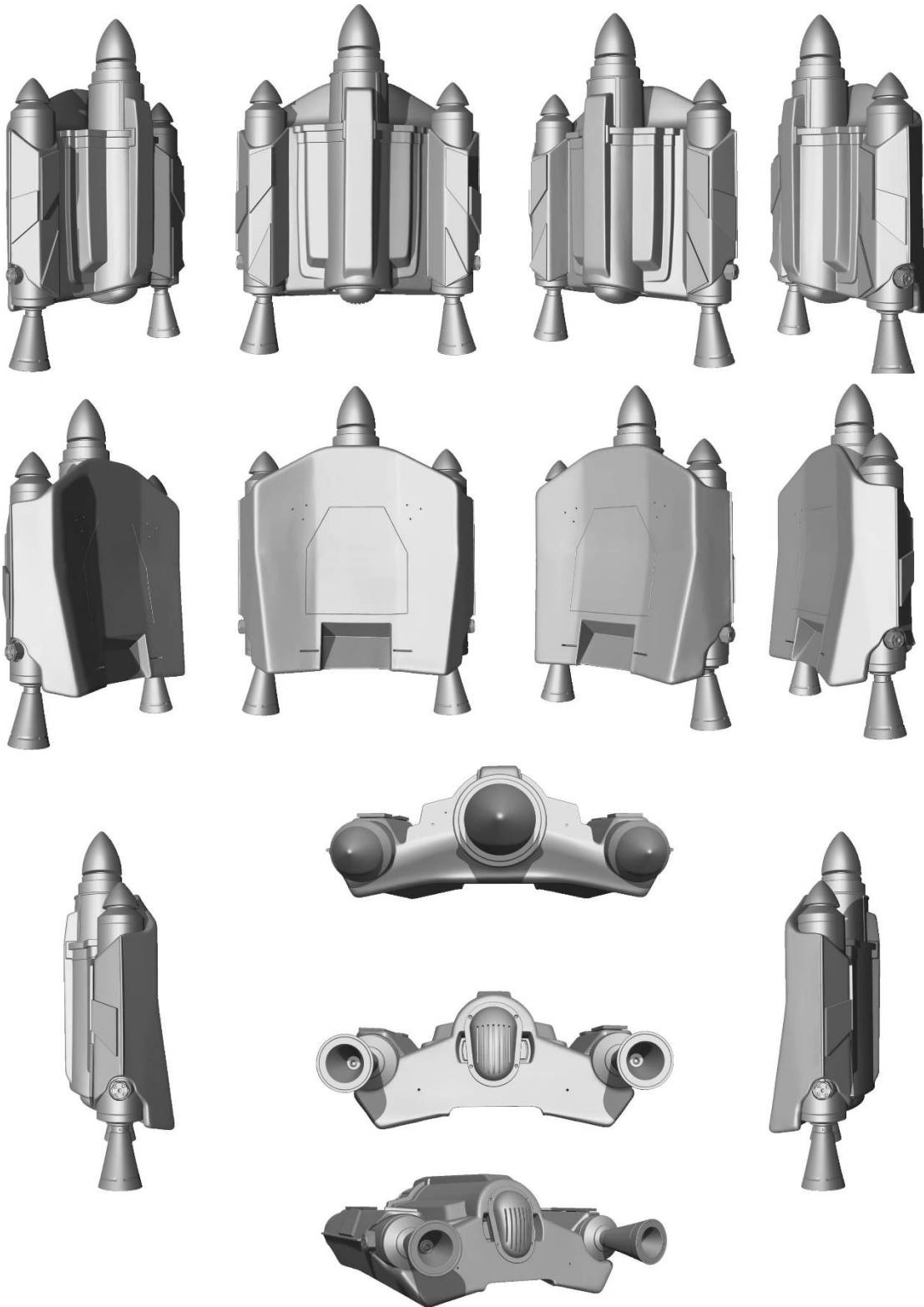


**STAR  
WARS**™

**Z6 JETPACK BUILD  
COMPLETED**



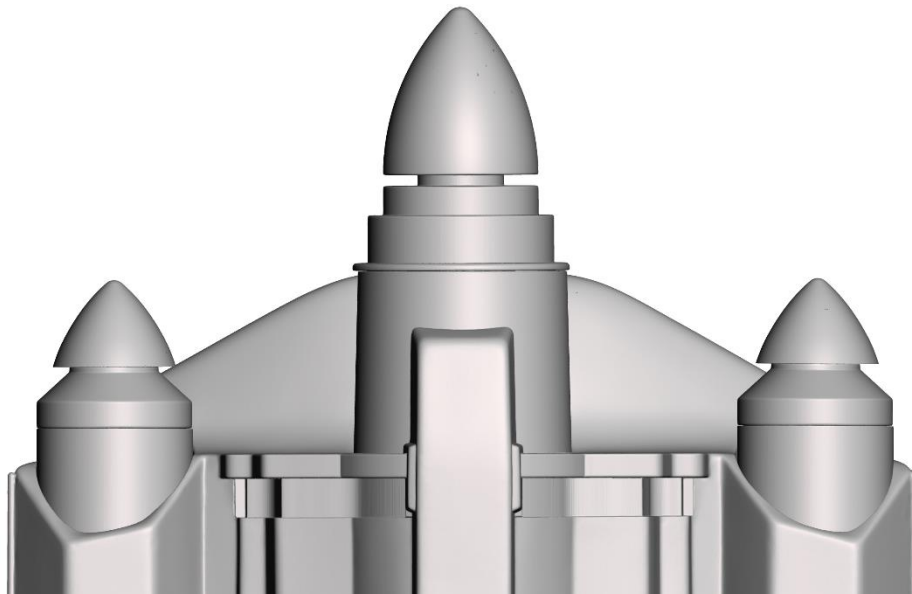
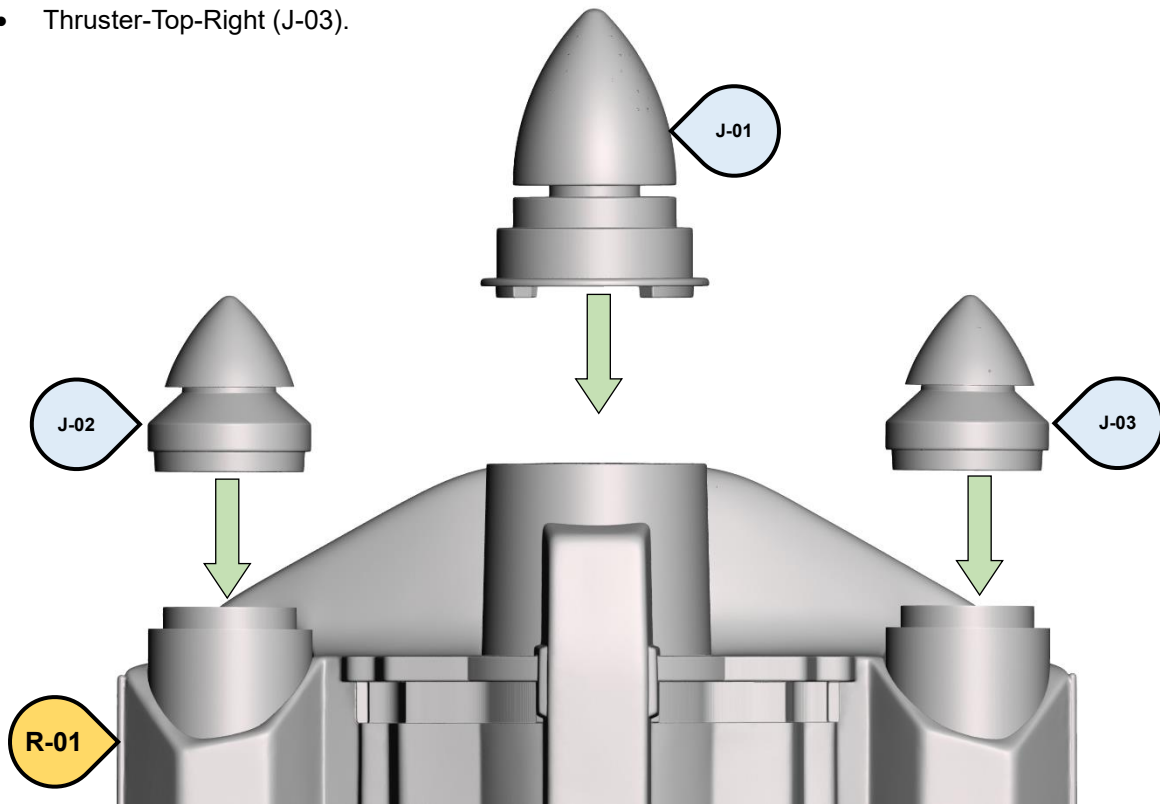




## JETPACK BUILD JT12 PARTS – 01

Glue the follow parts to the Base Pack (R-01).

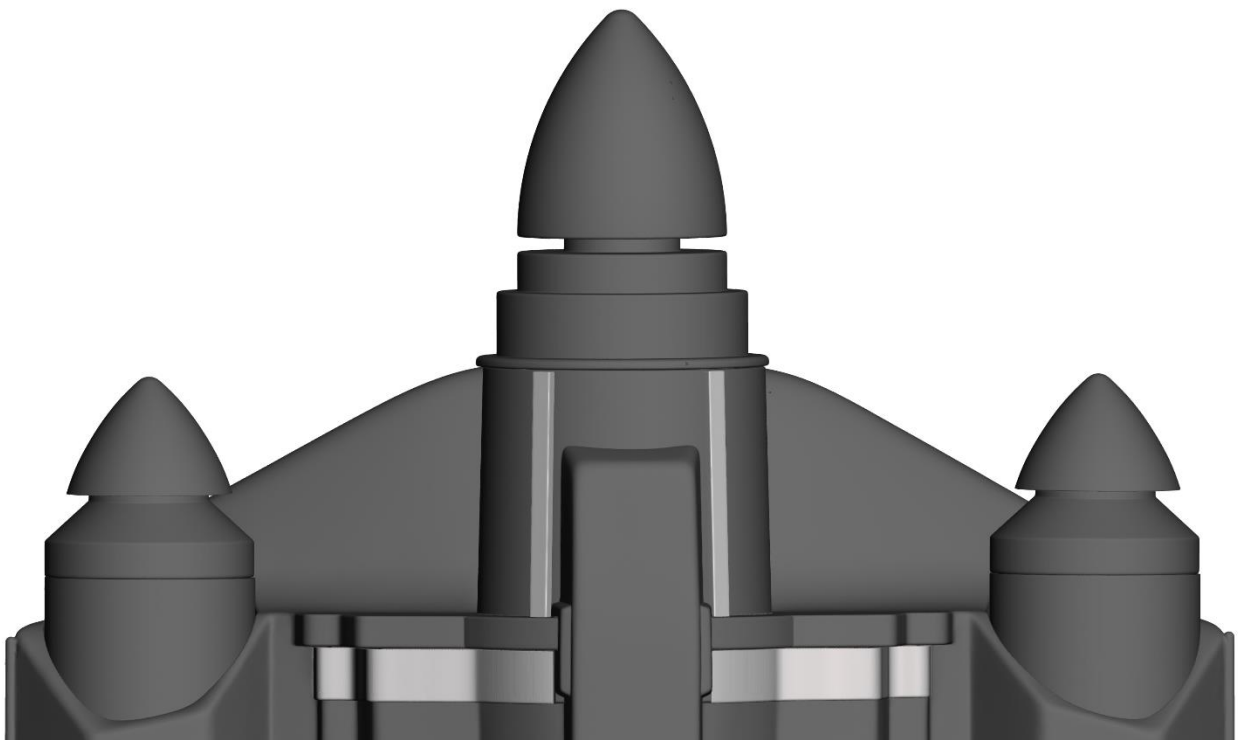
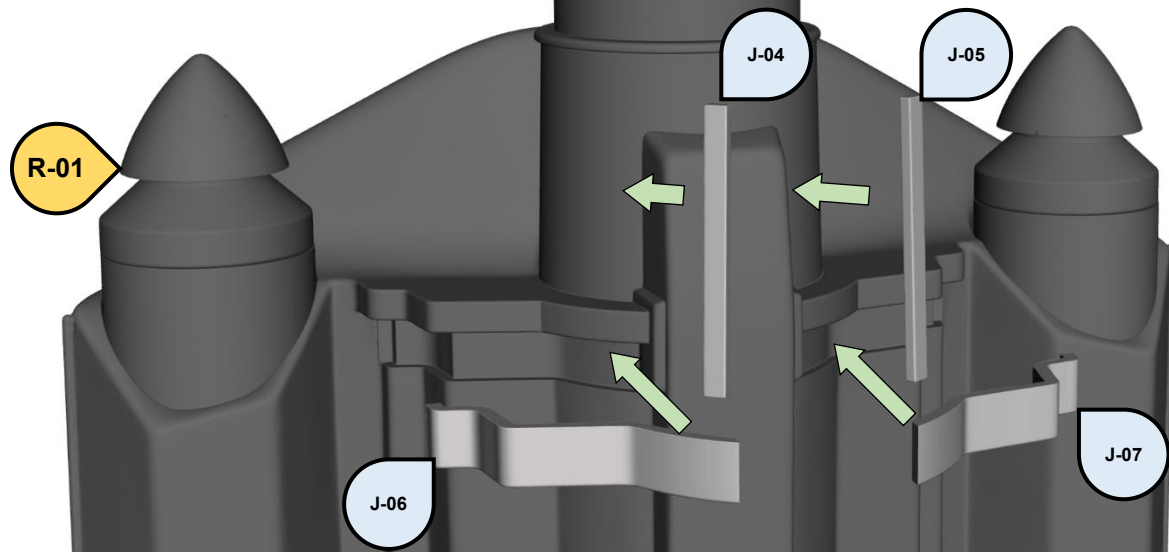
- Rocket-Top (J-01).
- Thruster-Top-Left (J-02).
- Thruster-Top-Right (J-03).



## JETPACK BUILD JT12 PARTS – 02

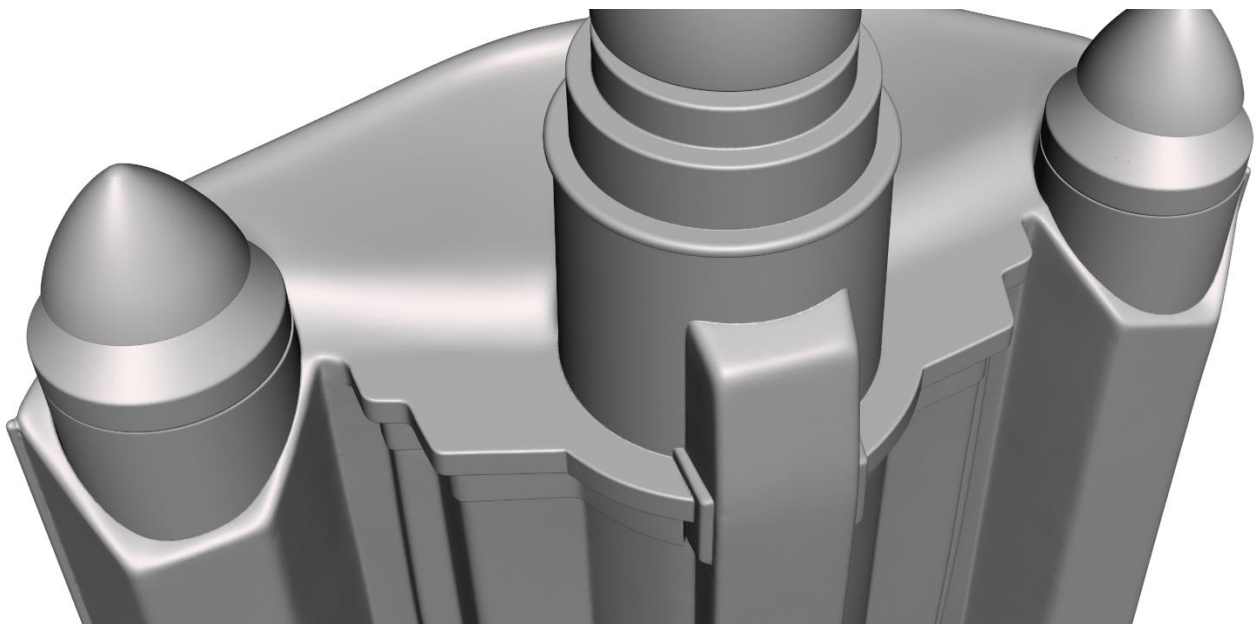
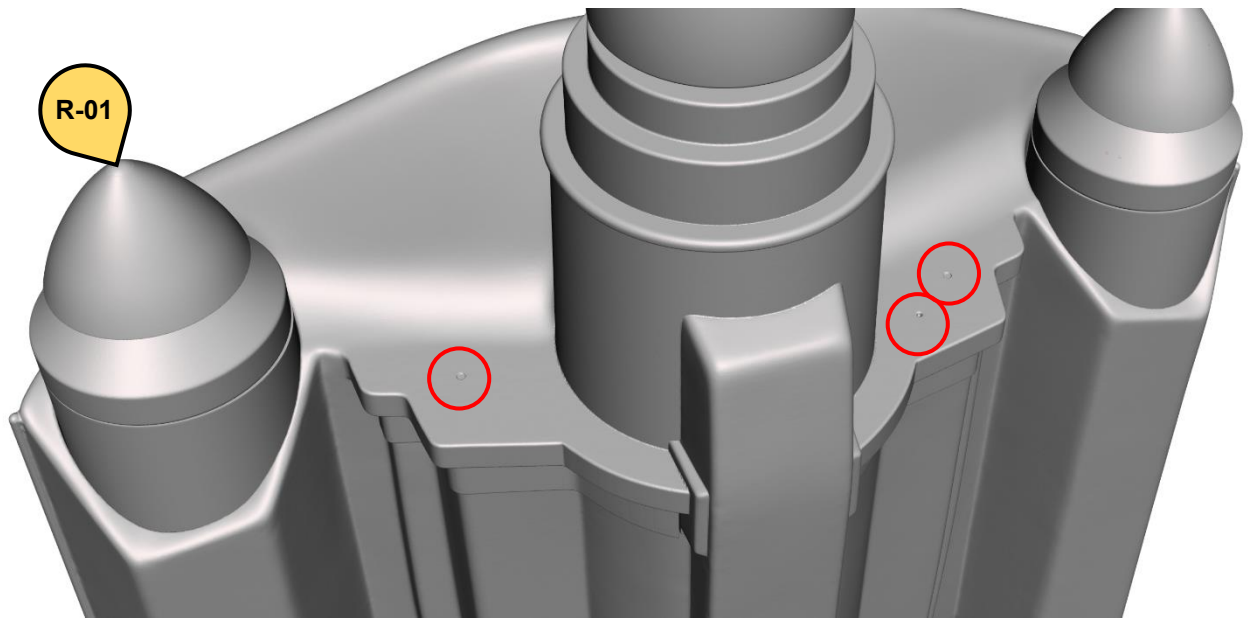
Glue the follow parts:

- J-04 to R-01
- J-05 to R-01
- J-06 to R-01
- J-07 to R-01



## JETPACK BUILD JT12 PARTS – 03

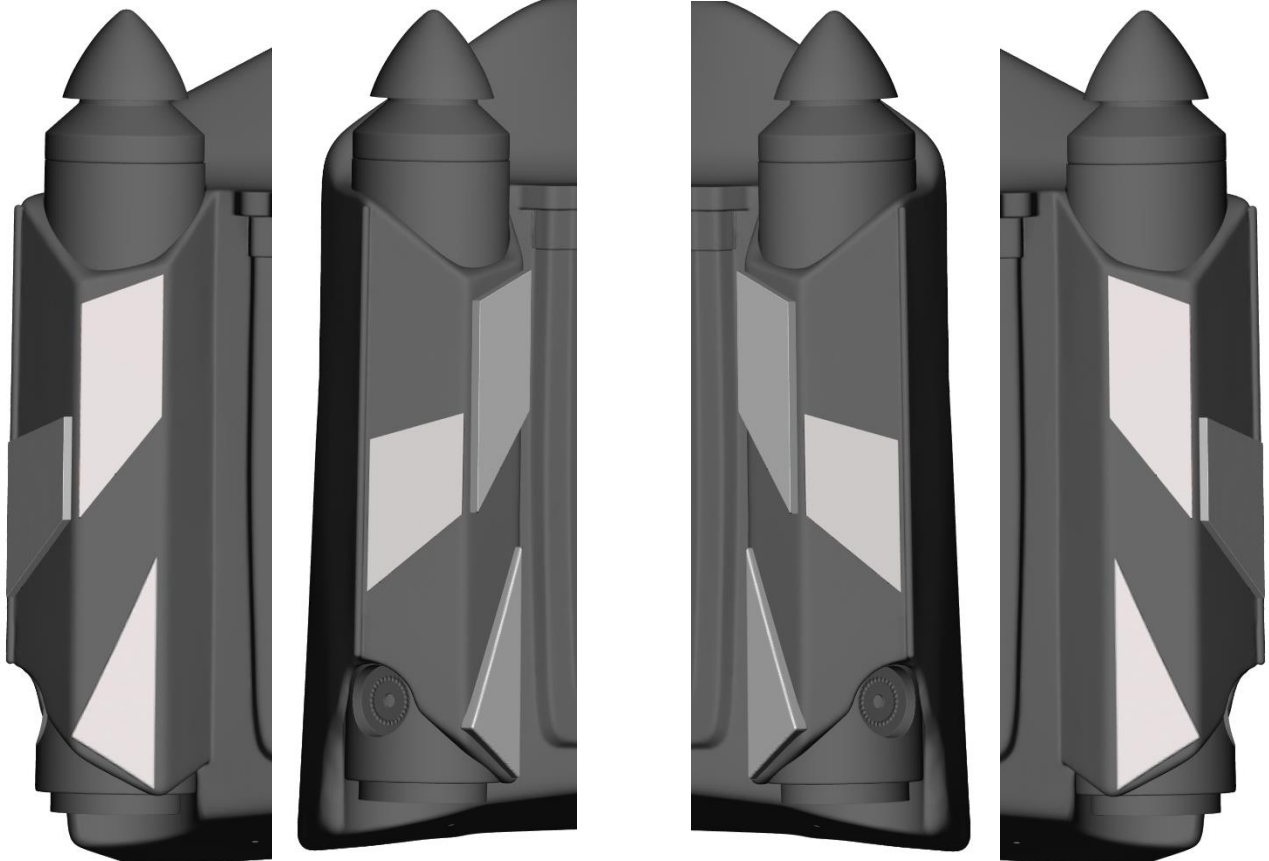
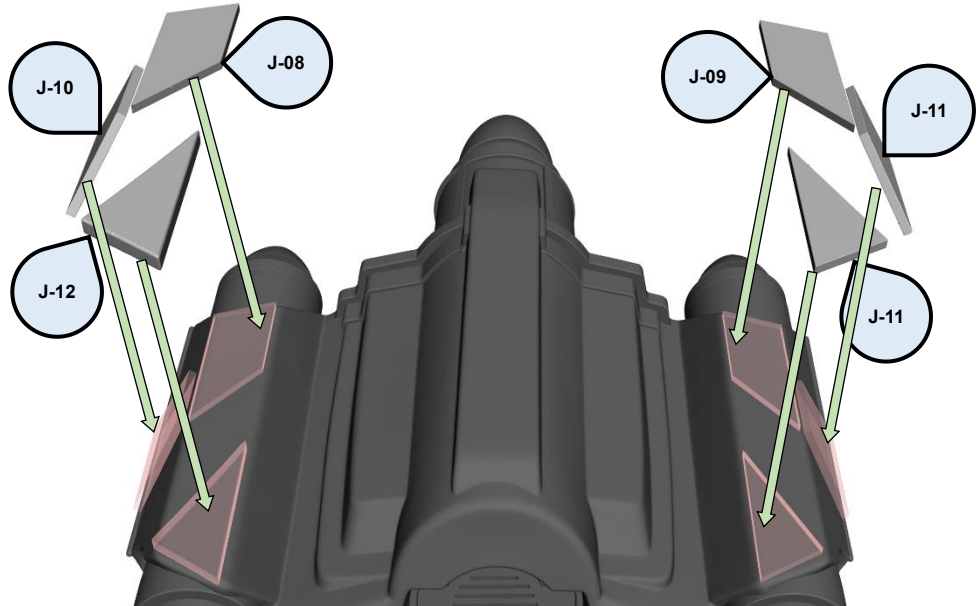
The top of the R-01 have small indents which can be filled and sanded smooth.



## JETPACK BUILD JT12 PARTS – 04

Glue the follow parts:

- J-08 to R-01
- J-09 to R-01
- J-10 to R-01
- J-11 to R-01
- J-12 to R-01
- J-13 to R-01

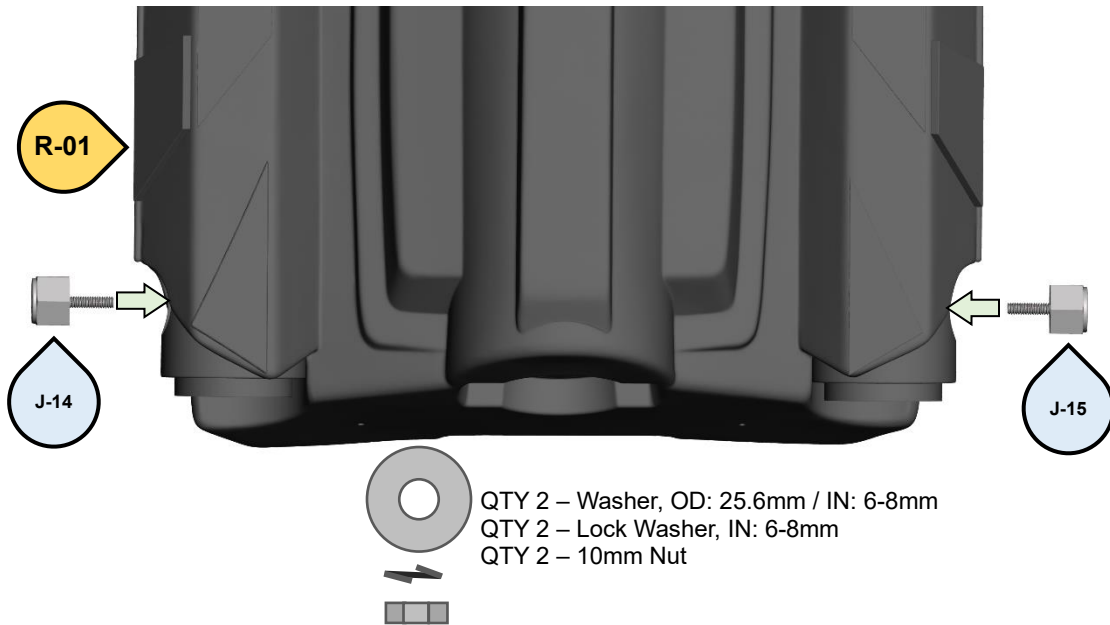




## JETPACK BUILD JT12 PARTS – 05

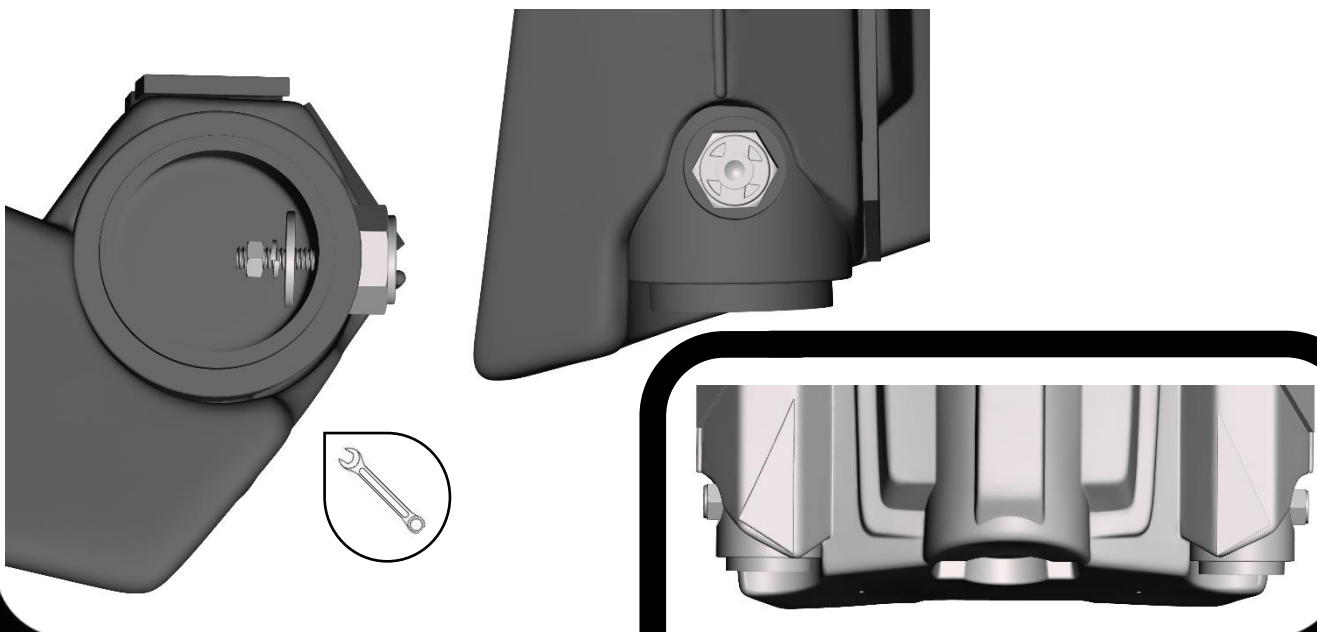
Insert J-14 & J-15 to the hole near the bottom outside of the R-01. Use the hardware below and a 10mm Wrench or Socket.

- J-14 to R-01. (Use the Larger Washer, Lock Washer, and 10mm Nut)
- J-15 to R-01. (Use the Larger Washer, Lock Washer, and 10mm Nut)



From the Bottom of R-01 the hardware can be attached using a 10mm Wrench. The Washer goes on First, then the Lock Washer and then the 10mm Nut.

**\*\*\* DO NOT OVERTIGHTEN \*\*\***

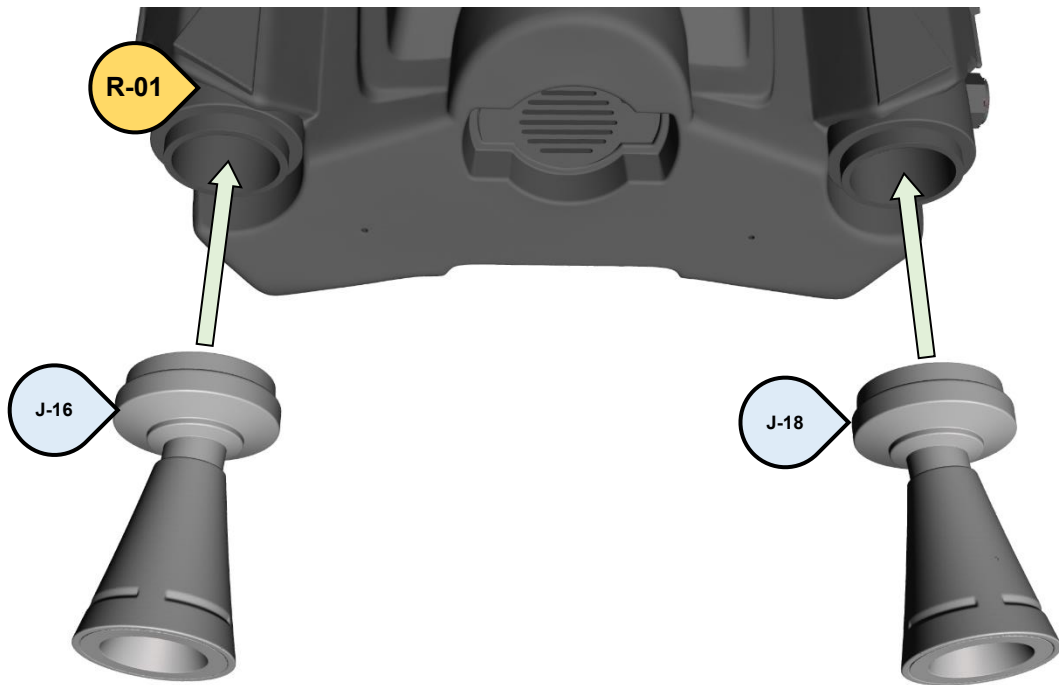




Glue the following parts:

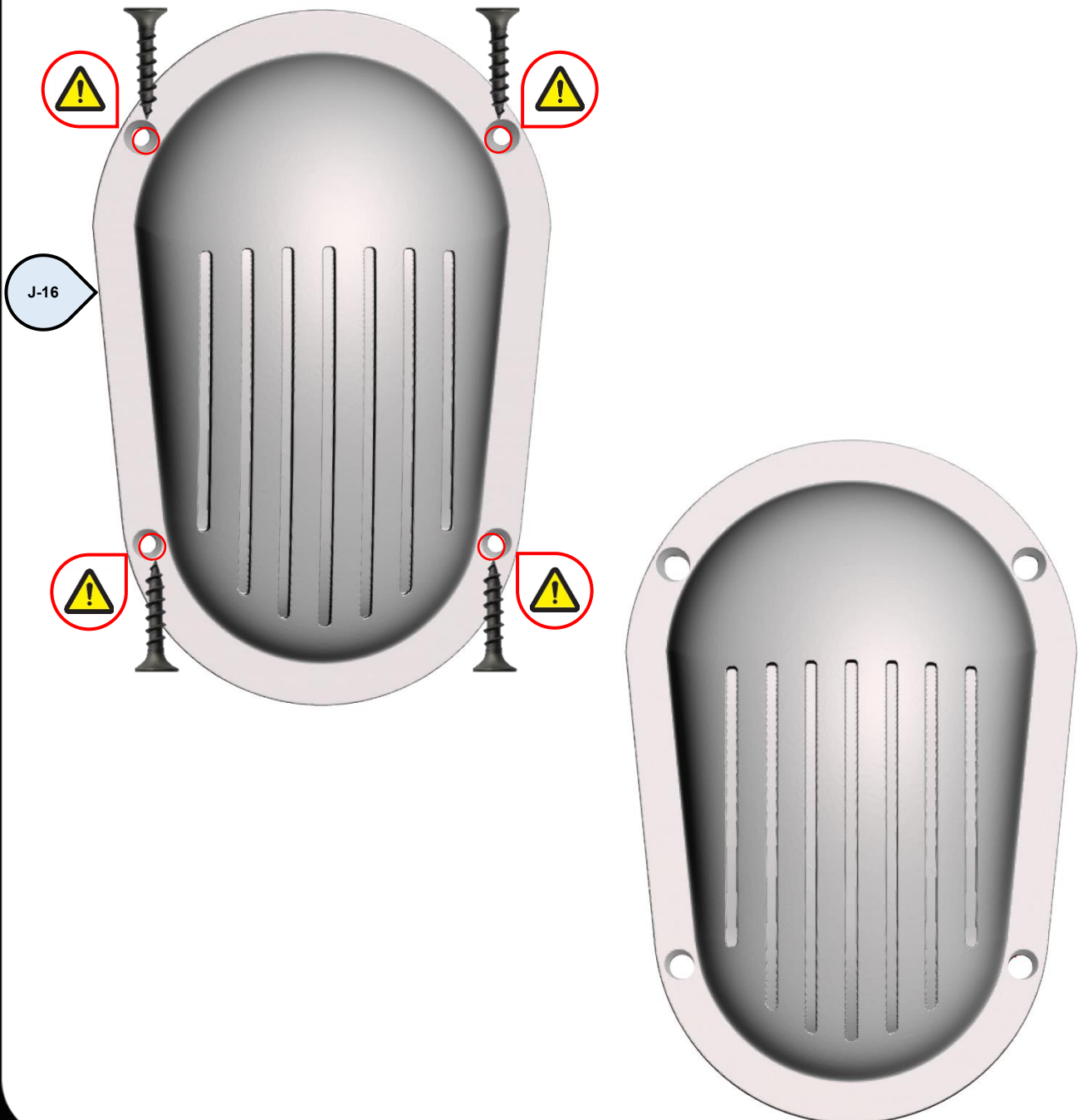
- J-16 to R-01.
- J-18 to R-01

**\*\* Part J-16 & J-18 are identical.\*\***



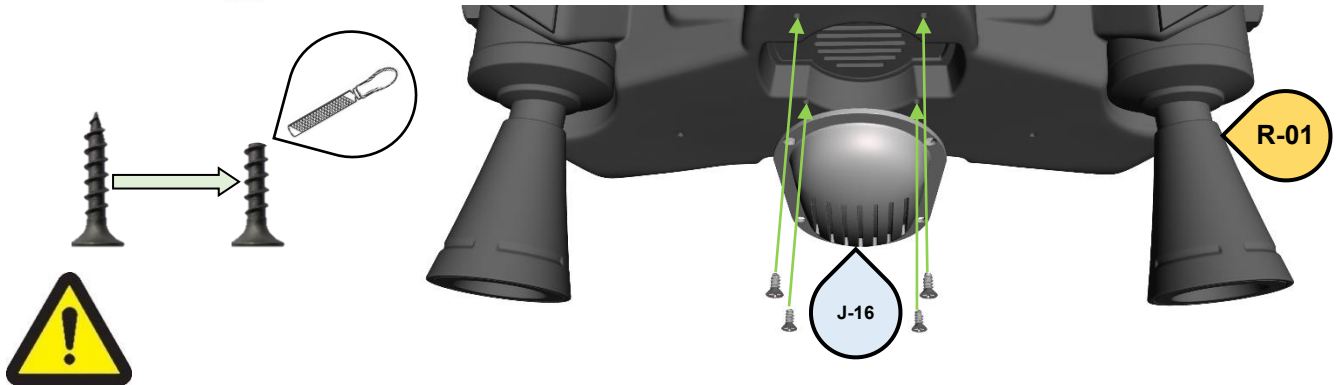
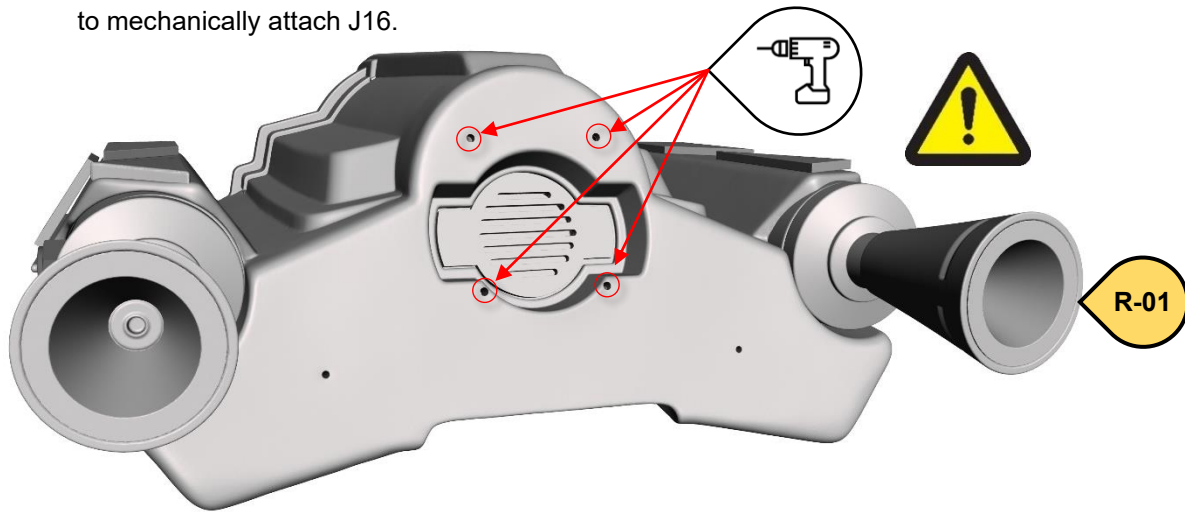
On part J-16 the holes need to be increased so the Drywall Screws can easily pass through. Use a small, rounded Hand File and increase the hole to the center of the piece (see image). The outer portion of J-16 is fragile.

**\*\*\* DO NOT USE A DRILL OR ROTARY TOOL TO AVOID BREAKING THE PART \*\*\***



## JETPACK BUILD JT12 PARTS – 08

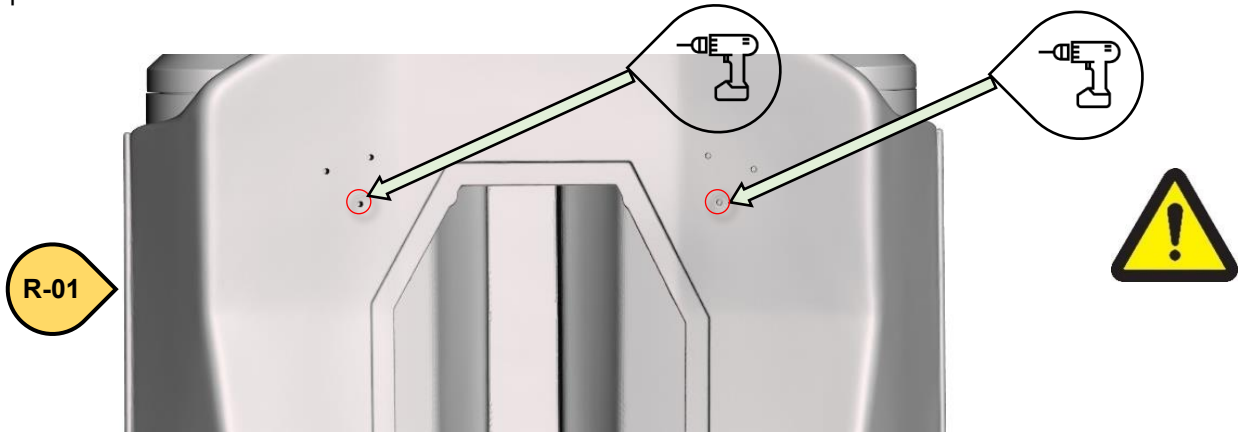
- Align J-16 to the bottom of R-01 and use a pencil to mark the 4 holes and drill a 5/32" or 4mm Hole. The Drywall screws should easily insert into the holes a screw driver is NOT needed.
- Grind down the pointed tips of the Drywall Screws using a file or Rotary Tool
- Glue J-16 and the Drywall Screws to R-01. The Drywall Screws are decorative and should not be used to mechanically attach J16.



This step is optional. On the back of R-01 there are holes which can be Bondo filled and sanded smooth.



Pre-Drill the lower holes as shown below located at the back side of R-01 with a 4mm – 5/32" Drill Bits. The Upper Holes are not used.



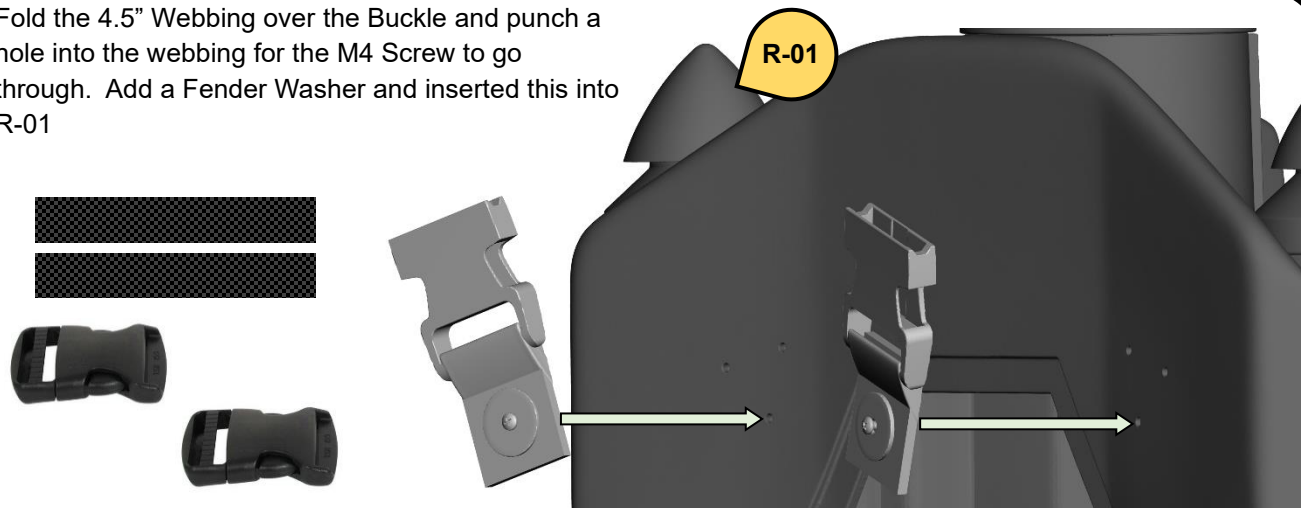
The following parts are used below for the following steps.

- Qty 3 – 1.5" Side Release Buckle.
- Cut 1.5" webbing into 4 pieces to these lengths.
  - a. Qty 3 – 4.5" length.
  - b. Qty 1 – 8-9" length.

- QTY 5 - M4 x 20mm Screws
- QTY 5 - M4 Lock Washer
- QTY 5 - 7MM Nut
- QTY 10 - Fender Washer, OD: 25.6mm



Fold the 4.5" Webbing over the Buckle and punch a hole into the webbing for the M4 Screw to go through. Add a Fender Washer and inserted this into R-01





## JETPACK BUILD JT12 PARTS – 11

Install the following parts using the Hardware below. Use a Philips screwdriver and a 7mm wrench to tighten.

**\*\*\* DO NOT OVERTIGHTEN \*\*\***



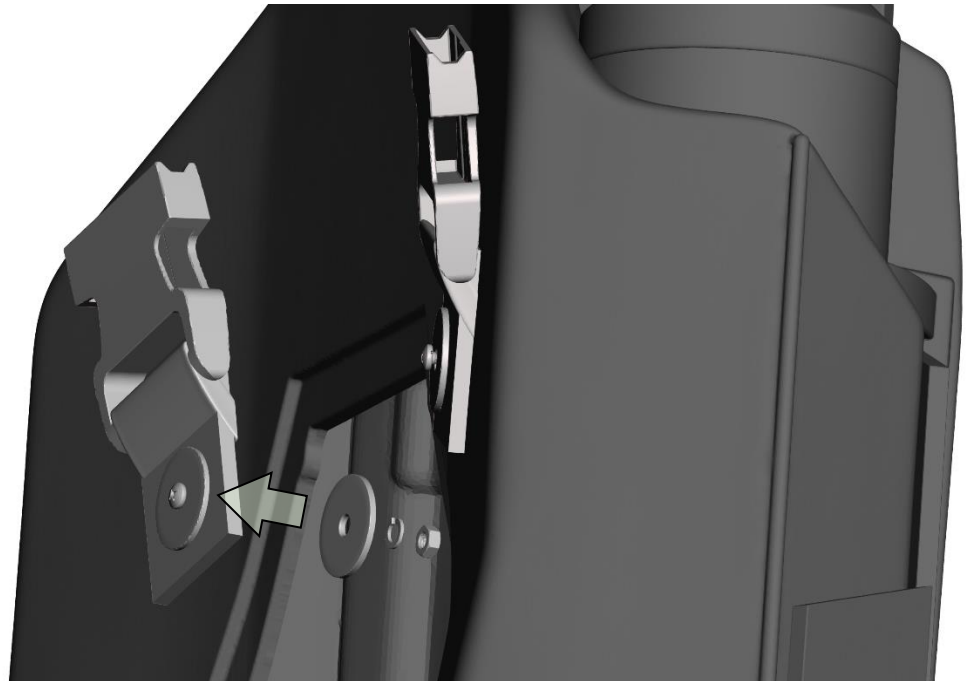
QTY 2 - M4 x 20mm Screws

QTY 2 - M4 Lock Washer

QTY 2 - 7MM Nut

QTY 4 - Fender Washer, OD: 25.6mm





**\*\*\* WEAR GLOVES ANY TIME WHEN  
REACHING INTO THE BASE PACK TO  
PROTECT YOUR HANDS \*\*\***

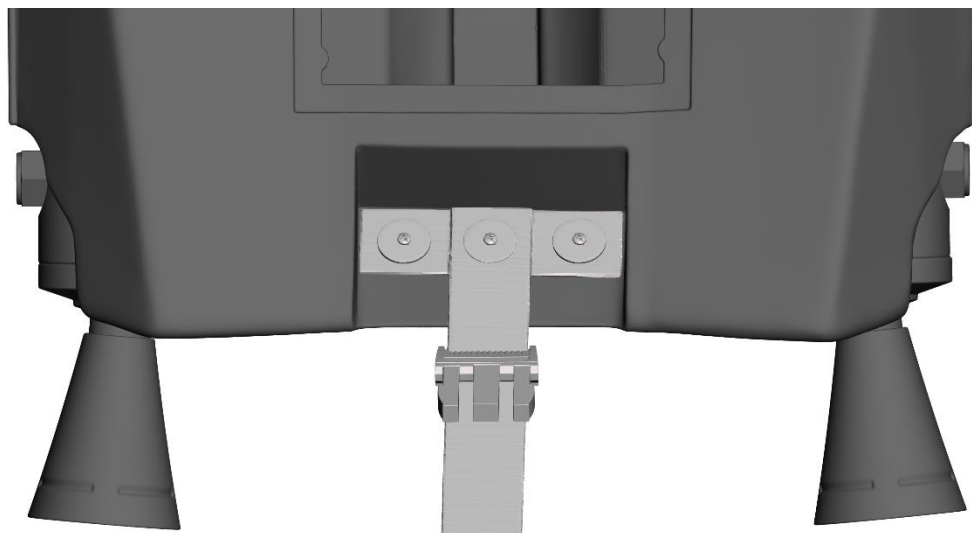
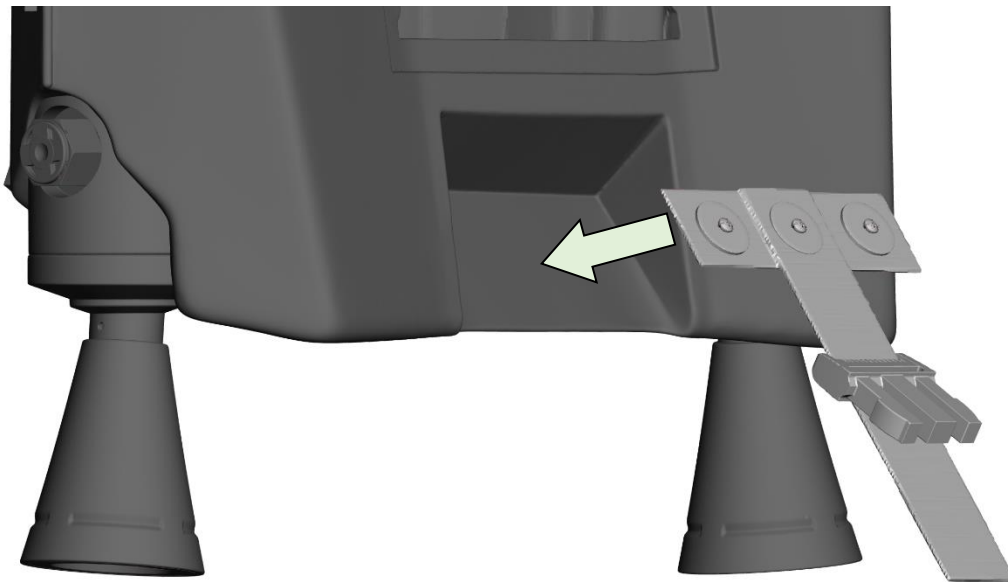




## JETPACK BUILD JT12 PARTS – 12

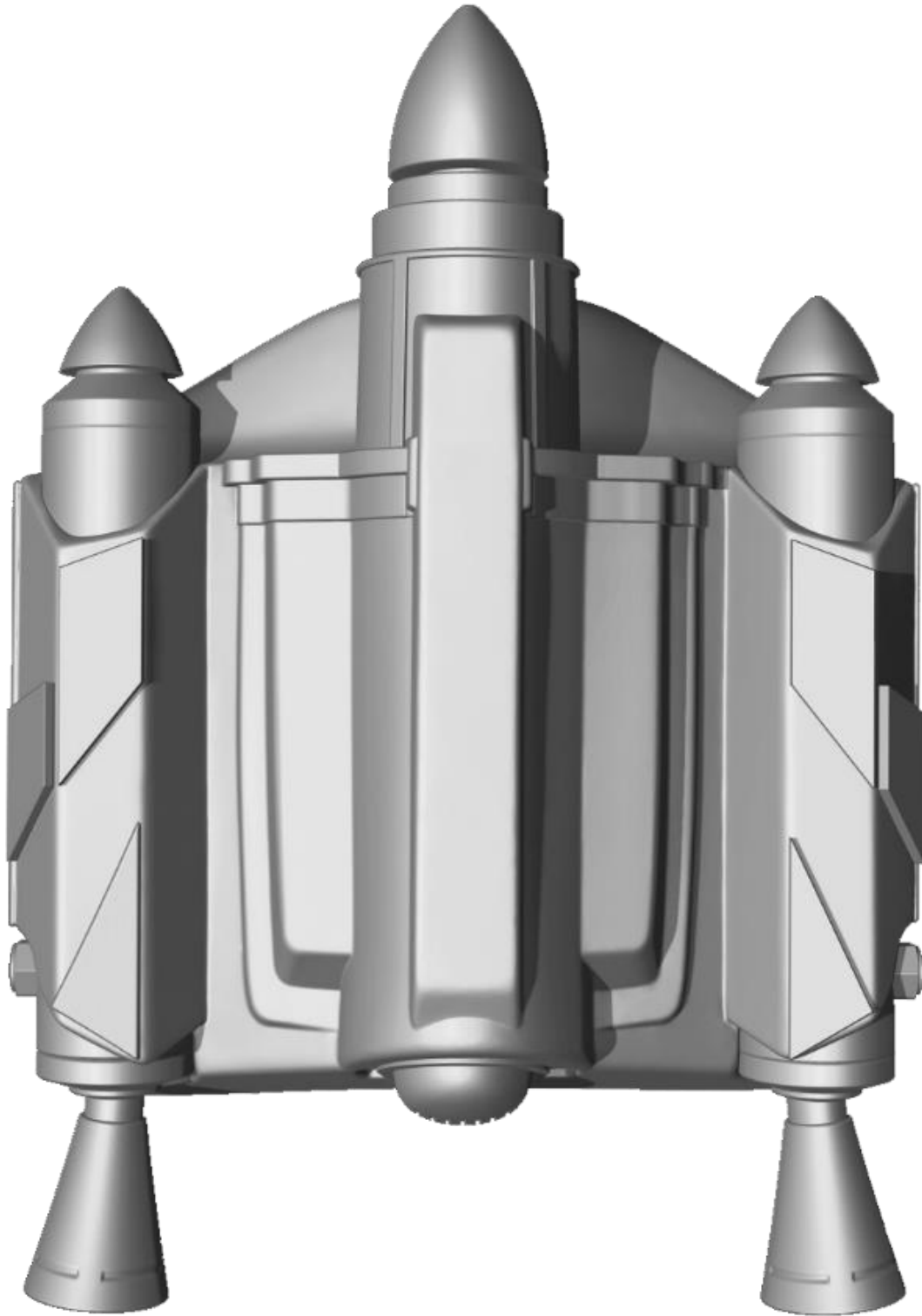
Install the following parts using the Hardware below. Use a Philips screwdriver and a 7mm wrench to tighten.  
\*\*\* DO NOT OVERTIGHTEN \*\*\*

-  QTY 3 - M4 x 20mm Screws
-  QTY 3 - M4 Lock Washer
-  QTY 3 - 7MM Nut
-  QTY 6 - Fender Washer, OD: 25.6mm



**STAR  
WARS**™

**JT12 JETPACK BUILD  
COMPLETED**



**STAR  
WARS™**

**PAGE LEFT INTENTIONALLY BLANK**