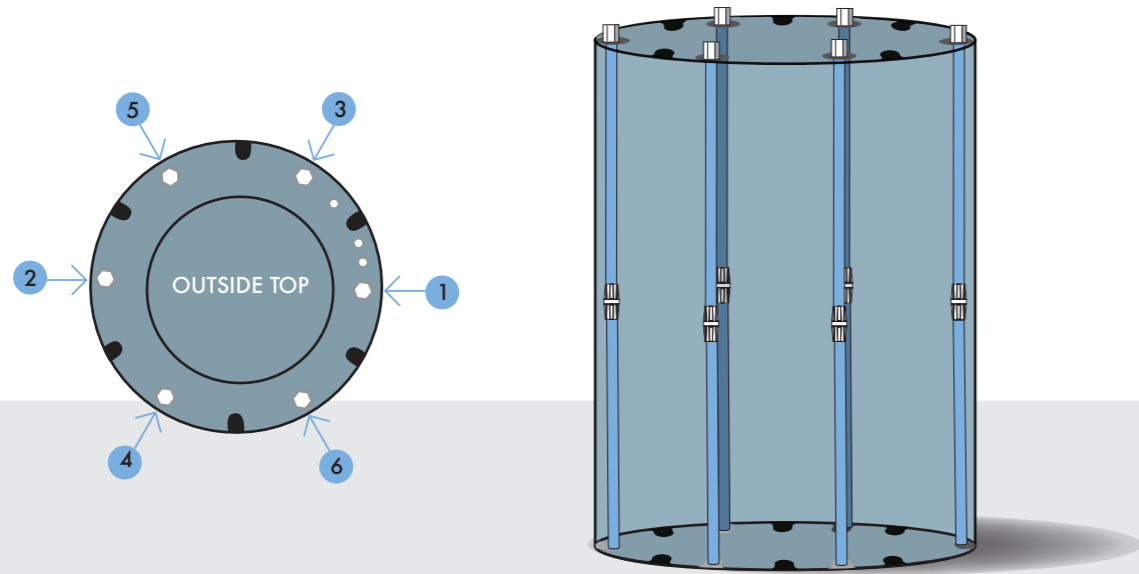


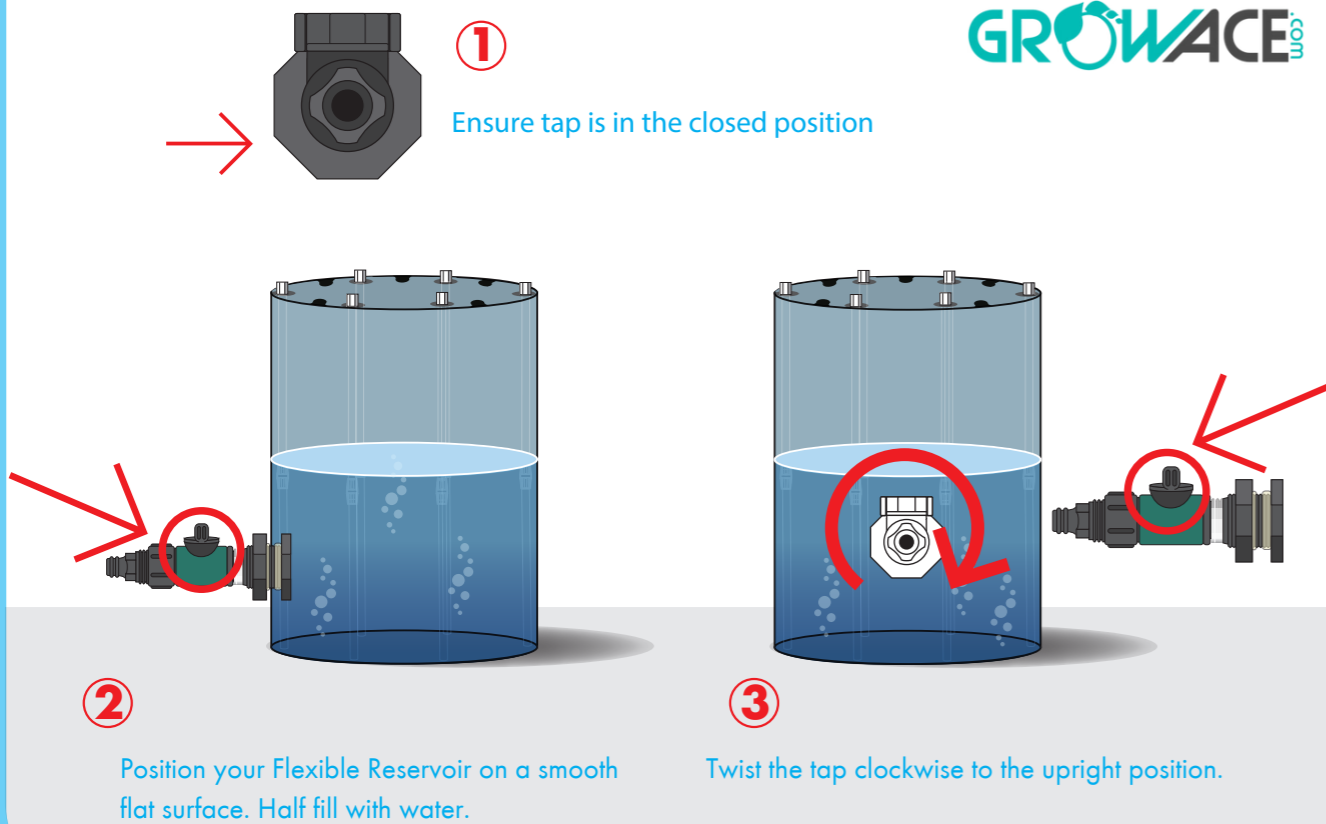
**Step 4**



Fit remaining support poles as shown in previous steps, fitting opposites.

**Step 5**

DISTRIBUTED BY  
**GROWACE** CO.



1 Ensure tap is in the closed position

2 Position your Flexible Reservoir on a smooth flat surface. Half fill with water.

3 Twist the tap clockwise to the upright position.



**Ultra Heavy-Duty Collapsible Reservoir**

**60 Gallon** (225 Liter)    **105 Gallon** (400 Liter)

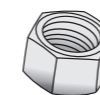
**Assembly Instructions**

**Parts List**

Reservoir x1



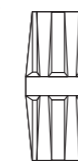
Pole Locking Nut x 6



Pole x 12

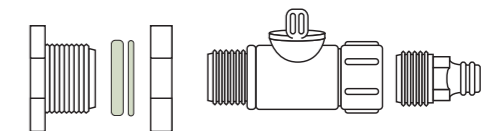


Pole Connector x 6



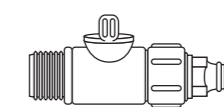
Outlet Tap x1

Includes: 1x reservoir connector (1x connector, 1x thick washer, 1x thin washer, 1x nut), 1x valve assembly, 1x nozzle

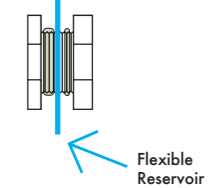


**Assembly Steps**

Step 1

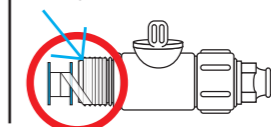


Step 2

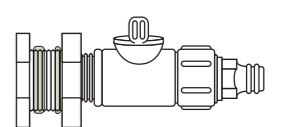


Teflon (5 wraps)

Step 3

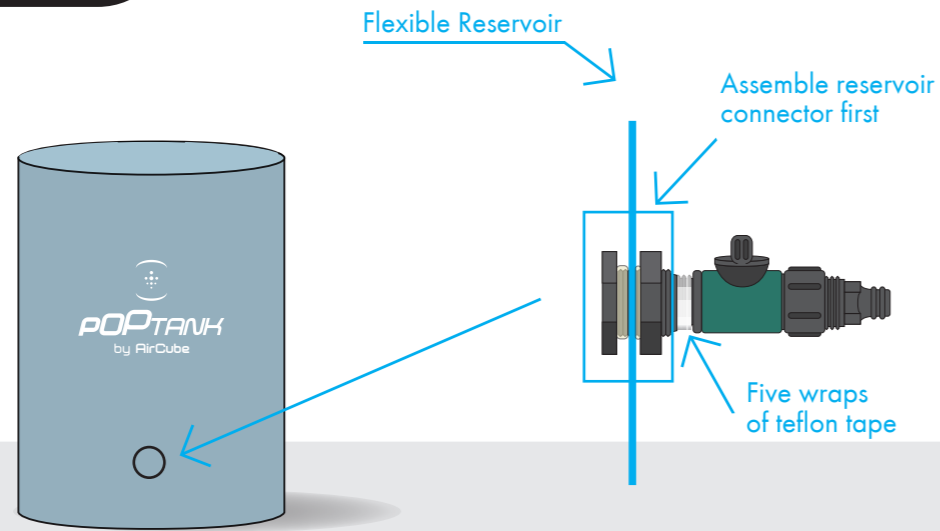


Step 4



Flexible Reservoir

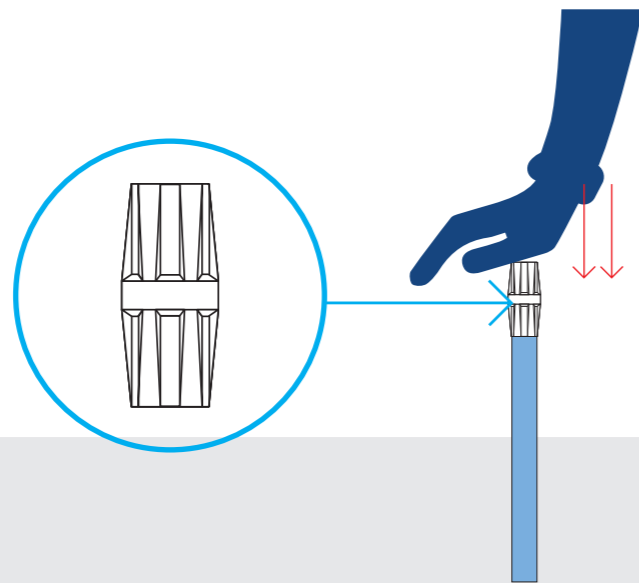
**Step 1**



**Fitting Outlet Tap**

Attach the nozzle to the valve assembly. Attach the reservoir connector to the reservoir, with the thick washer on the inside of the reservoir and the thin washer on the outside of the reservoir. Connect the valve assembly to the reservoir connector, ensuring the connection point has 5 wraps of teflon tape.

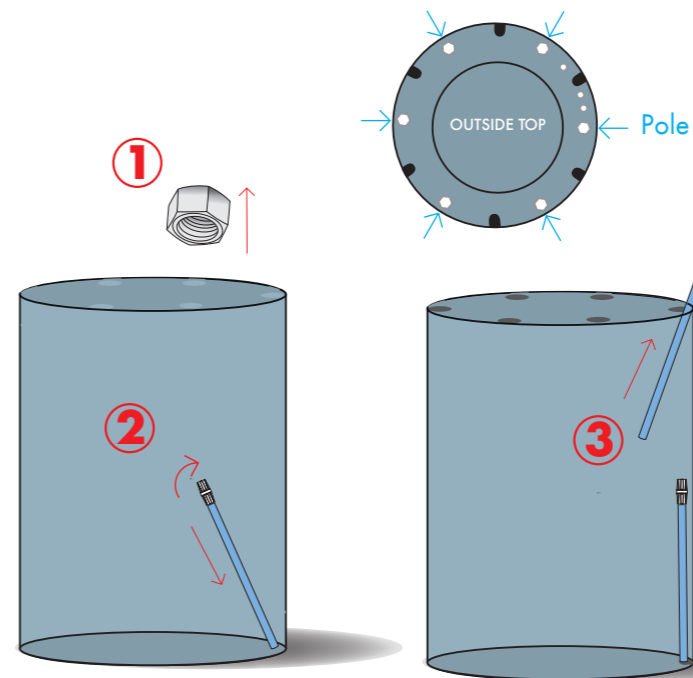
**Step 2**



**Fitting Connectors**

Fit connector to six of the support poles. Ensure pole is fully inserted into connector by exerting pressure from above.

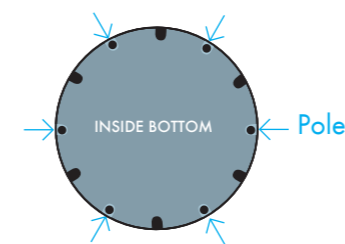
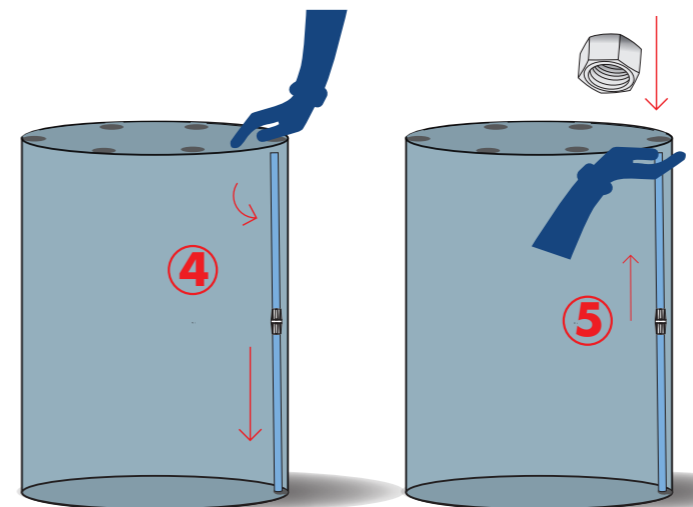
**Step 3**



**Fitting First Support Pole**

Accessing tank through top zipper.

- 1 Remove pole locking nuts from outside top.
- 2 Push lower part of support pole into bottom location feature and straighten.
- 3 Slot upper support pole through hole in upper ring.
- 4 Straighten top support pole and fit into connector. Ensure pole is fully inserted into connector by exerting pressure from above.
- 5 While applying pressure to the underside of top ring, screw on pole locking nut.



**Safety**



Never drag or move the Flexible Reservoir when full of water. The Flexible Reservoir should be completely drained before it is moved.