

# BIO SCULPTURE

HEALTHY | ETHICAL | PROFESSIONAL



PROFESSIONAL TRAINING  
PROSPECTUS



## WELCOME TO BIO SCULPTURE

Since childhood, Elmien was fascinated by beautiful nails. This fascination became her passion. After completing her studies at the CIDESCO Beauty Academy, Elmien opened her first salon. Unable to find any premium quality nail care products, she continued her studies in the USA attending training in artificial nail systems. Elmien concluded that if she wanted a product to meet all the requirements it would have to be developed from the ground up.

Her goal was not only set on beautiful nails, but also on nail health. By consulting with the best scientists in their respective fields and applying the latest technologies available, BIO SCULPTURE Gel was born from a humble beginning with passion, hard work and the faith of a true pioneer.

Today the BIO SCULPTURE head office is situated in the heart of South Africa in the small town of Clocolan, playing an important role in the socio-economic environment, surrounded by the breathtaking African landscape. The 3000sqm ultra-modern factory is an environmentally friendly building with regulated ventilation systems, boasts self-supportive water storage, solar panels and optimises natural lighting. The factory is ISO 22716 certified for Good Manufacturing Practices and is managed under ISO 9001 Quality Management Systems.

The warm-heartedness of BIO SCULPTURE is not only tangible in the factory, but is extended to the global BIO SCULPTURE family.



*"Your hands are your calling card in life.  
Your nails their focal point."*

Founder of BIO SCULPTURE

HEALTHY | ETHICAL | PROFESSIONAL

Our purpose is to provide quality products and professional training, empowering nail technicians to offer healthy and fashionable nail care systems, guided by an ethical business approach.



BIO GEL evō BI-OLYGEL ETHOS GEMINI SPA

# BIOGEL

---

BIOGEL is the original, professional, soak-off, easy wear nail gel system in a jar. With a 5-star Safety Rating boasting natural nail health, while beautifully enhancing and transforming any nail. A scientifically formulated pure gel range which varies from flexible to solid, BIOGEL is suitable for every nail type and is excellent for extending & strengthening nails. BIOGEL is durable, chip resistant, self levelling, with a long-lasting gloss finish, and removes within 10 to 15 min. With a range exceeding 200 colours, nail art and overlay possibilities are endless. New fashionable colours are launched seasonally, adding to the BIOGEL range with a matching nail polish range.

# evo

---

EVO is a revolutionary, professional LED gel polish in a bottle system that is easy to apply. Consisting of three pure gel base coats: EVO 80 Base & Build, EVO FLEX Base and EVO CONTOUR Base & Build, each with a unique texture and purpose to suit every nail type. The bases have excellent self levelling properties for overlays, adding strength to the natural nail and to create effortlessly beautiful form sculptures. The bottle and brush system allow for fast application and quick removal within 10 to 15 min, while being a complete system on its own, EVO is compatible with BIOGEL. EVO has a wide selection of highly pigmented colour gels with excellent consistency and intense nail coverage that are all named after special ladies. Colour palettes are compiled together by leading fashion experts, adding new, seasonal and trendy colours as well a everyday wear shades to the EVO family.

# ETHOS

---

ETHOS is the Nail Care range for natural nails by BIO SCULPTURE, pledged to Nail HEALTH. The unique property of the key natural ingredient in each individual treatment is discretely displayed on its bottle. Ideal for professional salon use and home care. Each product in this range has a unique scent, colour and formulation used to support, soothe, moisturise or strengthen your natural nails.

# GEMINI

---

GEMINI-representing "twins" is BIO SCULPTURE's Nourishing Nail Polish with matching BIOGEL colours. 14ml of GEMINI colour is beautifully displayed in the recognisable square bottle. GEMINI contains hardening plant extract agents derived from Aloe Vera, Lemon and Ginseng. It is fast drying, long lasting and will add strength to the nail. GEMINI offers a UV filter and is Styrene Free. GEMINI's brush ensures an even application, consistent coverage, precise product control and enhanced colour during application.

# BI-OLYGEL

---

BI-OLYGEL is a UV LED gel, strengthened with acrylic paste to bring out the best properties of both gel and acrylic systems, creating a firm hard gel that is easy and quick to apply. The gel has a paste-like texture, applied in an acrylic style over a BIOGEL or EVO base layer with a patting and smoothing motion. Cured in 60 seconds under a UV LED unit. 4 colour variants are available: Glow, Blonde, Ice and Frost.

# SPA

---

Inspired by nature, BIO SCULPTURE's tranquil SPA treatment range can be used in salons, spa's or at home. Our SPA range is specially blended and formulated to exfoliate, hydrate, protect and soften the skin and cuticles. Our products are infused with essential oils to rejuvenate the health and beauty of skin and nails.





# CAREER TRAINING

BIO SCULPTURE's professional products are available to nail technicians through brand training. As a training-based system, BIO SCULPTURE endorses the highest standard globally and produces award winning nail technicians worldwide. BIO SCULPTURE certified training courses are internationally recognised within our brand systems.



**Full Career Training**  
5 Days



**Conversion Training**  
4 Days



**BI-OLYGEL Training**  
1 Day



**Full Cover Tip Training**  
1 Day



**Summer Heel Training**  
1 Day



**Nail Art Training**  
1 Day

# BENEFITS OF BIO SCULPTURE TRAINING



Access to professional products



Earn a potential extra income



Pursue your passion



Develop new skills



Ongoing training and support



Work your own hours



Training centres across SA



Career preparation

On completion of the training, the newly trained technician will be able to attend as many refresher workshops as needed throughout their career. T's & C's apply.

Once you have completed and passed a practical exam, you will be awarded the respective BIO SCULPTURE certificates.

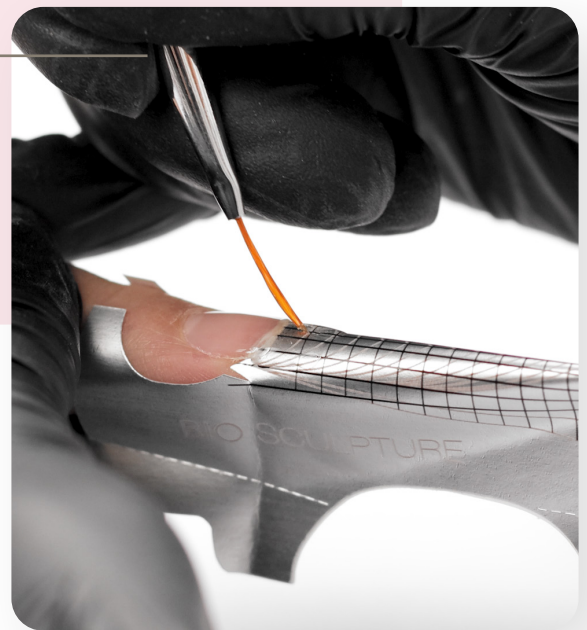
# FULL CAREER TRAINING

---

Career Training is a 5-day course structured for both experienced and new nail technicians, who desire becoming a professional BIO SCULPTURE nail technician. Training modules offer each nail technician comprehensive training in natural nail care treatments as well as Spa product knowledge, BIOGEL and EVO product application, nail extensions, full cover tips and product removal.

## WHAT YOU WILL LEARN

- Nail anatomy & terminology
- Nail diseases and disorders
- Nail plate preparation
- Introduction to Spa manicures
- BIOGEL & EVO applications – Clear, Colour & French Gel Overlays
- Silk repairs
- BIOGEL & EVO lengthening techniques including Sculptures & Full Cover Tip application
- Fills
- Gel removal
- Hygiene & maintenance
- Salon ethics



Individual training for BIOGEL or EVO systems are available on request

**Duration: 5 Days**

**Training Kit + Training Fee = R11,100**

*(Training Kit includes an ULTRA Curing Lamp and 4.5g Conditioning Gel)*

# TRAINING KIT

---

- Carry Bag
- Home Care Bag
- BIOGEL Technician Manual
- EVO Technician Manual
- Spa Training Manual
- Client Card Booklet
- BI-OLYGEL Brochure
- BIOGEL Brochure
- EVO Brochure
- Ultra Curing Lamp
- LED Adaptor
- Technician Badge
- Catalogue
- Colour Booklet

## BIOGEL

- 4.5g Base Gel
- 4.5g Soft Gel
- 4.5g Apex Gel
- 4.5g Free Edge Gel
- 4.5g Gloss Gel
- 4.5g Gel No. 1 French White
- 4.5g Gel No. 30 Triginta

## EVO

- EVO 80 Base & Build
- EVO Flex Base
- EVO Contour Base & Build
- EVO Gloss Top Coat
- EVO Gel 121 Stella

## ETHOS & GEMINI

- 14ml ETHOS Cuticle Remover
- 14ml ETHOS Almond Oil
- 14ml ETHOS Vitamin Dose
- 14ml ETHOS SPS
- 14ml ETHOS Lavender Base
- 14ml ETHOS Mirror Top Coat
- 14ml GEMINI Polish No. 30 Triginta

## SPA

- 250ml (180g) Potpourri Aqua Soak
- 75ml Apricot Kernel Scrub
- 75ml Mint Mask
- 75ml Hand & Body Butter
- Spa Spatula

## SOLVENTS

- 200ml Cleanser & S/Pump
- 200ml Gel Remover (Spout)
- 200ml Surface Cleaner & S/Pump
- 50ml Hygiene Prep & S/Pump
- BIO SCULPTURE Remover Sachets x5

## SOFTS

- Nail Wipes Set (X50)
- Wonder Wipe (X1 Roll)
- Cotton Wipes (X200)
- Silk Strip (Piece)
- Advanced Nail Forms (50)

## BUFFS & FILES

- Thin Black File (150/200 Grit) X6

- Multi-File Handle X2
- Orange Patch (100 Grit) X1
- Grey Patch (220 Grit) X1
- Black File Patch (180 Grit) X1
- Blue File Patch (100 Grit) X1
- Gold File (100/100 Grit) X1

## UTENSILS

- Metal Tool Large
- Side Blade Cutter
- Metal Pick
- Bio Tweezers
- Gel Brush Holder
- Large Metal Stirrer
- Straight Blade Silver Stork Scissors
- Finger Rest
- Full Cover Tips (Almond Medium)
- Flashlight
- Dampen Dish

## BRUSHES

- Upper Arch Brush
- Gel Brush #6 Round
- Gel Brush #4 Flat
- Gel Brush #4 French
- Nail Brush
- Mask Brush



# CONVERSION TRAINING

---

Conversion Training is 4 days with the 5th day optional and offered at no additional cost. The course is structured for an experienced nail technician who desires brand training to use and purchase professional BIO SCULPTURE gel products. Training modules offer each nail technician comprehensive training in natural nail care treatments as well as Spa product knowledge, BIOGEL and EVO product application, nail extensions, full cover tips and product removal.

## WHAT YOU WILL LEARN

- Nail anatomy & terminology
- Nail diseases and disorders
- Nail plate preparation
- BIOGEL & EVO applications – Clear, Colour & French Gel Overlays
- Silk repairs
- BIOGEL & EVO lengthening techniques including Sculptures & Full Cover Tip application
- Fills
- Gel removal
- Hygiene & maintenance
- Salon ethics



Duration: 4 Days

Training Fee = R2,000 (excluding training kit)

Customisable kit available, based on the nail technicians individual product requirements.



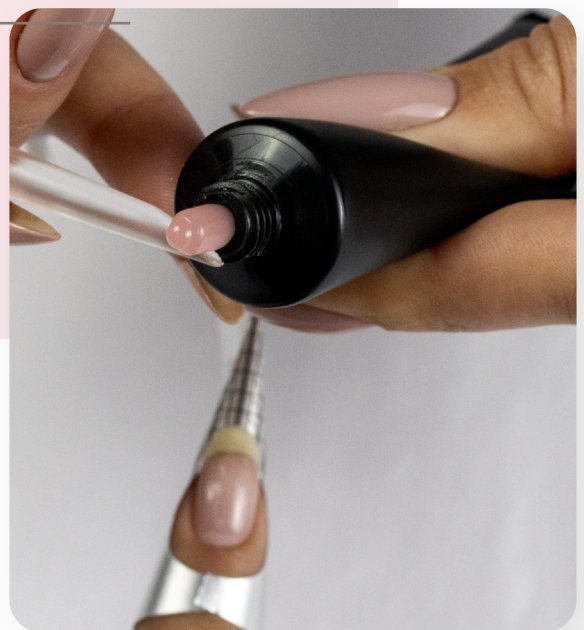
# BI-OLYGEL

---

BI-OLYGEL Training is a 1-day course structured for BIO SCULPTURE trained technicians and experienced nail technicians in a similar product training background. Technicians will receive comprehensive training in natural nail care, treatments, BI-OLYGEL product application, form sculptures, moulded sculptures and product removal.

## WHAT YOU WILL LEARN

- Product knowledge
- Nail terminology
- Nail plate preparation
- Nail shaping & evaluation
- Base layer application
- BI-OLYGEL overlay
- BI-OLYGEL french overlay
- BI-OLYGEL form sculpture
- BI-OLYGEL moulded sculpture
- Basic BI-OLYGEL nail art
- BI-OLYGEL removal



Duration: 1 Day

Price: Training Kit + Training Fee = R2,200

# FULL COVER TIPS

---

The BIO SCULPTURE Full Cover Tip is a quick and easy application, instantly creating perfect shape and length.

The BIO SCULPTURE glueless tip application is a breakthrough application technique that allows for a perfect tip application without using any glue or harmful ingredients that may cause damage to the natural nail. The glueless tip application done with Base gels from the BIOGEL & EVO range, can last for weeks and gives the client the freedom of choosing any nail shape(s) and length, regardless of the length of their own nail.

Never before has achieving instantly perfect length and shape been so easy.

## WHAT YOU WILL LEARN

- Product knowledge
- Nail terminology
- Nail plate preparation
- Base layer application
- Full Cover Tip application
- Full Cover Tip shaping & evaluation
- Colour overlay
- Removal
- Fill



In class, hands on professional training by a highly skilled educator = R500  
(Including free access to the online training)  
Technician to purchase a Full Cover Tip Box and LED Flashlight, needed for training (3AAA batteries not included)

# SUMMER HEEL

BIO SCULPTURE Summer Heel is a safe, quick and easy callus removal treatment. Visible results within minutes, achieved by using products suitable for both salon and home use.

## WHAT YOU WILL LEARN

- BIO SCULPTURE Summer Heel, SPA and ETHOS product knowledge
- Nail terminology
- Nail plate preparation
- How to use BIO SCULPTURE Summer Heel
- BIO SCULPTURE Summer Heel pedicure options
- After care and retail



In class, hands on professional training = R1555  
(Including free access to online training)

Training fee includes a BIO SCULPTURE Summer Heel Professional Kit & Summer Heel Manual

# NAIL ART TRAINING

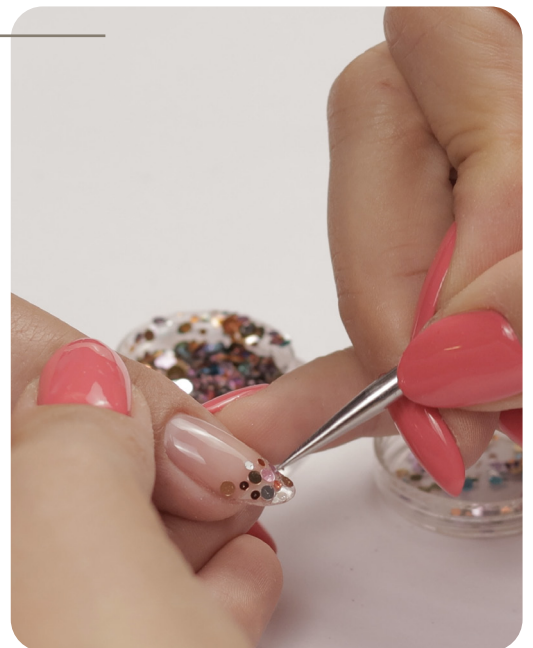
---

Nail Art is continuously evolving and becoming increasingly popular in the nail industry. Nail Art is an artistic and uniquely creative way to paint, gel, build, enhance, embellish, and decorate nails. Learn how to use BIO SCULPTURE's wide range of nail art products in this 1 day nail art training designed to help you master nail art designs and techniques starting from basic to advanced.



## WHAT YOU WILL LEARN

- What is nail art?
- Types of nail art
- What influences nail art choices?
- Nail art product knowledge
- Understanding colour
- Basic nail art
- Intermediate - Advanced nail art



Duration: 1 day. Contact your educator for more information

Price: In class, hands on professional training = R600

(Includes training, a BIO SCULPTURE Nail Art Manual and free access to online training)



# ONLINE TRAINING

---

Our online training courses can help you master Summer Heel, Full Cover Tips, Nail Art or BI-OLYGEL. To enrol into one of our online courses you must first purchase the relevant products from your distributor.

## AVAILABLE ONLINE COURSES



**BI-OLYGEL Training**



**Full Cover Tip Training**



**Summer Heel Training**



**Nail Art Training**

### HOW TO GAIN ACCESS TO ONLINE TRAINING

1. Purchase products and attend in class training where required
2. Register profile at: [www.biosculpture.com/register/](http://www.biosculpture.com/register/)
3. Request enrolment with your Educator
4. A confirmation email will be sent to you when you are enrolled
5. Complete the course
6. Success!



For more information, visit: [www.biosculpture.com](http://www.biosculpture.com)

The courses available are complimentary to the in-class training available at your nearest training centre.



# LEARN MORE ABOUT BECOMING A BIO SCULPTURE QUALIFIED NAIL TECHNICIAN



**EASTERN FREE STATE**

niins@niins.co.za  
082 452 4365  
058 303 8972

**EASTERN CAPE - COASTAL REGION**

biosculpturepe@absamail.co.za  
082 415 3657  
041 368 6851

**EASTERN CAPE - INLAND**

biosculpture@axess.co.za  
084 402 5825  
042 243 2885

**FREE STATE & NORTHERN CAPE**

ilse@biogelbloem.co.za  
051 430 2769

**GAUTENG - CENTURION**

admin@bio-sculpture.co.za  
060 617 5819  
012 644 2401

**GAUTENG - EAST RAND**

marina@bio-sculpture.co.za  
sune@bio-sculpture.co.za  
082 277 9268  
083 299 5539

**GAUTENG - PRETORIA**

biosculpturepta@vodamail.co.za  
072 242 7218  
012 346 7559

**GAUTENG - WEST RAND**

biosculpwstrand@iafrica.com  
060 668 4657  
011 766 1396

**KLERKSDORP**

biosculpture@angelskld.co.za  
083 749 3493

**KZN**

biogelnatal@mweb.co.za  
072 702 2874  
031 764 2780

**KZN - MIDLANDS**

bron@biosculpturemidlands.co.za  
071 895 9708  
033 347 5024

**LESOTHO**

ilse@biogelbloem.co.za  
051 430 2769

**LICHTENBURG**

biancageldenhuis3@gmail.com  
079 495 2175

**LIMPOPO NORTH**

michellelouwies1@gmail.com  
072 524 4079

**LIMPOPO SOUTH**

xandriabloem@gmail.com  
082 293 6206

**NAMIBIA**

info@biosculpturenamibia.com  
+264 61 30 6448  
+264 81 140 0101

**NELSPRUIT**

info@biosculpnsp.co.za  
060 878 3365

**POTCHEFSTROOM**

shortcourses@saahst.co.za  
018 293 1049

**RUSTENBURG**

hattinghchantell@gmail.com  
072 044 7177

**WESTERN CAPE**

info@biogelwc.co.za  
060 575 1775  
021 886 8786/88



# BIO SCULPTURE