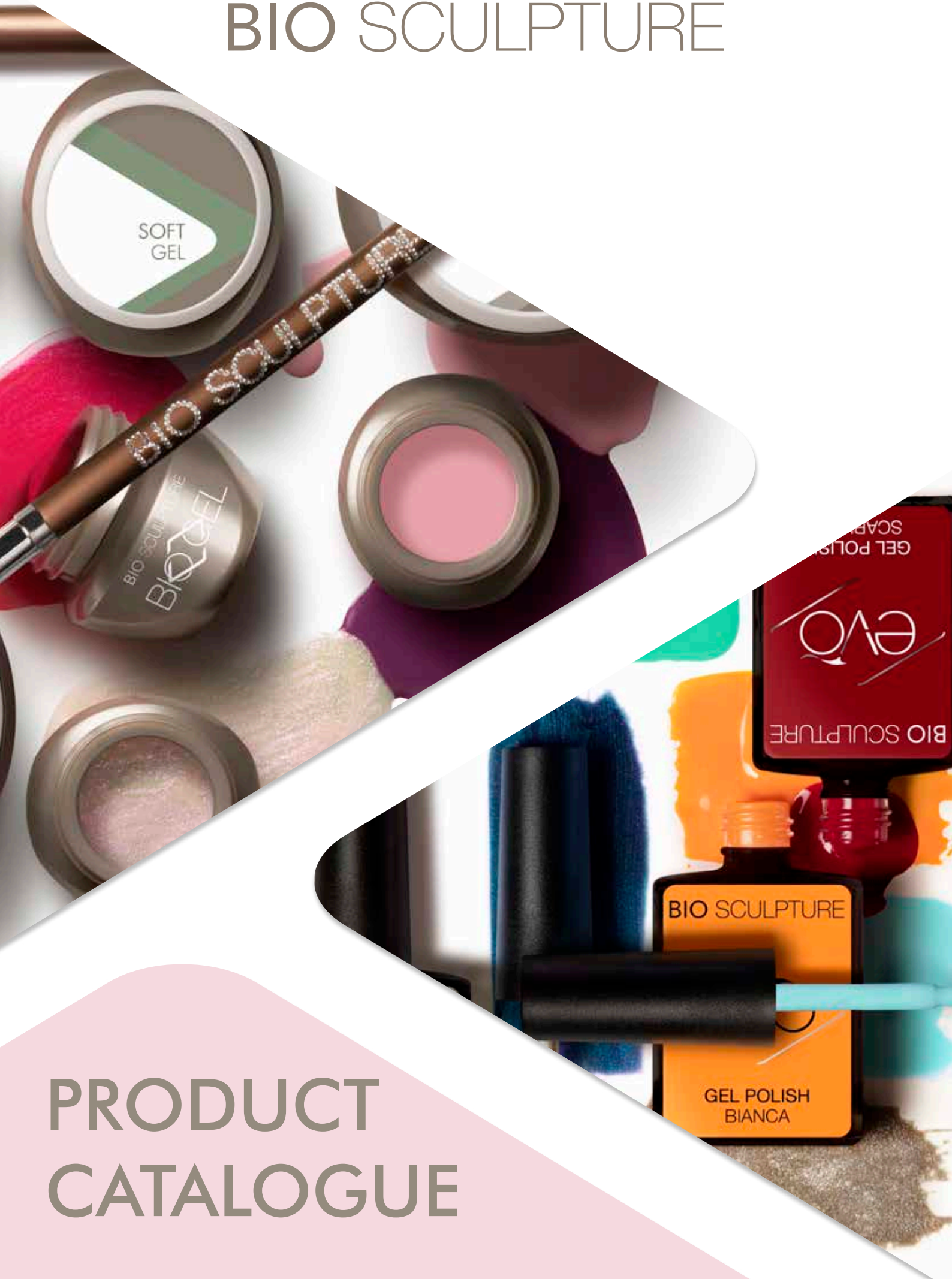


BIO SCULPTURE



PRODUCT CATALOGUE

HEALTHY | ETHICAL | PROFESSIONAL

Our purpose is to provide quality products and professional training, empowering nail technicians to offer healthy and fashionable nail care systems, guided by an ethical business approach.



BIOGEL evō ETHOS GEMINI BI-OLYGEL

Tel: (+27)51 943 0377 | Email: online@biosculpture.com | URL: www.biosculpture.com |

Physical Address: No. 8 Industria Road, Clocolan, Free State 9735, South Africa |

Facebook: [@BioSculptureOfficial](https://www.facebook.com/BioSculptureOfficial) | Instagram: [@bio_sculpture_sa](https://www.instagram.com/bio_sculpture_sa) | Youtube: Bio Sculpture

INDEX

BIOGEL .04



EVO .06



BI-OLYGEL .09



NAIL ART .10



GEMINI .08



ETHOS .14



CARMEN .13



SPA .16



KITS .18



MANUALS .20



SOLUTIONS .21



SOFTS .25



BUFFS & FILES .27



UTENSILS .22



RETAIL STANDS .33



BRUSHES .29



PROMOTIONAL MATERIAL .33



CURING UNITS .31



TIPS & ADHESIVES .32



BAGS .35



BIOGEL

BIOGEL is the original, professional, soak-off, easy wear nail gel system in a jar. With a 5-star Safety Rating boasting natural nail health, while beautifully enhancing and transforming any nail. A scientifically formulated pure gel range which varies from flexible to solid, BIOGEL is suitable for every nail type and is excellent for extending & strengthening nails.

TREATMENT GELS



4.5g



10g



25g



Base Gel

Base & Build

4,5g Item Code: 09_4

10g Item Code: 09_10

25g Item Code: 09_25



UV Sculpting Gel

Base & Build

4,5g Item Code: 02_4

10g Item Code: 02_10

25g Item Code: 02_25

- Suitable for most nail types
- Original Base Gel
- 5 star rating
- Self-levelling
- Strengthening layer after colour for extra strength
- Silk Sculptures
- Easy soak off

- Suitable for damaged, thin and corrugated nails
- 1 min Spectra curing
- Self-levelling
- Silk Sculptures
- Easy soak off



Soft Gel

Base & Build

4,5g Item Code: 12_4
10g Item Code: 12_10
25g Item Code: 12_25

- Suitable for soft, flexible nails
- Adds strength to soft, flexible nails
- Self-levelling
- Strengthening layer after colour for extra strength
- Excellent for embedding nail art
- Silk Sculptures
- Easy soak off



Gloss Gel

4,5g Item Code: 13_4
10g Item Code: 13_10
25g Item Code: 13_25

- High Gloss finish
- Scratch resistant
- Seals in colour
- Beautiful overlay for weeks



Free Edge Gel

4,5g Item Code: 14_4
10g Item Code: 14_10
25g Item Code: 14_25

- Used to lengthen free edge of a sculpture
- Natural free edge nail colour
- Extremely firm + sturdy

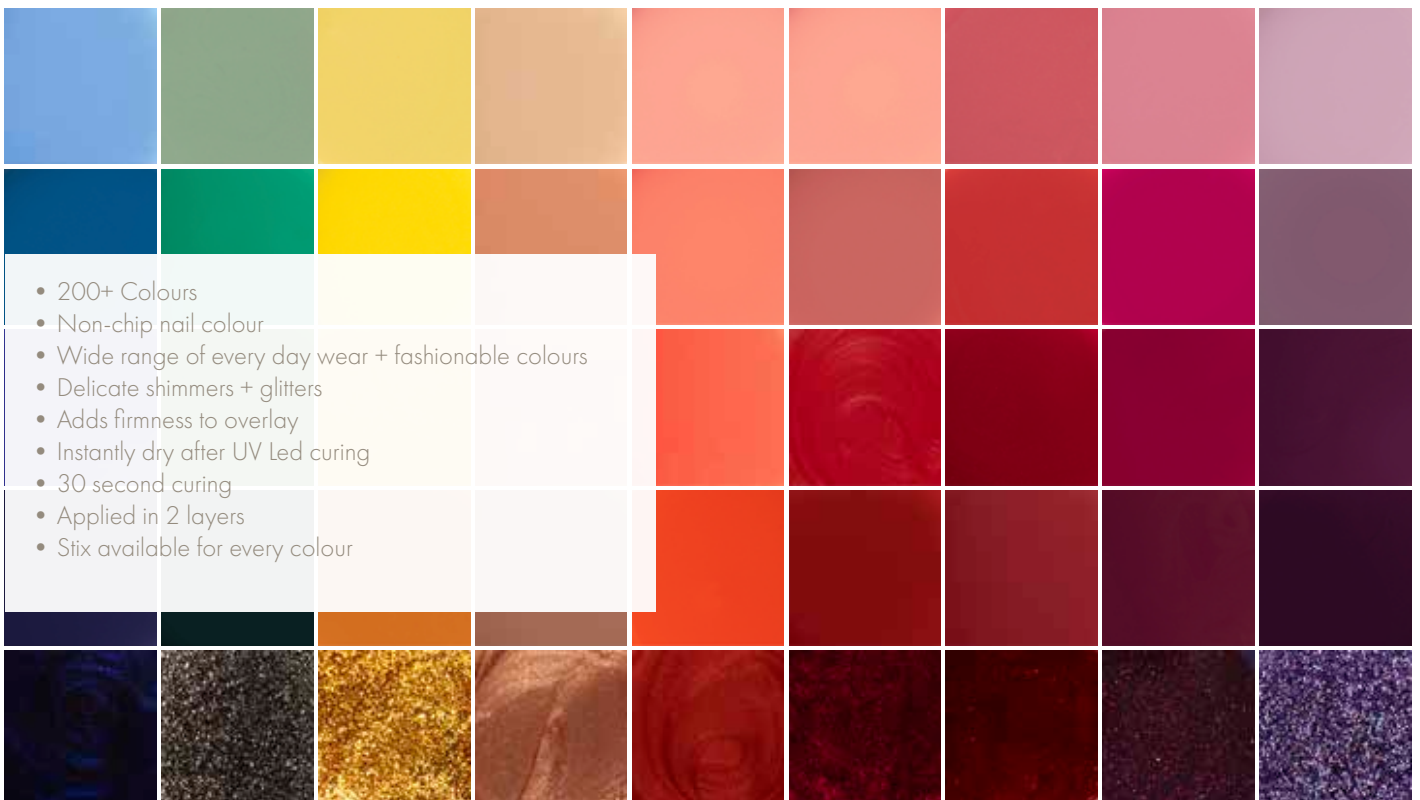


Pink Paste

4,5g Item Code: 15_4

- Used as a concealer
- Illusion of an extended nail plate
- Applied with a puffer

BIOGEL COLOUR GEL RANGE





EVO gel polish is quick and easy to apply. With excellent adhesive properties, EVO is an extremely durable, long-lasting, high shine gel overlay. This Gel Polish system in a bottle consists of pure Gel Bases, Colours and Top Coats.



Flex

Base

- Ideal for soft, thin, brittle nails
- Extreme flexibility
- Flexible overlay support

14ml Item Code: EFLEX



Oxygenating

Base & Build

- Medical grade formulation
- Permeable base layer
- Infused with vitamin A & E
- Builds a strong upper arch
- Form & silk sculptures
- Glueless tips

14ml Item Code: EBASEOXY



Contour

Base & Build

- Ideal for normal to strong nails
- Durable and solid
- Strong support for long nails
- Contour a perfect arch
- Form & silk sculptures

14ml Item Code: ECONTOUR



Chrome Catalyst

Catalyst

- Applied before a chrome powder
- Long lasting chrome effect

12ml Item Code: E062



Suede Matte

Top Coat

- Soft touch velvet finish
- Long lasting matte effect
- Non-wipe top coat

14ml Item Code: ETOPSUEDE



Natural White

Free Edge Gel

- Firm natural white builder gel
- Lengthen the free edge of the nail

12ml Item Code: E003



Gloss

Top Coat

- Long lasting high shine
- Plumping effect
- Leaving the overlay looking beautiful for weeks

14ml Item Code: ETOPGLOSS



EVO GEL COLOUR RANGE



GEMINI

GEMINI -representing "twins"- is Bio Sculpture's Nourishing Nail Polish which matches BIOGEL colours. 14ml of GEMINI colour is brilliantly displayed in the recognisable square bottle.

GEMINI contains hardening plant extract agents derived from Aloe Vera, Lemon and Ginseng. It is fast drying, long lasting and will add strength to the nail. Gemini has a UV filter and is Styrene Free.



BI-OLYGEL

BI-OLYGEL is a UV gel, strengthened with acrylic paste to bring out the best properties of both gel and acrylic systems, creating a firm hard gel in a 30g tube, that is easy and quick to apply.



Ice

30g Item Code: 200BG001

Clear Gel that can be used to create glass-like sculptures



Frost

30g Item Code: 200BG002

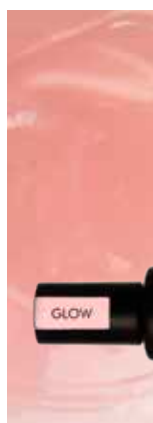
White Gel that can be used to create a French free-edge or 3D nail art



Blonde

30g Item Code: 200BG003

Soft nude shade Gel



Glow

30g Item Code: 200BG004

Sheer pink Gel that brings a healthy glow to nails



Blush

30g Item Code: 200BG005

Lovely soft natural pink Gel



NAIL ART



White Screed

A sturdy white builder gel used to extend a solid white free edge and create top surface nail art designs.

Art Gel 10g Item Code: 15_10

Art Gel 25g Item Code: 15_25



Liquid Glass

High viscosity nail art gel used to sculpt 3D nail art designs. Liquid Glass may be used to create clear images or it can be used in conjunction with Bio Sculpture's High Pigment Gels to build colourful nail art masterpieces.

7g Art Gel Item Code: 200STLG

THREADING GEL

A high viscosity gel with tangy threading properties used to create effortlessly beautiful nail art.

Black

Threading Gel 4,5g Item Code: 19_4



White

Threading Gel 4,5g Item Code: 18_4



Gold

Threading Gel 4,5g Item Code: 20_4



Silver

Threading Gel 4,5g Item Code: 21_4



Red

Threading Gel 4,5g Item Code: 23_4



Blue

Threading Gel 4,5g Item Code: 22_4



Diamond Gems

Item Code: NART/1300



HP GEL

Highly pigmented gels, used by award winning nail technicians all over the world. HP gels are extremely easy to work with and allow for endless nail art creations

Pink

3g HP Art Gel Item Code: 200ST001



Purple

3g HP Art Gel Item Code: 200ST002



Navy Blue

3g HP Art Gel Item Code: 200ST003



Turquoise

3g HP Art Gel Item Code: 200ST004



Red

3g HP Art Gel Item Code: 200ST005



Yellow

3g HP Art Gel Item Code: 200ST008



Green

3g HP Art Gel Item Code: 200ST010



Black

3g HP Art Gel Item Code: 200ST011



White

3g HP Art Gel Item Code: 200ST012



Gold

3g HP Art Gel Item Code: 200ST013



Silver

3g HP Art Gel Item Code: 200ST014



NAIL ART KIT

BIO SCULPTURE's Nail Art Kit comes fully equipped with everything you need to start off your Nail Art Career. The kit consists of:

- 8 primary colour high pigmented gels, these HP gels are used by award winning nail technicians all over the world. HP gels are extremely easy to work with and allow for endless nail art creations
- 8 Stencils. Stencils are a quick and effective tool used to create effortlessly beautiful nail art, Stencils are only a 'puff' away from a perfect design
- 8 puffers. Puffers are used apply HP gels to the nail, create stencil designs and help achieve the perfect Ombre.
- 1 Metal plate used as a creative plate to mix and decant high pigment gels

Item Code: KIT/431



STENCILS



Festive Stencils

Stencils are a quick and effective tool used with HP gels to create effortlessly beautiful nail art, Stencils are only a 'puff' away from a perfect design.

Pack of 5 | Item Code: NART/941



Stencils French Circle

A French circle stencil pack used with HP gels to help create the perfect French smile line.

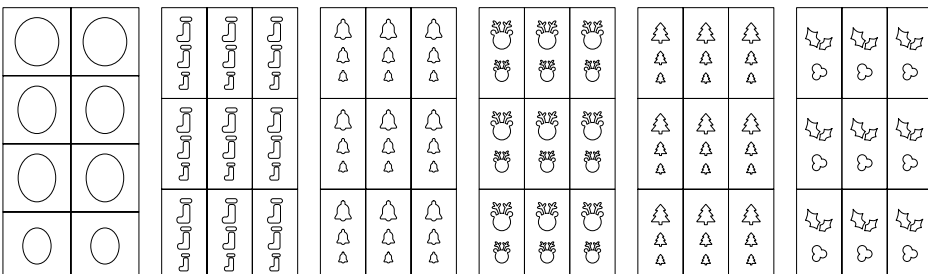
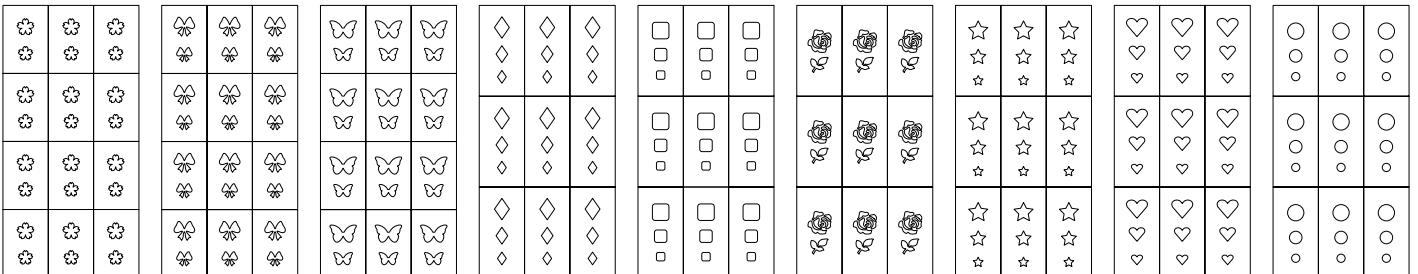
Pack of 4 | Item Code: NART/938



Shape Stencils

Stencils are a quick and effective tool used with HP gels to create effortlessly beautiful nail art, Stencils are only a 'puff' away from a perfect design.

Pack of 9 | Item Code: NART/940



CARMEN

Carmen perfume is youthful and light, with smooth warming elements carrying the fragrance of a sacred love that lingers. A refreshingly happy celebration of life!



100ml Carmen

100ml Item Code: 350/100



15ml Carmen

15ml Item Code: 350/14



Carmen Scent Stick

Pack of 50 | Item Code: PRO/1367



Carmen Stand

Item Code: STAND/CPS



celebrating life

ETHOS

ETHOS is the natural nail care range by BIO SCULPTURE, pledged to nail health. The unique property of the key natural ingredient in each individual treatment is discretely displayed on its bottle. Ideal for professional salon use and home care.



Almond Oil

- All nail types
- Infused with almond oil and extracts to combat dry nails and cuticles
- Contains almond, jojoba, avocado and vitamin E oils, to rehydrate nails and keep cuticles supple
- Apply to dry cuticles and massage well

14ml | Item Code: 302/14



Vitamin Dose

- All nail types
- A combination of vitamins to rejuvenate, moisturise and nourish nails
- Infused with ginseng root extract to sustain the keratin structure and cell metabolism of the nail
- Apply before gel application and during gel removal

14ml | Item Code: 303/14



Cuticle Remover

- All nail types
- Specially designed to soften hard, dry and stubborn cuticles during nail preparation
- Apply to cuticle area, leave on for two minutes then remove overgrown dead skin on nail plate
- Wash hands thoroughly after use

14ml | Item Code: 300/14



Kiwi Scrub

- Suitable for all nail types
- Contains passion fruit seed powder to exfoliate and rehydrate dry nails and cuticles
- Added Vit C and E, Ginseng root extract, sunflower oil and sweet almond oil to moisturise and hydrate nails
- Apply to nails and cuticles to revitalise after gel or polish removal
- Wash hands thoroughly after use
- Ideal for professionals and home care

14ml | Item Code: 318/14



Special Prep Solution

- Nails that tend to shed nail enhancements
- A Special Prep Solution
- Acid-free pre-gel treatment
- Increases product adhesion
- Maintains a healthy moisture balance
- Apply to the centre of each nail before gel application
- Professional use only

14ml | Item Code: 320/14



Volcanic Base

- Weak and brittle nails
- Enriched by volcanic stone extract to give strength to soft nails
- Rich in pistachio oil to help increase nail hardness as well as flexibility
- Apply a thin brush width to the centre of the nail before gel application or entire nail before nail polish

14ml | Item Code: 316/14



Lavender Base

- Revitalises and protects the natural nail
- Levels the nail surface
- Gives nails a natural and healthy appearance
- Builds a glossy and hard shield on nails
- Long lasting wear
- Soft pearl shimmer

14ml | Item Code: 304/14



Seaweed Calcium Base

- Hard, dry, brittle and ridged nails
- Red alga seaweed extract to help strengthen keratin structures, increasing flexibility and suppleness to brittle nails
- Silica and mica leaving a smooth nail surface on ridged nails
- Apply a thin brush width to the centre of the nail before gel application or entire nail before nail polish

14ml | Item Code: 317/14



Mirror Top Coat

- Smooth and silky nail polish finish
- Plumping effect that increases brilliancy of nail colour
- Resists scratching
- Long lasting, high gloss mirror-like shine

14ml | Item Code: 306/14



Oxycoat

- Vitamins and plant extracts that will nourish and hydrate nails
- Botanical extracts that will revitalise and brighten nails
- Bamboo isoflavones which have high antioxidant properties
- Permeable when used as a base for GEMINI colour and as a top coat

14ml | Item Code: 319/14

ETHOS 50ML REFILLS



Cuticle Remover

Item Code: 300/50



Vitamin Dose

Item Code: 303/50



Almond Oil

Item Code: 302/50

SPA

Inspired by nature, BIO SCULPTURE's tranquil SPA treatment range can be used in salon or at home. Specially blended and formulated to exfoliate, hydrate, protect, and soften the skin and cuticles. Delivering essential nutrients to rejuvenate the health and beauty of your skin and nails.



Potpourri Aqua Soak

Delightful, citrus scented bath and foot-spa soak that soothes and softens the skin.

180g Item Code: 501/250
540g Item Code: 501/750



Hand & Body Butter

A rich textured moisturiser for dry and dehydrated skin, leaving a healthy looking glow.

250ml Item Code: 505/250
750ml Item Code: 505/750



Apricot Kernel Scrub

Cream scrub for gentle exfoliation with natural apricot kernels and pumice.

100ml Item Code: 503/100
250ml Item Code: 503/250
750ml Item Code: 503/750



Potpourri Salt Scrub

- Exfoliating sea salt scrub with light botanical oils and real rose petals.
- Leaves skin silky smooth and heavenly scented.

250ml Item Code: 502/250
750ml Item Code: 502/750



Mint Mask

Moisturising mask that creates a lovely cooling effect, leaving skin feeling relaxed, nourished and rejuvenated.

100ml Item Code: 504/100
250ml Item Code: 504/250
750ml Item Code: 504/750



Heel Balm

A treatment which moisturises heel skin.

100ml Item Code: 510/100
250ml Item Code: 510/250
750ml Item Code: 510/750



Cuticle Cream

Enriched with essential oils for ultimate cuticle hydration.

20ml Item Code: 507/20



Hand Wash

Soft, refreshing silk-textured liquid soap with a beautiful geranium fragrance.

200ml Item Code: 509/200
1 l Item Code: 509/1L

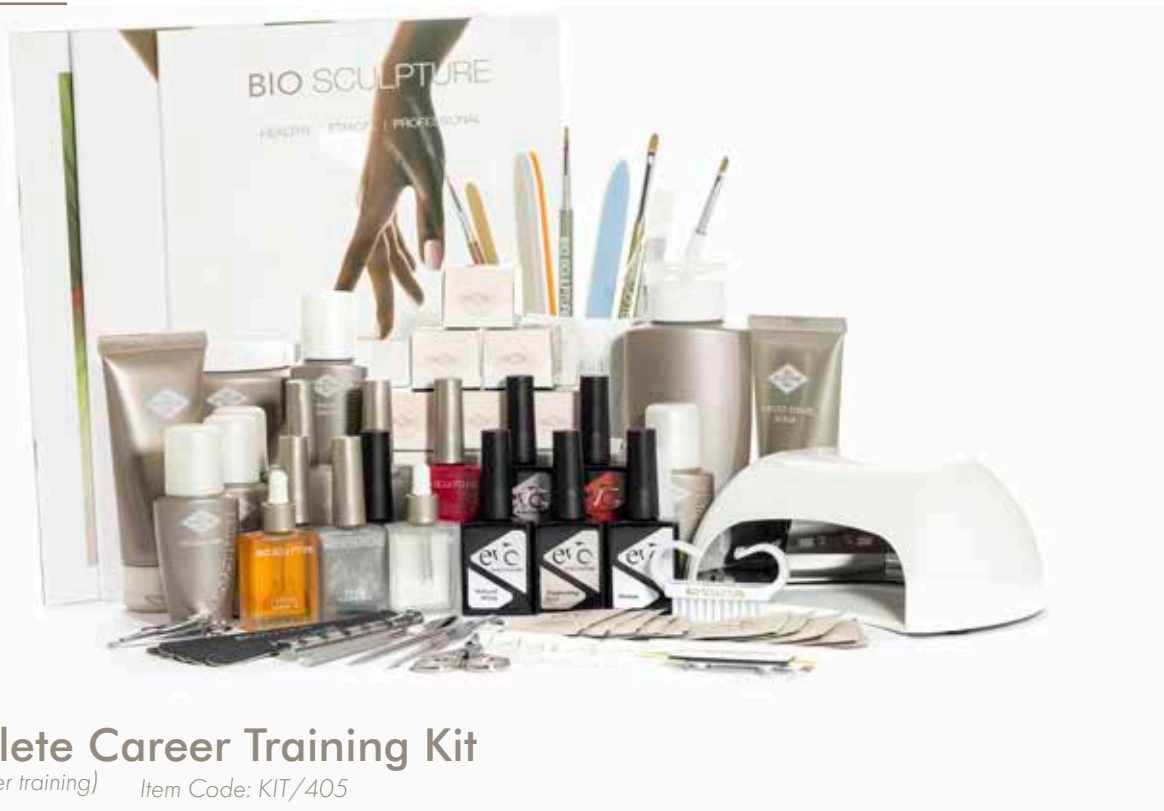


Hand & Body Lotion

Moisturises and nourishes, leaving skin smooth. Ideal as a home care product.

200ml Item Code: 508/200
1 l Item Code: 508/1L

KITS



Complete Career Training Kit

(5 day career training) Item Code: KIT/405

- Carry Bag
- Home Care Bag
- BIOGEL Manual
- EVO Manual
- Spa Training Manual
- Colour Booklet
- Catalogue
- Client Record Card
- BI-OLYGEL Brochure
- BIOGEL Brochure
- EVO Brochure
- V3 LED Unit
- LED Adaptor
- Technician Badge
- 4.5g BIOGEL Base Gel
- 4.5g BIOGEL Soft Gel
- 4.5g BIOGEL Hard Gel
- 4.5g BIOGEL Free Edge Gel
- 4.5g BIOGEL Gloss Gel
- 4.5g BIOGEL Gel No. 1 French White
- 4.5g BIOGEL Gel No. 30 Triginta
- 14ml ETHOS Oxycoat
- 14ml ETHOS Cuticle Remover
- 14ml ETHOS Almond Oil
- 14ml ETHOS Vitamin Dose
- 14ml ETHOS SPS
- 14ml ETHOS Mirror Top Coat
- 14ml GEMINI Polish No. 30
- GEMINI 5 Empty Collection Pack
- 200ml Cleanser (Menda Pump)
- 200ml Gel Remover (Spout)
- 200ml Surface Cleaner & S/Pump
- 50ml Hygiene Prep & S/Pump
- 250ml Potpourri Aqua Soak
- 100ml Apricot Kernel Scrub
- 100ml Mint Mask
- 250ml Hand & Body Butter
- Spa Spatula
- Thin Black File 150/200 Grit (6)
- Multi-File Handle (2)
- Orange Spear Patch (100/100)
- Grey Square Patch (220/220)
- Black File Patch (180)
- Blue File Patch (100)
- Gold File (100/100)
- Metal Tool Large
- Side Blade Cutter
- Metal Pick
- Bio Tweezers
- Gel Brush Holder
- Large Metal Stirrer
- Straight Blade Silver Stork Scissors
- Finger Rest
- Tip Box
- Nail Wipes
- Silk Strip
- Advanced Nail Forms (50)
- Upper Arch Brush
- Gel Brush #6 Round
- Gel Brush #4 Round
- Gel Brush #4 French
- Nail Brush
- Mask Brush
- 14ml EVO Oxygenating Base & Build
- 14ml EVO Flex Base
- 14ml EVO Contour Base & Build
- 14ml EVO Gloss Top Coat
- 12ml EVO Gel No. 121 Stella
- 12ml EVO Gel No. 001 Whitney (W)
- BIO SCULPTURE Cleanser Sachets (5)
- BIO SCULPTURE Remover Sachets (5)

BI-OLYGEL Kit

Item Code: KIT/416



- 50ml BI-OLYGEL Slide Solution
- Silicon Tool
- Sculpture Mould (100)
- 30g BI-OLYGEL Blonde
- 30g BI-OLYGEL Frost
- 30g BI-OLYGEL Ice
- BI-OLYGEL Brush
- Clips (10)
- Purple Buff 80 Grit
- White Patch 80 Grit (2)
- Advanced Nail Forms (50)
- Dampen Dish
- Pedicure Bag
- BI-OLYGEL Technician Manual
- BI-OLYGEL Brochure



BIOGEL Training Kit

Item Code: KIT/404

- Carry Bag
- Home Care Bag
- BIOGEL Manual
- Client Record Card
- BI-OLYGEL Brochure
- BIOGEL Brochure
- EVO Brochure
- V3 LED Unit
- LED Adaptor
- Technician Badge
- 4.5g BIOGEL Base Gel
- 4.5g BIOGEL Soft Gel
- 4.5g BIOGEL Hard Gel
- 4.5g BIOGEL Free Edge Gel
- 4.5g BIOGEL Gloss Gel
- 4.5g Gel No. 1 French White
- 4.5g Gel No. 30 Triginta
- 14ml ETHOS Oxycoat
- 14ml ETHOS Cuticle Remover
- 14ml ETHOS Almond Oil
- 14ml ETHOS Vitamin Dose
- 14ml ETHOS SPS
- 14ml ETHOS Mirror Top Coat
- 14ml GEMINI Polish No. 30
- GEMINI 5 Empty Collection Pack
- 200ml Cleanser (Menda Pump)
- 200ml Gel Remover (Spout)
- 200ml Surface Cleaner & S/Pump
- 50ml Hygiene Prep & S/Pump
- Thin Black File 150/200 Grit (6)
- Multi-File Handle (2)
- Orange Spear Patch (100/100)
- Grey Square Patch (220/220)
- Black File Patch (180)
- Blue File Patch (100)
- Gold File (100/100)
- Metal Tool Large
- Side Blade Cutter
- Metal Pick
- Gel Brush Holder

- Large Metal Stirrer
- Straight Blade Silver Stork Scissors
- Tip Box
- Nail Wipes
- Silk Strip
- Advanced Nail Forms (50)
- Upper Arch Brush
- Gel Brush #6 Round
- Gel Brush #4 Round
- Gel Brush #4 French
- Nail Brush



Home Care Retail Pack

Item Code: KIT/401

- 14ml ETHOS Kiwi Scrub
- 14ml ETHOS Vitamin Dose
- 14ml ETHOS Lavender Base
- 14ml ETHOS Almond Oil
- Thin Black File
- BIO SCULPTURE Remover Sachets (12)



EVO Training Kit

Item Code: KIT/E/TRAIN

- Conversion Kit Bag
- Homecare Bag
- EVO Manual
- Client Record Card
- BI-OLYGEL Brochure
- BIOGEL Brochure
- EVO Brochure
- Catalogue
- Colour Booklet
- Technician Badge
- EVO LED Lamp In Box
- EVO Adaptor
- 14ml EVO Oxygenating Base & Build
- 14ml EVO Flex Base
- 14ml EVO Contour Base & Build
- 14ml EVO Gloss Top Coat
- 12ml EVO Gel No. 121 Stella
- 12ml EVO Gel No. 001 Whitney (W)
- 12ml EVO Natural White
- BIO SCULPTURE Cleanser Sachets (5)
- BIO SCULPTURE Remover Sachets (5)
- 14ml ETHOS Oxycoat
- 14ml ETHOS Cuticle Remover
- 14ml ETHOS Almond Oil
- 14ml ETHOS Vitamin Dose
- 14ml ETHOS SPS
- GEMINI 5 Empty Collection Pack
- 200ml Cleanser (Menda Pump)
- 200ml Gel Remover (Spout)
- 200ml Surface Cleaner & S/Pump
- 50ml Hygiene Prep & S/Pump
- Nail Wipes
- Silk Strip
- Advanced Nail Forms(50)
- Thin Black File 150/200 Grit(6)
- Multi-File Handle(2)

Tutorial video:

<https://youtu.be/fgxMH3kLT2c>

- Orange Spear Patch (100/100)
- Grey Square Patch (220/220)
- Black File Patch (180)
- Blue File Patch (100)
- Gold File (100/100)
- Metal Tool Large
- Side Blade Cutter
- Metal Pick
- Bio Tweezers
- Large Metal Stirrer
- Straight Blade Silver Stork Scissors
- Tip Box
- Gel Brush #6 Round
- Nail Brush
- EVO Nail Art Brush (In Bottle)
- EVO French Brush (In Bottle)

MANUALS

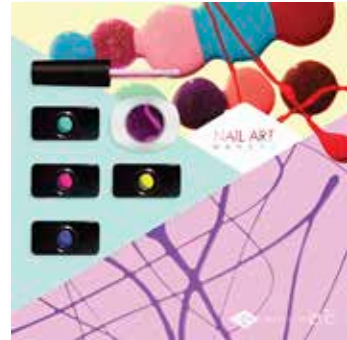
BIO SCULPTURE's professional gel products are available to nail technicians through brand training. As a training-based system, BIO SCULPTURE endorses the highest standard globally and produces award winning nail technicians worldwide.

There is a specialised manual for each and every one of our training modules. These manuals will assist you in becoming a certified BIO SCULPTURE technician.

Once you are a qualified BIO SCULPTURE nail technician make sure you have the latest manual and are up to date with the newest application methods.

Nail Art Manual

Item Code: MAN/1600



BIOGEL Technician Manual

Item Code: MAN/1603



EVO Technician Manual

Item Code: MAN/EVO



BI-OLYGEL Technician Manual

Item Code: MAN/1628



SPA Technician Manual

Item Code: MAN/1605



SOLVENTS

BIO SCULPURE has a range of specially designed solvents in convenient sizes. Tried and tested to compliment all of our product lines.



Quick Dry

Spray on nails after nail polish is applied to help nail polish manicure dry quickly.

50ml Item Code: 707/50
200ml Item Code: 707/200



Dilute

Dilutes dry, thickened nail polish.

50ml Item Code: 706/50



Techniclean

Waterless hand cleanser. Alcohol percentage of 55.05%.

100ml Item Code: 511/100



Hygiene Prep

Spray to sanitise files, utensils and clients nails. Used with nail plate separation or fungal infection.

50ml Item Code: 710/50
200ml Item Code: 710/200



Slide Solution

Slide Solution is a wetting solution, used to keep the BI-OLYGEL moist and easy to manipulate when shaping or building BI-OLYGEL overlays and sculptures.

50ml Item Code: 711/50
200ml Item Code: 711/200



Cleanser

Cleanser is formulated using active ingredients that help prevent dehydration of the nail and surrounding skin, with a soft pink tint for easy identification and a pomegranate and mint scent to enhance your treatment experience. Cleanser allows for quick nail polish removal as well as effortless cleansing during and after gel application.

200ml Item Code: 703/200
1 l Item Code: 703/1L



Gel Remover

Gel Remover is formulated using active ingredients that help prevent dehydration of the nail and surrounding skin. Specially designed to improve the gel removal process, with a soft green tint for easy identification and an Aloe Vera scent to enhance your treatment experience.

200ml Item Code: 705/200
1 l Item Code: 705/1L



Surface Cleaner

Registered as a BFR Biocidal. Alcohol percentage of 70.45%. Used in private, public and industrial areas to disinfect surfaces, materials, equipment and furniture.

200ml Item Code: 709/200
1 l Item Code: 709/1L

UTENSILS



Gel Brush Holder

Hold and organise gel brushes and utensils during treatments.

Item Code: UT/800



Metal Tool

Push back cuticles, prepare nail plate and remove excess gel during soak off process Available in small or large.

Large Metal Tool Item Code: UT/802/L

Small Metal Tool Item Code: UT/802/S



Cuti-Stone

Remove loose dead skin around cuticles and side walls during nail plate preparation.

Item Code: UT/803



Metal Stirrer

Stir, mix and fold BIOGEL colour gels.

Large Metal Stirrer Item Code: UT/809/L

Small Metal Stirrer Item Code: UT/809/S



Cuticle Nipper

Nip excess dead cuticles during nail plate preparation.

Item Code: UT/805



Sapphire Tool

Push back cuticles, file free edge of nails and remove dust from nail.

Item Code: UT/807



Straight Blade Silver Scissors

Long blade scissor used to cut silk and cut nail forms.

Item Code: UT/814/SB



Edge Cutter

Shorten free edge length on tips during preparation and gel removal.

Item Code: UT/811



Bio Tweezers

Assists in soak off process to pick up and place the cotton square soaked in Gel Remover onto clients nails to avoid over exposure to product. Shape and squeeze a perfect C-Curve when building Silk Sculptures.

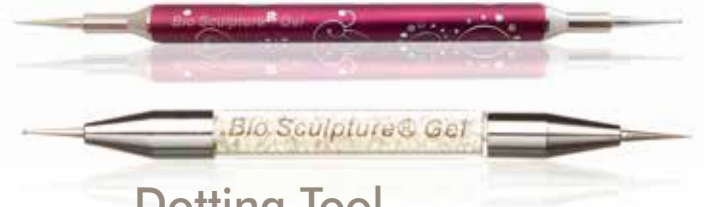
Item Code: UT/810



Silicone Tool

Specially designed tool used to create beautiful and effortless 3D BI-OLYGEL nail art.

Item Code: UT/NA492



Dotting Tool

Create various nail art techniques.

Purple Dotting Tool Item Code: UT/816/P

Crystal Dotting Tool Item Code: UT/816/C



Straight Blade Silver Stork Scissors

Long blade scissor used to cut silk and cut nail forms.

Item Code: UT/813/SB



Side Blade Cutter

Cut hang nails and loose skin during nail plate preparation

Item Code: UT/804



Large Nail Clipper

Shorten nail length

Item Code: UT/818



Finger Rest

Rest clients finger during Glueless Tip or detailed Nail Art application.

Item Code: UT/817



Dampen Dish

Hold BI-OLYGEL Slide Solution while working with BI-OLYGEL, Gel Remover when cleaning gel brushes and Alcohol for certain nail art techniques.

Item Code: UT/815



Puff with Silver Handle

Puffers are used apply HP gels to the nail, create stencil designs and help achieve the perfect Ombre.

Pack of 2 | Item Code: UT/924



Metal Pick

Remove gel or nail polish that has touched skin around the nail.

Item Code: UT/822



Prep Dish

Hold Gel Remover when cleaning brushes, solutions for nail art or mix Hp gels for nail art techniques.

Item Code: UT/823



SPA Spatula

A hygienic spatula used for the dispensing of Spa Products.

Item Code: UT/SPT



Metal Plate

Used as a creative plate to mix and decant high pigment gels.

Item Code: UT/934



EVO Gel Magnet

A magnet used to create a magnetic line effect for selected EVO Gels.

Item Code: UT/E/MAGNET/5D



Clips

BI-OLYGEL Clips are used to assist in shaping perfect c-curves when creating extreme length.

Pack of 10 | Item Code: UT/CLIP

SOFTS



Cotton Squares

Used for gel and polish removal and to remove the sticky residue once gel is cured.

Pack of 200 | Item Code: SFT/901



Wonderwipes

Cotton roll used for gel and polish removal or to remove the sticky residue once gel is cured.

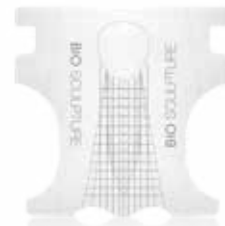
Pack of 6 | Item Code: SFT/902



Silk Strip

Used to create silk sculptures and repair breaks in nails.

Item Code: SFT/904



Advanced Nail Forms

Effective alignment with nail side wall
May be shaped, cut and moulded to fit any nail type.
Adhesive, creating a strong connection when building sculptures.

Pack of 152 | Item Code: SFT/905/A



Cotton Wipes

Cotton nail wipes used during Gel and Nail Polish application.

Pack of 200 | Item Code: SFT/906



Nail Wipes

Lint free nail wipes used during Gel and Nail Polish application.

Pack of 360 | Item Code: SFT/903



Latex Gloves

Disposable latex gloves.

Pack of 100 | Item Code: SFT/908



Bio Gloves

Fingerless gloves used to protect and keep clients hands warm during Gel Removal as well as Overlays.

Pack of 2 | Item Code: SFT/907



Tootseez

Tootseez are used to separate toes during pedicures.

Pack of 2 | Item Code: SFT/912



Soakies

Soakies are used to assist in gel removal to hold Nail Foils and EVO Remover Sachets in place.

Pack of 10 | Item Code: SFT/920



Disposable Apron

Disposable plastic apron.

Pack of 100 | Item Code: SFT/913



Nail Foils

Pre-cut foil squares used during the removal process.

Pack of 400 | Item Code: SFT/919



Pumice Stone

Abrasive stone used to remove dry skin.

Pack of 1 | Item Code: UT/821

BUFFS & FILES



Turquoise Shiner

Ultra-fine turquoise buff used to buff and shine natural nails. 400/3000 grit.

Item Code: BF/1001/S



Blue Teardrop

Fine blue file used to shape the free edge of natural nails. 200/240 grit.

Item Code: BF/1003/S



Sponge Board

Orange and Purple sponge board used to refine and shape gel layers. 100/180 grit.

Item Code: BF/1006



Grey Square

Fine grey sponge buff board used to refine natural nails. 220/220 grit.

Item Code: BF/1004/S



Orange Spear

Coarse grit orange sponge spear used to refine and shape gel layers. 100/100 grit.

Item Code: BF/1007/S



Purple Buff

BI-OLYGEL 80 Grit Purple Buff is used to swiftly shape and buff BI-OLYGEL. 80 grit.

Item Code: BF/1020/S



Gold File

A coarse grit file used to file top layers of gel or acrylic during product removal. 100/100 grit.

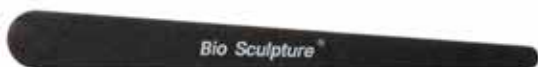
Item Code: BF/1009/1



Thin Black File

Small, mini thin black fine used to shape free edge of natural nails, assist in nail preparation and gel removal. 150/220 grit.

Pack of 6 | Item Code: BF/1008



Black Teardrop

Medium grit file used to shape the free edge of natural nails. 100/180 grit.

Item Code: BF/1005/G/S



Pink Teardrop

Fine pink file used to shape the free edge of natural nails. 280/320 grit.

Item Code: BF/1002/S



Multi-File Handle

Hygienic file handle used with disposable stick-on file or buff patches.

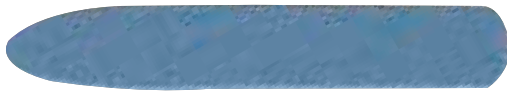
Pack of 2 | Item Code: BF/1010



White Patch

Pack of 20 | Item Code: BF/1021

BI-OLYGEL White Patch is used on a Multi-file Handle to hygienically assist with a quicker and more efficient removal process. (80 grit)



Blue Patch

Pack of 20 | Item Code: BF/1013

Coarse grit blue file patch used on a Multi-file Handle to file top layers of gel or acrylic during product removal. (100 grit)



Black Patch

Pack of 20 | Item Code: BF/1011

Fine black file patch used on a Multi-file Handle to shape the free edge of natural nails. (240 grit)



Grey Patch

Item Code: BF/1004/P/S

Fine grey sponge buff patch used on a Multi-file Handle to refine natural nails. (220 grit)



Orange Patch

Item Code: BF/1007/P/S

Coarse grit orange sponge patch used on a Multi-file Handle to refine and shape gel layers. (100 grit)



Purple Patch

Item Code: BF/1020/P

BI-OLYGEL 80 Grit Purple patch is used to swiftly shape & buff BI-OLYGEL. (80 grit)



Large Pedi-Paddle

Hygienic file handle used with disposable stick-on Pedi-Paddle Refills to remove dry and dead skin from the bottom of feet.

Item Code: BF/1015



Large Pedi-Paddle Refills

Large Pedi-Paddle stick-on refills.

Pack of 20 | Item Code: BF/1015/R

BRUSHES



No. 4 Flat Brush

Flat bristle brush used to apply BIOGEL and create nail art designs.

Item Code: BR/111/4F



No. 4 Round Brush

Round bristle brush used to apply BIOGEL and create nail art designs.

Item Code: BR/111/4R



No. 4 Smiley Brush

Round bristle brush used to create nail art designs and the perfect french smile line.

Item Code: BR/111/4S



No. 4 French Brush

Slanted bristle brush used to create nail art designs and the perfect French smile line.

Item Code: BR/111/WF



No. 4 French Brush Crystal

Slanted bristle brush used to create nail art designs and the perfect French smile line.

Item Code: BR/111/WFC



No. 6 Flat Brush

Flat bristle brush used to apply BIOGEL and create nail art designs.

Item Code: BR/112/6F



No. 6 Round Brush

Round bristle brush used to apply BIOGEL and create nail art designs.

Item Code: BR/112/6R



No. 6 Flat Retractable Brush

Flat bristle brush used to apply BIOGEL and create nail art designs.

Item Code: BR/113/6R



Fine Art Brush

High quality fine brush tip allows the technician to achieve the finest detailing and line work. Ideal for hand painting small and intricate designs.

Item Code: BR/114/FN



Nail Art Brush

Short small bristle brush used to create nail art designs.

Item Code: BR/114/1N



Upper Arch Brush

Long, thin brush tip used to build an upper arch and create fine detail nail art.

Item Code: BR/115/UA



BI-OLYGEL Handle Brush (2in1)

Specially shaped bristles to assist in contouring BI-OLYGEL when used in conjunction with Slide Solution.

Item Code: BR/120/BHB



Dusting Brush

Soft bristle brush used to remove dust from clients hands and surfaces.

Item Code: BR/117



EVO French Brush (In Bottle)

Slanted brush tip in an EVO bottle used to create a perfect French smile line.

Item Code: BR/E/FRENCH



EVO Nail Art Brush (In Bottle)

Long, thin brush tip in an EVO bottle used to build an upper arch and create fine detail nail art.

Item Code: BR/E/NAILART



Mask Brush Silver

A soft bristle brush used to apply Mint Mask during manicures or pedicures.

Item Code: BR/118/S



Massage Brush

A round brush with firm bristles used to assist in massaging during manicures and pedicures.

Item Code: BR/119



Nail Brush

A Nail brush used remove dust off nails during preparation and overlays as well as clean under nails after gel removal.

Item Code: BR/116

LAMPS



SPECTRA LED Unit

- 30 second and 60 second curing
- Automatic sensor
- Self-activation 30 second or 60 second button
- 20 LED's
- Removable magnetic base plate
- Replaceable silicone pad protector, assisting clients with hand positioning
- Effective side wall and free edge curing
- On /off reset button

Item Code: CUR/SPECTRA/SA



V3 LED Unit

- 30 second curing
- Automatic sensor
- Self-activation button
- Light weight
- 16 LED's
- Removable magnetic base plate
- Replaceable silicone base pad protector
- Good side wall and free edge curing

Item Code: CUR/V3/EU



EVO LED Unit

- 30 second curing
- USB powered
- Light weight
- Compact

Item Code: CUR/EVO/EU



Professional LED Desk Lamp

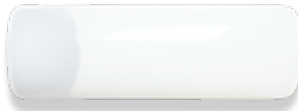
Black Item Code: STAND/DL/B
Silver Item Code: STAND/DL/S

TIPS & ADHESIVES



Refill Pack No. 9 Regular

50 Pack | Item Code: TA/125/R9



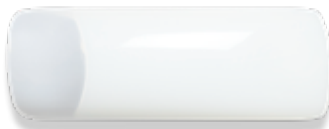
Refill Pack No. 8 Regular

50 Pack | Item Code: TA/125/R8



Refill Pack No. 7 Regular

50 Pack | Item Code: TA/125/R7



Refill Pack No. 6 Regular

50 Pack | Item Code: TA/125/R6



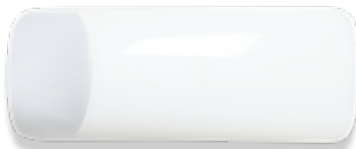
Refill Pack No. 5 Regular

50 Pack | Item Code: TA/125/R5



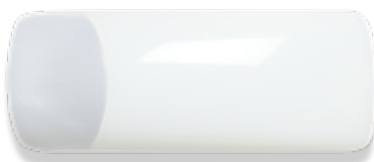
Refill Pack No. 4 Regular

50 Pack | Item Code: TA/125/R4



Refill Pack No. 3 Regular

50 Pack | Item Code: TA/125/R3



Refill Pack No. 2 Regular

50 Pack | Item Code: TA/125/R2



Refill Pack No. 1 Regular

50 Pack | Item Code: TA/125/R1



Refill Pack No. 0 Regular

50 Pack | Item Code: TA/125/R0



Nail Resin

10ml | Item Code: TA/122/BO



Box with 250 Regular Tips

Item Code: TA/123/BXR



Sculpture Moulds

100pcs - 10 Sizes
Item Code: TA/120/BRT

RETAIL STANDS



**Bio/Evo Wall Unit
Combined**

Item Code: STAND/WUC



Bio Gel Tray

Item Code: STAND/DESK



Small Gel Tray

Item Code: STAND/ATS



**Retail Display
Stand**

Item Code: STAND/RDS



Desk Organiser

Item Code: STAND/DO



EVO Wall Unit

Item Code: PRO/E/DISP



**Perspex Sneeze
Guard**

Item Code: STAND/PSG

PROMOTIONAL MATERIAL



EVO Brochure

Item Code: PRO/E/BROCHURE



Spa Brochure

Item Code: PRO/1631



Brand Brochure

Item Code: PRO/1601/BR



BIOGEL Brochure

Item Code: PRO/1601/BIO



Gift Voucher

Item Code: PRO/1608



Bio Lapel Pin

Item Code: PRO/1611



Technician Badge

Item Code: PRO/1614



Client Card

Item Code: PRO/1609

BIO SCULPTURE

Decal Bio Sculpture

400 x 42mm | Item Code: PRO/1621

400 x 42mm Reversed | Item Code: PRO/1621/R



BIO SCULPTURE

Small Logo Sticker

100 x 11mm | Item Code: PRO/1622

100 x 11mm Reversed | Item Code: PRO/1622/R

Photo Sheet

A4 | Item Code: PRO/PHOTOPAD



Thank you Card

Item Code: PRO/1603



A3 Poster

Item Code: PRO/1627



BIOGEL & EVO Colour Booklet

Item Code: PRO/1605

BAGS



Accessory Bag

Item Code: BAG/411



Carry Bag

Item Code: BAG/409



Home Care Bag

Item Code: BAG/408



Retail Paper Bag

Large | Item Code: BAG/410/LP
Small Gift Bag | Item Code: BAG/410/GP



Pedicure Bag

Item Code: BAG/Q040606



Paper Packet Small

Item Code: BAG/410/SP

BIO SCULPTURE