



## WOODOC WOOD REVIVER

A powerful wood cleaner that renovates even the worst weathered wood



### TYPICAL APPLICATION:

A powerful wood cleaner that revives weathered and bleached wood. Can be used on all types of wood. Ideal for cleaning greying due to sun exposure, greening due to algae growth or blackened from fungal growth. Can be used to restore cladding, decks, fences, and other exterior wood. After treating with Wood Reviver the wood is restored to a clean state so it can be enjoyed in a natural state or protected with an appropriate Woodoc exterior product. **Note:** This product is not a paint stripper! Depending on the initial conditions of the wood some sanding might be required.

### PRODUCT FEATURES:

Packaging contains all the equipment needed for application: Wood Reviver crystals pre-metered and ready for mixing; wooden mixing spatula; protective gloves; application brush.

- Easily mixed using warm tap water.
- The mixed solution has indefinite life in a sealed container.
- Complete how-to-use instructions on label (see below also).

### APPLICATION INSTRUCTIONS

#### Important Information

Read the label instructions carefully Wood Reviver is an acid-based product and must be used with care.

Do not use on surfaces that are sensitive to acid. In particular, do NOT allow it to come into contact

with Limestone, Travertine, Marble and Metal surfaces. Protect any metal as per instructions.

#### Direction for Use

- Remove all metal or brass fittings, or protect by coating with petroleum jelly, clean grease or wax.
- Remove all previous coatings, ensuring that the Wood Reviver solution can reach the wood fibres.
- Use the protective latex gloves provided (or nitrile gloves if you prefer/need to)
- Fill the container with warm tap water and dissolve the crystals
- Use the wooden spatula to stir - DO NOT use any metal and avoid contact with hands or skin.
- Work the solution into the wood with the scrubbing brush. Treat all the wood to ensure an even appearance.
- Wash down with plenty of water.
- Repeat process if necessary.
- Allow the wood to dry thoroughly (2-3 weeks)<sup>11</sup>. Sand wood and seal with a suitable exterior Woodoc Sealer.
- Wood Reviver Solution may be stored and re-used. Replace lid firmly after use to prevent evaporation.

<sup>11</sup> Moisture in the wood prevents sealer penetration and binding. Technically the wood needs to be below 20% moisture content. The rate of drying depends on heat, air-flow, type of wood, humidity and sunshine. Drying may be considerably shorter for softwood left in the sun on a hot day.



## Safety Information

- Keep away from children.
- Keep away from pets.
- Use only as per instructions.
- Contains Oxalic acid.
- Corrosive to skin and eyes.
- Avoid contact with skin. Wear gloves when handling crystals and solution. Wash contaminated skin with plenty of water.
- Consult a doctor immediately. If ingested, give water to drink. Do not induce vomiting.
- Store away from oxidizing agents and foodstuffs.

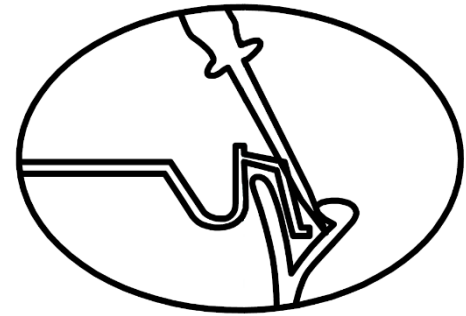
## APPLICATION TIPS:

1. Make sure to use hand-hot (not scolding hot) water as Wood Reviver works up to 10 times faster when hot water is used.
2. If using a 5 Lite size consider using half at a time.
3. After brushing on the Wood Reviver, leave it for 15 minutes before rinsing off, if the wood still looks weathered. The Wood Reviver will continue to work during this period and saves from excessive brushing.
4. Once the wood is clean and dry give it a light sanding with fine (180 Grit) sandpaper or fine steel wool to smooth the surface of the wood..
5. Once clean, dry and smooth the item can be enjoyed as is or the wood can be protected with one of our Woodoc Exterior Sealers such as Wood dressing, W30, W50/W50MAT or Water-borne Marine.

## TIPS FOR OPENING WOODOC DUO SEAL PLASTIC TUB:

Woodoc Wood Reviver comes in a plastic tub with a double seal closure (DUO SEAL).

This gives a very good seal for storing and great integrity during transportation. The Duo Seal can be a bit tricky to open, but with the correct technique it is quite straight forward.



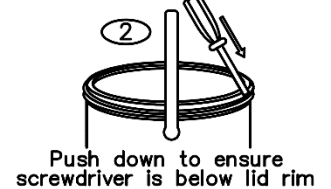
### Step 1

Insert a flat-headed screwdriver or paint tin opener between the tub body and lid.



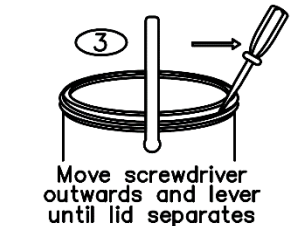
### Step 2

Push down to ensure screwdriver is below lid rim.



### Step 3

Move the screwdriver outwards and lever until lid separates.



### Step 4

Repeat steps 1 to 3 around the rim until the lid is free.



Watch a video on how to use Woodoc Wood Reviver



[https://www.youtube.com/watch?time\\_continue=1&v=YTpf2d3XVeE&feature=emb\\_logo](https://www.youtube.com/watch?time_continue=1&v=YTpf2d3XVeE&feature=emb_logo)